

UNITED STATES
DEPARTMENT OF THE INTERIOR
GEOLOGICAL SURVEY

30-045-22145

APPLICATION FOR PERMIT TO DRILL, DEEPEN, OR PLUG BACK

1. TYPE OF WORK

DRILL ☒DEEPEN ☐PLUG BACK ☐

2. TYPE OF WELL

OIL
WELL ☐GAS
WELL ☒

OTHER

SINGLE
ZONE ☐MULTIPLE
ZONE ☐

3. NAME OF OPERATOR

Tenneco Oil Company

4. ADDRESS OF OPERATOR

1360 Lincoln St., Suite 1200, Denver, Colorado 80203

5. LOCATION OF WELL (Report location clearly and in accordance with any State requirements.)

At surface

1490' FSL and 1080' FEL, Unit I

At proposed prod. zone

6. DISTANCE IN MILES AND DIRECTION FROM NEAREST TOWN OR POST OFFICE

22 miles East of Bloomfield, N. M. on Highway 511. Turn right on Gubernador Canyon road. Proceed up South side of wash to site.

7. DISTANCE FROM PROPOSED

LOCATION TO NEAREST
PROPERTY OR LEASE LINE, FT.
(Also to nearest drg. unit line, if any)

16. NO. OF ACRES IN LEASE

320

17. NO. OF ACRES ASSIGNED
TO THIS WELL

E/ 320

18. DISTANCE FROM PROPOSED LOCATION
TO NEAREST WELL, DRILLING, COMPLETED,
OR APPLIED FOR, ON THIS LEASE, FT.

19. PROPOSED DEPTH

± 5050'

20. ROTARY OR CABLE TOOLS

Rotary

21. ELEVATIONS (Show whether DF, RT, GR, etc.)

5870'

22. APPROX. DATE WORK WILL START

September 1976

23. PROPOSED CASING AND CEMENTING PROGRAM

SIZE OF HOLE	SIZE OF CASING	WEIGHT PER FOOT	SETTING DEPTH	QUANTITY OF CEMENT
12 1/4"	9 5/8"	36#	± 200'	Suff. to circulate to surface.
8 3/4"	7"	23#	± 2900'	Suff. to cement back to surface.
6 1/8"	4 1/2"	10.5#	± 2700-5050'	Suff. to cement back to 7" csg.

Plan to drill well as follows:

1. MIRURT, drill 12 1/4" hole to ±200'.

2. Set and cement 9 5/8" casing to + 200' & cement with suff. cement to circ. to surface.

3. Drill out with 8 3/4" bit to +2900' feet.

4. Run 7" casing and cement back to surface casing.

5. Drill out of 7" using gas as the circulating fluid, do not drill more than 10' below the 7" casing shoe until the hole has dried up completely and is dusting.

6. Drill the hole to T.D., log the hole dry as requested by drillsite geologist.

7. Run 4 1/2" liner to T.D., load hole with mud and cement liner back to top of 4 1/2". Set liner hanger and POH w/drill pipe.

8. This well will be completed through casing perforations and stimulated as necessary to establish commercial production.

9. Clean up area.

10. Approximately 11 days will be required to drill this well

11. The gas is dedicated to Southern Union Gathering Co.

SEE PAGE 2

IN ABOVE SPACE DESCRIBE PROPOSED PROGRAM: If proposal is to deepen or plug back, give data on present productive zone and proposed new productive zone. If proposal is to drill or deepen directionally, give pertinent data on subsurface locations and measured and true vertical depths. Give blowout preventer program, if any.

24.

SIGNED

A. D. Myers

TITLE District Production Manager

DATE 7/30/76

(This space for Federal or State office use)

PERMIT NO.

APPROVED BY

CONDITIONS OF APPROVAL, IF ANY:

Okal

TITLE

AUG 9 1976
OIL COIN. CO.
DIST. 3

U. S. G.

*See Instructions On Reverse Side

**NEW MEXICO OIL CONSERVATION COMMISSION
WELL LOCATION AND ACERAGE DEDICATION PLAT**

All distances must be from the outer boundaries of the Section

Operator TENNECO OIL COMPANY			Lease FLORANCE		Well No. 40-A
Unit Letter I	Section 21	Township 30 NORTH	Range 8 WEST	County SAN JUAN	
Actual Footage Location of Well: 1490 feet from the SOUTH line and 1080 feet from the EAST line					
Ground Level Elev. 5870	Producing Formation Blanco Mesa Verde		Pool Blanco Mesa Verde	Dedicated Acreage: 2/320	Acres

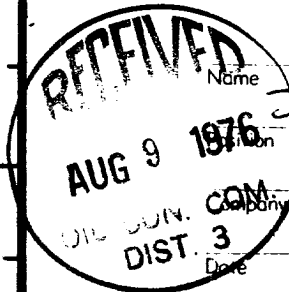
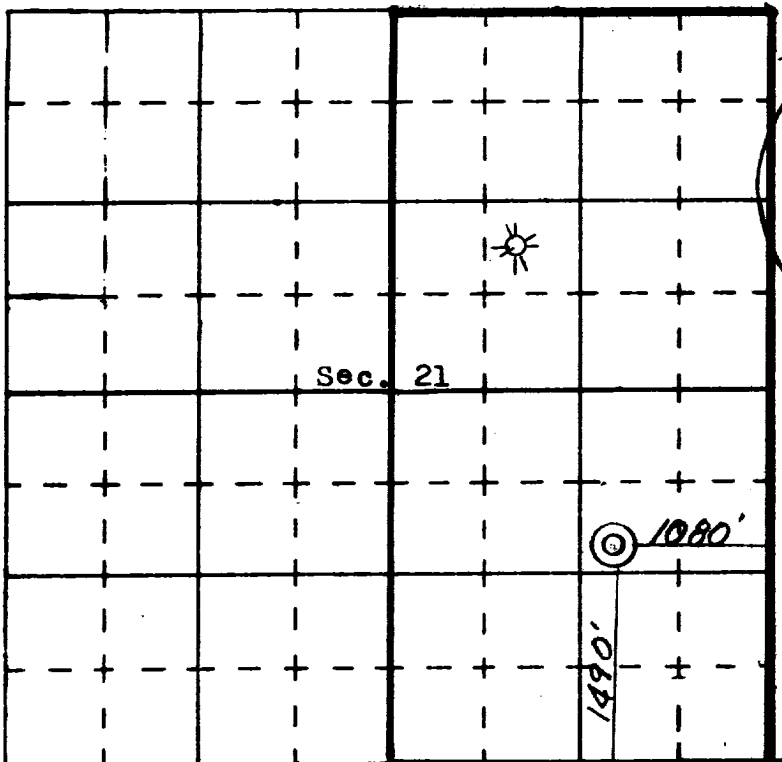
1. Outline the acreage dedicated to the subject well by colored pencil or hachure marks on the plat below.
2. If more than one lease is dedicated to the well, outline each and identify the ownership thereof (both as to working interest and royalty),
3. If more than one lease of different ownership is dedicated to the well, have the interests of all owners been consolidated by communitization, unitization, force-pooling, etc?
 () Yes () No If answer is "yes," type of consolidation

If answer is "no," list the owners and tract descriptions which have actually consolidated. (Use reverse side of this form if necessary.)

No allowable will be assigned to the well until all interests have been consolidated (by communitization, unitization, forced-pooling, or otherwise) or until a non standard unit, eliminating such interests, has been approved by the Commission.

CERTIFICATION

I hereby certify that the information contained herein is true and complete to the best of my knowledge and belief.



Name _____
 Title _____
 Date _____
 Company _____
 Tenneco Oil Co.

July 29, 1976

I hereby certify that this plat was plotted from the best of my knowledge and belief.

25 June, 1976
 Date Surveyed

Registered Professional Engineer
 and/or Land Surveyor
James P. Leese

1463

Certificate No.

