

GEOLOGICAL SURVEY

APPLICATION FOR PERMIT TO DRILL, DEEPEN, OR PLUG BACK

PROJECT DESIGNATION AND SERIAL NO.

SF-030000 30-045-22348

C. IF INDIAN, ALLOTTEE OR TRIBE NAME

1A. TYPE OF WORK

DRILL ☒DEEPEN ☐PLUG BACK ☐

B. TYPE OF WELL

OIL

☐

GAS

☒

OTHER

SINGLE

☐

MULTIPLE

☐

2. NAME OF OPERATOR

TE-NECO OIL COMPANY

3. ADDRESS OF OPERATOR

1860 Lincoln St., Suite 1200, Denver, Colorado 80295

4. LOCATION OF WELL (Report location clearly and in accordance with any State requirements.)*

At surface

At proposed prod. zone

1085 'FNL and 885' FWL
Unit D

7. UNIT AGREEMENT NAME

8. FARM OR LEASE NAME

Florance

9. WELL NO

#26A

10. FIELD AND POOL OR WILDCAT

Blanco Mesa Verde

11. SEC., T., R., M., OR BLK.
AND SURVEY OR AREA

Sec. 25, T29N, R9 W

12. COUNTY OR PARISH

San Juan

New Mexico

14. DISTANCE IN MILES AND DIRECTION FROM NEAREST TOWN OR POST OFFICE*

Turn Se off Hwy 17 on Canyon Largo Pipeline Rd. for 3 mi. Turn

E on Lease Rd for 1-3/4 mi. Turn left 1/4 mi. to site.

15. DISTANCE FROM PROPOSED

LOCATION TO NEAREST

PROPERTY OR LEASE LINE, FT.

(Also to nearest drlg. unit line, if any)

18. DISTANCE FROM PROPOSED LOCATION*

TO NEAREST WELL, DRILLING, COMPLETED,
OR APPLIED FOR, ON THIS LEASE, FT.

16. NO. OF ACRES IN LEASE

+320

19. PROPOSED DEPTH

+4942'

17. NO. OF ACRES ASSIGNED
TO THIS WELL

W/+320 299.24

20. ROTARY OR CABLE TOOLS

Rotary

22. APPROX. DATE WORK WILL START*

June 12, 1977

23. PROPOSED CASING AND CEMENTING PROGRAM

SIZE OF HOLE	SIZE OF CASING	WEIGHT PER FOOT	SETTING DEPTH	QUANTITY OF CEMENT
12-1/4"	9-5/8"	36#	+ 200'	Suff. to circulate to surface
8-3/4"	7"	23#	+ 2782'	Suff. to cement to surface csg.
6-1/8"	4-1/2"	10.5#	+ 2532' - 4942'	Suff. to cement to 7" csg.

1- The geologic name of this surface formation is ~~(San Jose)~~ Nacimiento

2&3 Formation Tops (Estimated)

Pictured Cliffs	+	2,482	'Possible oil or gas producer
Cliff House	+	4,152	'Possible oil or gas producer
Menefee	+	4,242	'Possible oil or gas producer
Point Lookout	+	4,742	'Possible oil or gas producer
Mancos Shale	+	4,822	'

4- Run 9-5/8" OD, K-55 new casing to +200' and circulate cement to surface. Run 7" OD, 23#, K-55 new casing to +2782' and circulate cement up through the 9-5/8" csg. Run a 4 1/2" csg. Liner from 200' above bottom of 7" csg. to T.D. and circulate cement back to the top of 4 1/2" csg. Casinghead will be a 10" 900 series w/a 3000 psi. rating.

5- Blowout preventors: Hydraulic, double ram, 10". One set of rams will be provided for each size drill pipe in the hole. One set of blind rams at all times. Fill line will be 2", kill line will be 2", choke relief line will be 2" with variable choke.

6- We will use; spud mud from 0-+200'; Gel Chemical w/low solids as needed to maintain good hole conditions from +200'-+2782'; Compressed gas from +2782' to T.D..

7- Auxiliary Equipment

- Kelly cock will be in use at all times.
- Stabbing valve to fit drill pipe will be present on floor at all times.
- Mud monitoring will be visual, no abnormal pressures are anticipated in this area.
- Rotating head will be used when drilling with gas.

8- An AOF test will be taken at the completion of this well. No cores will be taken. Gamma Ray and Compensated Density logs will be run. Any other evaluation that may be necessary during the drilling of this well will be conducted as needed.

9- No abnormal pressures or temperatures are anticipated. See point #5 for blowout prevention equipment.

10- The drilling of this well will take approximately eight days. The gas is contracted to Southern Union Gathering Co.

IN ABOVE SPACE DESCRIBE PROPOSED PROGRAM: If proposal is to deepen or plug back, give data on present productive zone and proposed new productive zone. If proposal is to drill or deepen directionally, give pertinent data on subsurface locations and measured and true vertical depths. Give blowout preventer program, if any.

24.

SIGNED

TITLE

Div. Production Manager

DATE

2-16-77

(This space for Federal or State office use)

PERMIT NO.

APPROVAL DATE

APPROVED BY

TITLE

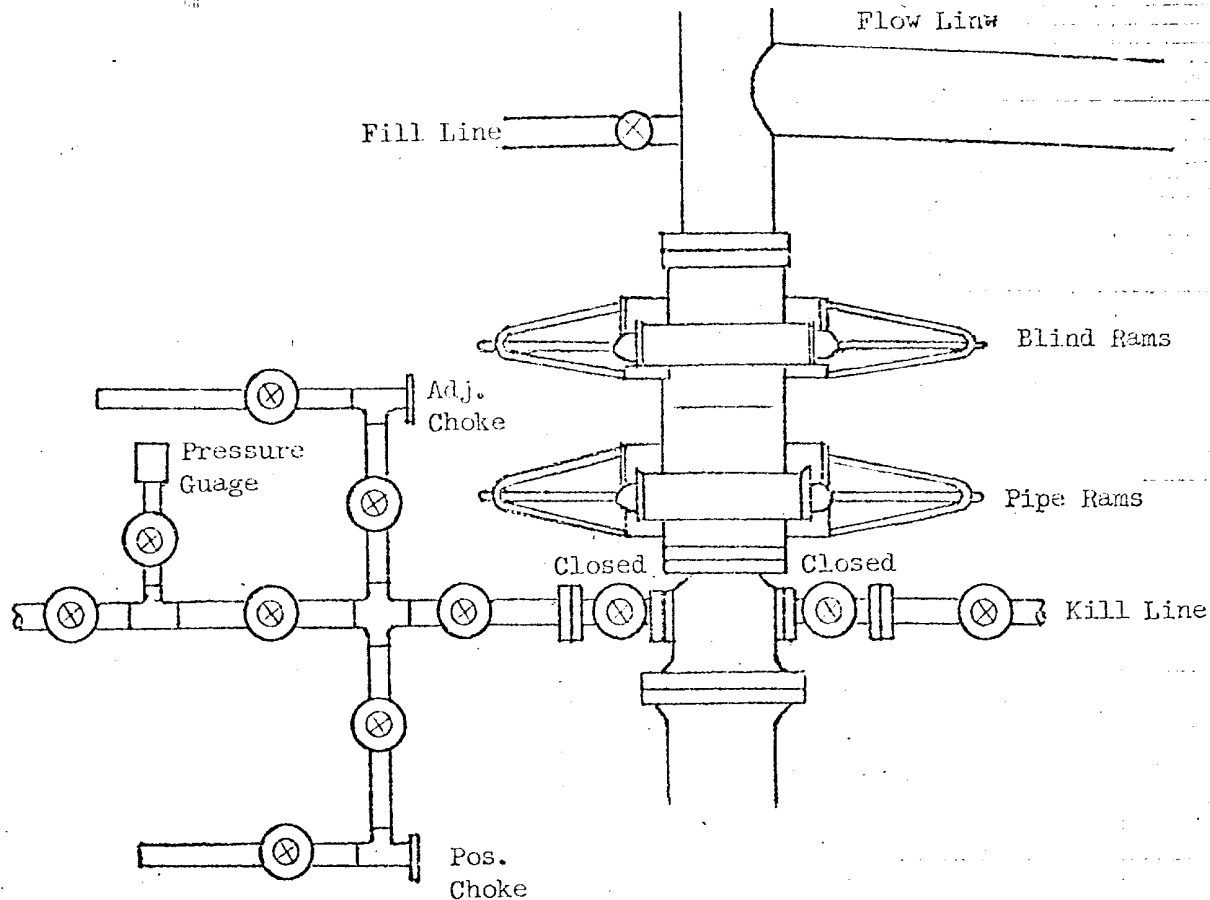
CONDITIONS OF APPROVAL, IF ANY:

RECEIVED

FEB 22 1977

U. S. GEOLOGICAL SURVEY
FARMINGTON, N. M.

*See Instructions On Reverse Side



All valves 2"

All BOPs, flanges, spools, valves, & lines must be series 900 or 3000 psi working press.

Choke manifold must be at ground level and extended out from under substructure.

TENNECO OIL COMPANY

REQUIRED MINIMUM BLOWOUT PREVENTOR

HOOKUP

Denver, Colorado

NEW MEXICO OIL CONSERVATION COMMISSION WELL LOCATION AND ACERAGE DEDICATION PLAT

All distances must be from the outer boundaries of the Section

Operator TENNECO OIL COMPANY			Lease FLORANCE		Well No. 26 - A
Unit Letter D	Section 25	Township 29 NORTH	Range 9 WEST.	County SAN JUAN	
Actual Footage Location of Well: 1085 feet from the NORTH line and 885 feet from the WEST line					
Ground Level Elev. 6029	Producing Formation Blanco Mesa Verde		Pool Blanco Mesa Verde	Dedicated Acreage 299.24 Acres W/320	

1. Outline the acreage dedicated to the subject well by colored pencil or hatchure marks on the plat below.
2. If more than one lease is dedicated to the well, outline each and identify the ownership thereof (both as to working interest and royalty),
3. If more than one lease of different ownership is dedicated to the well, have the interests of all owners been consolidated by communitization, unitization, force-pooling, etc?

(☒) Yes () No If answer is "yes," type of consolidation Communitization

If answer is "no," list the owners and tract descriptions which have actually consolidated. (Use reverse side of this form if necessary.)

No allowable will be assigned to the well until all interests have been consolidated (by communitization, unitization, forced-pooling, or otherwise) or until a non standard unit, eliminating such interests, has been approved by the Commission.

CERTIFICATION

I hereby certify that the information contained herein is true and complete to the best of my knowledge and belief.

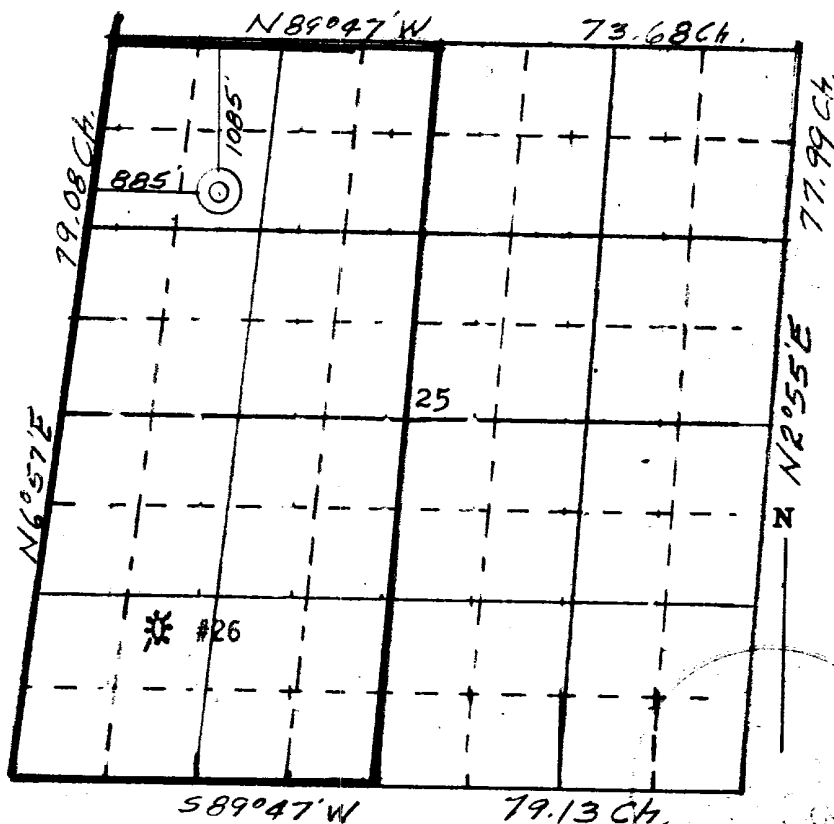
Name Paul J. Drury
 Position Production Analyst
 Company Tenneco Oil Company
 Date February 14, 1977

I hereby certify that the well location shown on this plat was plotted from field notes of actual surveys made by me or under my supervision, and that the same is true and correct to the best of my knowledge and belief.

Date Surveyed 5 February 1977
James P. Leese
 Registered Professional Engineer
 and/or Land Surveyor **James P. Leese**

1463

Certificate No.



OIL & GAS COM.
DIST. 3