

UNITED STATES  
DEPARTMENT OF THE INTERIOR  
GEOLOGICAL SURVEY

## APPLICATION FOR PERMIT TO DRILL, DEEPEN, OR PLUG BACK

## 1a. TYPE OF WORK

DRILL ☒DEEPEN ☐PLUG BACK ☐

## b. TYPE OF WELL

OIL  
WELL ☒GAS  
WELL ☐

OTHER

SINGLE  
ZONE ☐MULTIPLE  
ZONE ☐

## 2. NAME OF OPERATOR

Raymond T. Duncan

## 3. ADDRESS OF OPERATOR

Box 234, Farmington, NM 87401

## 4. LOCATION OF WELL (Report location clearly and in accordance with any State requirements.)\*

At surface

2450' FNL - 1880' FWL

At proposed prod. zone

## 14. DISTANCE IN MILES AND DIRECTION FROM NEAREST TOWN OR POST OFFICE\*

7 miles east of Shiprock, NM

## 15. DISTANCE FROM PROPOSED\*

LOCATION TO NEAREST  
PROPERTY OR LEASE LINE, FT. 1880'  
(Also to nearest drlg. unit line, if any)

## 16. NO. OF ACRES IN LEASE

640

17. NO. OF ACRES ASSIGNED  
TO THIS WELL

40

## 18. DISTANCE FROM PROPOSED LOCATION\*

TO NEAREST WELL, DRILLING, COMPLETED,  
OR APPLIED FOR, ON THIS LEASE, FT. 575'

## 19. PROPOSED DEPTH

680'

## 20. ROTARY OR CABLE TOOLS

Cable tools 0-25 Rotary 25-TD

## 21. ELEVATIONS (Show whether DF, RT, GR, etc.)

4968' GR

## 22. APPROX. DATE WORK WILL START\*

4-10-78 to 4-20-78

## 23.

## PROPOSED CASING AND CEMENTING PROGRAM

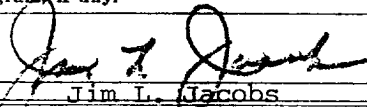
SIZE OF HOLE	SIZE OF CASING	WEIGHT PER FOOT	SETTING DEPTH	QUANTITY OF CEMENT
9"	7"	20#	25'	5/sx
6-1/4"	4-1/2"	10.5#	670'	75/sx

1. Drill surface hole thru boulders to approx. 25' with cable tools and run 7" csg cemented to surface with 5/sx cement.
2. Drill 6-1/4" hole to top of Dakota Formation @ approximately 670'.
3. Run 4-1/2" csg and cement to surface w/75 sx.
4. Drill 3-7/8" hole into Dakota Pay zone with air.
5. If commercial production is indicated 2-3/8" tbg will be run and the well completed naturally.

IN ABOVE SPACE DESCRIBE PROPOSED PROGRAM: If proposal is to deepen or plug back, give data on present productive zone and proposed new productive zone. If proposal is to drill or deepen directionally, give pertinent data on subsurface locations and measured and true vertical depths. Give blowout preventer program, if any.

## 24.

SIGNED

  
Jim L. Jacobs

TITLE

Agent

DATE

3-17-78

(This space for Federal or State office use)

PERMIT NO.

APPROVAL DATE

APPROVED BY

TITLE

DATE

CONDITIONS OF APPROVAL, IF ANY:



\*See Instructions On Reverse Side

NEW MEXICO OIL CONSERVATION COMMISSION  
WELL LOCATION AND ACREAGE DEDICATION PLAT

Form C-102  
Supersedes C-128  
Effective 1-1-65

All distances must be from the outer boundaries of the Section.

Operator Raymond T. Duncan			Lease North Hogback /			Well No. 25
Unit Letter	Section 1	Township 29N	Range 17W	County San Juan		

Actual Footage Location of Well:

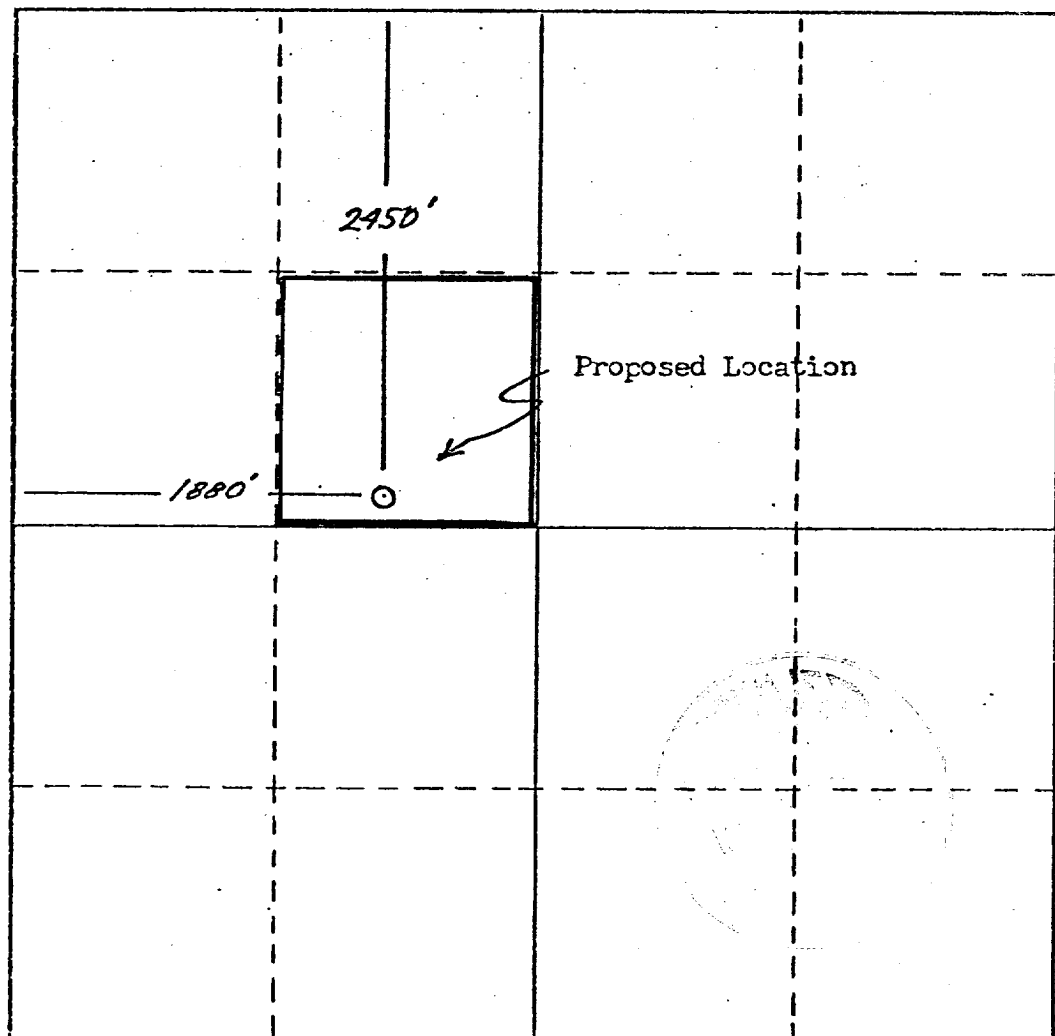
2450	feet from the	North	line and	1880	feet from the	West	line
Ground Level Elev. 4978	Producing Formation Dakota		Pool Slickrock Dakota		Dedicated Acreage: 40 Acres		

1. Outline the acreage dedicated to the subject well by colored pencil or hachure marks on the plat below.
2. If more than one lease is dedicated to the well, outline each and identify the ownership thereof (both as to working interest and royalty).
3. If more than one lease of different ownership is dedicated to the well, have the interests of all owners been consolidated by communitization, unitization, force-pooling, etc?

☐ Yes ☐ No If answer is "yes," type of consolidation \_\_\_\_\_

If answer is "no," list the owners and tract descriptions which have actually been consolidated. (Use reverse side of this form if necessary.) \_\_\_\_\_

No allowable will be assigned to the well until all interests have been consolidated (by communitization, unitization, forced-pooling, or otherwise) or until a non-standard unit, eliminating such interests, has been approved by the Commission.



CERTIFICATION

I hereby certify that the information contained herein is true and complete to the best of my knowledge and belief.

*Jim L. Jacobs*  
Name  
Jim L. Jacobs

Position  
Agent

Company  
Raymond T. Duncan

Date  
3-17-78

I hereby certify that the well location shown on this plat was plotted from field notes of actual surveys made by me or under my supervision, and that the same is true and correct to the best of my knowledge and belief.

February 2, 1978

Date Surveyed

Registered Professional Engineer  
and/or Land Surveyor

*Frederick H. Reed*  
Certificate No.  
3795

