

NO. OF COPIES RECEIVED	5
DISTRIBUTION	
SANTA FE	1
FILE	
U.S.G.S.	2
LAND OFFICE	
OPERATOR	1

NEW MEXICO OIL CONSERVATION COMMISSION

30-045-23115
Form C-101
Revised 1-1-65

5A. Indicate Type of Lease	
STATE <input type="checkbox"/>	FEE <input checked="" type="checkbox"/>
5. State Oil & Gas Lease No.	

APPLICATION FOR PERMIT TO DRILL, DEEPEN, OR PLUG BACK

1a. Type of Work		7. Unit Agreement Name	
b. Type of Well OIL WELL <input type="checkbox"/> GAS WELL <input checked="" type="checkbox"/> OTHER <input type="checkbox"/>		8. Farm or Lease Name Garrett "B"	
2. Name of Operator Getty Oil Company		9. Well No. 1	
3. Address of Operator P.O. Box 3360 Casper, WY 82602		10. Field and Pool, or Wildcat Bloomfield Chacra <i>et</i>	
4. Location of Well UNIT LETTER J LOCATED 1450' FEET FROM THE south LINE AND 1770 FEET FROM THE East LINE OF SEC. 12 TWP. 29N RGE. 11W NMPM		12. County San Juan	
19. Proposed Depth 3300'		19A. Formation Chacra	
20. Rotary or C.T. Rotary		21. E. Elevations (Show whether DF, RT, etc.) 5745' GR	
21A. Kind & Status Plug. Bond Blanket		21B. Drilling Contractor Brinkerhoff	
22. Approx. Date Work will start 6-29-78			

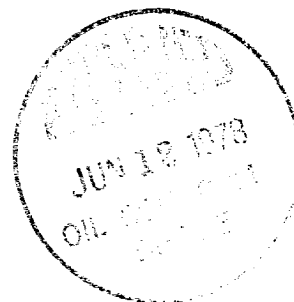
PROPOSED CASING AND CEMENT PROGRAM

SIZE OF HOLE	SIZE OF CASING	WEIGHT PER FOOT	SETTING DEPTH	SACKS OF CEMENT	EST. TOP
10-3/4"	3-5/8" OD	24#	300'	260	surface
6-1/4"	4-1/2" OD	9.5#	3300'	250	surface

We propose to drill to 3300' with mud to test the Chacra formation.

APPROVED
FOR STATE
DRILLING

EXPIRES 9-10-78



Gas not dedicated

IN ABOVE SPACE DESCRIBE PROPOSED PROGRAM: IF PROPOSAL IS TO DEEPEN OR PLUG BACK, GIVE DATA ON PRESENT PRODUCTIVE ZONE AND PROPOSED NEW PRODUCTIVE ZONE. GIVE BLOWOUT PREVENTER PROGRAM, IF ANY.

I hereby certify that the information above is true and complete to the best of my knowledge and belief.

Signed Charles E Mowry Title Area Engineer Date 6-7-78

(This space for State Use)

APPROVED BY AR Kendrick TITLE SUPERVISOR DATE JUN 12 1978

CONDITIONS OF APPROVAL, IF ANY:

NEW MEXICO OIL CONSERVATION COMMISSION
WELL LOCATION AND ACREAGE DEDICATION PLAT

Form C-102
Supersedes C-128
Effective 1-1-65

All distances must be from the outer boundaries of the Section.

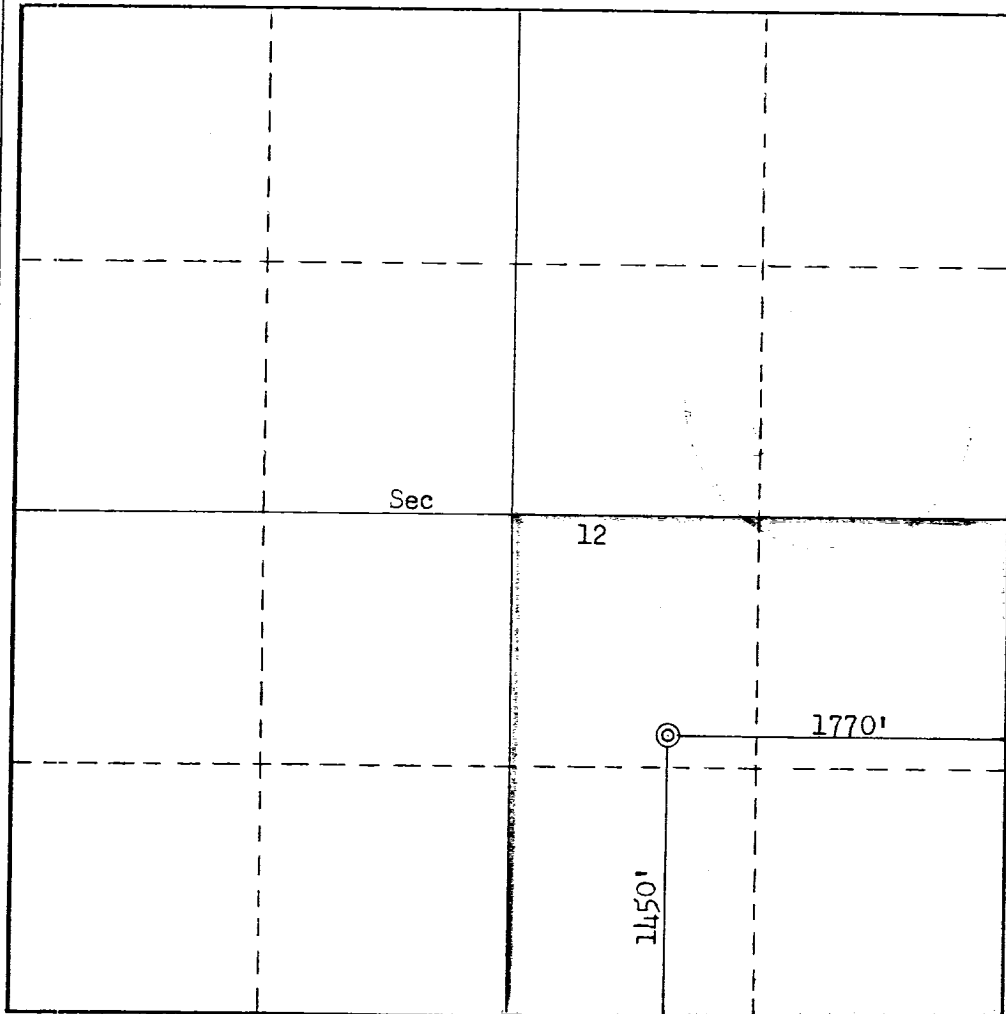
Operator GETTY OIL COMPANY			Lease GARRETT "B"		Well No. 1
Unit Letter J	Section 12	Township 29N	Range 11W	County San Juan	
Actual Footage Location of Well: 1450 feet from the South line and 1770 feet from the East line					
Ground Level Elev. 5728	Producing Formation Chacra	Pool Bloomfield ext		Dedicated Acreage: 160 Acres	

- Outline the acreage dedicated to the subject well by colored pencil or hachure marks on the plat below.
- If more than one lease is dedicated to the well, outline each and identify the ownership thereof (both as to working interest and royalty).
- If more than one lease of different ownership is dedicated to the well, have the interests of all owners been consolidated by communitization, unitization, force-pooling, etc?

☐ Yes ☐ No If answer is "yes," type of consolidation _____

If answer is "no," list the owners and tract descriptions which have actually been consolidated. (Use reverse side of this form if necessary.) _____

No allowable will be assigned to the well until all interests have been consolidated (by communitization, unitization, forced-pooling, or otherwise) or until a non-standard unit, eliminating such interests, has been approved by the Commission.



CERTIFICATION

I hereby certify that the information contained herein is true and complete to the best of my knowledge and belief.

Charles E Mowry
Name

Charles Mowry

Position

Area Engineer

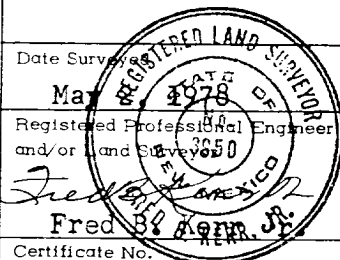
Company

Getty Oil

Date

6-7-78

I hereby certify that the well location shown on this plat was plotted from field notes of actual surveys made by me or under my supervision, and that the same is true and correct to the best of my knowledge and belief.



Certificate No.
3950

SUPPLEMENT TO A.P.D. FOR
GARRETT "B" #1

The BOP stack will consist of a pipe ram, blind ram and a rotating head. The BOP stack will be nipped up and pressure tested to 1000 psi, after cementing of the surface casing has been completed. Drilling will resume when it has been determined that the BOP stack will contain the test pressure. Additional testing of the BOP stack will consist of a daily mechanical check of the pipe rams, and mechanical checks of the blind rams whenever the drillpipe is out of the hole.

BOP schematic on following page.



BLOWOUT PREVENTER SCHEMATIC
GARRETT "B" #1

