

UNITED STATES
DEPARTMENT OF THE INTERIOR
GEOLOGICAL SURVEY

APPLICATION FOR PERMIT TO DRILL, DEEPEN, OR PLUG BACK

1a. TYPE OF WORK

DRILL ☒DEEPEN ☐PLUG BACK ☐

b. TYPE OF WELL

OIL
WELL ☐GAS
WELL ☒

OTHER

SINGLE
ZONE ☒MULTIPLE
ZONE ☐

2. NAME OF OPERATOR

Supron Energy Corporation

3. ADDRESS OF OPERATOR

P.O. Box 808, Farmington, New Mexico 87401

4. LOCATION OF WELL (Report location clearly and in accordance with any State requirements.)*

At surface

1470 Feet/North; 850 feet/West

At proposed prod. zone

Same as above

14. DISTANCE IN MILES AND DIRECTION FROM NEAREST TOWN OR POST OFFICE*

2 Miles West of Blanco, New Mexico

15. DISTANCE FROM PROPOSED*

LOCATION TO NEAREST
PROPERTY OR LEASE LINE, FT.
(Also to nearest drg. unit line, if any)

850

16. NO. OF ACRES IN LEASE

598.6

17. NO. OF ACRES ASSIGNED
TO THIS WELL

160

18. DISTANCE FROM PROPOSED LOCATION*

TO NEAREST WELL, DRILLING, COMPLETED,
OR APPLIED FOR, ON THIS LEASE, FT.

482

19. PROPOSED DEPTH

3300

20. ROTARY OR CABLE TOOLS

0 - 3300

21. ELEVATIONS (Show whether DF, RT, GR, etc.)

5777 GR

22. APPROX. DATE WORK WILL START*

8/1/79

23.

PROPOSED CASING AND CEMENTING PROGRAM

SIZE OF HOLE	SIZE OF CASING	WEIGHT PER FOOT	SETTING DEPTH	QUANTITY OF CEMENT
12-1/4"	8-5/8"	24#	150	100 Sx.
7-7/8"	5-1/2"	15.50#	3300	250 Sx.

We propose to drill this well with mud through the Chacra zone. 5-1/2" casing will be run to 3300 feet and used as production casing. The well will be perforated in the Chacra & Pictured Cliffs zones and sand - water fractured. A packer will be set above the Chacra zone and each zone will be produced through a string of tubing.

gas is dehydrated

IN ABOVE SPACE DESCRIBE PROPOSED PROGRAM: If proposal is to deepen or plug back, give data on present productive zone and proposed new productive zone. If proposal is to drill or deepen directionally, give pertinent data on subsurface location and measured and true vertical depths. Give blowout preventer program, if any.

24.

SIGNED

Kenneth E. Roddy

TITLE

Production Superintendent

DATE

May 22, 1979

(This space for Federal or State office use)

PERMIT NO.

APPROVAL DATE

APPROVED BY

TITLE

DATE

CONDITIONS OF APPROVAL, IF ANY:

ok Frank

N.M.P.C.

**NEW MEXICO OIL CONSERVATION COMMISSION
WELL LOCATION AND ACREAGE DEDICATION PLAT**

Form C-102
Supersedes C-128
Effective 1-1-65

All distances must be from the outer boundaries of the Section.

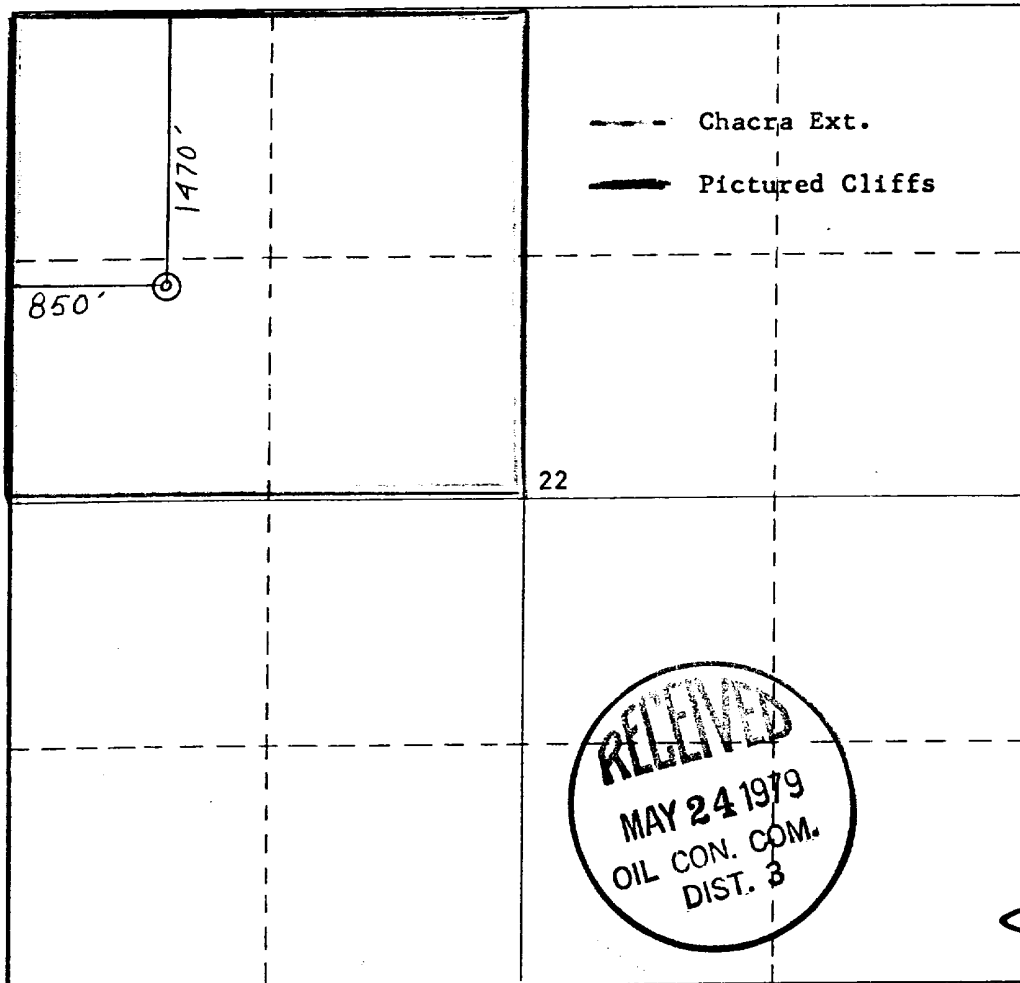
Operator SUPRON ENERGY CORPORATION			Lease ALBRIGHT		Well No. 2 J 2-A
Unit Letter E	Section 22	Township 29 NORTH	Range 10 WEST	County SAN JUAN	
Actual Footage Location of Well: 1470 feet from the NORTH line and 850 feet from the WEST line					
Ground Level Elev. 5777	Producing Formation Charca Ext. Pictured Cliffs		Pool Bloomfield Aztec	Dedicated Acreage: NW 1/4 160 Acres	

1. Outline the acreage dedicated to the subject well by colored pencil or hachure marks on the plat below.
2. If more than one lease is dedicated to the well, outline each and identify the ownership thereof (both as to working interest and royalty).
3. If more than one lease of different ownership is dedicated to the well, have the interests of all owners been consolidated by communitization, unitization, force-pooling, etc?

☐ Yes ☐ No If answer is "yes," type of consolidation _____

If answer is "no," list the owners and tract descriptions which have actually been consolidated. (Use reverse side of this form if necessary.) _____

No allowable will be assigned to the well until all interests have been consolidated (by communitization, unitization, forced-pooling, or otherwise) or until a non-standard unit, eliminating such interests, has been approved by the Commission.



CERTIFICATION

I hereby certify that the information contained herein is true and complete to the best of my knowledge and belief.

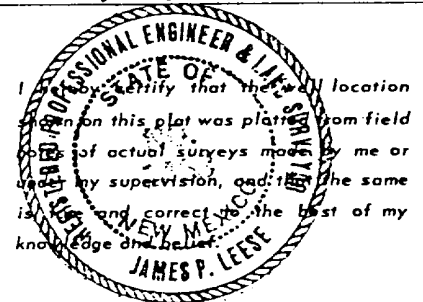
Kenneth E. Roddy

Name
Kenneth E. Roddy

Position
Production Superintendent

Company
SUPRON ENERGY CORPORATION

Date
May 22, 1979



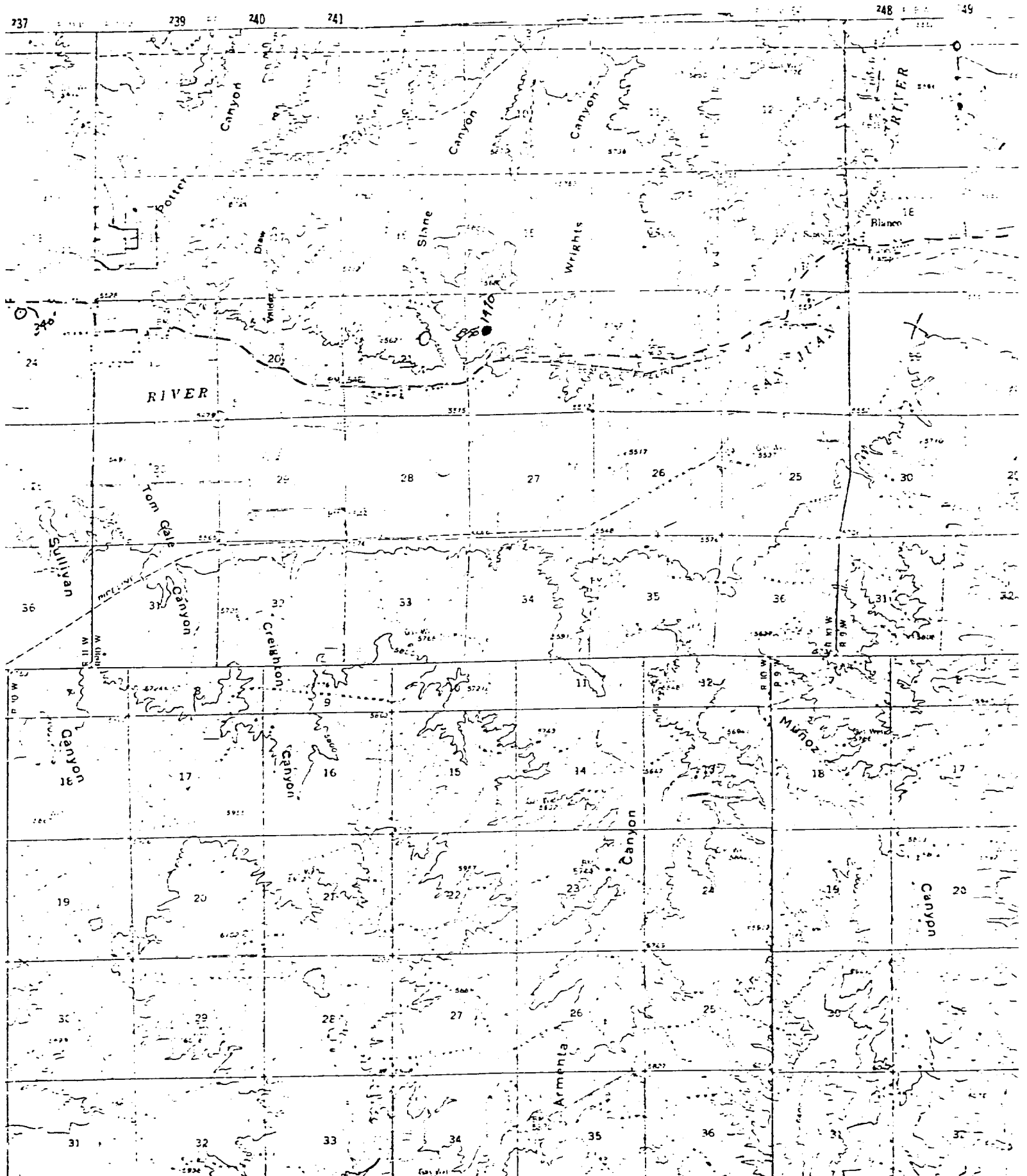
Date Surveyed
12 April 1979

Registered Professional Engineer and/or Land Surveyor
James P. Leese

Certificate No.
1463



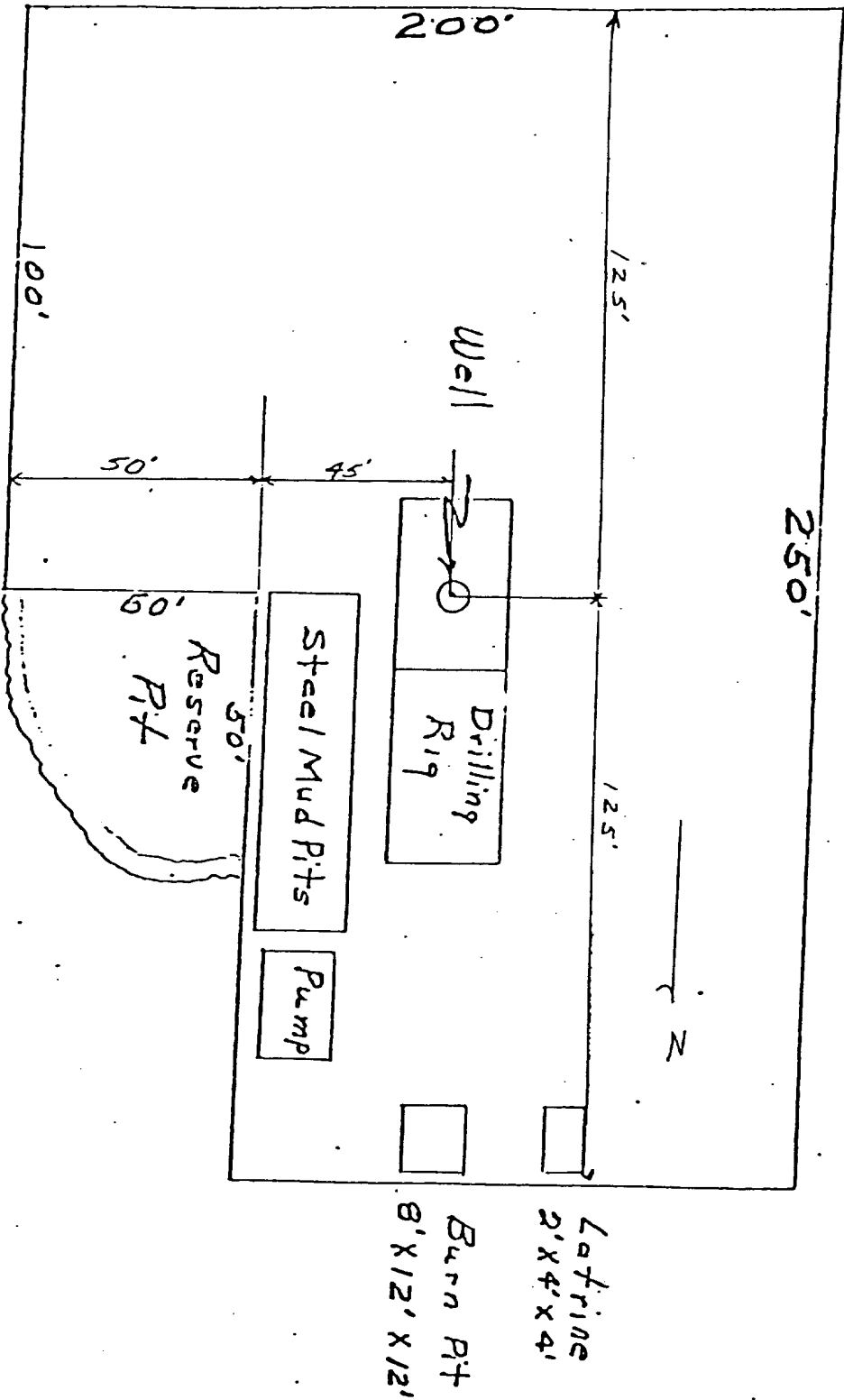
SUPRON ENERGY CORPORATION
ALBRIGHT # 2-A
SE $\frac{1}{4}$ NE $\frac{1}{4}$ Sec. 22, T29N, R10W
San Juan County, New Mexico



SUPRON ENERGY CORPORATION
LOCATION AND EQUIPMENT LAYOUT

ALBRIGHT NO. 2-A

1470 Feet from the North line and 850 feet from the West line of
Section 22, Township 29 North, Range 10 West, N.M.P.M., San Juan
County, New Mexico.



SUPRON ENERGY CORPORATION

ALBRIGHT NO. 2-A

Unit E, Sec. 22, T-29N, R-10W
San Juan County, New Mexico

SUPPLEMENT TO FORM 9-331C

1. The Geologic name of the surface formation is "Wasatch".
2. The estimated tops of important Geologic markers are:
 - A. Base of Ojo Alamo - - - - - 1510
 - B. Top of Pictured Cliffs - - - - - 2110
 - C. Top of Chacra - - - - - 2775
3. The estimated depth at which anticipated water, oil, or other mineral - bearing formations are expected to be encountered are:
 - A. Base of Ojo Alamo - - - - - 1510 - - - Water
 - B. Top of Pictured Cliffs - - - - - 2110 - - - Gas
 - C. Top of Chacra - - - - - 2775 - - - Gas
4. The casing program is shown on form 9-331C and all casing is new.
5. The lessee's pressure - control equipment schematics are attached, along with minimum specifications, testing procedures, and frequencies.
6. The type, estimated volumes, and characteristics of the circulating media are as follows:
 - A. 0 - 150 Natural Mud
 - B. 150 - 3300 Permaloid non-dispersed mud w/167 sx gel, 67 sx permaloid, 10 sx C.M.C.
7. The auxiliary equipment to be used will be floats at the bit and a sub on the floor with a full - opening valve to be stabbed into the drill pipe when the kelly is not in the string.
8. This well is in an area which is partially developed; therefore we will not have a testing and coring program. The logging program will be as follows:
 - A. E.S. Induction
 - B. Gamma Ray Density
 - C. Gamma Ray Correlation
 - D. Cement Bond Log
9. We do not expect to find any abnormal pressures, temperatures or hydrogen sulphide problems in this partially - developed area.
10. The anticipated starting date for this well is 8/1/79.

SUPRON ENERGY CORPORATION

POST OFFICE Box 808

FARMINGTON, NEW MEXICO 87401

I hereby certify that I, or persons under my direct supervision, have inspected the proposed drillsite and access route; that I am familiar with the conditions which presently exist; that the statements made in this plan are, to the best of my knowledge, true and correct; and, that the work associated with the operations proposed herein will be performed by SUPRON ENERGY CORPORATION and its contractors subcontractors in conformity with this plan and the terms and conditions under which it is approved.

SUPRON ENERGY CORPORATION

A handwritten signature in cursive script, reading "Rudy D. Motto".

Rudy D. Motto
Area Superintendent
Phone: 325-3587

SUPRON ENERGY CORPORATION

POST OFFICE BOX 808

FARMINGTON, NEW MEXICO 87401

May 22, 1979

United States Geological Survey
P.O. Box 959
Farmington, New Mexico 87401

Attention: Mr. Phil McGrath

Dear Sir:

Supron Energy Corporation proposes to drill the Albright No. 2-A well located 1470 feet from the North line and 850 feet from the West line, Section 22, Township 29 North, Range 10 West, N.M.P.M., San Juan County, New Mexico.

The following attachments are included with this application:

1. Map of existing roads.
2. No access road needed.
3. Location of existing wells.
4. Lateral roads to well locations.
5. Location of surface equipment if required.
6. Drilling and completion water will be obtained from the San Juan River.
7. Waste will be disposed of by being placed in the reserve pit and buried upon completion of the well.
8. There will be no camp at or near the well site.
9. There will be no air strip.
10. A plat is attached showing the location of the rig, mud tanks, reserve pit, burn pit and etc.
11. A letter of certification is attached. The operator representative, for compliance purposes, is Rudy D. Motto, Area Superintendent, P.O. Box 808, Farmington, New Mexico 87401. Phone (505) 325-3587.
12. After the well is completed the location will be cleaned up and bladed. The reserve pit will be allowed to dry then it will be filled and restored to its natural state.
13. The soil is sandy loam with the principal vegetation being sage brush.

UNITED STATES
DEPARTMENT OF THE INTERIOR
GEOLOGICAL SURVEY

SUNDRY NOTICES AND REPORTS ON WELLS

(Do not use this form for proposals to drill or to deepen or plug back to a different reservoir. Use Form 9-331-C for such proposals.)

1. oil well ☐ gas well ☒ other

2. NAME OF OPERATOR
SUPRON ENERGY CORPORATION

3. ADDRESS OF OPERATOR
P.O. Box 808, Farmington, New Mexico 87401

4. LOCATION OF WELL (REPORT LOCATION CLEARLY. See space 17 below.)
AT SURFACE: 1470 ft./N; 850 ft./W line
AT TOP PROD. INTERVAL: Same as above
AT TOTAL DEPTH: Same as above

16. CHECK APPROPRIATE BOX TO INDICATE NATURE OF NOTICE, REPORT, OR OTHER DATA

REQUEST FOR APPROVAL TO:

TEST WATER SHUT-OFF ☐
FRACTURE TREAT ☐
SHOOT OR ACIDIZE ☐
REPAIR WELL ☐
PULL OR ALTER CASING ☐
MULTIPLE COMPLETE ☐
CHANGE ZONES ☐
ABANDON* ☐
(other) ☐

SUBSEQUENT REPORT OF:

☒
☐
☐
☐
☐
☐
☐
☐

5. LEASE
S.F. 077865

6. IF INDIAN, ALLOTTEE OR TRIBE NAME

7. UNIT AGREEMENT NAME

8. FARM OR LEASE NAME
Albright

9. WELL NO.
2-J

10. FIELD OR WILDCAT NAME
Bloomfield Chacra Extension
Aztec Pictured Cliffs

11. SEC., T., R., M. OR BLK. AND SURVEY OR AREA
Sec. 22, T-29N, R-10W, N.M.P.M.

12. COUNTY OR PARISH
San Juan

13. STATE
New Mexico

14. API NO.

15. ELEVATIONS (SHOW DF, KDB, AND WD)
5649 Gr.

(NOTE: Report results of multiple completion or zone change on Form 9-330.)

17. DESCRIBE PROPOSED OR COMPLETED OPERATIONS (Clearly state all pertinent details, and give pertinent dates, including estimated date of starting any proposed work. If well is directionally drilled, give subsurface locations and measured and true vertical depths for all markers and zones pertinent to this work.)*

1. Spudded 12 1/4" surface hole at 3:00 p.m. 7-10-79.
2. Drilled to T.D. of 278 ft. R.K.B.
3. Ran 265 ft. of 7-5/8", 26.40# casing. Landed at 275 ft. R.K.B.
4. Cemented with 200 sacks of class "B" with 2% Calcium Chloride. Plug down at 9:00 a.m. 7-11-79. Cement circulated to surface.
5. Waited on cement for 12 hours.
6. Pressure-tested casing to 1000 PSIG for 15 minutes. Held OK.

Subsurface Safety Valve: Manu. and Type

Set @ _____ Ft.

18. I hereby certify that the foregoing is true and correct

SIGNED Kenneth E. Roddy TITLE Production Supt. DATE July 16, 1979

(This space for Federal or State office use)

APPROVED BY _____
CONDITIONS OF APPROVAL, IF ANY:

TITLE _____ DATE _____

U. S. GEOLOGICAL SURVEY
FARMINGTON, N. M.
*See Instructions on Reverse Side

Wymacc

Jim Lewis

NEW MEXICO OIL CONSERVATION COMMISSION
WELL LOCATION AND ACREAGE DEDICATION PLAT

Form C-102
Supersedes C-1
Effective 1-1-61

All distances must be from the outer boundaries of the Section.

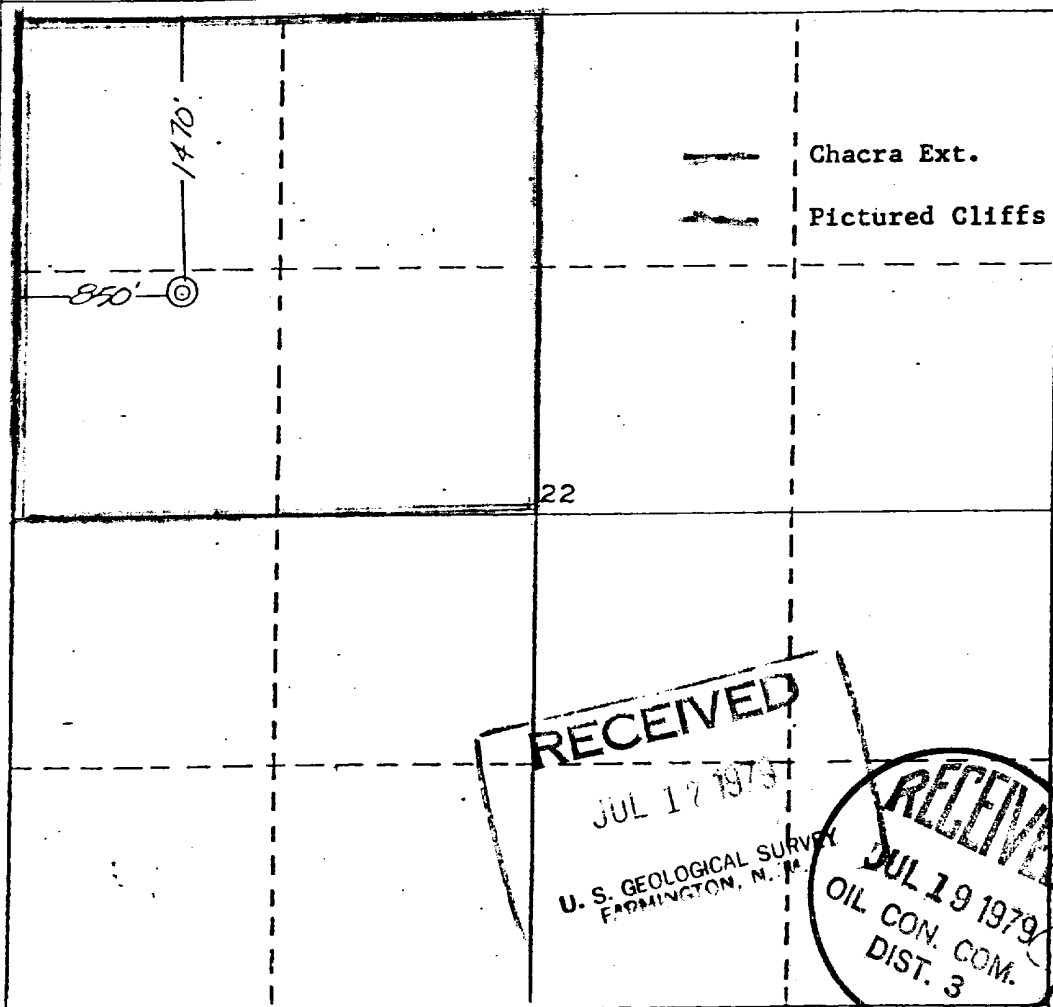
Operator SUPRON ENERGY CORPORATION			Lease ALBRIGHT		Well No. 2-3
Unit Letter E	Section 22	Township 29 NORTH	Range 10 WEST	County SAN JUAN	
Actual Footage Location of Well: 1470 feet from the NORTH line and 850 feet from the WEST line					
Ground Level Elev. 5649	Producing Formation Chacra Ext. Pictured Cliffs		Pool Bloomfield Aztec	Dedicated Acreage: NW 1/4 160 Acres	

1. Outline the acreage dedicated to the subject well by colored pencil or hatchure marks on the plat below.
2. If more than one lease is dedicated to the well, outline each and identify the ownership thereof (both as to working interest and royalty).
3. If more than one lease of different ownership is dedicated to the well, have the interests of all owners been consolidated by communitization, unitization, force-pooling, etc?

☐ Yes ☐ No If answer is "yes," type of consolidation _____

If answer is "no," list the owners and tract descriptions which have actually been consolidated. (Use reverse side of this form if necessary.) _____

No allowable will be assigned to the well until all interests have been consolidated (by communitization, unitization, forced-pooling, or otherwise) or until a non-standard unit, eliminating such interests, has been approved by the Commission.



CERTIFICATION

I hereby certify that the information contained herein is true and complete to the best of my knowledge and belief.

Rudy D. Motto

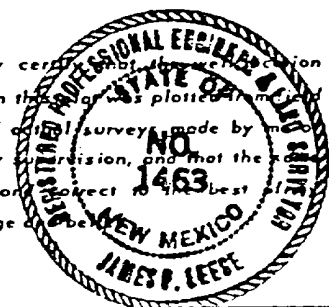
Name
Rudy D. Motto

Position
Area Superintendent

Company
SUPRON ENERGY CORPORATION

Date
July 16, 1979

I hereby certify that the information shown on this plat was plotted from the notes of actual survey made by me under my supervision, and that the same is true and correct to the best of my knowledge and belief.



Date Surveyed
12 April 1979

Registered Professional Engineer
and/or Land Surveyor

James P. Leese
James P. Leese

Certificate No.
1463

RECEIVED

JUL 17 1979

U. S. GEOLOGICAL SURVEY
FARMINGTON, N. M.

RECEIVED

JUL 19 1979
OIL CON. COM.
DIST. 3

0 330 660 990 1320 1650 1980 2310 2640 2970 3300 3630 3960 4290 4620 4950 5280 5610 5940 6270 6600

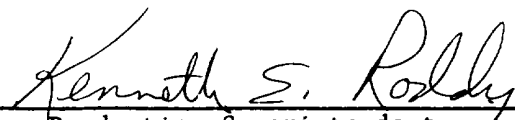
777HALL

✓

OIL CONSERVATION DIVISION
Deviation Tabulation Report

SUPRON ENERGY CORPORATION	Albright No. 2-J	22	29-N	10-W
Operator	Well Name & No.	Sec.	Twp.	Rge.

<u>DEPTH</u>	<u>DEVIATION</u>	<u>DEPTH</u>	<u>DEVIATION</u>
278 Ft.	1°	1886 Ft.	3/4°
773 Ft.	1-1/4°	2403 Ft.	3/4°
931 Ft.	2°	2883 Ft.	3/4°
1273 Ft.	2°	3121 Ft.	0°
1382 Ft.	2-1/4°	3225 Ft.	0°


Production Superintendent

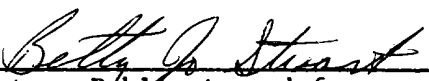
STATE OF NEW MEXICO }
 } ss
COUNTY OF SAN JUAN }

On this 3rd day of October, 19 79, before as personally appeared

Kenneth E. Roddy, to me known to be the person described in
and who executed the foregoing instrument and acknowledged that he executed the same as his
free act and deed.

IN WITNESS WHEREOF, I have set my hand and seal of office on this 3rd day
of October, 19 79.




Notary Public in and for
San Juan County, New Mexico

My Commission Expires:

August 25, 1980

MULTIPOINT AND ONE POINT BACK PRESSURE TEST FOR GAS WELL

Type Test <input checked="" type="checkbox"/> Initial <input type="checkbox"/> Annual <input type="checkbox"/> Special					Test Date 10-2-79	
Company SUPRON ENERGY CORPORATION				Connection Southern Union Gathering Company		
Pool Aztéc				Formation Pictured Cliffs		Unit
Completion Date 9-15-79		Total Depth 3225		Plug Back TD 3183		Elevation 5658 KB
Casing Size 4.500		Wt. 9.500		Set At 3225		Well No. 2-J
Perforations From 2006 To 2038		Perforations From To		Unit Sec. Twp. Rye. E 22 29N 10W		
Type Well - Single - Dradhead - G.C. or G.O. Multiple Dual - Gas - Gas				Packer Set At 3006		County San Juan
Producing Thru Casing		Reservoir Temp. °F P		Mean Annual Temp. °F		State New Mexico
L 1997	H 0.620	Gg	% CO ₂	% N ₂	% H ₂ S	Prover Meter Run Taps

FLOW DATA						TUBING DATA		CASING DATA		Duration of Flow	
NO.	Prover Line Size	X	Orifice Size	Press. p.s.i.g.	Diff. h _w	Temp. °F	Press. p.s.i.g.	Temp. °F	Press. p.s.i.g.	Temp. °F	
SI	2"		3/4"						368		16 days
1.									38	60°	3 hours
2.											
3.											
4.											
5.											

RATE OF FLOW CALCULATIONS							
NO.	Coefficient (24 Hour)	$\sqrt{h_w P_m}$	Pressure P _m	Flow Temp. Factor Ft.	Gravity Factor Fg	Super Compress. Factor, Fpv	Rate of Flow Q, Mcfd
1	12.3650		50	1.0000	0.9837	1.000	608
2.							
3.							
4.							
5.							

NO.	P _r	Temp. °R	T _r	Z	Gas Liquid Hydrocarbon Ratio	A.P.I. Gravity of Liquid Hydrocarbon	Specific Gravity Separator Gas	Specific Gravity Flowing Fluid	Critical Pressure	Critical Temperature
1.							XXXXXX	XXXXXX		
2.										
3.										
4.										
5.										

P _c 380 P _c ² 144,400		(1) $\frac{P_c^2}{P_r^2 - P_w^2} = 1.0208$		(2) $\left[\frac{P_r^2}{P_r^2 - P_w^2} \right]^n = 1.0176$	
NO.	P _r ²	P _w	P _r ²	P _r ² - P _w ²	
1			2936	141,464	
2					
3					
4					
5					

Absolute Open Flow 619 Mcfd @ 15.025		Angle of Slope 0.85	
Remarks:			
Approved By Division		Conducted By: Randy Martinez	
Calculated By: Kenneth E. Roddy		Checked By:	

MULTIPOINT AND ONE POINT BACK PRESSURE TEST FOR GAS WELL

Type Test <input checked="" type="checkbox"/> Initial <input type="checkbox"/> Annual <input type="checkbox"/> Special						Test Date 9-23-79			
Company SUPRON ENERGY CORPORATION				Connection Southern Union Gathering Company					
Pool Bloomfield Ext.				Formation Chacra				Unit	
Completion Date 9-15-79		Total Depth 3225		Plug Back TD 3183		Elevation 5658 KB		Farm or Lease Name Albright	
Coq. Size 4.500	Wt. 9.50	d 4.090	Set At 3225	Perforations: From 3072 To 3082		Well No. 2-J			
Thq. Size 2.375	Wt. 4.70	d 1.995	Set At 3006	Perforations: From No Perforations To		Unit Sec. Twp. Rge. E 22 29N 10W			
Type Well - Single - Brdenhead - G.G. or G.O. Multiple Dual - Gas - Gas				Packer Set At 3006		County San Juan			
Producing Thru Tubing		Reservoir Temp. °F 8		Mean Annual Temp. °F		Baro. Press. - P _a 12		State New Mexico	
L 2997	H	G _g 0.620	% CO ₂	% N ₂	% H ₂ S	Prover	Meter Run	Taps	

FLOW DATA							TUBING DATA		CASING DATA		Duration of Flow
NO.	Prover Line Size	X	Orifice Size	Press. p.s.i.g.	Diff. h _w	Temp. °F	Press. p.s.i.g.	Temp. °F	Press. p.s.i.g.	Temp. °F	
SI	2"		3/4"				992				7 days
1.							146	73°			3 hours
2.											
3.											
4.											
5.											

RATE OF FLOW CALCULATIONS							
NO.	Coefficient (24 Hour)	$\sqrt{h_w P_m}$	Pressure P _m	Flow Temp. Factor F _t	Gravity Factor F _g	Super Compress. Factor, F _{pv}	Rate of Flow Q, Mcfd
1	12.3650		158	0.9877	0.9837	1.012	1921
2.							
3.							
4.							
5.							

NO.	P _r	Temp. °R	T _r	Z	Gas Liquid Hydrocarbon Ratio	Mcf/bbl.
1.					A.P.I. Gravity of Liquid Hydrocarbons	Deg.
2.					Specific Gravity Separator Gas	XXXXXX
3.					Specific Gravity Flowing Field	XXXXX
4.					Critical Pressure	P.S.I.A.
5.					Critical Temperature	R

NO.	P _r ²	P _w ²	P _w ²	P _r ² - P _w ²	(1) $\frac{P_r^2}{P_r^2 - P_w^2} =$	(2) $\left[\frac{P_r^2}{P_r^2 - P_w^2} \right]^n =$
1			66,066	941,950	1.0701	1.0521
2						
3						
4						
5						

Absolute Open Flow 2021		Mcf/d @ 15.025	Angle of Slope	Slope, n 0.75
Remarks:				
Approved By Division Conducted By: John C. Rector Calculated By: Kenneth E. Roddu Checked By:				