

**NEW MEXICO OIL CONSERVATION COMMISSION
WELL LOCATION AND ACREAGE DEDICATION PLAT**

Form C-102
Supersedes C-128
Effective 1-1-65

All distances must be from the outer boundaries of the Section.

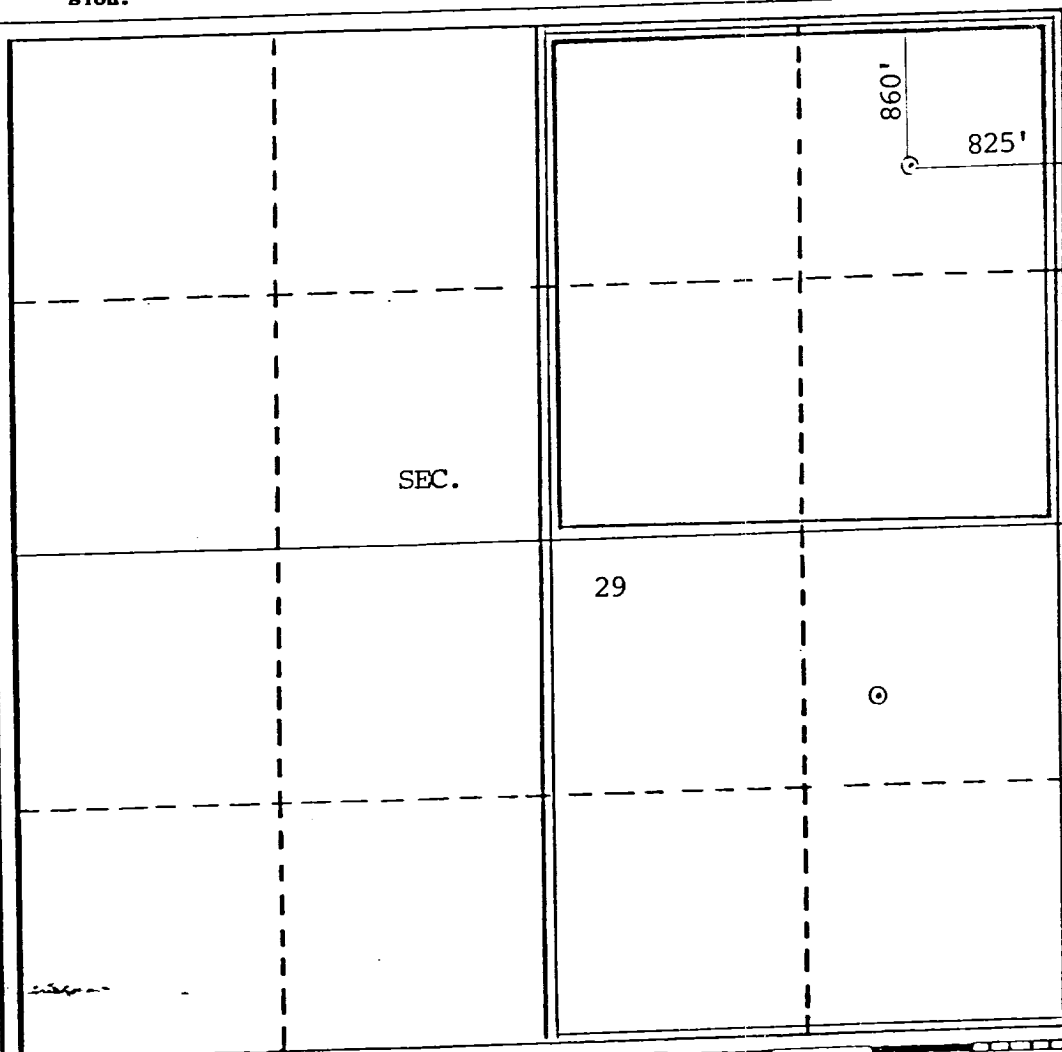
Operator Southland Royalty Company			Lease Mangum		Well No. #5E
Unit Letter A	Section 29	Township 29N	Range 11W	County San Juan	
Actual Footage Location of Well: 860' feet from the North line and 825' feet from the East line					
Ground Level Elev: 5399'	Producing Formation Dakota-Chacra		Pool Basin - Undesignated		Dedicated Acreage: 320 4/160 Acres

1. Outline the acreage dedicated to the subject well by colored pencil or hachure marks on the plat below.
2. If more than one lease is dedicated to the well, outline each and identify the ownership thereof (both as to working interest and royalty).
3. If more than one lease of different ownership is dedicated to the well, have the interests of all owners been consolidated by communitization, unitization, force-pooling, etc?

☐ Yes ☐ No If answer is "yes," type of consolidation _____

If answer is "no," list the owners and tract descriptions which have actually been consolidated. (Use reverse side of this form if necessary.) _____

No allowable will be assigned to the well until all interests have been consolidated (by communitization, unitization, forced-pooling, or otherwise) or until a non-standard unit, eliminating such interests, has been approved by the Commission.



CERTIFICATION

I hereby certify that the information contained herein is true and complete to the best of my knowledge and belief.

R. E. Fielder

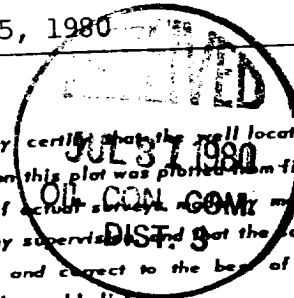
Name
Robert E. Fielder

Position
District Engineer

Company
Southland Royalty Company

Date
July 25, 1980

I hereby certify that the well location shown on this plat was plotted from field notes of actual survey, and that the same is true and correct to the best of my knowledge and belief.



Date Surveyed
August 7, 1979

Registered Professional Engineer
and/or Land Surveyor

FRED B. KERR

Certificate No.
3950