

UNITED STATES
DEPARTMENT OF THE INTERIOR
GEOLOGICAL SURVEY

30-045-23730

APPLICATION FOR PERMIT TO DRILL, DEEPEN, OR PLUG BACK

1a. TYPE OF WORK DRILL DEEPEN PLUG BACK

b. TYPE OF WELL
OIL WELL GAS WELL OTHER
SINGLE ZONE MULTIPLE ZONE

2. NAME OF OPERATOR
Supron Energy Corporation

3. ADDRESS OF OPERATOR
P.O. Box 808, Farmington, New Mexico 87401

4. LOCATION OF WELL (Report location clearly and in accordance with any State requirements.)
At surface 1635 Ft./North; 1550 Ft./East Line
At proposed prod. zone Same as above

5. LEASE DESIGNATION AND SERIAL NO.

NM-0702

6. IF INDIAN, ALLOTTEE OR TRIBE NAME

7. UNIT AGREEMENT NAME

8. FARM OR LEASE NAME

Wilson

9. WELL NO.

2

10. FIELD AND POOL, OR WILDCAT

~~Astee Chacra~~ ~~Undesignated Fruitland Ext.~~

11. SEC., T., R., M., OR BLK. AND SURVEY OR AREA

Sec. 31, T-29N, R-10W

N.M.P.M.

12. COUNTY OR PARISH 13. STATE

San Juan

New Mexico

14. DISTANCE IN MILES AND DIRECTION FROM NEAREST TOWN OR POST OFFICE*
4 Miles Southeast of Bloomfield, New Mexico

15. DISTANCE FROM PROPOSED* LOCATION TO NEAREST PROPERTY OR LEASE LINE, FT. (Also to nearest drig. unit line, if any) 1550
16. NO. OF ACRES IN LEASE 560

18. DISTANCE FROM PROPOSED LOCATION* TO NEAREST WELL, DRILLING, COMPLETED, OR APPLIED FOR, ON THIS LEASE, FT. 260
19. PROPOSED DEPTH 3050

17. NO. OF ACRES ASSIGNED TO THIS WELL 160

20. ROTARY OR CABLE TOOLS Rotary

21. ELEVATIONS (Show whether DF, RT, GR, etc.) 5582 GR

22. APPROX. DATE WORK WILL START* 10/1/79

PROPOSED CASING AND CEMENTING PROGRAM

SIZE OF HOLE	SIZE OF CASING	WEIGHT PER FOOT	SETTING DEPTH	QUANTITY OF CEMENT	
12-1/4"	7-5/8"	20.00	200	150 Sx.	
6-3/4"	4-1/2"	9.50	3050	300 Sx.	

We propose to drill a 12-1/4" hole to about 200 ft. and run new 7-5/8", 20.00#, H-40 casing to T.D. It will be cemented from 200 ft. to surface using about 150 sx. of class "B" with 2% Ca Cl. A 6-3/4" hole will be drilled with mud through the Chacra zone to about 3050 ft. New 4-1/2", 9.50#, K-55 casing will be run to T.D. and cemented with 150 sacks of 50-50 Poz mix with 1/4# Cello Flakes per sack and 2% gel to be followed by 150 sacks of class "B" cement. The well will be perforated and stimulated in the Chacra and Fruitland zones and a packer set between the zones. Tubing will be run to the Chacra. The Fruitland will be produced through the 4-1/2" casing.

This well will be drilled on acreage dedicated to a gas transporter.

IN ABOVE SPACE DESCRIBE PROPOSED PROGRAM: If proposal is to deepen or plug back, give data on present productive zone and proposed new productive zone. If proposal is to drill or deepen directionally, give pertinent data on subsurface locations and measured and true vertical depths. Give blowout preventer program, if any.

24. SIGNED Kenneth E. Roddy TITLE Production Superintendent DATE August 8, 1979

(This space for Federal or State office use)

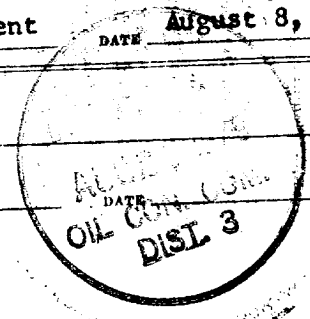
PERMIT NO. _____ APPROVAL DATE _____

APPROVED BY _____ TITLE _____

CONDITIONS OF APPROVAL, IF ANY:

ok Frank

N MacC



WELL LOCATION AND ACREAGE DEDICATION PLAT

Superior-C-128
Effective 1-1-65

All distances must be from the outer boundaries of the Section.

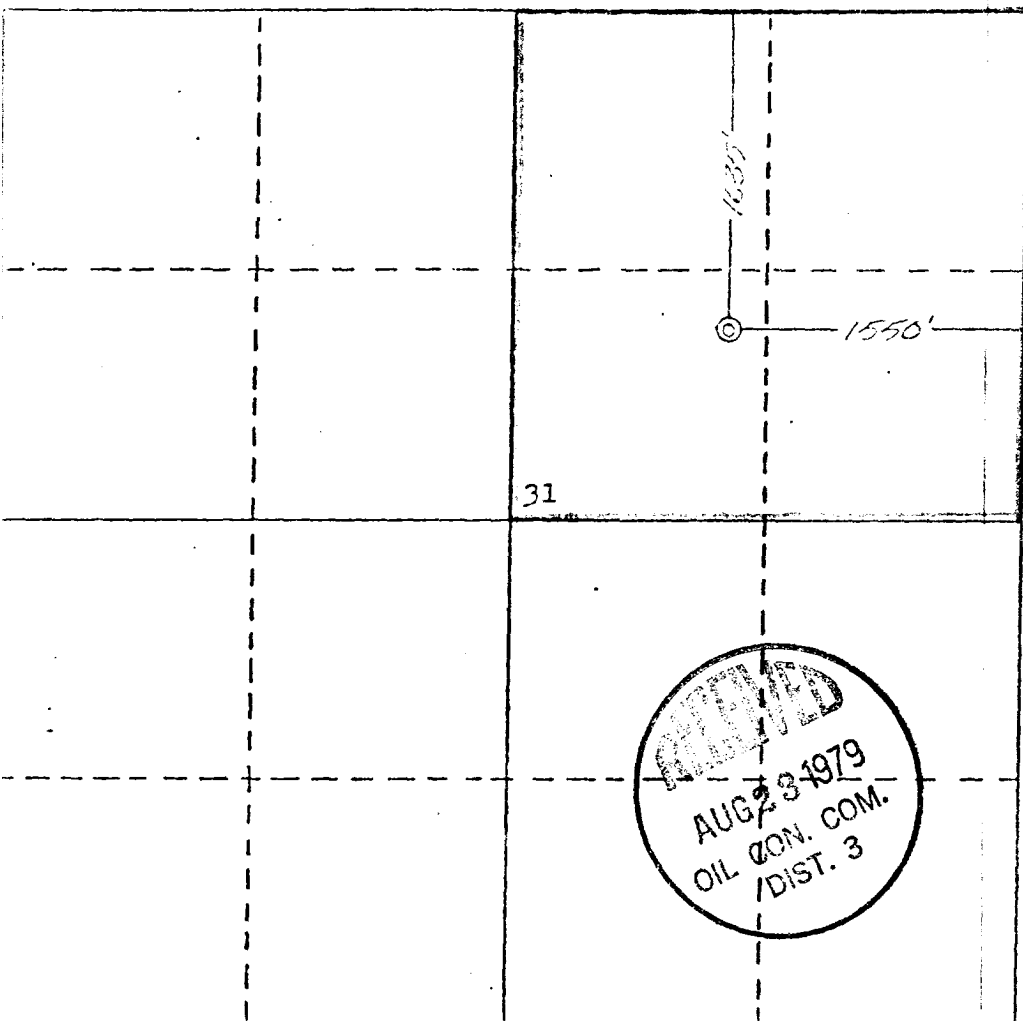
Operator SUPRON ENERGY CORPORATION		Lease WILSON			Well No. 2
Unit Letter G	Section 31	Township 29 NORTH	Range 10 WEST	County SAN JUAN	
Actual Footage Location of Well: 1635 feet from the NORTH line and 1550 feet from the EAST line					
Ground Level Elev. 5582	Producing Formation CHACRA FRUITLAND EXTENSION		Pool AZTEC - Bloomfield ext UNDESIGNATED / Aztec	Dedicated Acreage: NE 1/4 160 Acres	

1. Outline the acreage dedicated to the subject well by colored pencil or hachure marks on the plat below.
2. If more than one lease is dedicated to the well, outline each and identify the ownership thereof (both as to working interest and royalty).
3. If more than one lease of different ownership is dedicated to the well, have the interests of all owners been consolidated by communitization, unitization, force-pooling, etc?

Yes No If answer is "yes," type of consolidation _____

If answer is "no," list the owners and tract descriptions which have actually been consolidated. (Use reverse side of this form if necessary.) _____

No allowable will be assigned to the well until all interests have been consolidated (by communitization, unitization, forced-pooling, or otherwise) or until a non-standard unit, eliminating such interests, has been approved by the Commission.



CERTIFICATION

I hereby certify that the information contained herein is true and complete to the best of my knowledge and belief.

Rudy D. Motto

Name

Position

Area Superintendent

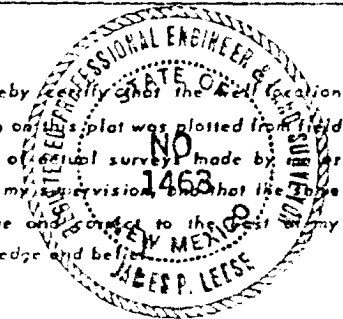
Company

SUPRON ENERGY CORPORATION

Date

July 13, 1979

I hereby certify that the location shown on this plat was plotted from field notes of actual survey made by me under my supervision and that the above is true and correct to the best of my knowledge and belief.



Date Surveyed

12 July 1979

Registered Professional Engineer and Licensed Surveyor

James P. Leece

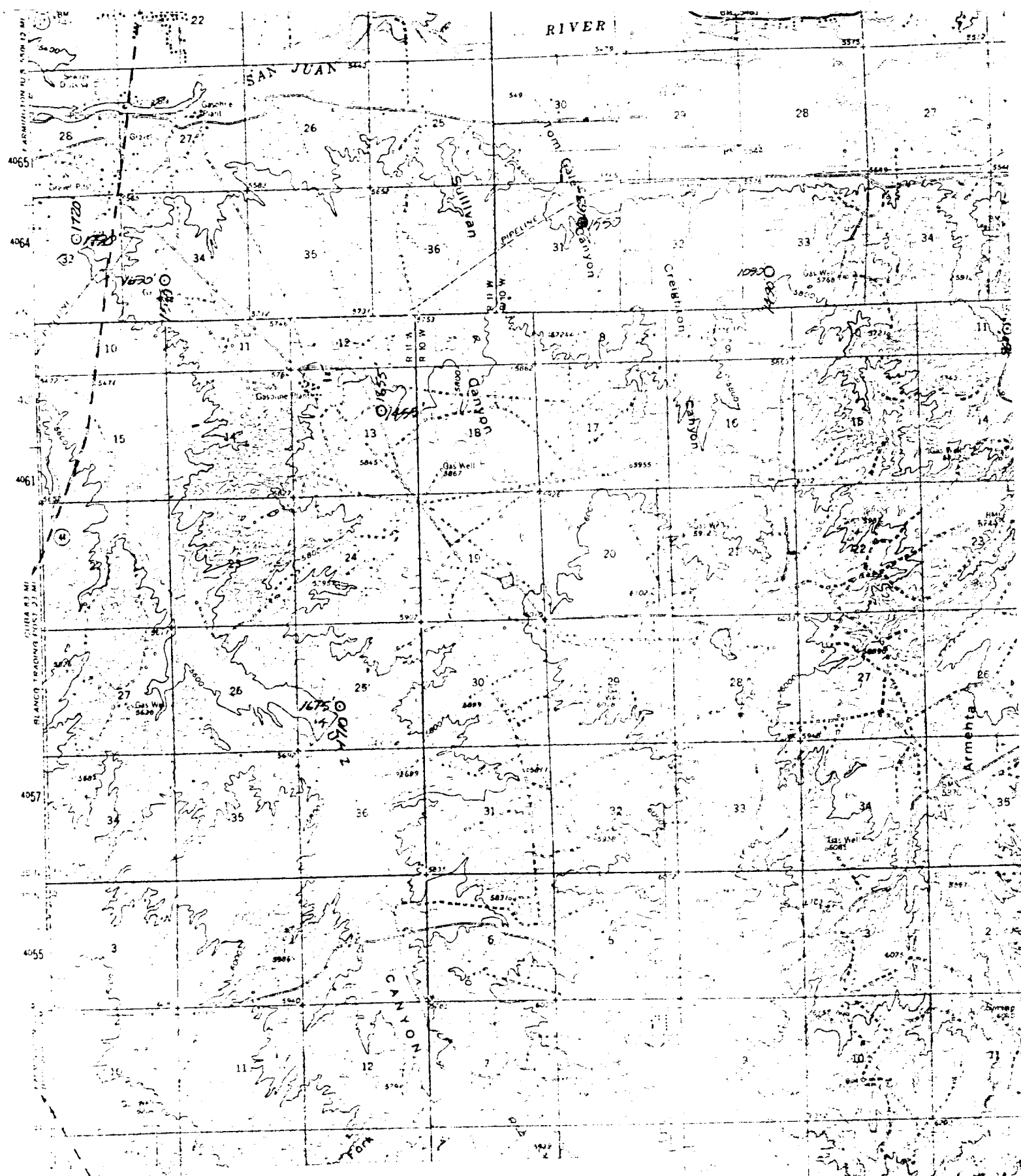
Certificate No.

1463

SUPRON ENERGY CORPORATION
WILSON NO. 2
1635' N; 1550' E line
Sec. 31, T-29N, R-10W
San Juan County, New Mexico.

SUPPLEMENT TO FORM 9-331C

1. The Geologic name of the surface formation is "Wasatch".
2. The estimated tops of important Geologic markers are:
 - A. Base of Ojo Alamo 1200
 - B. Top of Fruitland 1600
 - C. Top of Pictured Cliffs 1785
 - D. Top of Chacra 2380
3. The estimated depth at which anticipated water, oil, or other mineral - bearing formations are expected to be encountered are:
 - A. Base of Ojo Alamo 1200 - Water
 - B. Top of Fruitland 1600 - Gas
 - C. Top of Pictured Cliffs 1785 - Gas
 - D. Top of Chacra 2380 - Gas
4. The casing program is shown on Form 9-331C and all casing is new.
5. The lessee's pressure - control equipment schematics are attached, along with minimum specifications, testing procedures, and frequencies.
6. The type, estimated volumes, and characteristics of the circulating media are as follows:
 - A. 0 - 200 ft. - Natural mud.
 - B. 200 - 3050 ft. - Permaloid non-dispersed mud containing 167 sx gel, 67 sx permaloid and 10 sx of C.M.C.
7. The auxiliary equipment to be used will be floats at the bit and a sub on the floor with a full-opening valve to be stabbed into the drill pipe when the kelly is not in the string.
8. This well is in an area which is partially developed; therefore we will not have a testing and coring program. The logging program will be as follows:
 - A. E.S. Induction
 - B. Gamma Ray Density.
 - C. Gamma Ray Correlation.
 - D. Cement Bond Log.
9. We do not expect to find any abnormal pressures, temperatures or hydrogen sulphide problems in this partially - developed area.
10. The anticipated starting date for this well is October 1, 1979.

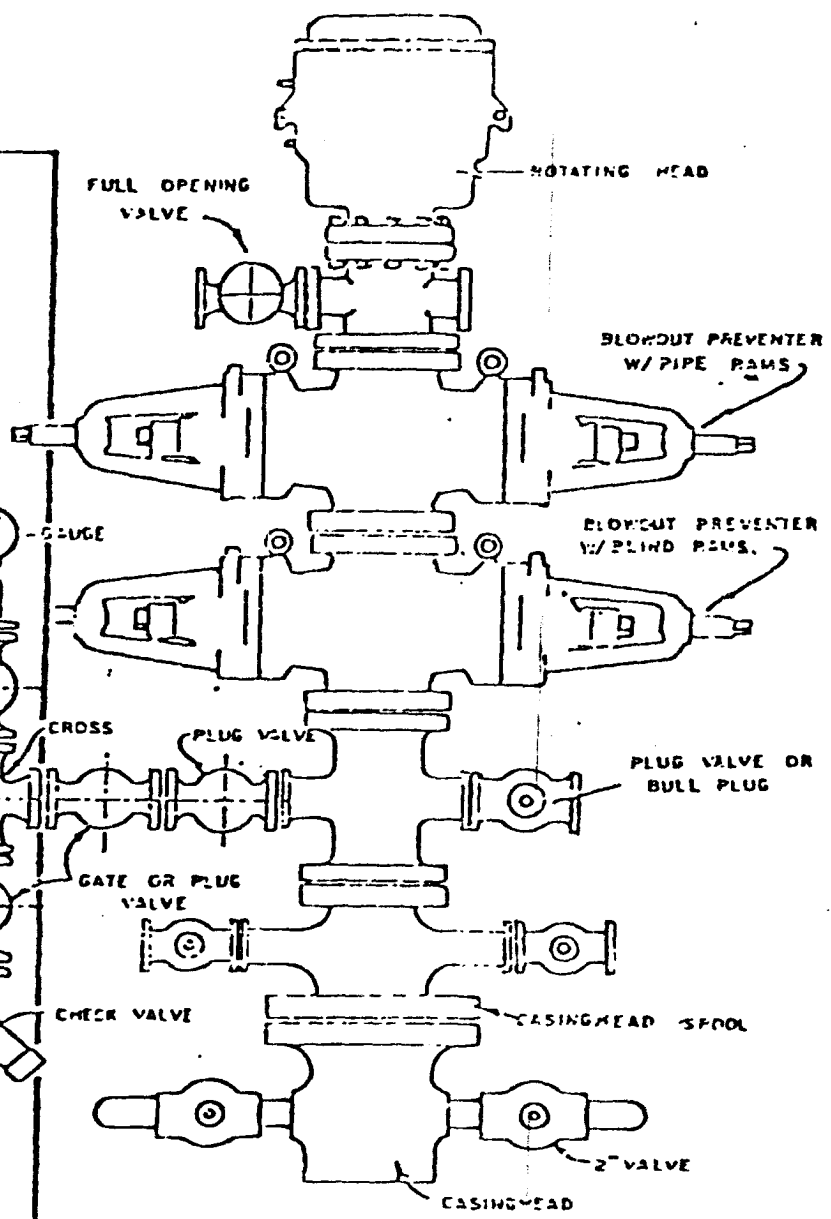
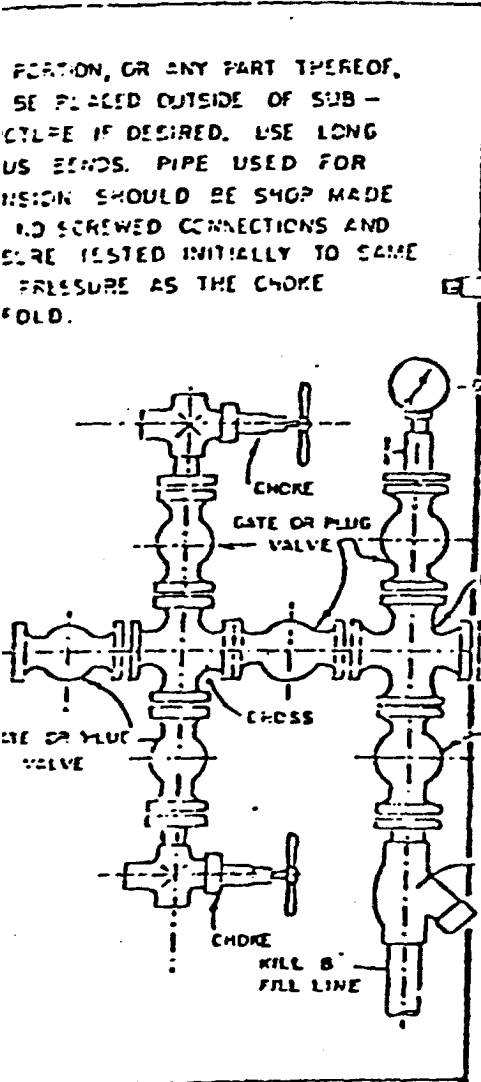


Supron Energy Corporation
 WILSON #2
 SW $\frac{1}{4}$ NE $\frac{1}{4}$ Sec. 31, T29N, R10W,
 NMPM, San Juan County, N.M.
 1635 F/NL - 1550 F/EL
 Elevation - 5582

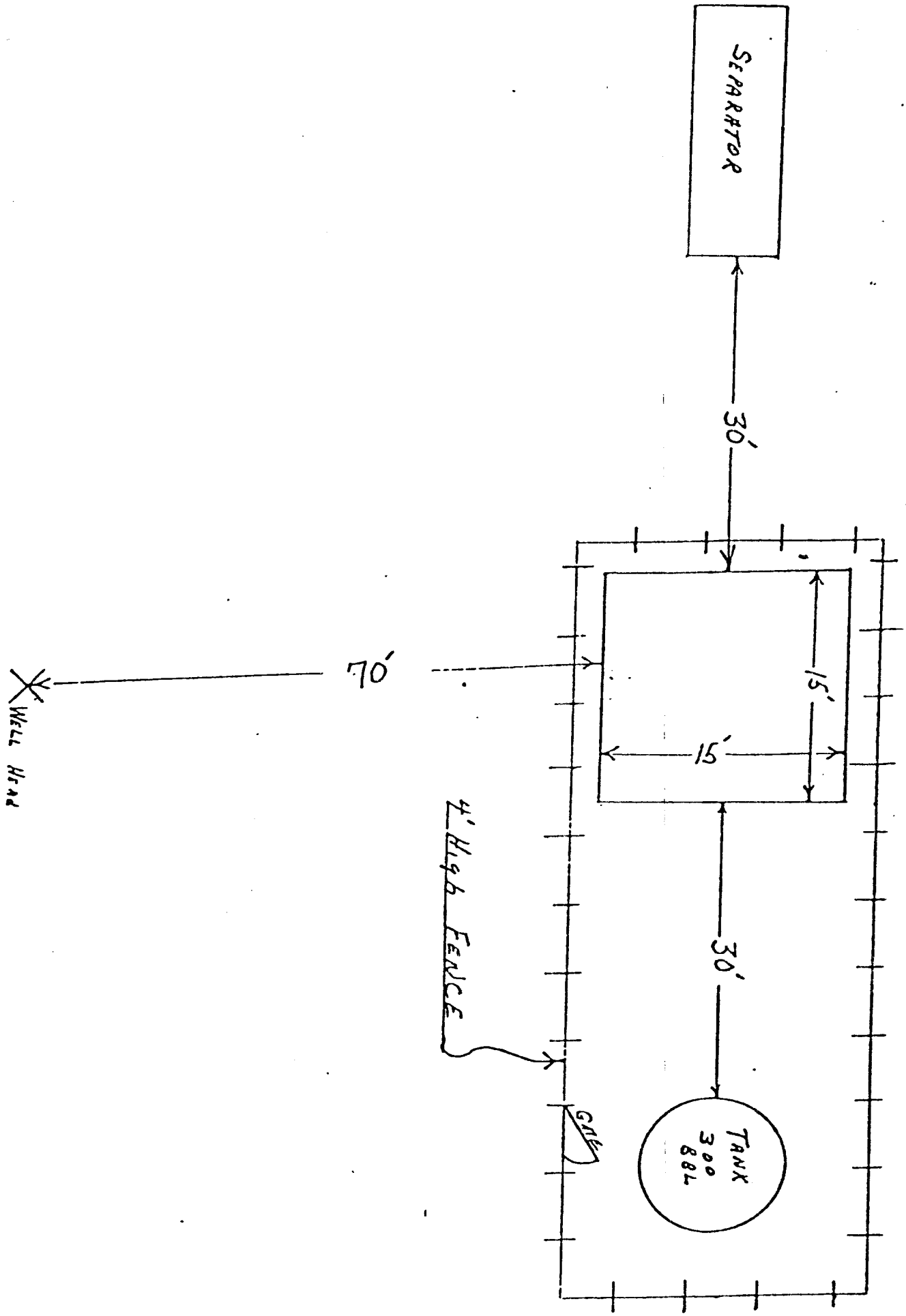
Armenta
 Peak

and prior to drilling out with the results to be logged on the drillers report.

The B.O.P. and all valve and fittings are rated at 3000 psi working pressure, and hydraulically operated



BLOWOUT PREVENTER HOOKUP



SUPRON ENERGY CORPORATION

POST OFFICE BOX 808
FARMINGTON, NEW MEXICO 87401

I hereby certify that I, or persons under my direct supervision, have inspected the proposed drillsite and access route; that I am familiar with the conditions which presently exist; that the statements made in this plan are, to the best of my knowledge, true and correct; and, that the work associated with the operations proposed herein will be performed by SUPRON ENERGY CORPORATION and its contractors subcontractors in conformity with this plan and the terms and conditions under which it is approved.

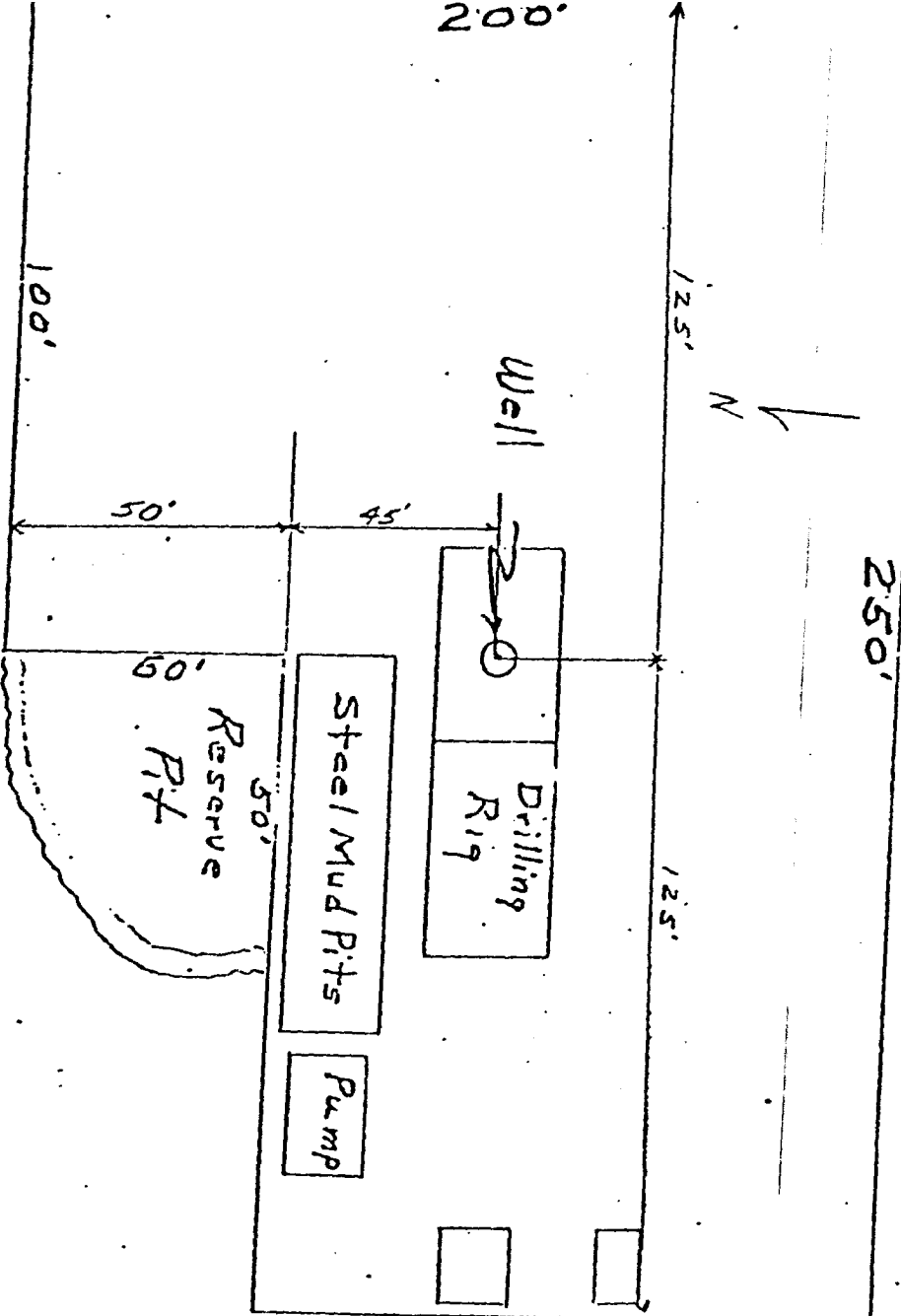
SUPRON ENERGY CORPORATION



Rudy D. Motto
Area Superintendent
Phone: 325-3587

SUPRON ENERGY CORPORATION
 LOCATION AND EQUIPMENT LAYOUT
 WILSON NO. 2

1635 Feet from the North line and 1550 feet from the East line of
 Section 31, Township 29 North, Range 10 West, N.M.P.M., San Juan
 County, New Mexico.



Latrine
 2' x 4' x 4'

Burn Pit
 8' x 12' x 12'

1. Topographical map showing proposed location and access road.
2. No access road will be required.
3. Map showing existing producing facilities.
4. Location of surface equipment if required.
5. Drilling and completion water will be obtained from the San Juan River.
6. All pits will be fenced and constructed in such a way as to prevent litter on the location.
7. We will dispose of all waste by placing it in the reserve pit and burying it when the well is completed.
8. There will be no camp at or near the well site.
9. There will be no air strip.
10. A plat is attached showing the location of the rig, mud tanks, reserve pit, burn pit, etc.
11. A letter of certification is attached. The operator representative for compliance purposes is Rudy D. Motto, Area Superintendent, P.O. Box 808, Farmington, New Mexico 87401. Phone (505) 325-3587.
12. After the well is completed, the location will be cleaned up, and bladed. The reserve pit will be allowed to dry and then filled and restored to its natural state.
13. The soil is sandy loam with principal vegetation being Sagebrush, Pinon, and Juniper.