

UNITED STATES
DEPARTMENT OF THE INTERIOR
GEOLOGICAL SURVEY

APPLICATION FOR PERMIT TO DRILL, DEEPEN, OR PLUG BACK

1a. TYPE OF WORK

DRILL ☒DEEPEN ☐PLUG BACK ☐

b. TYPE OF WELL

OIL WELL ☐ GAS WELL ☒ OTHER ☐SINGLE ZONE ☒MULTIPLE ZONE ☐

2. NAME OF OPERATOR

Supron Energy Corporation

3. ADDRESS OF OPERATOR

P.O. Box 808, Farmington, New Mexico 87401

4. LOCATION OF WELL (Report location clearly and in accordance with any State requirements*)

At surface

1720 ft./N; 1790 ft./E line

At proposed prod. zone

Same as above

15. DISTANCE IN MILES AND DIRECTION FROM NEAREST TOWN OR POST OFFICE*

2 miles south of Bloomfield, New Mexico

16. DISTANCE FROM PROPOSED*

LOCATION TO NEAREST 1720

PROPERTY OR LEASE LINE, FT. 1720

(Also to nearest drig. unit line, if any)

18. DISTANCE FROM PROPOSED LOCATION*
TO NEAREST WELL, DRILLING, COMPLETED,
OR APPLIED FOR, ON THIS LEASE, FT.

1083

19. PROPOSED DEPTH

1600

21. ELEVATIONS (Show whether DF, RT, GR, etc.)

5560 GR.

23.

PROPOSED CASING AND CEMENTING PROGRAM

SIZE OF HOLE	SIZE OF CASING	WEIGHT PER FOOT	SETTING DEPTH	QUANTITY OF CEMENT
9-7/8"	7-5/8" (new)	20.00#	200*	125 sacks
6-3/4"	2-7/8" (new)	6.50	1600	200 sacks

We propose to drill this well through the Fruitland zone to a T.D. of 1600 ft. using mud. 2-7/8", 6.50#, E.U.E., J-55 tubing will be run to 1600 ft. as production casing string. It will be cemented with about 200 sacks of class "B" with 1/4 lb. cello-flakes per sack. The well will be perforated and stimulated in the Fruitland zone and produced through the 2-7/8" tubing.

The well will be drilled on acreage dedicated to a gas transporter.

* May set 70' of surface casing & cement up through Ojo Alamo (and verify cement top by log) when setting long string or if plugging well, set plug across Ojo Alamo.

IN ABOVE SPACE DESCRIBE PROPOSED PROGRAM: If proposal is to deepen or plug back, give data on present productive zone and proposed new productive zone. If proposal is to drill or deepen directionally, give pertinent data on subsurface locations and measured and true vertical depths. Give blowout preventer program, if any.

24.

SIGNED

Kenneth E. Roddy

TITLE Production Superintendent

DATE August 2, 1979

(This space for Federal or State office use)

PERMIT NO.

APPROVAL DATE

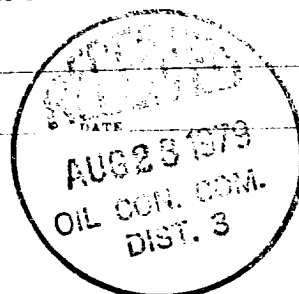
APPROVED BY

TITLE

CONDITIONS OF APPROVAL, IF ANY:

ok Fred

WYMOCC



NEW MEXICO OIL CONSERVATION COMMISSION
WELL LOCATION AND ACREAGE DEDICATION PLAT

Superintendent C-128
Effective 1-1-65

All distances must be from the outer boundaries of the Section.

Supron Energy Corporation		Lease		SUMMIT VILES		Well No.	5
Section	33	Township	29 NORTH	Range	11 WEST	County	SAN JUAN
From the	NORTH	line and	1790	feet from the	EAST	line	
Producing Formation	Fruitland	Pool	Aztec Extension		Dedicated Acreage:	NE 1/4	160 Acres

Area dedicated to the subject well by colored pencil or hatchure marks on the plat below.

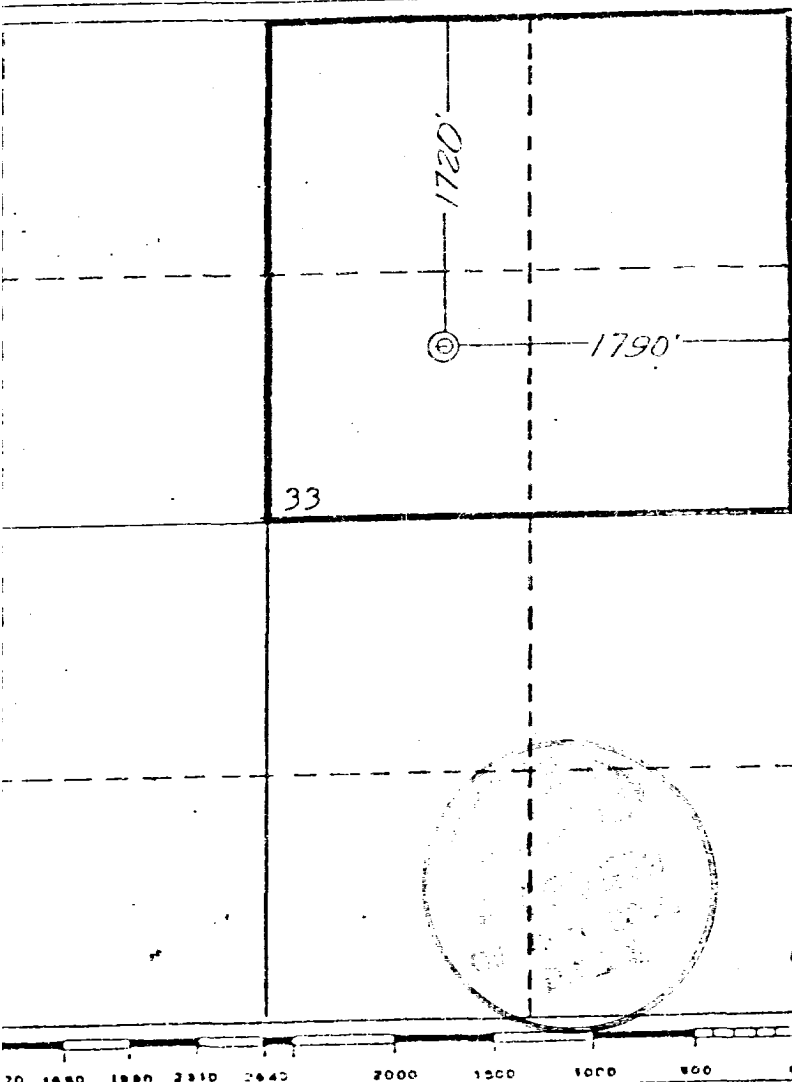
If lease is dedicated to the well, outline each and identify the ownership thereof (both as to working interest and royalty).

If lease of different ownership is dedicated to the well, have the interests of all owners been consolidated (by communitization, unitization, force-pooling, etc)?

No. If answer is "yes," type of consolidation _____

If "yes," list the owners and tract descriptions which have actually been consolidated. (Use reverse side of plat if necessary.) _____

If lease will be assigned to the well until all interests have been consolidated (by communitization, unitization, force-pooling, or otherwise) or until a non-standard unit, eliminating such interests, has been approved by the Commission, _____



CERTIFICATION

I hereby certify that the information contained herein is true and complete to the best of my knowledge and belief.

Rudy D. Motto

Name

Rudy D. Motto

Position

Area Superintendent

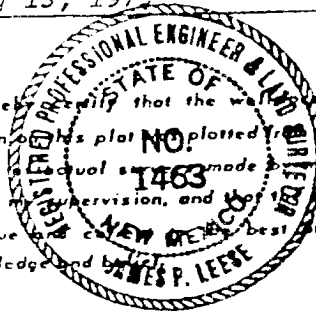
Company

Supron Energy Corporation

Date

July 13, 1979

I hereby certify that the information shown on this plat is true and complete to the best of my knowledge and belief, and that the same is true and correct to the best of my knowledge and belief.



Date Surveyed

11 July 1979

Registered Professional Engineer and/or Land Surveyor

James P. Lease
James P. Lease

Certificate No.

1463

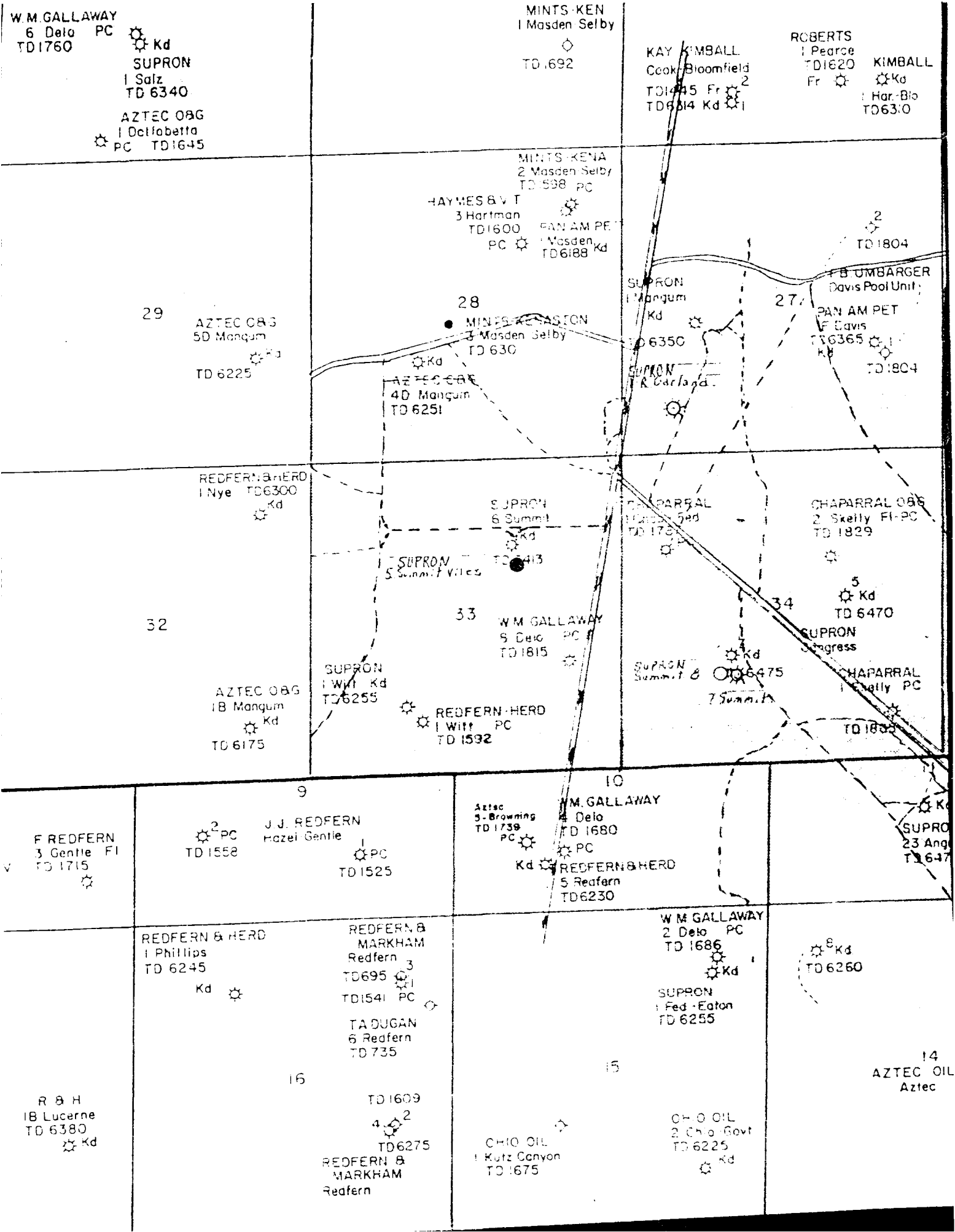
SUMMIT VILES NO. 5

UNIT G, Sec. 33, T-29N, R-11W

SAN JUAN COUNTY, NEW MEXICO

1. The Geologic name of the surface formation is "Wasatch".
2. The estimated tops of important Geologic markers are:
 - A. Base of Ojo Alamo 1110
 - B. Top of Fruitland 1360
3. The estimated depth at which anticipated water, oil, or other mineral - bearing formations are expected to be encountered are:
 - A. Base of Ojo Alamo 1110 - Water
 - B. Top of Fruitland 1360 - Gas
4. The casing program is shown on Form 9-331C and all casing is new.
5. The lessee's pressure - control equipment schematics are attached, along with minimum specifications, testing procedures, and frequencies.
6. The type, estimated volumes, and characteristics of the circulating media are as follows:
 - A. 0 - 200 ft. - Natural mud.
 - B. 200 - 1600 ft. - Permaloid non-dispersed mud containing 167 sx. of gel, 67 sx of permaloid, and 10 sx C.M.C.
7. The auxiliary equipment to be used will be floats at the bit and a sub on the floor with a full-opening valve to be stabbed into the drill pipe when the kelly is not in the string.
8. This well is in an area which is partially developed; therefore we will not have a testing and coring program. The logging program will be as follows:
 - A. E. S. Induction.
 - B. Gamma Ray Density.
 - C. Gamma Ray Correlation.
 - D. Cement Bond Log.
9. We do not expect to find any abnormal pressures, temperatures or hydrogen sulphide problems in this partially - developed area.
10. The anticipated starting date for this well is October 15, 1979.

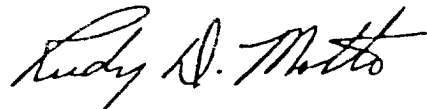
Supron Energy Corporation
SUMMIT VILES #5
SW $\frac{1}{4}$ NE $\frac{1}{4}$ Sec.33, T29N. R11W,
N.M.P.M., San Juan County, NM
1720 F/NL - 1790 F/EL
Elevation - 5560



SUPRON ENERGY CORPORATION
Post Office Box 808
FARMINGTON, NEW MEXICO 87401

I hereby certify that I, or persons under my direct supervision, have inspected the proposed drillsite and access route; that I am familiar with the conditions which presently exist; that the statements made in this plan are, to the best of my knowledge, true and correct; and, that the work associated with the operations proposed herein will be performed by SUPRON ENERGY CORPORATION and its contractors subcontractors in conformity with this plan and the terms and conditions under which it is approved.

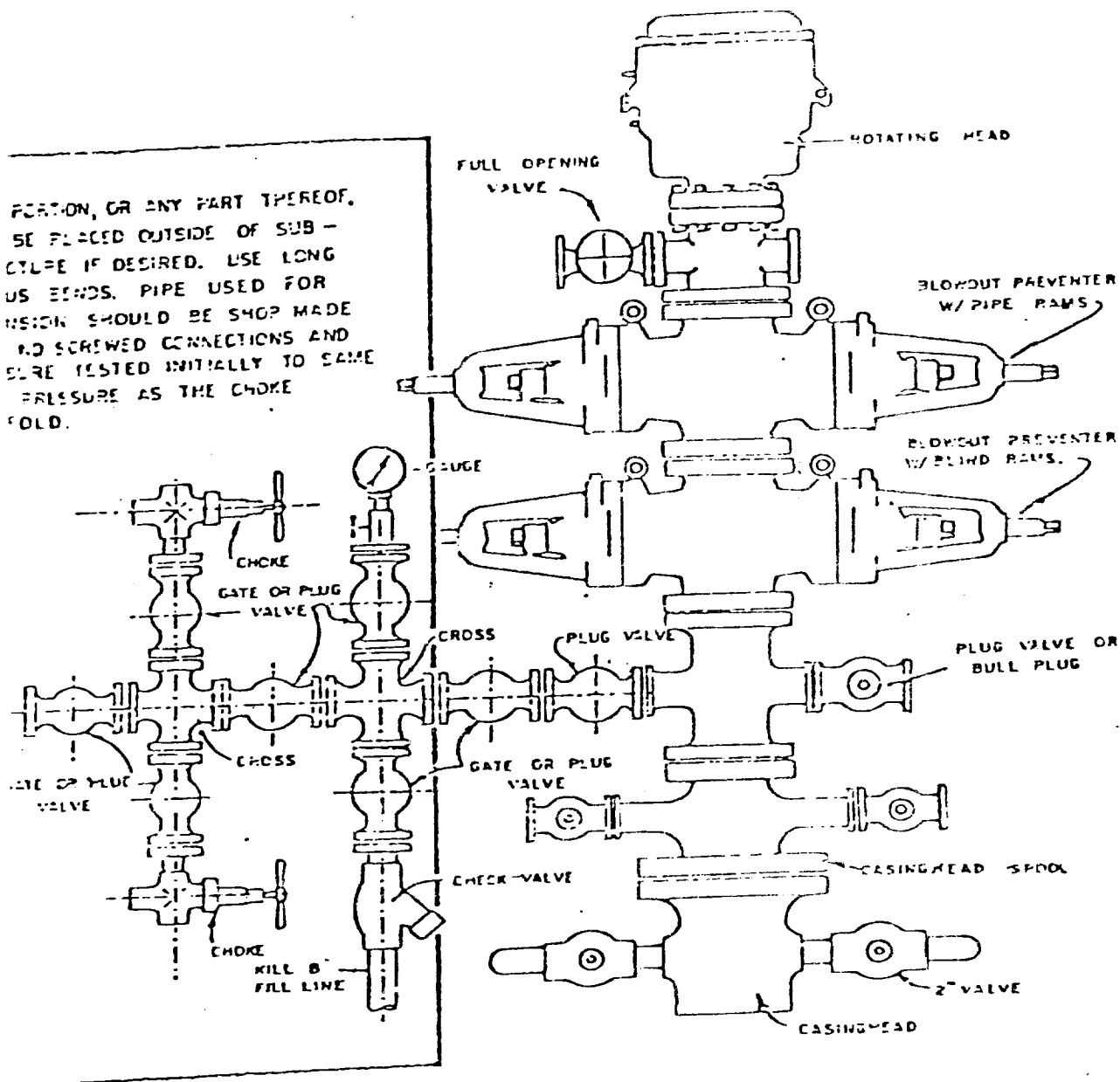
SUPRON ENERGY CORPORATION

A handwritten signature in cursive script, reading "Rudy D. Motto".

Rudy D. Motto
Area Superintendent
Phone: 325-3587

Blowout Preventer will be tested daily and prior to drilling out with the results to be logged on the drillers report.

The B.O.P. and all valve and fittings are rated at 3000 psi working pressure, and hydraulically operated

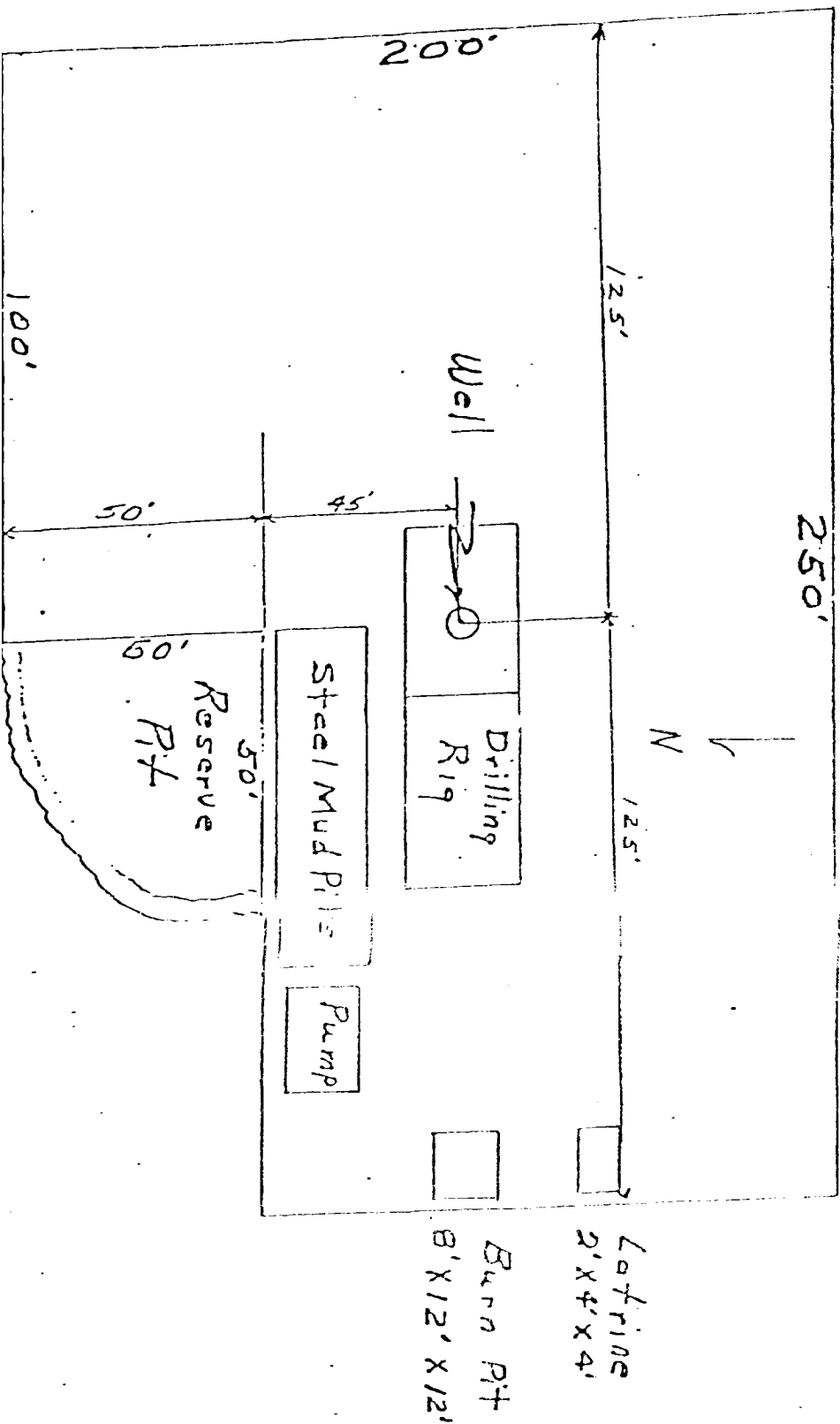


BLOWOUT PREVENTER HOOKUP

SUPRON ENERGY CORPORATION
LOCATION AND EQUIPMENT LAYOUT

SUMMIT VILES NO. 5

1720 Feet from the North line and 1790 feet from the East line of Section 33, Township 29 North, Range 11 West, N.M.P.M., San Juan County, New Mexico.



United States Geological Survey
P. O. Box 959
Farmington, New Mexico 87401

Gentlemen:

Supron Energy Corporation proposes to drill the Summit Viles No. 5, to be located 1720 feet from the North line and 1790 feet from the East line, Section 33, Township 29 North, Range 11 West, N.M.P.M., San Juan County, New Mexico.

The following attachments are included with this application:

1. Topographical map showing proposed location.
2. No access road is needed.
3. Map showing existing producing facilities.
4. Location of surface equipment if required.
5. Drilling and completion water will be obtained from the San Juan River.
6. All pits will be fenced and constructed in such a way as to prevent litter on the location.
7. We will dispose of all waste by placing it in the reserve pit and burying it when the well is completed.
8. There will be no camp at or near the well site.
9. There will be no air strip.
10. A plat is attached showing the location of the rig, mud tanks, reserve pit, burn pit, etc.
11. A letter of certification is attached. The operator representative for compliance purposes is Rudy D. Motto, Area Superintendent, P.O. Box 808, Farmington, New Mexico 87401. Phone (505) 325-3587.
12. After the well is completed, the location will be cleaned up, and bladed. The reserve pit will be allowed to dry and then filled and restored to its natural state.
13. The soil is sandy loam with principal vegetation being Sagebrush, Pinon and Juniper.