

UNITED STATES
DEPARTMENT OF THE INTERIOR
GEOLOGICAL SURVEY

APPLICATION FOR PERMIT TO DRILL, DEEPEN, OR PLUG BACK

1a. TYPE OF WORK

DRILL ☒DEEPEN ☐PLUG BACK ☐

b. TYPE OF WELL

OIL
WELL ☐GAS
WELL ☒

OTHER

SINGLE
ZONE ☒MULTIPLE
ZONE ☐

2. NAME OF OPERATOR

Supron Energy Corporation

3. ADDRESS OF OPERATOR

P. O. Box 808, Farmington, New Mexico 87401

4. LOCATION OF WELL (Report location clearly and in accordance with any State requirements.)*

At surface

K 1540 ft./South line & 1690 ft./West line.

At proposed prod. zone Same as above.

14. DISTANCE IN MILES AND DIRECTION FROM NEAREST TOWN OR POST OFFICE*

2 miles South of Bloomfield, New Mexico

15. DISTANCE FROM PROPOSED*

LOCATION TO NEAREST
PROPERTY OR LEASE LINE, FT.
(Also to nearest drlg. unit line, if any)

1540

1540

18. DISTANCE FROM PROPOSED LOCATION*

TO NEAREST WELL, DRILLING, COMPLETED,
OR APPLIED FOR, ON THIS LEASE, FT.

163

16. NO. OF ACRES IN LEASE

600.69

19. PROPOSED DEPTH

1650

17. NO. OF ACRES ASSIGNED
TO THIS WELL

159.11

20. ROTARY OR CABLE TOOLS

Rotary

21. ELEVATIONS (Show whether DF, RT, GR, etc.)

5642 Gr.

October 1, 1979

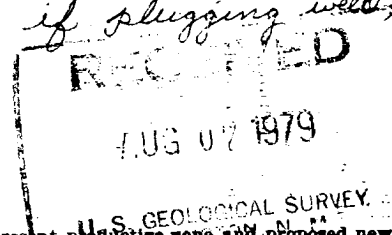
23. PROPOSED CASING AND CEMENTING PROGRAM

SIZE OF HOLE	SIZE OF CASING	WEIGHT PER FOOT	SETTING DEPTH	QUANTITY OF CEMENT
9-7/8"	7-5/8" (New)	20.00 (H-40)	200 *	125 sx. class "B" w/2% CaCl.
6-3/4"	2-7/8" (New)	6.50 (J-55)	1650	200 sx. class "B" w/1/4# Flakes

We propose to drill this well through the Fruitland zone to about 1650 ft. with mud. 2-7/8", 6.50#, EUE, J-55 tubing will be set at 1650 ft. It will be cemented with about 200 sx of class "B" with 1/4# of Cello-Flake per sack. The well will be perforated and stimulated in the Fruitland zone.

The well will be drilled on acreage dedicated to a gas transporter.

*May set 90' surface casing & cement up through Ojo Alamo when setting production casing and verify cement top by log or if plugging well, set plug across Ojo Alamo.



IN ABOVE SPACE DESCRIBE PROPOSED PROGRAM: If proposal is to deepen or plug back, give data on present productive zone and proposed new productive zone. If proposal is to drill or deepen directionally, give pertinent data on subsurface locations and measured and true vertical depths. Give blowout preventer program, if any.

24.

SIGNED

Kenneth E. Roddy

TITLE Production Supt.

DATE August 2, 1979

(This space for Federal or State office use)

PERMIT NO.

APPROVAL DATE

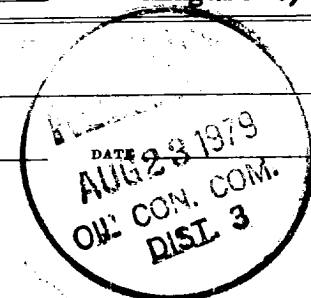
APPROVED BY

TITLE

CONDITIONS OF APPROVAL, IF ANY:

ok Frank

nmcc



**NEW MEXICO OIL CONSERVATION COMMISSION
WELL LOCATION AND ACREAGE DEDICATION PLAT**

Form C-102
Supersedes C-128
Effective 1-4-65

All distances must be from the outer boundaries of the Section.

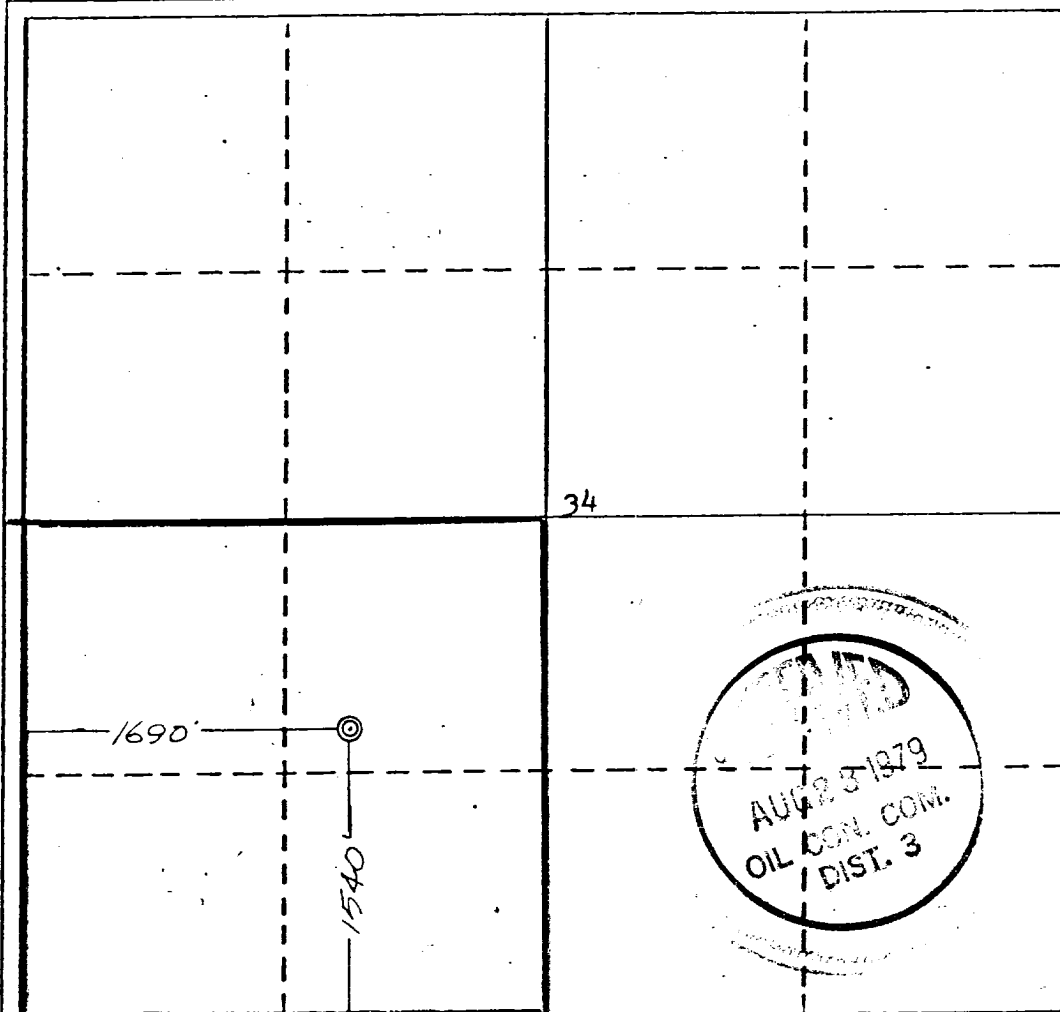
Operator SUPRON ENERGY CORPORATION			Lease SUMMIT		Well No. 8
Unit Letter K	Section 34	Township 29 NORTH	Range 11 WEST	County SAN JUAN	
Actual Footage Location of Well: 1540 feet from the SOUTH line and 1690 feet from the WEST line					
Ground Level Elev. 5642	Producing Formation Fruitland		Pool Aztec Extension	Dedicated Acreage: SW 1/4 159.11 Acres	

- Outline the acreage dedicated to the subject well by colored pencil or hatchure marks on the plat below.
- If more than one lease is dedicated to the well, outline each and identify the ownership thereof (both as to working interest and royalty).
- If more than one lease of different ownership is dedicated to the well, have the interests of all owners been consolidated by communitization, unitization, force-pooling, etc?

☐ Yes ☐ No If answer is "yes," type of consolidation _____

If answer is "no," list the owners and tract descriptions which have actually been consolidated. (Use reverse side of this form if necessary.) _____

No allowable will be assigned to the well until all interests have been consolidated (by communitization, unitization, forced-pooling, or otherwise) or until a non-standard unit, eliminating such interests, has been approved by the Commission.



CERTIFICATION

I hereby certify that the information contained herein is true and complete to the best of my knowledge and belief.

Rudy D. Motto

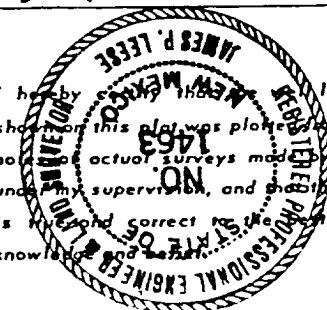
Name
Rudy D. Motto

Position
Area Superintendent

Company
Supron Energy Corporation

Date
July 13, 1979

I hereby certify that the location shown on this plat was plotted in the field and that actual surveys made by me or under my supervision, and that the same is true and correct to the best of my knowledge and belief.

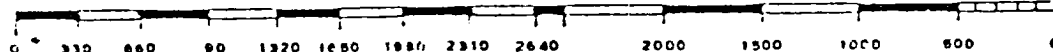


Date Surveyed
11 July 1979

Registered Professional Engineer and/or Land Surveyor

James P. Leese
James P. Leese

Certificate No.
1463

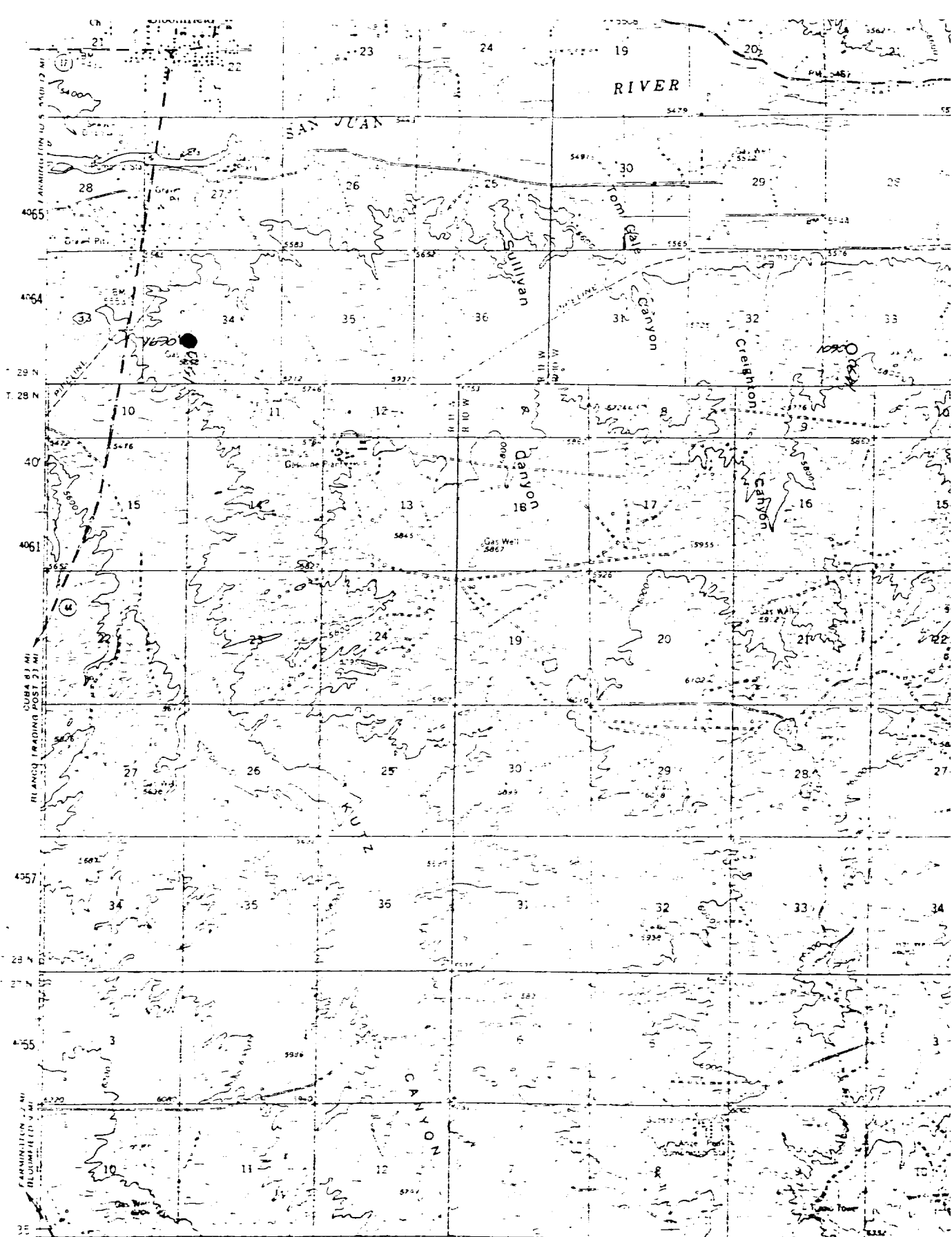


SUMMIT NO. 8

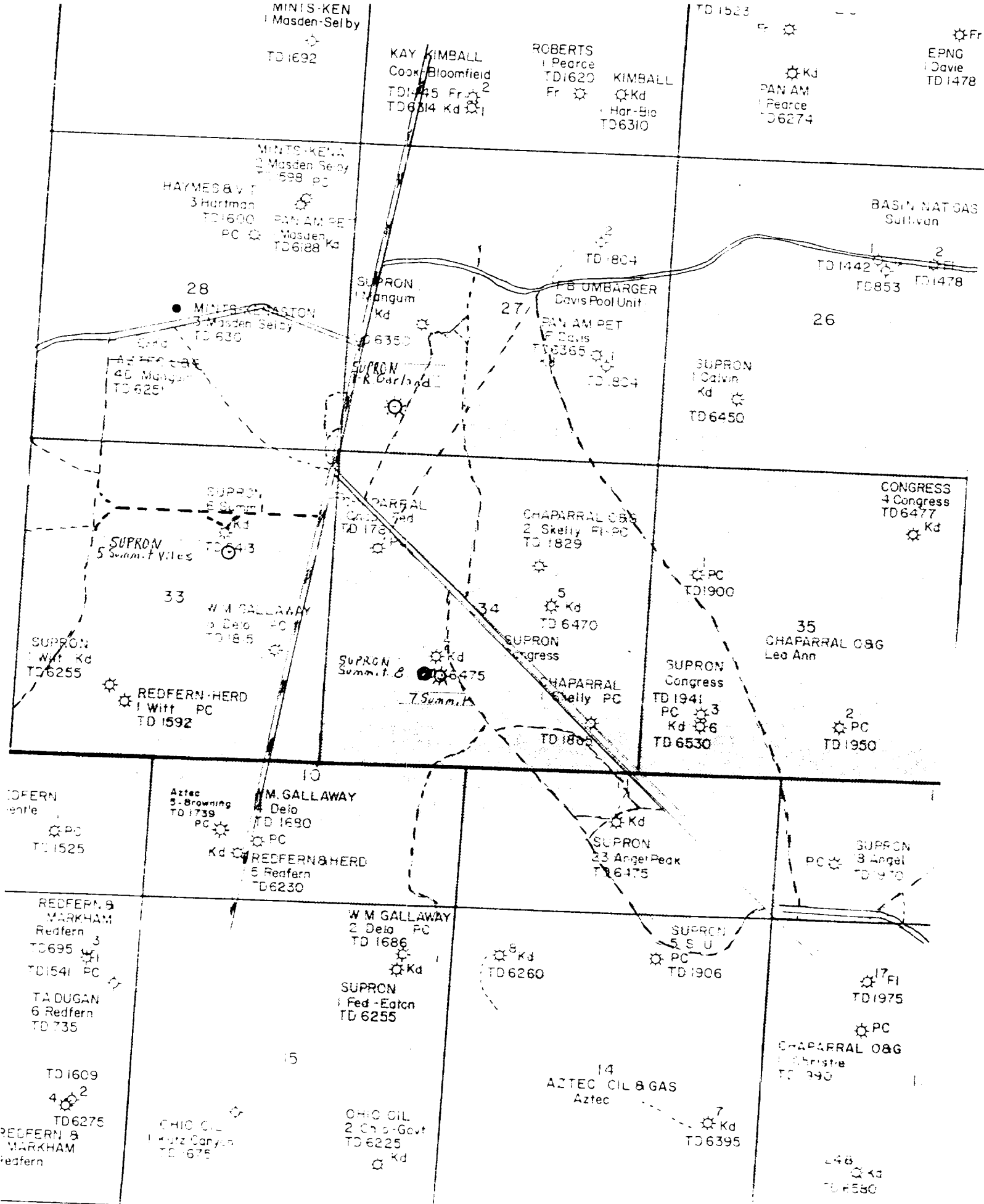
Unit K, Sec. 34, T-29N, R-11W
San Juan County, New Mexico

SUPPLEMENT TO FORM 9-331C

1. The Geologic name of the surface formation is "Wasatch".
2. The estimated tops of important Geologic markers are:
 - A. Base of Ojo Alamo 1190
 - B. Top of Fruitland 1440
3. The estimated depth at which anticipated water, oil, or other mineral bearing formations are expected to be encountered are:
 - A. Base of Ojo Alamo 1190 - Water
 - B. Top of Fruitland 1440 - Gas
4. The casing program is shown on Form 9-331C and all casing is new.
5. The lessee's pressure - control equipment schematics are attached, along with minimum specifications, testing procedures and frequencies.
6. The type, estimated volumes, and characteristics of the circulating media are as follows:
 - A. 0 - 200 ft. - Natural mud.
 - B. 200 - 1650 ft. - Permaloid non-dispersed mud containing 167 sx gel, 67 sx. permaloid, and 10 sx C.M.C.
7. The auxiliary equipment to be used will be floats at the bit and a sub on the floor with a full-opening valve to be stabbed into the drill pipe when the kelly is not in the string.
8. This well is in an area which is partially developed; therefore we will not have a testing and coring program. The logging program will be as follows:
 - A. E.S. Induction.
 - B. Gamma Ray Density.
 - C. Gamma Ray Correlation.
 - D. Cement Bond Log.
9. We do not expect to find any abnormal pressures, temperatures or hydrogen sulphide problems in this partially - developed area.
10. The anticipated starting date for this well is October 1, 1979.



Supron Energy Corporation
 SUMMIT #8
 NE $\frac{1}{4}$ SW $\frac{1}{4}$ Sec. 34, T29N, R11W,
 N.M.P.M., San Juan County, NM
 1540 F/SL - 1690 F/WL
 Elevation - 5642



MINIS-KEN
1 Masden-Selby

TD 1692

KAY KIMBALL
Cook Bloomfield
TD 1645 Fr
TD 6314 Kd

ROBERTS
1 Pearce
TD 1620 Fr
KIMBALL
Kd
Har-Bio
TD 6310

PAN AM
1 Pearce
TD 6274

EPNG
1 Davie
TD 1478

MINIS-KEN
2 Masden-Selby
TD 598 PC
HAYMES & V
3 Hartman
TD 1600
PAN AM PET
PC
Masden Kd
TD 6188

BASIN NAT GAS
Sullivan

28
MINIS-KEN
3 Masden-Selby
TD 630

SUPRON
1 Mangum
Kd

TD 804
FB UMBARGER
Davis Pool Unit

TD 1442
TD 853
TD 1478

26

45 Mangum
TD 625

SUPRON
1 R. Garland

PAN AM PET
F Davis
TD 6365

SUPRON
1 Calvin
Kd
TD 6450

SUPRON
5 Summit
V. Les
TD 643

CHAPARRAL
2 Skelly
TD 178

CHAPARRAL O&G
2 Skelly FI-PC
TD 1829

CONGRESS
4 Congress
TD 6477
Kd

33
W.M. GALLAWAY
2 Delo
TD 1685

SUPRON
1 Witt Kd
TD 6255

REDFERN-HERD
1 Witt PC
TD 1592

SUPRON
Summit
TD 6475

34
Kd
TD 6470

SUPRON
Congress

CHAPARRAL
Skelly PC
TD 1855

PC
TD 1900

35
CHAPARRAL O&G
Leo Ann

SUPRON
Congress
TD 1941
PC
Kd
TD 6530

2
PC
TD 1950

REDFERN
1 Witt
TD 1525

10
W.M. GALLAWAY
4 Delo
TD 1690
PC
REDFERN-HERD
5 Redfern
TD 6230

SUPRON
23 Angel Peak
TD 6475

SUPRON
18 Angel
TD 1910

REDFERN-9
MARKHAM
Redfern
3
TD 695
TD 1541 PC
TADUGAN
6 Redfern
TD 735

W.M. GALLAWAY
2 Delo PC
TD 1686

SUPRON
1 Fed-Eaton
TD 6255

8 Kd
TD 6260

SUPRON
5 S.U.
PC
TD 1906

17 FI
TD 1975

TD 1609
4
TD 6275

OHIO OIL
1 Katz Canyon
TD 1675

OHIO OIL
2 Chas-Govt
TD 6225
Kd

14
AZTEC OIL & GAS
Aztec

7 Kd
TD 6395

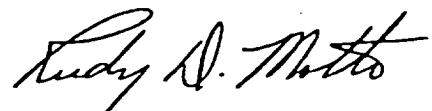
PC
CHAPARRAL O&G
1 Christie
TD 1990

448
Kd
TD 6580

SUPRON ENERGY CORPORATION
POST OFFICE BOX 808
FARMINGTON, NEW MEXICO 87401

I hereby certify that I, or persons under my direct supervision, have inspected the proposed drillsite and access route; that I am familiar with the conditions which presently exist; that the statements made in this plan are, to the best of my knowledge, true and correct; and, that the work associated with the operations proposed herein will be performed by SUPRON ENERGY CORPORATION and its contractors subcontractors in conformity with this plan and the terms and conditions under which it is approved.

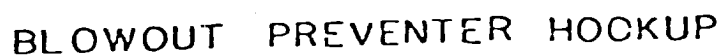
SUPRON ENERGY CORPORATION

A handwritten signature in cursive script, reading "Rudy D. Motto".

Rudy D. Motto
Area Superintendent
Phone: 325-3587

The B.O.P. and all valve and fittings are rated at 3000 psi working pressure, and hydraulically operated

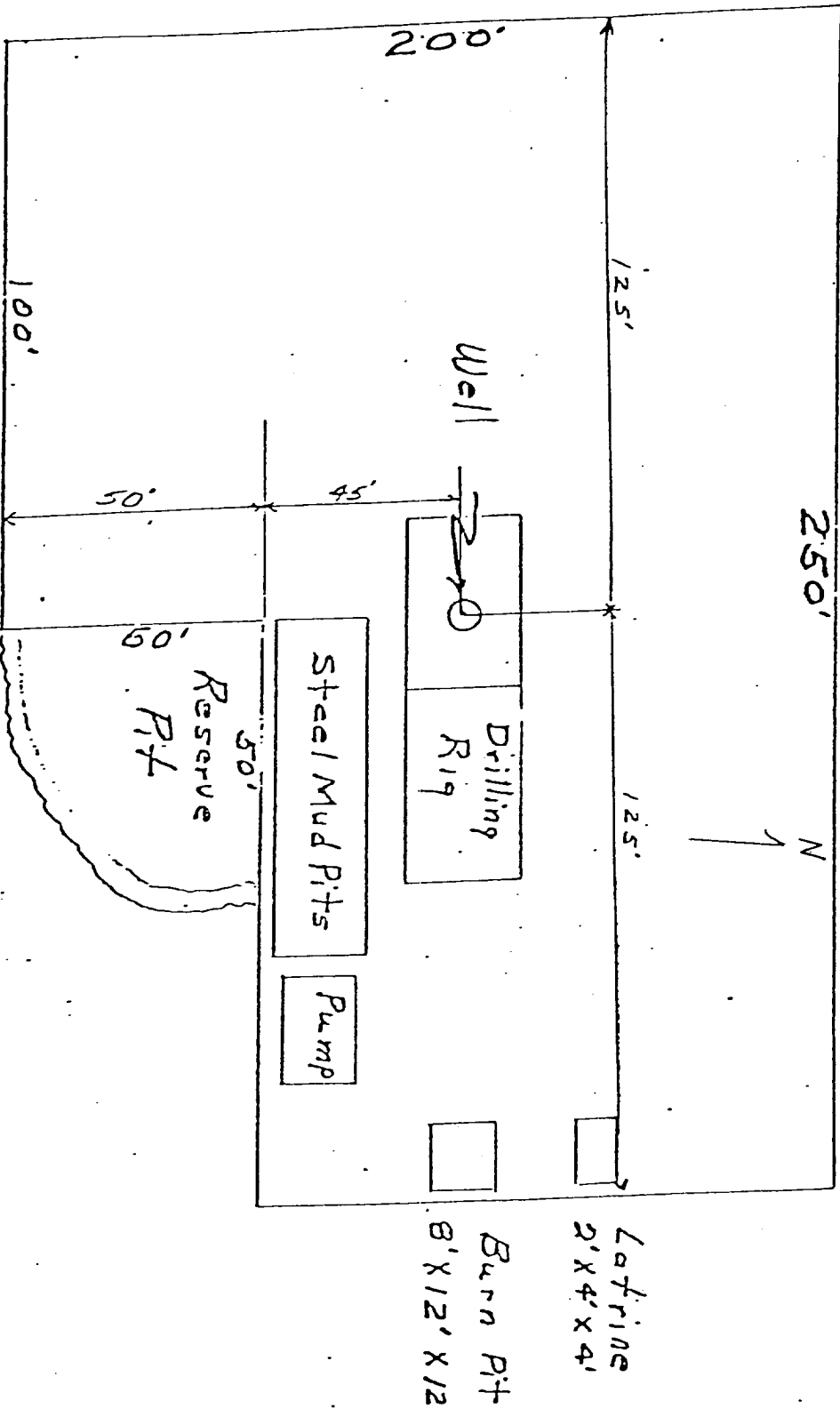
The B.O.P. and all valve and fittings are rated at 3000 psi working pressure, and hydraulically operated



SUPRON ENERGY CORPORATION
LOCATION AND EQUIPMENT LAYOUT

SUMMIT NO. 8

1540 Feet from the South line and 1690 feet from the West line of Section 34, Township 29 North, Range 11 West, N.M.P.M., San Juan County, New Mexico.



United States Geological Survey
P. O. Box 959
Farmington, New Mexico 87401

Gentlemen:

Supron Energy Corporation proposes to drill the Summit No. 8, to be located 1540 feet from the South line and 1690 feet from the West line of Section 34, Township 29 North, Range 11 West, San Juan County, New Mexico.

The following attachments are included with this application:

1. Topographical map showing proposed location.
2. No access road is needed.
3. Map showing existing producing facilities.
4. Location of surface equipment if required.
5. Drilling and completion water will be obtained from the San Juan River.
6. All pits will be fenced and constructed in such a way as to prevent litter on the location.
7. We will dispose of all waste by placing it in the reserve pit and burying it when the well is completed.
8. There will be no camp at or near the well site.
9. There will be no air strip.
10. A plat is attached showing the location of the rig, mud tanks, reserve pit, burn pit, etc.
11. A letter of certification is attached. The operator representative for compliance purposes is Rudy D. Motto, Area Superintendent, P. O. Box 808, Farmington, New Mexico 87401. Phone (505) 325-3587.
12. After the well is completed, the location will be cleaned up and bladed. The reserve pit will be allowed to dry and then filled and restored to its natural state.
13. The soil is sandy loam with principal vegetation being Sagebrush, Pinon and Juniper.