

UNITED STATES
DEPARTMENT OF THE INTERIOR
GEOLOGICAL SURVEY

APPLICATION FOR PERMIT TO DRILL, DEEPEN, OR PLUG BACK

1a. TYPE OF WORK

DRILL ☒DEEPEN ☐PLUG BACK ☐

b. TYPE OF WELL

OIL
WELL ☐GAS
WELL ☒

OTHER

SINGLE
ZONE ☐MULTIPLE
ZONE ☐

2. NAME OF OPERATOR

SUPRON ENERGY CORPORATION

3. ADDRESS OF OPERATOR

P.O. Box 808, Farmington, New Mexico 87401

4. LOCATION OF WELL (Report location clearly and in accordance with any State requirements.)*

At surface

1187 feet from the North; 1707 feet from the West line

At proposed prod. zone

Same as above.

14. DISTANCE IN MILES AND DIRECTION FROM NEAREST TOWN OR POST OFFICE*

5 miles South of Blanco, New Mexico

15. DISTANCE FROM PROPOSED*

LOCATION TO NEAREST

PROPERTY OR LEASE LINE, FT.

(Also to nearest drlg. unit line, if any)

1187

18. DISTANCE FROM PROPOSED LOCATION*

TO NEAREST WELL, DRILLING, COMPLETED,
OR APPLIED FOR, ON THIS LEASE, FT.

112

16. NO. OF ACRES IN LEASE

320

19. PROPOSED DEPTH

1650

17. NO. OF ACRES ASSIGNED
TO THIS WELL

160

20. ROTARY OR CABLE TOOLS

Rotary

21. ELEVATIONS (Show whether DF, RT, GR, etc.)

5783 GR.

22. APPROX. DATE WORK WILL START*

11-1-79

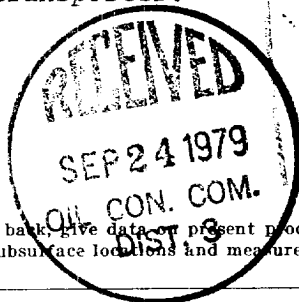
23.

PROPOSED CASING AND CEMENTING PROGRAM

SIZE OF HOLE	SIZE OF CASING	WEIGHT PER FOOT	SETTING DEPTH	QUANTITY OF CEMENT
9-7/8"	7-5/8" (New)	26.40	150	100 sx class "B", 2% CaCl
603/4"	2-7/8" (New)	6.50	1650	200 sx class "B", 2% CaCl, 1/4# Flake

We propose to drill a 9-7/8" surface hole to about 150 ft. and set 7-5/8", 26.40#, K-55 casing to T.D. and cemented to surface. A 6-3/4" hole will be drilled with mud to a T.D. of 1650 ft. 2-7/8", 6.50#, E.U.E. tubing will be run as production casing. It will be cemented with about 200 sacks of class "B" with 2% CaCl and 1/4# flakes per sack. The well will be perforated and stimulated in the Farmington sand. No tubing will be run inside the 2-7/8"

The well is on acreage dedicated to a gas transporter.



SEP 13 1979

U. S. GEOLOGICAL SURVEY
FARMINGTON, N. M.

IN ABOVE SPACE DESCRIBE PROPOSED PROGRAM: If proposal is to deepen or plug back, give data on present productive zone and proposed new productive zone. If proposal is to drill or deepen directionally, give pertinent data on subsurface locations and measured and true vertical depths. Give blowout preventer program, if any.

24.

SIGNED

Kenneth E. Roddy

TITLE

Production Superintendent

DATE

September 12, 1979

(This space for Federal or State office use)

PERMIT NO.

APPROVAL DATE

APPROVED BY

TITLE

DATE

CONDITIONS OF APPROVAL, IF ANY:

of Frank Nymocc

NEW MEXICO OIL CONSERVATION COMMISSION
WELL LOCATION AND ACREAGE DEDICATION PLAT

Form C-102
Supersedes C-128
Effective 1-1-65

All distances must be from the outer boundaries of the Section.

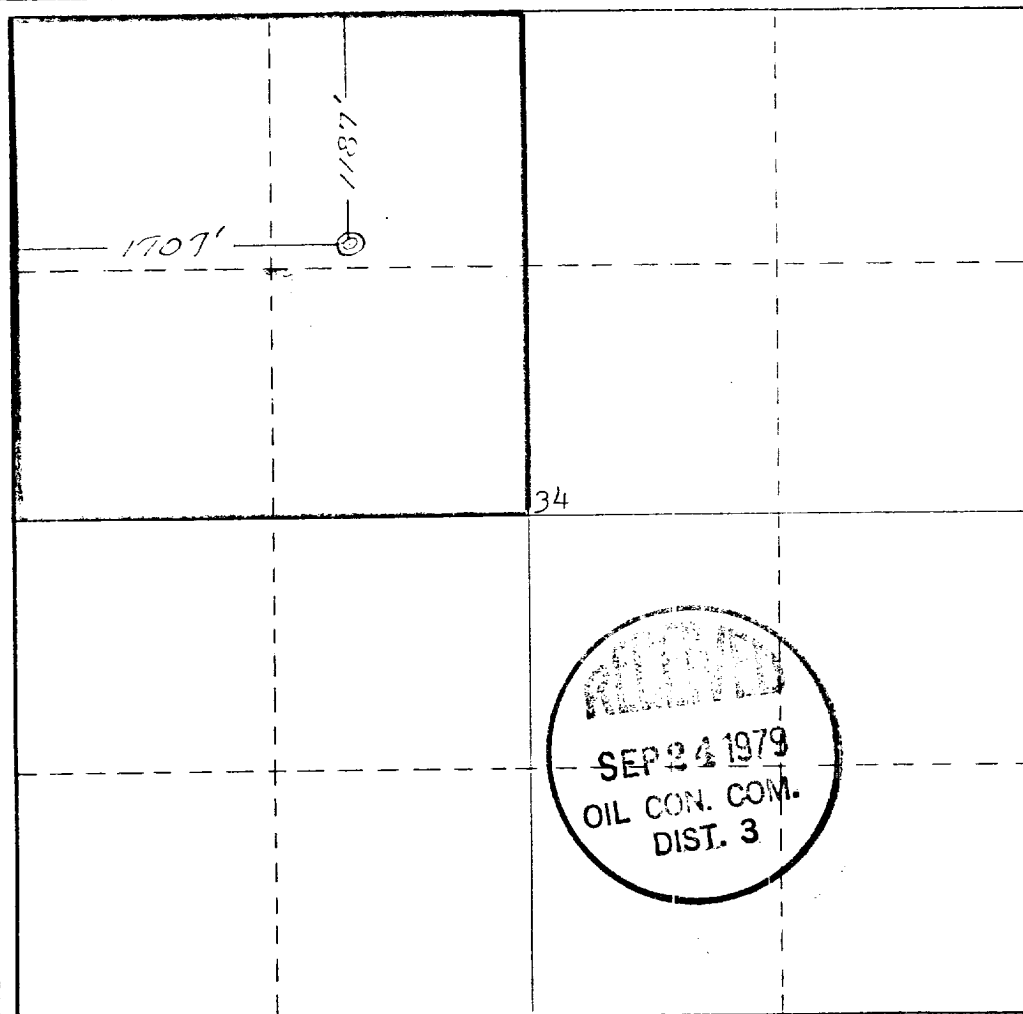
Operator SUPRON ENERGY CORPORATION			Lease LARGO FEDERAL		Well No. 3
Unit Letter C	Section 34	Township 29 NORTH	Range 9 WEST	County SAN JUAN	
Actual Footage Location of Well: 1187 feet from the NORTH line and 1707 feet from the WEST line					
Ground Level Elev. 5783	Producing Formation Sand Farmington		Pool Wildcat Farmington	Dedicated Acreage: 160 Acres	

1. Outline the acreage dedicated to the subject well by colored pencil or hachure marks on the plat below.
2. If more than one lease is dedicated to the well, outline each and identify the ownership thereof (both as to working interest and royalty).
3. If more than one lease of different ownership is dedicated to the well, have the interests of all owners been consolidated by communitization, unitization, force-pooling, etc?

☐ Yes ☐ No If answer is "yes," type of consolidation _____

If answer is "no," list the owners and tract descriptions which have actually been consolidated. (Use reverse side of this form if necessary.) _____

No allowable will be assigned to the well until all interests have been consolidated (by communitization, unitization, forced-pooling, or otherwise) or until a non-standard unit, eliminating such interests, has been approved by the Commission.



CERTIFICATION

I hereby certify that the information contained herein is true and complete to the best of my knowledge and belief.

Kenneth E. Roddy

Name

Kenneth E. Roddy

Position

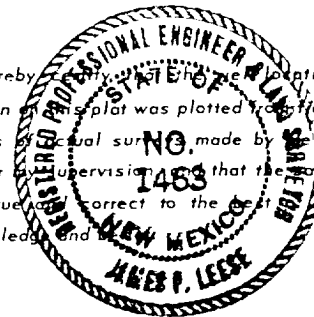
SUPRON ENERGY CORPORATION

Company

September 12, 1979

Date

I hereby certify that the location shown on this plat was plotted from field notes of actual survey made by me or under my supervision and that the same is true and correct to the best of my knowledge and belief.



Date Surveyed

August 22, 1979

Registered Professional Engineer

and/or Land Surveyor

James P. Leese

James P. Leese

Certificate No.

1463

0 330 660 990 1320 1650 1980 2310 2640 2000 1500 1000 500 0

SUPRON ENERGY CORPORATION
Largo Federal No. 3
1187 ft./N; 1707 ft./W line
Sec. 34, T-29N, R-9W
San Juan County, New Mexico

The following attachments are included with this application:

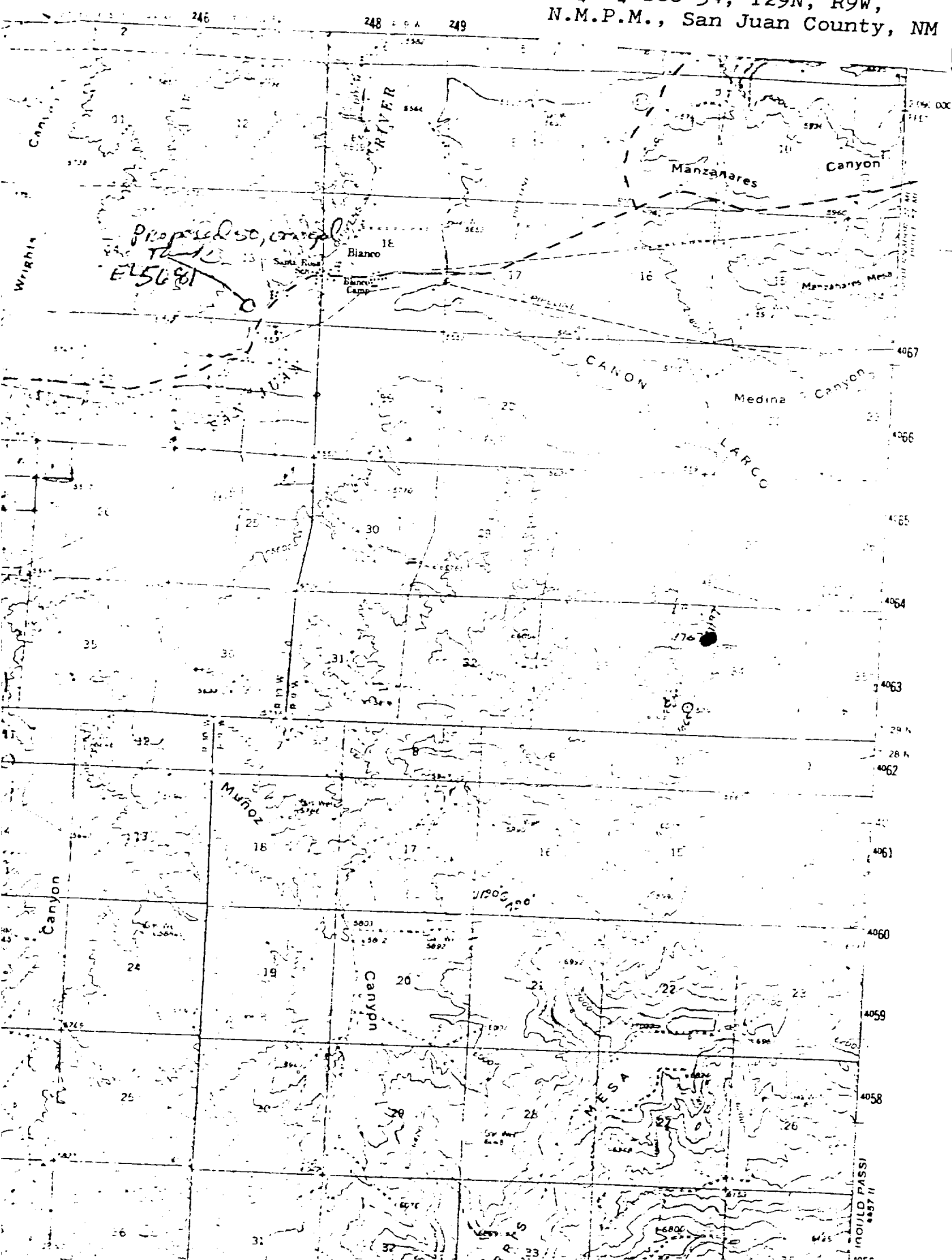
- 1. Topographical map showing proposed location.*
- 2. No new access road will be needed.*
- 3. Map showing existing producing facilities.*
- 4. Location of surface equipment if required.*
- 5. Drilling and completion water will be obtained from the San Juan River.*
- 6. All pits will be fenced and constructed in such a way as to prevent litter on the location.*
- 7. We will dispose of all waste by placing it in the reserve pit and burying it when the well is completed.*
- 8. There will be no camp at or near the well site.*
- 9. There will be no air strip.*
- 10. A plat is attached showing the location of the rig, mud tanks, reserve pit, burn pit, etc.*
- 11. A letter of certification is attached. The operator representative for compliance purposes is Rudy D. Motto, Area Superintendent, P.O. Box 808, Farmington, New Mexico 87401. Phone (505) 325-3587.*
- 12. After the well is completed, the location will be cleaned up, and bladed. The reserve pit will be allowed to dry and then filled and restored to its natural state.*
- 13. The soil is sandy loam with principal vegetation being sage brush.*

SUPRON ENERGY CORPORATION
Largo Federal No. 3
1187 ft./N; 1707 ft./W line
Sec. 34, T-29N, R-9W
San Juan County, New Mexico

SUPPLEMENT TC FORM 9-331C

1. The Geologic name of the surface formation is "Wasatch".
2. The estimated tops of important Geologic markers are:
 - A. Base of Ojo Alamo - 1230
 - B. Top of Farmington Sand - 1525
3. The estimated depth at which anticipated water, oil, or other mineral bearing formations are expected to be encountered are:
 - A. Base of Ojo Alamo - 1230 - Water
 - B. Top of Farmington Sand - 1525 - Gas
4. The casing program is shown on form 9-331C and all casing is new.
5. The lessee's pressure - control equipment schematics are attached, along with minimum specifications, testing procedures, and frequencies.
6. The type, estimated volumes, and characteristics of the circulating media are as follows:
 - A. 0 - 150 - Natural Mud.
 - B. 150 - 1650 - Permaloid, non-dispersed mud containing 167 sacks permaloid, 67 sacks gel, and 10 sacks C.M.C.
7. The auxiliary equipment to be used will be floats at the bit and a sub on the floor with a full-opening valve to be stabbed into the drill pipe when the kelly is not in the string.
8. This well is in an area which is partially developed; therefore we will not have a testing and coring program. The logging program will be as follows:
 - A. E.S. Induction
 - B. Gamma Ray Density
 - C. Gamma Ray Correlation
 - D. Cement Bond Log
9. We do not expect to find any abnormal pressures, temperatures or hydrogen sulphide problems in this partially-developed area.
10. The anticipated starting date for this well is 11-1-79.

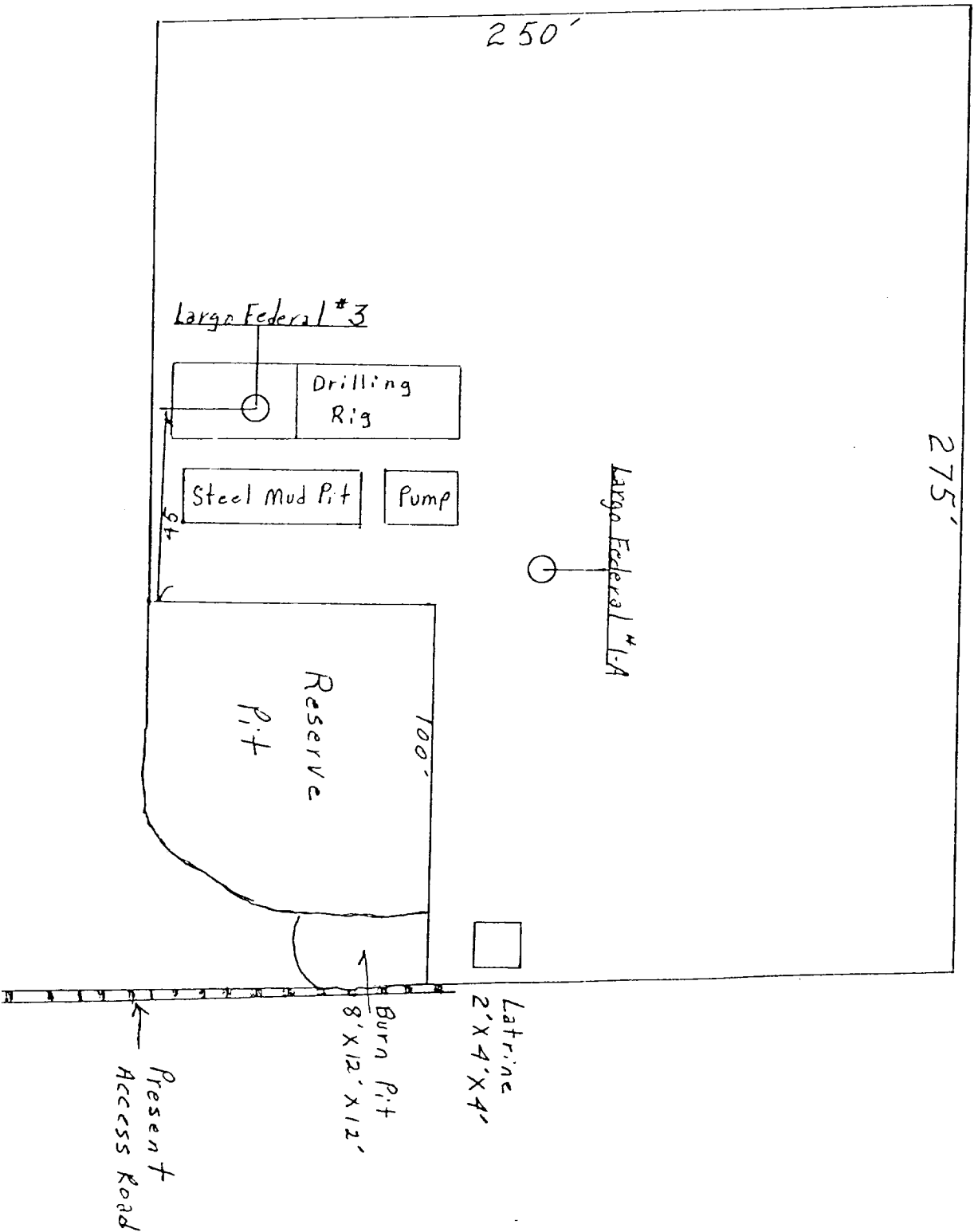
4571
CAJO DAM

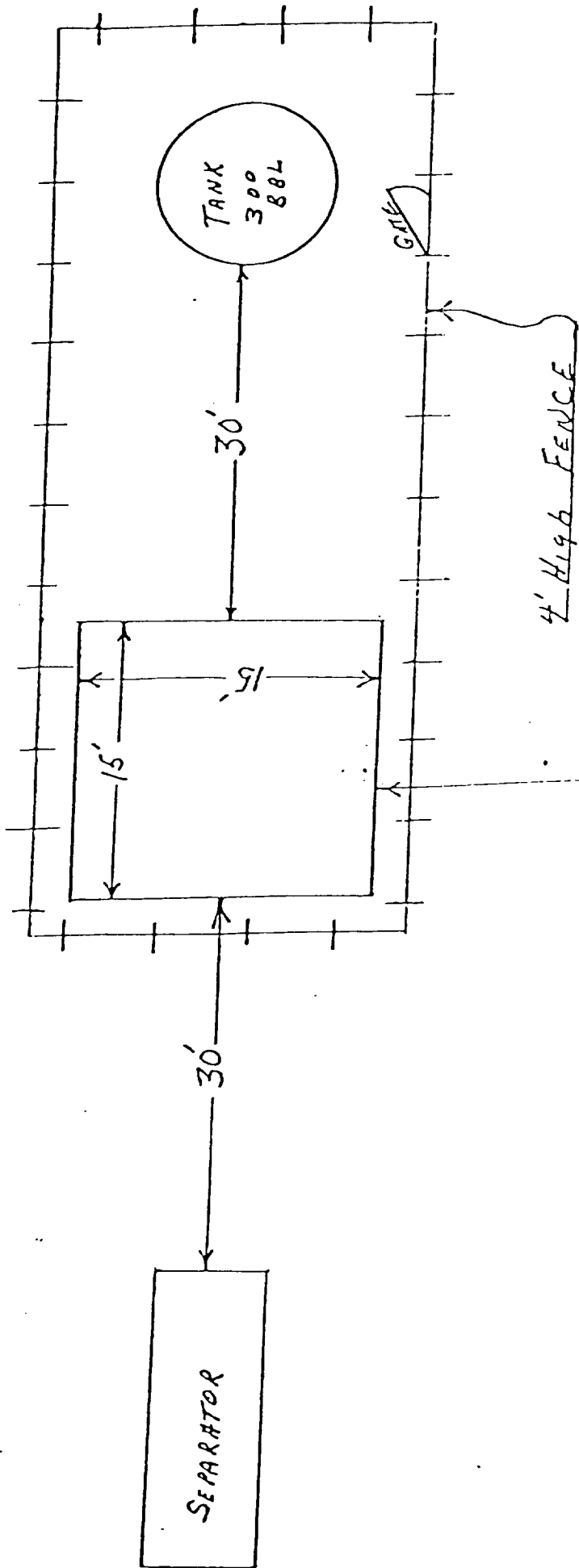


SUPRON ENERGY CORPORATION
LOCATION AND EQUIPMENT LAYOUT

LARGO FEDERAL NO. 3

1187 Feet from the North line and 1707 feet from the West line of
Section 34, Township 29 North, Range 9 West, N.M.P.M., San Juan
County, New Mexico.



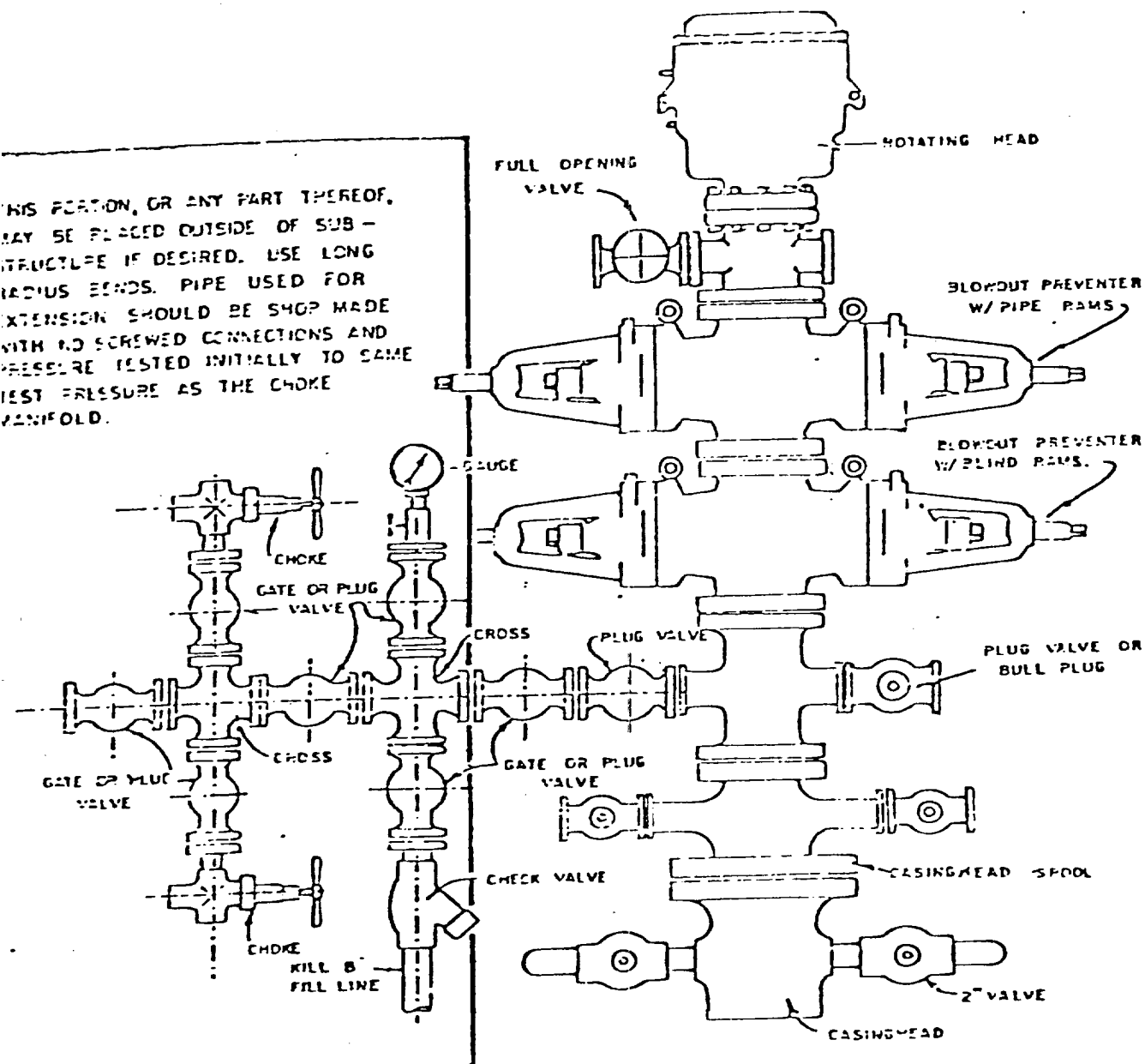


70'

WELL HEAD

Blowout Preventer will be tested daily and prior to drilling out with the results to be logged on the drillers report.

The B.O.P. and all valve and fittings are rated at 3000 psi working pressure, and hydraulically operated



BLOWOUT PREVENTER HOOKUP

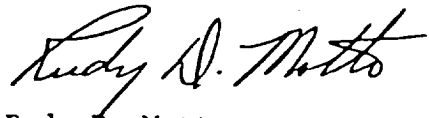
SUPRON ENERGY CORPORATION

Post Office Box 808

FARMINGTON, NEW MEXICO 87401

I hereby certify that I, or persons under my direct supervision, have inspected the proposed drillsite and access route; that I am familiar with the conditions which presently exist; that the statements made in this plan are, to the best of my knowledge, true and correct; and, that the work associated with the operations proposed herein will be performed by SUPRON ENERGY CORPORATION and its contractors subcontractors in conformity with this plan and the terms and conditions under which it is approved.

SUPRON ENERGY CORPORATION

A handwritten signature in cursive script, reading "Rudy D. Motto".

Rudy D. Motto
Area Superintendent
Phone: 325-3587