

NO. OF COPIES RECEIVED	5
DISTRIBUTION	
SANTA FE	1
FILE	2
U.S.G.S.	1
LAND OFFICE	
OPERATOR	

NEW MEXICO OIL CONSERVATION COMMISSION

38-E45-23856
Form C-101
Revised 1-1-65

5A. Indicate Type of Lease	
STATE <input type="checkbox"/>	FEE <input checked="" type="checkbox"/>
5. State Oil & Gas Lease No.	

APPLICATION FOR PERMIT TO DRILL, DEEPEN, OR PLUG BACK

1a. Type of Work		7. Unit Agreement Name	
b. Type of Well OIL WELL <input type="checkbox"/> GAS WELL <input checked="" type="checkbox"/> OTHER <input type="checkbox"/>		8. Farm or Lease Name	
DRILL <input checked="" type="checkbox"/> DEEPEN <input type="checkbox"/> PLUG BACK <input type="checkbox"/>		Armenta Gas ComC	
2. Name of Operator		9. Well No.	
AMOCO PRODUCTION COMPANY		IE	
3. Address of Operator		10. Field and Pool, or Wildcat	
501 Airport Drive, Farmington, New Mexico 87401		Basin Dakota	
4. Location of Well		12. County	
UNIT LETTER C LOCATED 435' FEET FROM THE North LINE		San Juan	
AND 1590' FEET FROM THE West LINE OF SEC. 27 TWP. 29N RGE. 10W NMPM			
19. Proposed Depth		19A. Formation	
6188'		Dakota	
20. Rotary or C.T.		Rotary	
21. Elevations (Show whether DF, RT, etc.)		22. Approx. Date Work will start	
5506' GL		11/1/79	
21A. Kind & Status Plug. Bond		21B. Drilling Contractor	
Statewide		Unknown	

23.

PROPOSED CASING AND CEMENT PROGRAM

SIZE OF HOLE	SIZE OF CASING	WEIGHT PER FOOT	SETTING DEPTH	SACKS OF CEMENT	EST. TOP
12-1/4"	9-5/8"	32.3#	300'	300 sx.	Surface
8-3/4"	7"	20 #	2207'	325 sx. S	Surface
6-1/4"	4-1/2"	10.5#	6188'	415 sx.	2057'

Amoco proposes to drill the above well to further develop the Basin Dakota reservoir. The well will be drilled to the surface casing point using native mud. The well will then be drilled to the intermediate casing point with a low solids nondispersed mud system and to TD with air. Completion design will be based on open hole logs. Copy of all logs will be filed upon completion. Amoco's standard blowout prevention will be employed; see attached drawing for blowout preventer design. Upon completion the well location will be cleaned and the reserve pit filled and leveled.

Gas produced from this well is dedicated to El Paso Natural Gas Co.

An unorthodox location application is in the process of being filed with the Santa Fe office.

APPROVAL VALID
FOR 90 DAYS UNLESS
DRILLING COMMENCED

1-3-80

IN ABOVE SPACE DESCRIBE PROPOSED PROGRAM IF EXPIRES 45 TO DEEPEN OR PLUG BACK, GIVE DATA ON PRESENT PRODUCTIVE ZONE AND PROPOSED NEW PRODUCTIVE ZONE. GIVE BLOWOUT PREVENTER PROGRAM, IF ANY.

I hereby certify that the information above is true and complete to the best of my knowledge and belief.

Signed B. E. Jachul Title District Engineer Date October 2, 1979

(This space for State Use)

APPROVED BY Frank S. Chavez TITLE DEPUTY OIL & GAS INSPECTOR, DIST. #3 DATE 10/5/1979

CONDITIONS OF APPROVAL, IF ANY:

2561 C-101 for NMC

All distances must be from the outer boundaries of the Section.

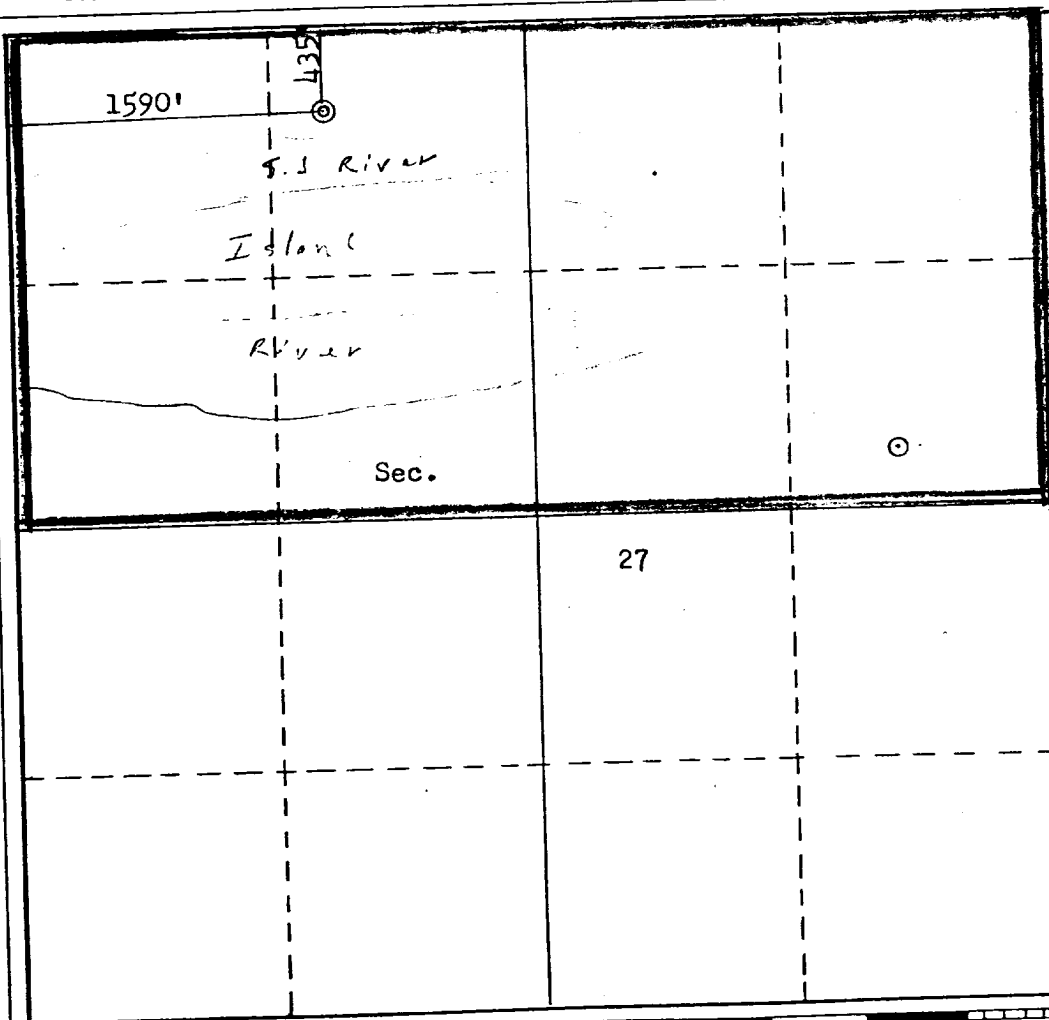
Operator AMOCO PRODUCTION COMPANY			Lease ARMENTA GAS COM "C"		Well No. 1-E
Unit Letter C	Section 27	Township 29N	Range 10W	County San Juan	
Actual Footage Location of Well: 435 feet from the North line and 1590 feet from the West line					
Ground Level Elev. 5506	Producing Formation Dakota	Pool Basin Dakota		Dedicated Acreage: 320 Acres	

1. Outline the acreage dedicated to the subject well by colored pencil or hachure marks on the plat below.
2. If more than one lease is dedicated to the well, outline each and identify the ownership thereof (both as to working interest and royalty).
3. If more than one lease of different ownership is dedicated to the well, have the interests of all owners been consolidated by communitization, unitization, force-pooling, etc?

☒ Yes ☐ No If answer is "yes," type of consolidation Communitization

If answer is "no," list the owners and tract descriptions which have actually been consolidated. (Use reverse side of this form if necessary.)

No allowable will be assigned to the well until all interests have been consolidated (by communitization, unitization, forced-pooling, or otherwise) or until a non-standard unit, eliminating such interests, has been approved by the Commission.



CERTIFICATION

I hereby certify that the information contained herein is true and complete to the best of my knowledge and belief.

B. E. Fackrell

Name

B. E. FACKRELL

Position

DISTRICT ENGINEER

Company

AMOCO PRODUCTION COMPANY

Date

SEPTEMBER 28, 1979

I hereby certify that the well location shown on this plat was plotted from field notes of actual surveys made by me or under my supervision, and that the same is true and correct to the best of my knowledge and belief.

Date Surveyed

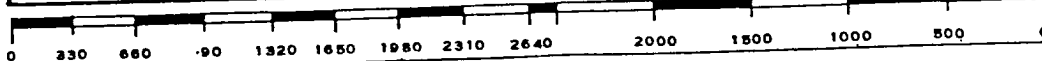
September 14, 1979

Registered Professional Engineer and/or Land Surveyor

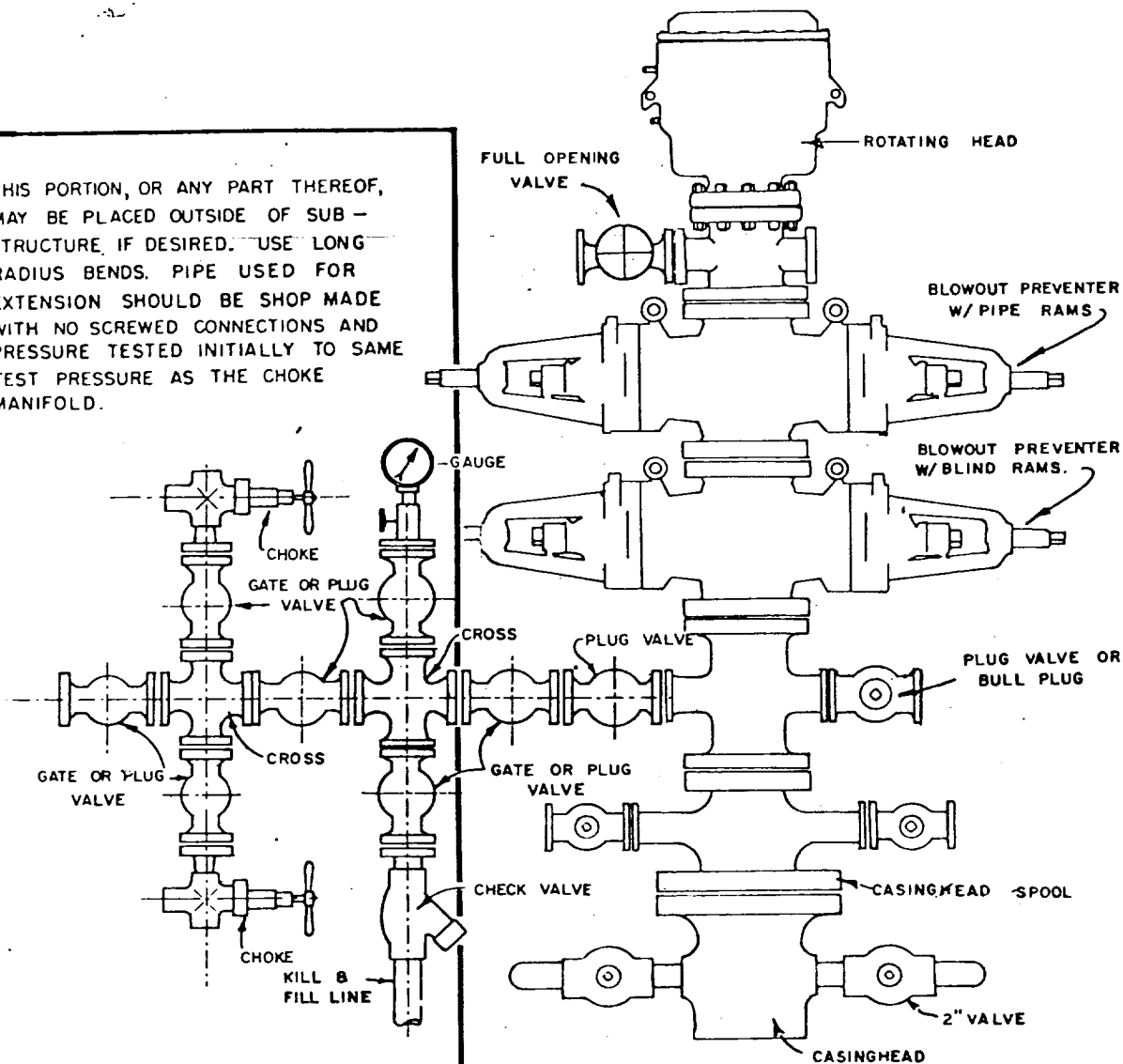
Fred B. Kerr, Jr.

Certificate No.

3950 **F. B. KERR, JR.**



THIS PORTION, OR ANY PART THEREOF, MAY BE PLACED OUTSIDE OF SUB-STRUCTURE IF DESIRED. USE LONG RADIUS BENDS. PIPE USED FOR EXTENSION SHOULD BE SHOP MADE WITH NO SCREWED CONNECTIONS AND PRESSURE TESTED INITIALLY TO SAME TEST PRESSURE AS THE CHOKE MANIFOLD.



BLOWOUT PREVENTER HOOKUP