

NO. OF COPIES RECEIVED	3
DISTRIBUTION	
SANTA FE	1
FILE	
U.S.G.S.	2
LAND OFFICE	
OPERATOR	1

NEW MEXICO OIL CONSERVATION COMMISSION

30-045-23859
Form O-101
Revised 1-1-65

5A. Indicate Type of Lease	
STATE <input type="checkbox"/>	FEED <input checked="" type="checkbox"/>

5. State Oil & Gas Lease No.

APPLICATION FOR PERMIT TO DRILL, DEEPEN, OR PLUG BACK

1a. Type of Work

DRILL ☒

DEEPEN ☐

PLUG BACK ☐

b. Type of Well

OIL WELL ☐

GAS WELL ☒

OTHER

Infill

SINGLE ZONE ☒

MULTIPLE ZONE ☐

2. Name of Operator

AMOCO PRODUCTION COMPANY

3. Address of Operator

501 Airport Drive, Farmington, New Mexico 87401

4. Location of Well

UNIT LETTER G LOCATED 2110' FEET FROM THE North LINE

AND 1560' FEET FROM THE East LINE OF SEC. 14 TWP. 29N RGE. 11W NMPM

7. Unit Agreement Name

8. Farm or Lease Name

Hare Gas Com "D"

9. Well No.

1E

10. Field and Pool, or Wildcat

Basin Dakota

12. County

San Juan

19. Proposed Depth

6459'

19A. Formation

Dakota

20. Rotary or C.T.

Rotary

21. Elevations (Show whether DF, RT, etc.)

5574' GL

21A. Kind & Status Plug. Bond

Statewide

21B. Drilling Contractor

Unknown

22. Approx. Date Work will start

11/17/79

23.

PROPOSED CASING AND CEMENT PROGRAM

SIZE OF HOLE	SIZE OF CASING	WEIGHT PER FOOT	SETTING DEPTH	SACKS OF CEMENT	EST. TOP
12-1/4"	9-5/8"	32.3#	300'	240 sx.	Surface
8-3/4"	7 "	23 #	2200'	385 sx.	Surface
6-1/4"	4-1/2"	10.5#	6459'	775 sx.	Surface

Amoco proposes to drill the above well to further develop the Basin Dakota reservoir. The well will be drilled to the surface casing point using native mud. The well will then be drilled to the intermediate casing point with a low solids nondispersed mud system and to TD with air. Completion design will be based on open hole logs. Copy of all logs will be filed upon completion. Amoco's standard blowout prevention will be employed; see attached drawing for blowout preventer design. Upon completion the well location will be cleaned and the reserve pit filled and leveled.

Gas produced from this well is dedicated to El Paso Natural Gas Company.

An unorthodox location application is in the process of being filed with the Santa Fe Office.

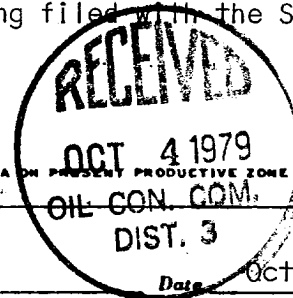
FOR SO DATA
DRILLING CONTRACT

EXPIRES 1-2-80

4 ABOVE SPACE DESCRIBE PROPOSED PROGRAM: IF PROPOSAL IS TO DEEPEN OR PLUG BACK, GIVE DATA ON PRESENT PRODUCTIVE ZONE AND PROPOSED NEW PRODUCTIVE ZONE. GIVE BLOWOUT PREVENTER PROGRAM, IF ANY.

I hereby certify that the information above is true and complete to the best of my knowledge and belief.

Signed B.E. Jauch Title District Engineer



Date October 3, 1979

(This space for State Use)

APPROVED BY Frank S. Carey TITLE DEPUTY COMMISSIONER DATE OCT 4 1979

CONDITIONS OF APPROVAL, IF ANY:

Will C-104 for USL

All distances must be from the outer boundaries of the Section.

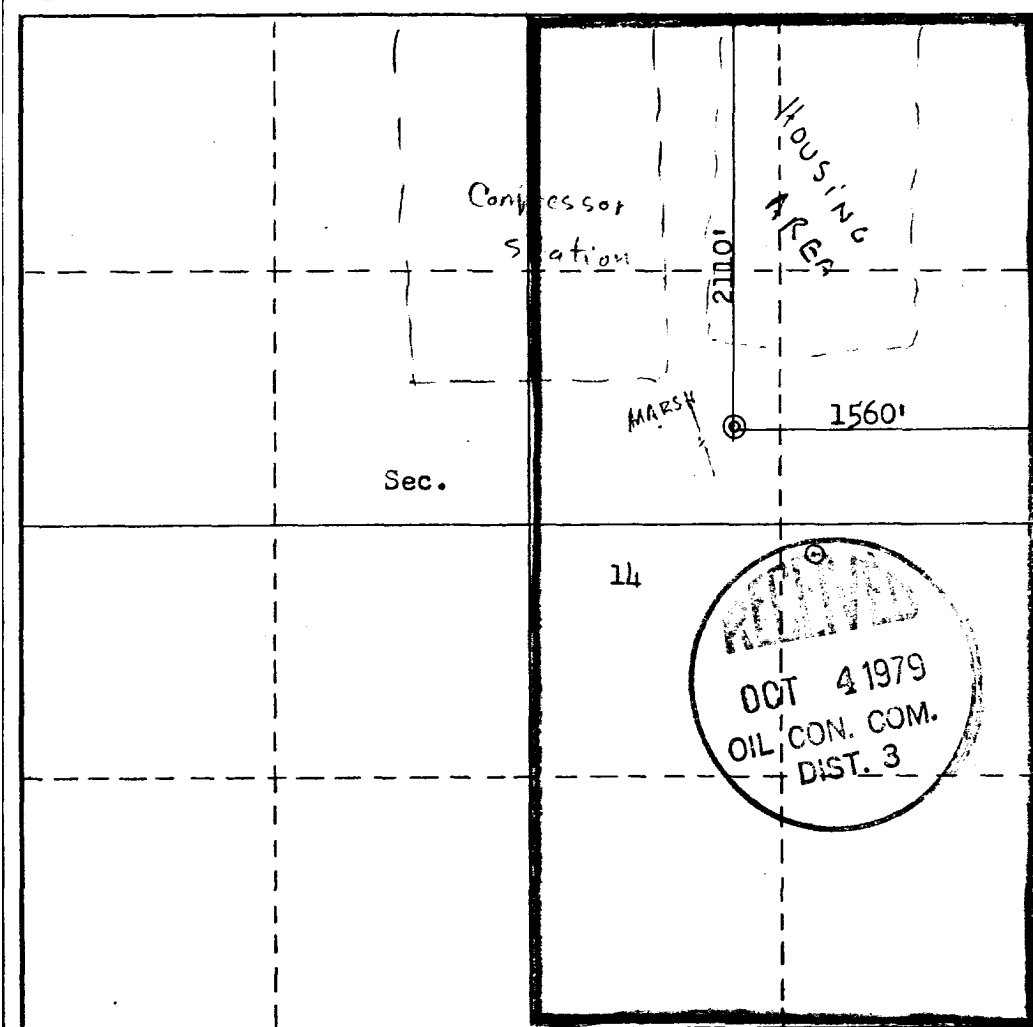
Operator AMOCO PRODUCTION COMPANY			Lease HARE GAS COM "D"		Well No. 1-E
Unit Letter G	Section 14	Township 29N	Range 11W	County San Juan	
Actual Footage Location of Well: 2110 feet from the North line and 1560 feet from the East line					
Ground Level Elev. 5574	Producing Formation Dakota	Pool Basin Dakota	Dedicated Acreage: 320 Acres		

1. Outline the acreage dedicated to the subject well by colored pencil or hachure marks on the plat below.
2. If more than one lease is dedicated to the well, outline each and identify the ownership thereof (both as to working interest and royalty).
3. If more than one lease of different ownership is dedicated to the well, have the interests of all owners been consolidated by communitization, unitization, force-pooling, etc?

☒ Yes ☐ No If answer is "yes," type of consolidation Communitization

If answer is "no," list the owners and tract descriptions which have actually been consolidated. (Use reverse side of this form if necessary.)

No allowable will be assigned to the well until all interests have been consolidated (by communitization, unitization, forced-pooling, or otherwise) or until a non-standard unit, eliminating such interests, has been approved by the Commission.



CERTIFICATION

I hereby certify that the information contained herein is true and complete to the best of my knowledge and belief.

B. E. Fackrell
Name

B. E. FACKRELL
Position
DISTRICT ENGINEER

Company
AMOCO PRODUCTION COMPANY

Date
SEPTEMBER 28, 1979

I hereby certify that the well location shown on this plat was plotted from field notes of actual surveys made by me or under my supervision, and that the same is true and correct to the best of my knowledge and belief.

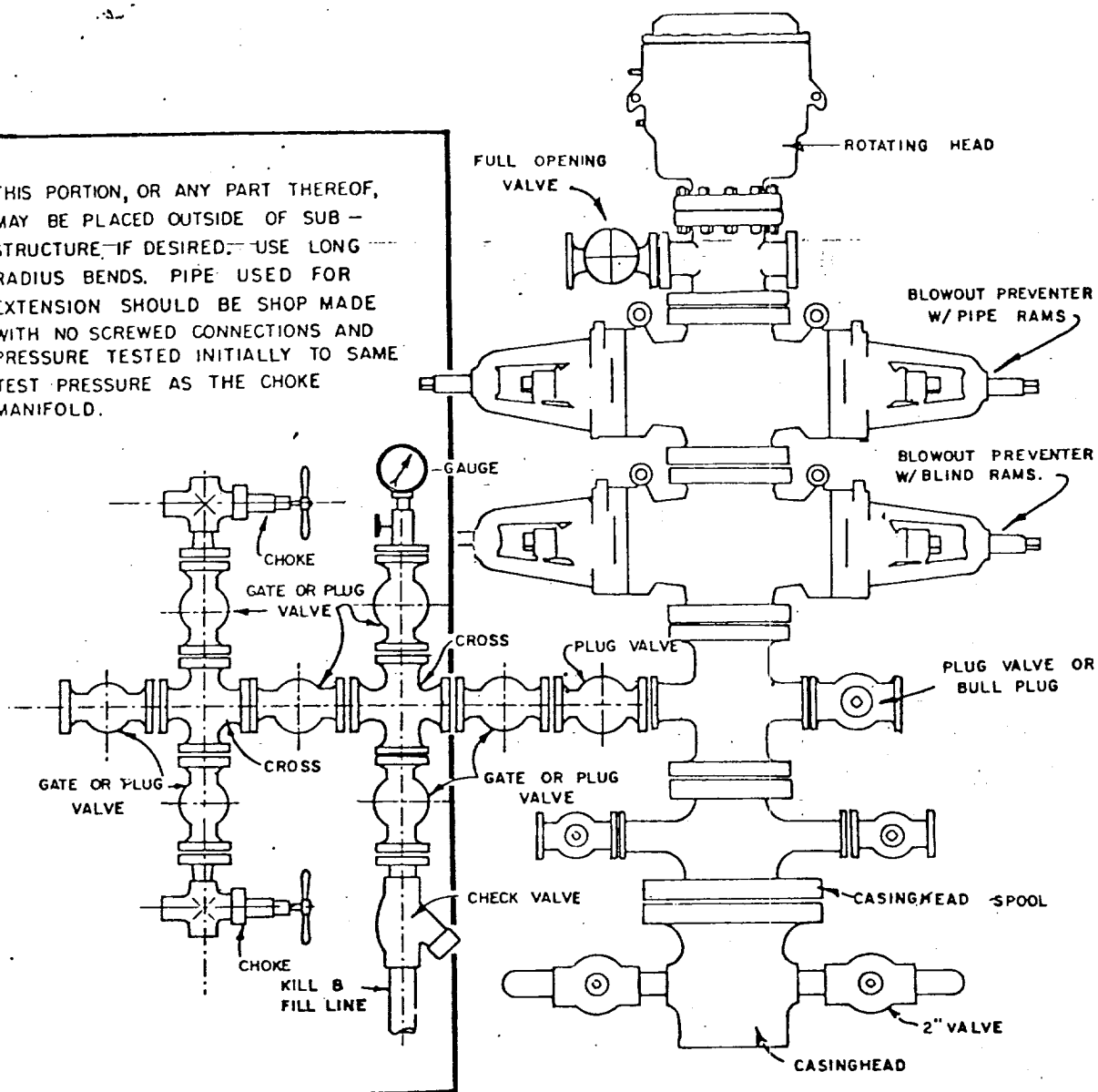
Date Surveyed
September 23, 1979

Registered Professional Engineer
and/or Land Surveyor

Fred B. Kerr Jr.
Signature

Certificate No.
3950 KERR, JR.

THIS PORTION, OR ANY PART THEREOF, MAY BE PLACED OUTSIDE OF SUB-STRUCTURE, IF DESIRED. USE LONG RADIUS BENDS. PIPE USED FOR EXTENSION SHOULD BE SHOP MADE WITH NO SCREWED CONNECTIONS AND PRESSURE TESTED INITIALLY TO SAME TEST PRESSURE AS THE CHOKE MANIFOLD.



BLOWOUT PREVENTER HOOKUP