

UNITED STATES  
DEPARTMENT OF THE INTERIOR  
GEOLOGICAL SURVEY

Form Approved.  
Budget Bureau No. 42-R1424

SUNDRY NOTICES AND REPORTS ON WELLS

(Do not use this form for proposals to drill or to deepen or plug back to a different reservoir. Use Form 9-331-C for such proposals.)

1. oil ☐ gas ☒ other ☐  
2. NAME OF OPERATOR  
Southland Royalty Company  
3. ADDRESS OF OPERATOR  
P.O. Drawer 570, Farmington, New Mexico 87401  
4. LOCATION OF WELL (REPORT LOCATION CLEARLY. See space 17 below.)  
AT SURFACE: 1120' FNL & 1070' FWL  
AT TOP PROD. INTERVAL:  
AT TOTAL DEPTH:

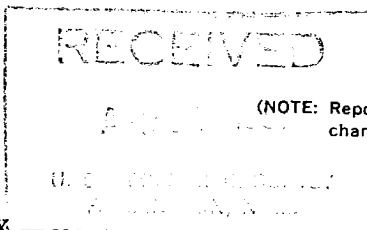
16. CHECK APPROPRIATE BOX TO INDICATE NATURE OF NOTICE, REPORT, OR OTHER DATA

REQUEST FOR APPROVAL TO:

- TEST WATER SHUT-OFF ☐  
FRACTURE TREAT ☐  
SHOOT OR ACIDIZE ☐  
REPAIR WELL ☐  
PULL OR ALTER CASING ☐  
MULTIPLE COMPLETE ☐  
CHANGE ZONES ☐  
ABANDON\* ☐

SUBSEQUENT REPORT OF:

- ☐  
☐  
☐  
☐  
☐  
☐  
☐  
☐  
☐  
☐



(NOTE: Report results of multiple completion or zone change on Form 9-330.)

- (other) Perforation & Stimulation ☒  
Production Tubing Report ☒

17. DESCRIBE PROPOSED OR COMPLETED OPERATIONS (Clearly state all pertinent details, and give pertinent dates, including estimated date of starting any proposed work. If well is directionally drilled, give subsurface locations and measured and true vertical depths for all markers and zones pertinent to this work.)\*

4-10-81 Perforated the Dakota at 6385', 6391', 6397', 6403', 6409', 6415', 6430', 6436', 6442', 6448' & 6454'. Total of 11 holes.  
Frac'd with 87,948 gallons of 30# gel and 60,000# of 20/40 sand.  
ISIP 2600 psi, ATP 3150 psi, AIR 23 BPM.

4-11-81 Ran 203 joints (6439') of 2-3/8", 4.7#, J-55, EUE tubing set at 6448'.

Subsurface Safety Valve: Manu. and Type \_\_\_\_\_ Set @ \_\_\_\_\_ Ft.

18. I hereby certify that the foregoing is true and correct

SIGNED Ethel G. Gifford TITLE Drilling Clerk DATE April 14, 1981

(This space for Federal or State office use)

APPROVED BY \_\_\_\_\_ TITLE \_\_\_\_\_ DATE \_\_\_\_\_  
CONDITIONS OF APPROVAL, IF ANY:

ACCEPTED FOR RECORD

APR 21 1981

\*See Instructions on Reverse Side

FARMINGTON DISTRICT

BY \_\_\_\_\_