

UNITED STATES
DEPARTMENT OF THE INTERIOR
GEOLOGICAL SURVEY

Form Approved.
Budget Bureau No. 42-R1424

SUNDRY NOTICES AND REPORTS ON WELLS

(Do not use this form for proposals to drill or to deepen or plug back to a different reservoir. Use Form 9-331-C for such proposals.)

1. oil ☐ gas ☒ other
well well

2. NAME OF OPERATOR

Southland Royalty Company

3. ADDRESS OF OPERATOR

P.O. Drawer 570, Farmington, New Mexico 87401

4. LOCATION OF WELL (REPORT LOCATION CLEARLY. See space 17 below.)

AT SURFACE: 1540' FSL & 1655' FEL

AT TOP PROD. INTERVAL:

AT TOTAL DEPTH:

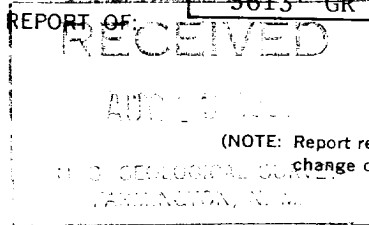
16. CHECK APPROPRIATE BOX TO INDICATE NATURE OF NOTICE, REPORT, OR OTHER DATA

REQUEST FOR APPROVAL TO:

TEST WATER SHUT-OFF ☐
FRACTURE TREAT ☐
SHOOT OR ACIDIZE ☐
REPAIR WELL ☐
PULL OR ALTER CASING ☐
MULTIPLE COMPLETE ☐
CHANGE ZONES ☐
ABANDON* ☐
(other) ☐

SUBSEQUENT REPORT OF:

☐
☐
☐
☒
☐
☐
☐
☐
☐



(NOTE: Report results of multiple completion or zone change on Form 9-330.)

17. DESCRIBE PROPOSED OR COMPLETED OPERATIONS (Clearly state all pertinent details, and give pertinent dates, including estimated date of starting any proposed work. If well is directionally drilled, give subsurface locations and measured and true vertical depths for all markers and zones pertinent to this work.)*

7-24-81 Pulled 210 joints (6429.85') of 2-3/8", 4.70#, J-55, EUE tubing.

8-07-81 Relanded 209 joints (6397') of 2-3/8", 4.70#, J-55, EUE tubing at 6409'.

Subsurface Safety Valve: Manu. and Type _____ Set @ _____ Ft.

18. I hereby certify that the foregoing is true and correct

SIGNED R. E. Fiddle TITLE District Engineer DATE August 18, 1981

(This space for Federal or State office use)

APPROVED BY _____ TITLE _____ DATE Aug 24 1981
CONDITIONS OF APPROVAL, IF ANY: