

UNITED STATES  
DEPARTMENT OF THE INTERIOR  
GEOLOGICAL SURVEY

30-045-24185

## APPLICATION FOR PERMIT TO DRILL, DEEPEN, OR PLUG BACK

## 1a. TYPE OF WORK

DRILL ☒DEEPEN ☐PLUG BACK ☐

## b. TYPE OF WELL

OIL  
WELL ☐GAS  
WELL ☒

OTHER

SINGLE  
ZONE ☐MULTIPLE  
ZONE ☐

## 2. NAME OF OPERATOR

Tenneco Oil Company

## 3. ADDRESS OF OPERATOR

720 S. Colorado Blvd., Denver, CO 80222

## 4. LOCATION OF WELL (Report location clearly and in accordance with any State requirements.\*)

At surface

1750 FSL 1750 FEL

At proposed prod. zone

## 14. DISTANCE IN MILES AND DIRECTION FROM NEAREST TOWN OR POST OFFICE\*

3.1 miles N-N-E of Navajo Dam P.O.

## 15. DISTANCE FROM PROPOSED\*

LOCATION TO NEAREST  
PROPERTY OR LEASE LINE, FT.  
(Also to nearest drlg. unit line, if any)

## 16. NO. OF ACRES IN LEASE

1201.16

18. DISTANCE FROM PROPOSED LOCATION\*  
TO NEAREST WELL, DRILLING, COMPLETED,  
OR APPLIED FOR, ON THIS LEASE, FT.

## 19. PROPOSED DEPTH

7700'

17. NO. OF ACRES ASSIGNED  
TO THIS WELL

321.51 E/320.46

## 20. ROTARY OR CABLE TOOLS

Rotary

## 21. ELEVATIONS (Show whether DF, RT, GR, etc.)

6265 GR

## 22. APPROX. DATE WORK WILL START\*

ASAP

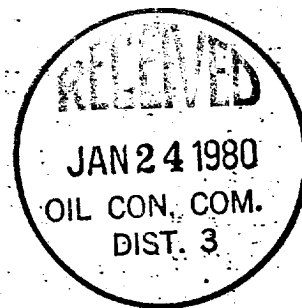
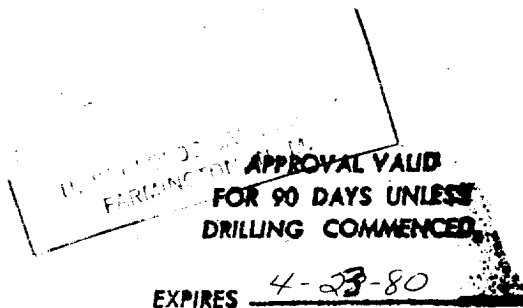
## 23.

## PROPOSED CASING AND CEMENTING PROGRAM

SIZE OF HOLE	SIZE OF CASING	WEIGHT PER FOOT	SETTING DEPTH	QUANTITY OF CEMENT
13 3/4"	9 5/8" new	36#, K-55	± 300'	Circulate to surface
8 3/4"	7" new	23#, K-55	± 3600'	Circulate to surface
6 1/2"	4 1/2" new	10.5#, 11.6#	± 7700'	Circulate through liner hanger

No abnormal temperatures, pressures or geologic hazards are expected

THE GAS IS DEDICATED



IN ABOVE SPACE DESCRIBE PROPOSED PROGRAM: If proposal is to deepen or plug back, give data on present productive zone and proposed new productive zone. If proposal is to drill or deepen directionally, give pertinent data on subsurface locations and measured and true vertical depths. Give blowout preventer program, if any.

## 24.

SIGNED

M. Lee Freeman

TITLE Staff Production Analyst

DATE December 19, 1979

(This space for Federal or State office use)

PERMIT NO.

APPROVAL DATE

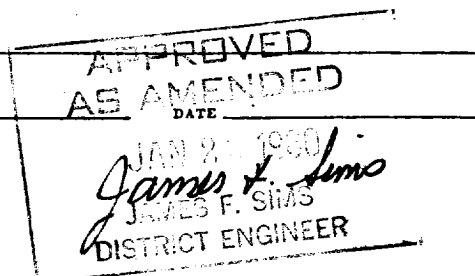
APPROVED BY

TITLE

CONDITIONS OF APPROVAL, IF ANY:

ak Frank

NMOCC



\*See Instructions On Reverse Side

## OIL CONSERVATION DIVISION

STATE OF NEW MEXICO  
ENERGY AND MINERALS DEPARTMENTP. O. BOX 2088  
SANTA FE, NEW MEXICO 87501

1201.16

Form O-102  
Revised 10-1-78

All distances must be from the outer boundaries of the Section

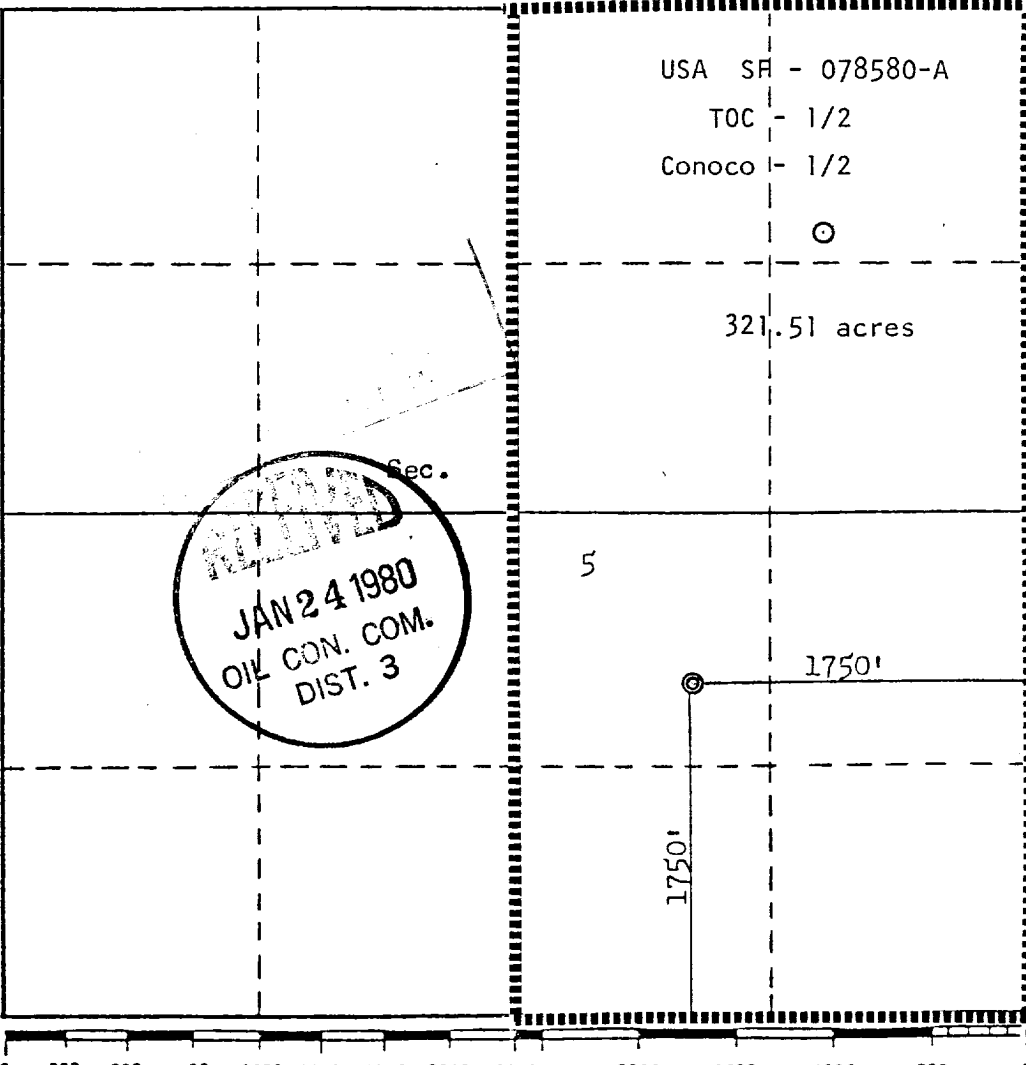
Operator <b>TENNECO OIL COMPANY</b>		Lease <b>MOORE</b>		Well No. <b>6-E</b>	
Unit Letter <b>J</b>	Section <b>5</b>	Township <b>30N</b>	Range <b>8W</b>	County <b>San Juan</b>	
Actual Footage Location of Well: <b>1750</b> feet from the <b>South</b> line and <b>1750</b> feet from the <b>East</b> line					
Ground Level Elev. <b>6265</b>	Producing Formation <b>Dakota</b>		Pool <b>Basin Dakota</b>		Dedicated Acreage: <b>321.51</b> Acres

1. Outline the acreage dedicated to the subject well by colored pencil or hachure marks on the plat below.
2. If more than one lease is dedicated to the well, outline each and identify the ownership thereof (both as to working interest and royalty).
3. If more than one lease of different ownership is dedicated to the well, have the interests of all owners been consolidated by communitization, unitization, force-pooling, etc?

☐ Yes ☐ No If answer is "yes," type of consolidation \_\_\_\_\_

If answer is "no," list the owners and tract descriptions which have actually been consolidated. (Use reverse side of this form if necessary.) \_\_\_\_\_

No allowable will be assigned to the well until all interests have been consolidated (by communitization, unitization, forced-pooling, or otherwise) or until a non-standard unit, eliminating such interests, has been approved by the Commission.

	<b>CERTIFICATION</b>
	<p>I hereby certify that the information contained herein is true and complete to the best of my knowledge and belief.</p> <p><i>M. L. Freeman</i> Name <b>M. L. Freeman</b></p> <p>Position <b>Staff Production Analyst</b></p> <p>Company <b>Tenneco Oil Company</b></p> <p>Date <b>December 19, 1979</b></p> <p>I hereby certify that the well location shown on this plat was plotted from field notes of actual surveys made by me or under my supervision, and that the same is true and correct to the best of my knowledge and belief.</p> <p>Date Surveyed <b>October 12, 1979</b></p> <p>Registered Professional Engineer and/or Land Surveyor <i>Fred B. Kerr Jr.</i> <b>Fred B. Kerr Jr.</b> Certified by Notary Public <b>3950 B. KERR, JR.</b></p>

TECNICO OIL COMPANY

PROGNOSIS TO DRILL AND COMPLETE

DIVISION: Rocky Mountain

DATE: September 12, 1979

LEASE: Moore

WELL NO.: 6-E

LOCATION: 1750' FSL, 1750' FEL  
Sec. 5, T 30N, R 8W  
San Juan County, New Mexico

FIELD: Basin Dakota

ESTIMATED ELEVATION: 6290'

ESTIMATED TOTAL DEPTH: 7770'

PROJECTED HORIZON: Dakota

DRILLING, CASING AND CEMENT PROGRAM:

- (1) MIRURT.
- (2) Drill a 13-3/4" hole to 300±. Run 9 5/8", 36#, K-55, ST&C casing to T.D. and cement to surface. Use 2% CaCl<sub>2</sub> in cement.
- (3) Cut off casing and weld on casing head. Pressure test weld to 1000 psi. NUBOP's and manifold. Pressure test casing, BOP's and manifold to 1000 psi for 30 minutes.
- (4) Drill out shoe and reduce hole to 8 3/4". Drill 8 3/4" hole to 3600±. Run 7", 23#, K-55, ST&C casing to T.D. and cement to surface. (Set 7" 200-300' into Lewis shale.)
- (5) Land casing is slips and cut off. Install drilling spool on casing head. Install rotating head, manifold and flare line. Pressure test blind rams, manifold and casing to 1000 psi for 15 minutes. Pick up drilling assembly and 3 1/2" drill
- (6) Drill out of 7" with 6 1/4" bit. Drill to within 5' of shoe and displace water with Nitrogen. Drill 5' of formation and blow with gas until well dusts. Drill to TD.
- (7) Log the hole dry as directed by the wellsite geological engineer and gauge the natural flow from the Dakota.
- (8) If productive, run 4 1/2" casing to T.D. as per casing design. Cement in one stage. Bring cement to above Mesaverde zone.
- (9) If nonproductive, plug and abandon as per U.S.G.S. requirements.

ESTIMATED FORMATION TOPS:

OJO Alamo	2000'	Point Look Out	5300'
Pictured Cliffs	3080'	Mancos	5670'
Lewis	3180'	Gallup	6600'
Cliffhouse	4880'	Greenhorn	7340'
Menefee	5000'	Dakota "A"	7470'
		T.D.	7770'

### DRILLING MUD PROGRAM:

- 0 - 300' Spud Mud.
- 300' - 3600' Low solids fresh water mud. Use Benex to flocculate mud as needed.  
No WL control.
- 3600' - T.D. Gas.

### CORING AND TESTING PROGRAM:

No cores or tests.

### DEVIATION SURVEYS:

1. Survey surface hole at 100' intervals. Maximum allowable deviation at 250' is  $\frac{1}{2}^{\circ}$ .
2. FROM SURFACE TO TOTAL DEPTH DEVIATION SURVEYS MUST BE TAKEN EVERY 500' OR EACH TRIP WHICHEVER IS FIRST. This may entail running the TOTCO on wireline. Record each survey on the AAODC Drilling Report Sheet. Maximum allowable change in deviation is  $1^{\circ}$  per 100'.

### SAMPLES:

As directed by wellsite geological engineer.

### WELL SURVEYS:

Majority of logs will be cased hole GR - Neutron or TDT.

A few will be open hole GR - Induction.

### BOP:

PREVENTORS MUST BE CHECKED FOR OPERATION EVERY 24 HOURS, AND THE CHECK MUST BE RECORDED ON THE AAODC DRILLING REPORT SHEET.

## REPORTS

Drilling reports for the past 24 hours will include depth, footage, time distribution, activity breakdown, mud properties, bit record, bottom hole assembly, daily and cumulative mud costs, plus any other pertinent information; will be called into Tenneco Oil Company, Denver, Colorado between 7:30 A.M. and 8:00 A.M.

1. 303-758-7130 (office) - Don Barnes  
303-758-7287 - Don Barnes private line - Monday-Friday (before 7:45 A.M.)
2. 303-936-0704 (home) - Don Barnes - weekends and holidays
3. 303-795-0221 (home) - John Owen - if Don Barnes not available

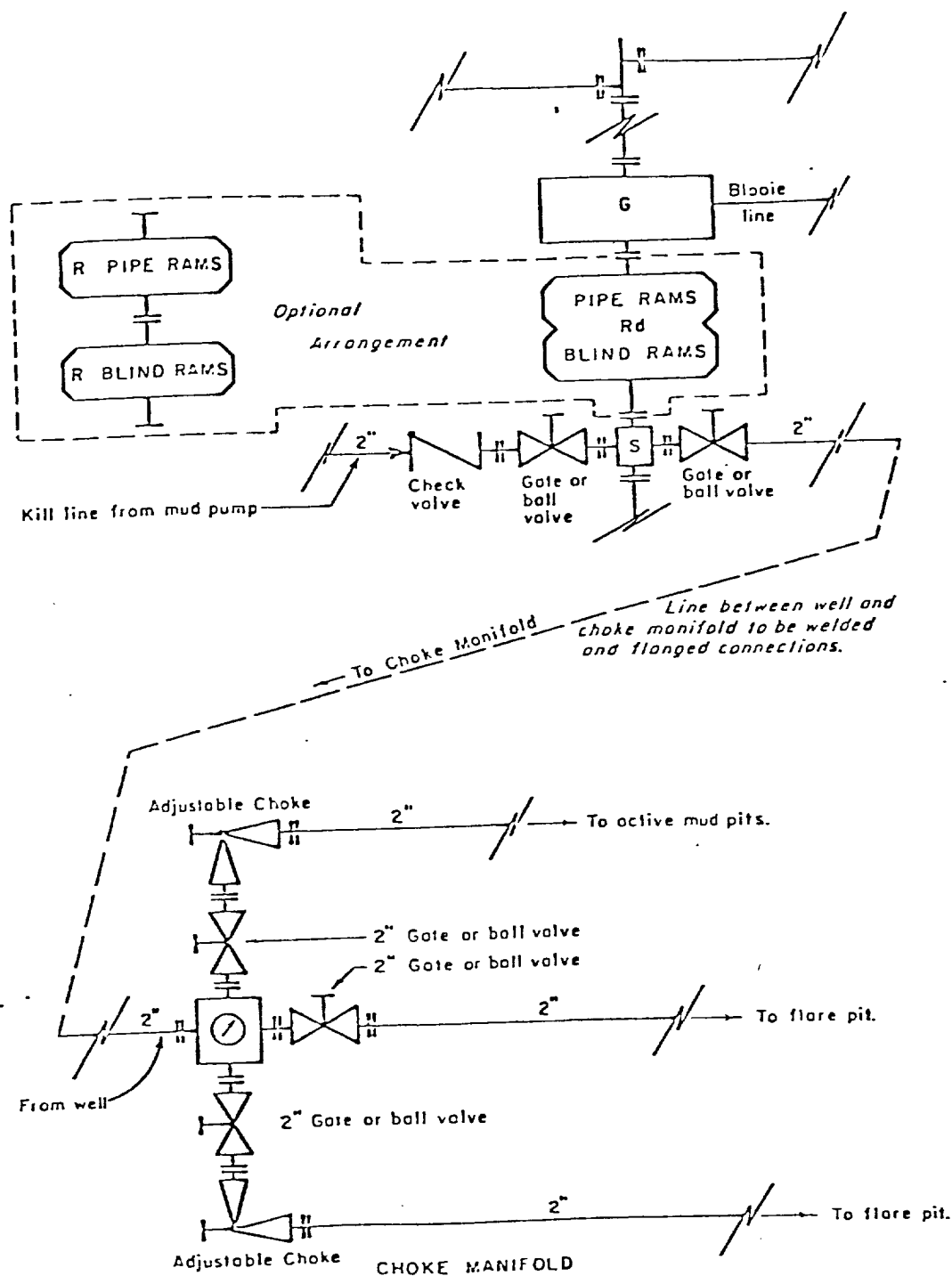
The yellow sheet of the IADC Report to be filled out completely, the original copy of the drilling time recorder, and copies of any invoices from this well signed and received for Tenneco Oil Company will be mailed daily to:

TENNECO OIL COMPANY  
PENTHOUSE  
720 SOUTH COLORADO BOULEVARD  
DENVER, COLORADO 80222

ATTENTION: DRILLING DEPARTMENT

In case of an emergency, notify the following:

1. Mr. Don Barnes, Division Drilling Engineer - 303-936-0704.
2. Mr. John Owen, Project Drilling Engineer - 303-795-0221
3. Mr. Mike Lacey, Division Production Manager - 303-979-0509.



- All equipment to be 3,000 psi working pressure except as noted.
- Rd Double ram type preventer with two sets of rams.
  - R Single ram type preventer with one set of rams.
  - S Drilling spool with side outlet connections for choke and kill lines.
  - G Rotating head 150 psi working pressure minimum

#### ARRANGEMENT C

TENNECO OIL COMPANY  
 ROCKY MOUNTAIN DIVISION  
 REQUIRED MINIMUM  
 BLOWOUT PREVENTER AND  
 CHOKE MANIFOLD

J. MAGILL 10-26-78 EVI

1. Existing Road - Please refer to Map No. 1 which shows the existing roads. New roads which will be required have been marked on this map. All existing and new roads will be properly maintained during the duration of this project.
2. Planned Access Roads - Please refer to Map No. 1. The grade of the access roads will be consistent with that of the local terrain. The road surface will not exceed twenty feet (20') in width. Upon completion of the project, the access road will be adequately drained to control soil erosion. Drainage facilities may include ditches, water bars, culverts or any other measure deemed necessary by trained Company personnel to insure proper drainage. Gates and/or cattleguards will be installed if necessary.
3. Location of Existing Wells - Please refer to Map No. 2.
4. Location of Tank Batteries, Production Facilities, and Production Gathering and Service Lines - Please refer to Maps No. 1 and No. 2. Map No. 2 shows the existing roads and new proposed access roads. All known production facilities are shown on these two maps.
5. Location and Type of Water Supply - Water for the proposed project will be obtained from a private source.
6. Source of Construction Materials - No additional materials will be required to build either the access road or the proposed location.
7. Methods of Handling Waste Materials - All garbage and trash materials will be put into a burn pit shown on the attached Location Plat No. 1. When clean-up operations are begun on the proposed project, the burn pit with its refuse will be buried to a depth of at least three feet (3'). A latrine, the location of which is also shown on Plat No. 1. will be provided for human waste. If large amounts of liquids are left in the reserve pit after completion of the project, the pit will be fenced until the liquids have had adequate time to dry. The location clean-up will not take place until such time as the reserve pit can be properly covered over to prevent run-off from carrying any of these materials into the watershed. No earthen pit will be located on natural drainage; all earthen pits will be so constructed as to prevent leakage from occurring.

8. Ancillary Facilities - No camps or airstrips will be associated with this project.
9. Wellsite Layout - Please refer to the attached Plat No. 1.
10. Plans for Restoration of the Surface - After completion of the proposed project the location will be cleaned and leveled. The location will be left in such a condition that will enable reseeding operations to be carried out. Seed mixture as designated by the responsible government agency will be used. The reseeding operation will be performed during the time period set forth by the regulatory body. The location production equipment will be painted as designated by the responsible government agency.
11. Other Information - The proposed site is located atop a large slightly rolling mesa top East of Pump Canyon and North of the San Juan River. The soil is sandy loam. The area is an old chained area supporting primarily western wheat grass.
12. Operator's Representative -  
SEE DRILLING PROGNOSIS
13. Certification - I hereby certify that I, or persons under my direct supervision, have inspected the proposed drillsite and access route; that I am familiar with the conditions which presently exist; that the statements mad in this plan are, to the best of my knowledge, true and correct; and that the work associated with the operations proposed herein will be performed by Tenneco Oil Company Company and its contractors and sub-contractors in conformity with this plan and the terms and conditions under which it is approved.



L. Freeman  
Staff Production Analyst



TENNECO OIL COMPANY

CALCULATION SHEET

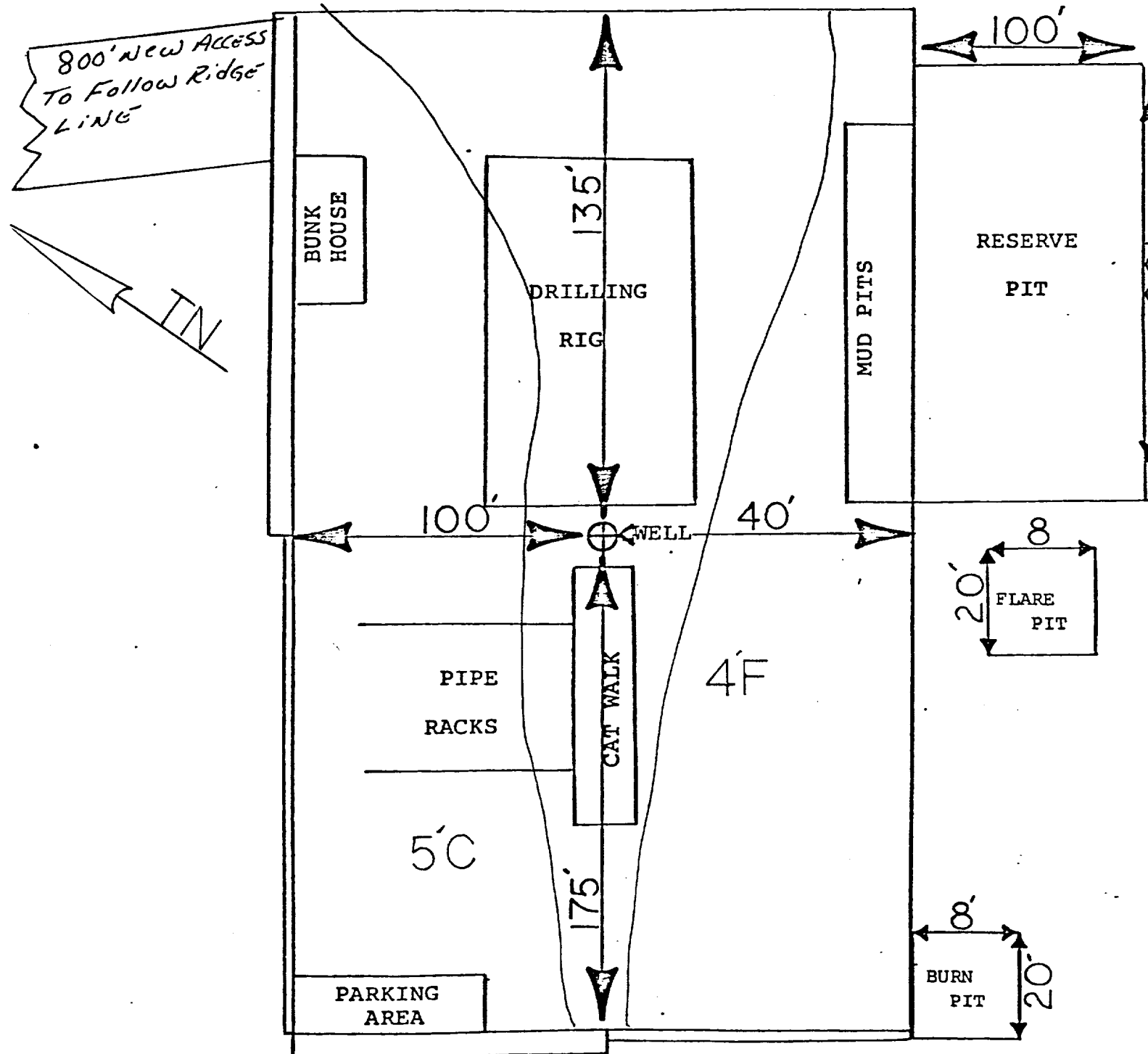
EXHIBIT

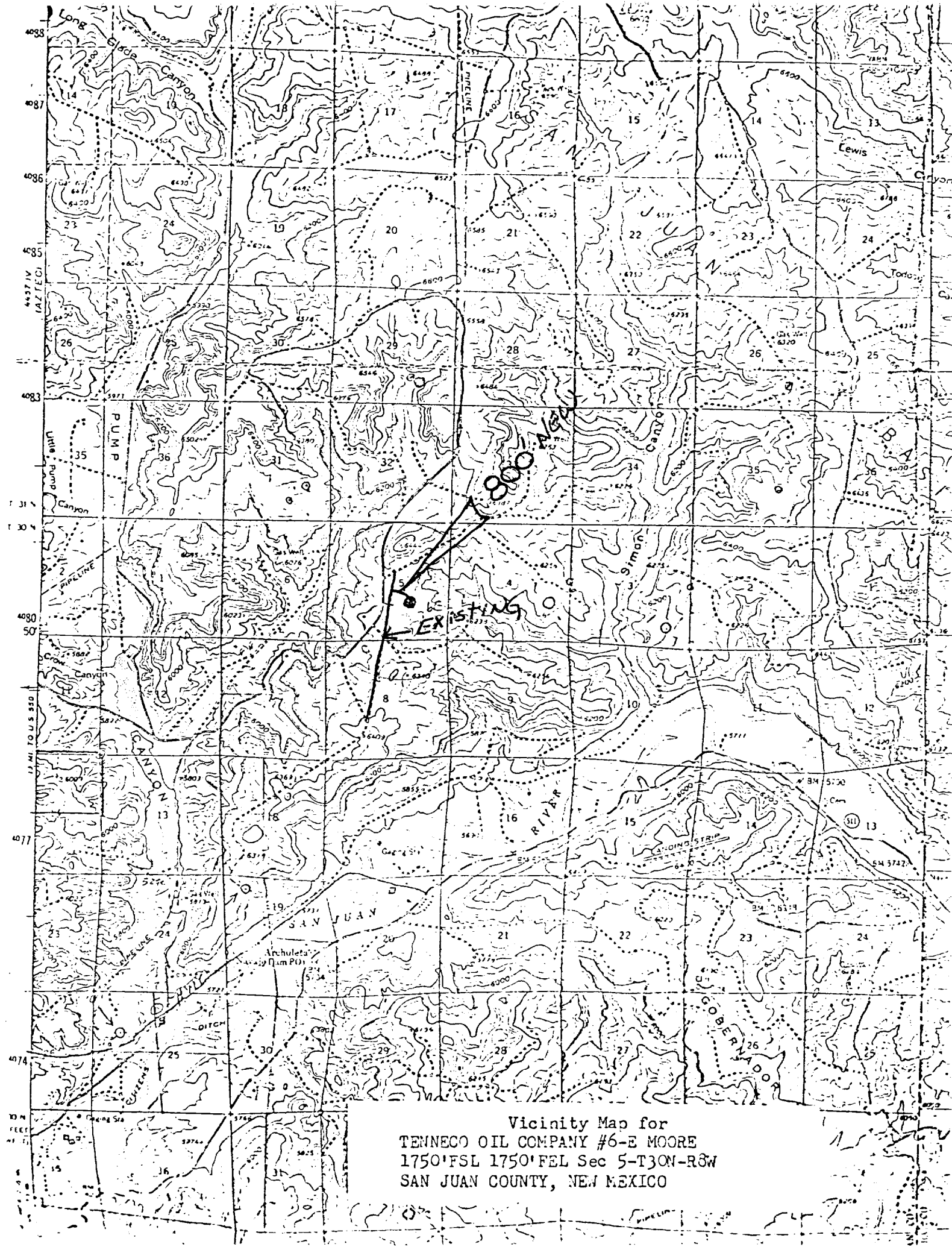
ANY

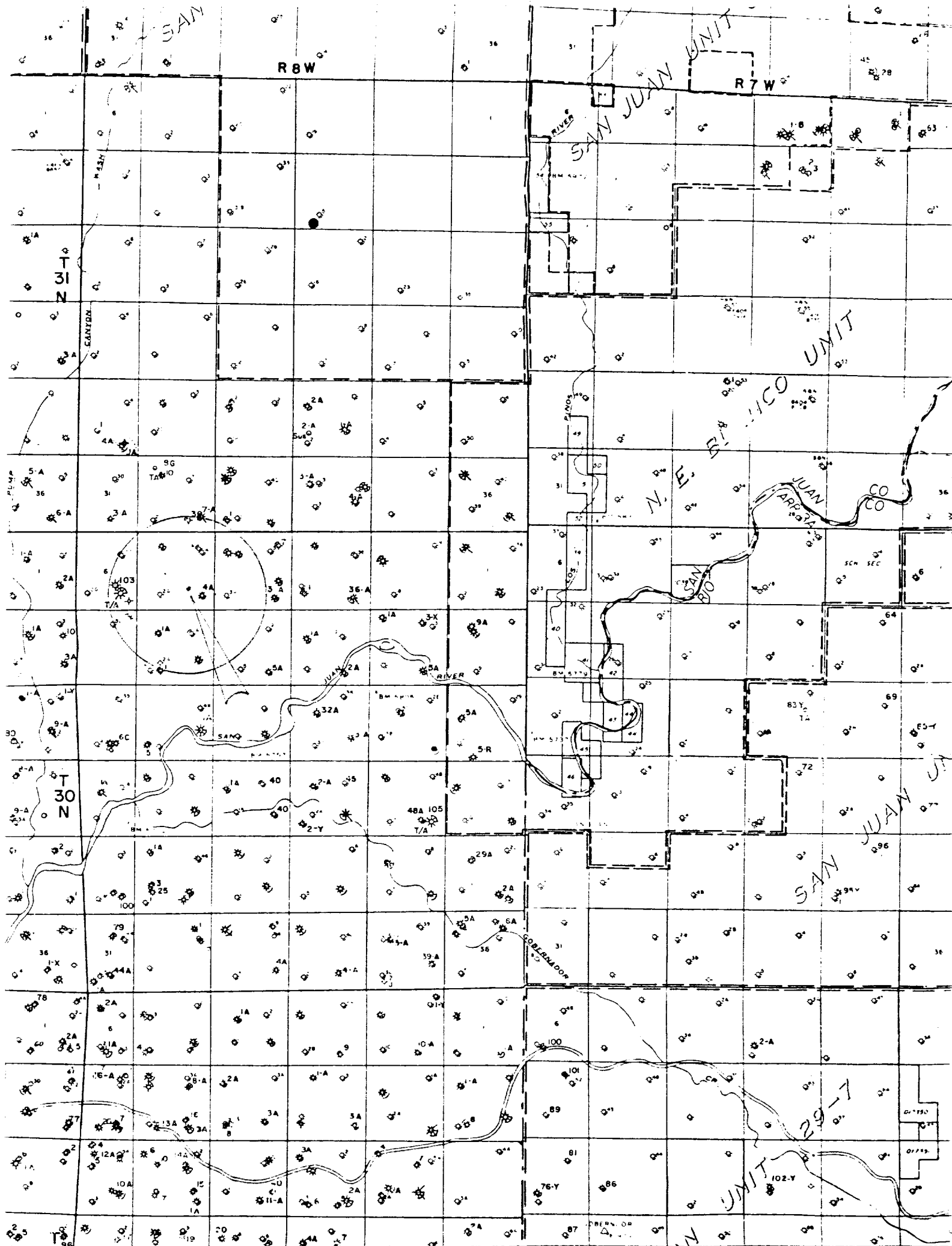
CT DRILLING WELL SITE LAYOUT *MOORE O.E.*

TION *1750 FSL 1750 FEL SEC 5, T30N, R8W*

DATE *12/19/79*







UNITED STATES  
DEPARTMENT OF THE INTERIOR  
GEOLOGICAL SURVEY

**SUNDRY NOTICES AND REPORTS ON WELLS**

(Do not use this form for proposals to drill or to deepen or plug back to a different reservoir. Use Form 9-331-C for such proposals.)

1. oil ☐ well ☐ gas ☒ well ☐ other

2. NAME OF OPERATOR  
Tenneco Oil Company

3. ADDRESS OF OPERATOR  
720 S. Colo. Blvd., Denver, CO 80222

4. LOCATION OF WELL (REPORT LOCATION CLEARLY. See space 17 below.)  
AT SURFACE:  
AT TOP PROD. INTERVAL:  
AT TOTAL DEPTH:

16. CHECK APPROPRIATE BOX TO INDICATE NATURE OF NOTICE, REPORT, OR OTHER DATA

REQUEST FOR APPROVAL TO:

TEST WATER SHUT-OFF ☐  
FRACTURE TREAT ☐  
SHOOT OR ACIDIZE ☐  
REPAIR WELL ☐  
PULL OR ALTER CASING ☐  
MULTIPLE COMPLETE ☐  
CHANGE ZONES ☐  
ABANDON\* ☐  
(other) ☐

SUBSEQUENT REPORT OF:

☒  
☐  
☐  
☐  
☐  
☐  
☐  
☐  
☐

5. LEASE

SF-078580A

6. IF INDIAN, ALLOTTEE OR TRIBE NAME

7. UNIT AGREEMENT NAME

8. FARM OR LEASE NAME

Moore

9. WELL NO.

6E

10. FIELD OR WILDCAT NAME

Basin

11. SEC., T., R., M., OR BLK. AND SURVEY OR AREA

Sec. 5; T30N; R8W

12. COUNTY OR PARISH

San Juan

13. STATE

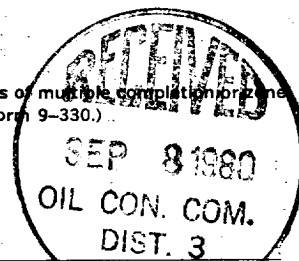
New Mexico

14. API NO.

15. ELEVATIONS (SHOW DF, KDB, AND WD)

6265' GR

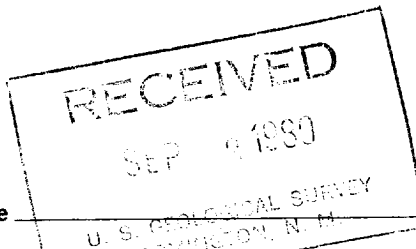
(NOTE: Report results of multiple completion operations change on Form 9-330.)



17. DESCRIBE PROPOSED OR COMPLETED OPERATIONS (Clearly state all pertinent details, and give pertinent dates, including estimated date of starting any proposed work. If well is directionally drilled, give subsurface locations and measured and true vertical depths for all markers and zones pertinent to this work.)\*

7/9-7/14/80

Drill to 3540. Ran 83 jts of 7" csg Set @ 3540. Cmt w/15 BBLS mud flush, 600 sx 50/50 Pozmix, 4% gel. Tail in w/150 sxs Class-B. Circ cement to surface. Run 108 jts 4 1/2" 11.6# 10.5# csg set w/shoe @ 7770. Top of liner @ 3427. Cmt w/425 sx 50/50 Pozmix, 4% gel, 6% hr -4 Tail in w/100 sx CLB, Plug down Tagged cement @ 7555.



Subsurface Safety Valve: Manu. and Type

Set @ \_\_\_\_\_ Ft.

18. I hereby certify that the foregoing is true and correct

SIGNED

*Carly J. Stettin*

Asst Div. Admin. Manager

8/25/80

TITLE DATE

(This space for Federal or State office use)

ACCEPTED FOR RECORD

APPROVED BY

CONDITIONS OF APPROVAL, IF ANY:

TITLE

DATE

SEP 04 1980

FARMINGTON DISTRICT

\*See Instructions on Reverse Side

BY

*BW*

NMOCC