

UNITED STATES
DEPARTMENT OF THE INTERIOR
GEOLOGICAL SURVEY

30-045-24212

APPLICATION FOR PERMIT TO DRILL, DEEPEN, OR PLUG BACK

1a. TYPE OF WORK

DRILL ☒DEEPEN ☐PLUG BACK ☐

b. TYPE OF WELL

OIL
WELL ☐GAS
WELL ☒

OTHER

SINGLE
ZONE ☐MULTIPLE
ZONE ☒

2. NAME OF OPERATOR

Southland Royalty Company

3. ADDRESS OF OPERATOR

P. O. Drawer 570, Farmington, NM 87401

4. LOCATION OF WELL (Report location clearly and in accordance with any State requirements.)

At surface

P 1015' FSL & 850' FEL
At proposed prod. zone

14. DISTANCE IN MILES AND DIRECTION FROM NEAREST TOWN OR POST OFFICE*

Approximately 2 1/4 miles from Bloomfield, NM

15. DISTANCE FROM PROPOSED*

LOCATION TO NEAREST
PROPERTY OR LEASE LINE, FT.
(Also to nearest drlg. unit line, if any)

470'

18. DISTANCE FROM PROPOSED LOCATION*
TO NEAREST WELL, DRILLING, COMPLETED,
OR APPLIED FOR, ON THIS LEASE, FT.

835'

16. NO. OF ACRES IN LEASE

617.8 acres

19. PROPOSED DEPTH

6630'

17. NO. OF ACRES ASSIGNED
TO THIS WELL

E 308.9 320

20. ROTARY OR CABLE TOOLS

Rotary

21. ELEVATIONS (Show whether DF, RT, GR, etc.)

5733' GR

22. APPROX. DATE WORK WILL START*

March 31, 1980

23. PROPOSED CASING AND CEMENTING PROGRAM

SIZE OF HOLE	SIZE OF CASING	WEIGHT PER FOOT	SETTING DEPTH	QUANTITY OF CEMENT
12 1/4"	8 5/8"	24#	200'	140 Sacks (Circulate)
7 7/8"	5 1/2"	15.5#	6630'	215 Sacks (Stg. 1-Cover Gallup)
				245 Sacks (Stg. 2-Cover Cliff House)
				180 Sacks (Stg. 3-Cover Ojo Alamo)

Surface formation is Nacimiento.

Top of Ojo Alamo sand is at 1055'.

Top of Pictured Cliffs sand is at 1890'.

Fresh water mud will be used to drill from surface to total depth.

It is anticipated that a GR-Density and IES log will be run from surface to total depth.

No abnormal pressures or poisonous gases are anticipated in this well.

It is expected that this well will be drilled before July 31, 1980. This depends on time required for approval, rig availability and the weather.

Gas is dedicated.

IN ABOVE SPACE DESCRIBE PROPOSED PROGRAM: If proposal is to deepen or plug back, give data on present productive zone and proposed new productive zone. If proposal is to drill or deepen directionally, give pertinent data on subsurface locations and measured and true vertical depths. Give blowout preventer program, if any.

24.

SIGNED

TITLE District Engineer

DATE 1-29-80

(This space for Federal or State office use)

PERMIT NO.

APPROVAL DATE

APPROVED BY

TITLE

CONDITIONS OF APPROVAL, IF ANY:

APPROVED
AS AMENDED

DATE

FEB 2 1980
James F. Sims
JAMES F. SIMS
DISTRICT ENGINEER

NMOCC

OIL CONSERVATION DIVISION

STATE OF NEW MEXICO
ENERGY AND MINERALS DEPARTMENTP. O. BOX 2088
SANTA FE, NEW MEXICO 87501Form C-107
Revised 10-1-78

All distances must be from the outer boundaries of the Section.

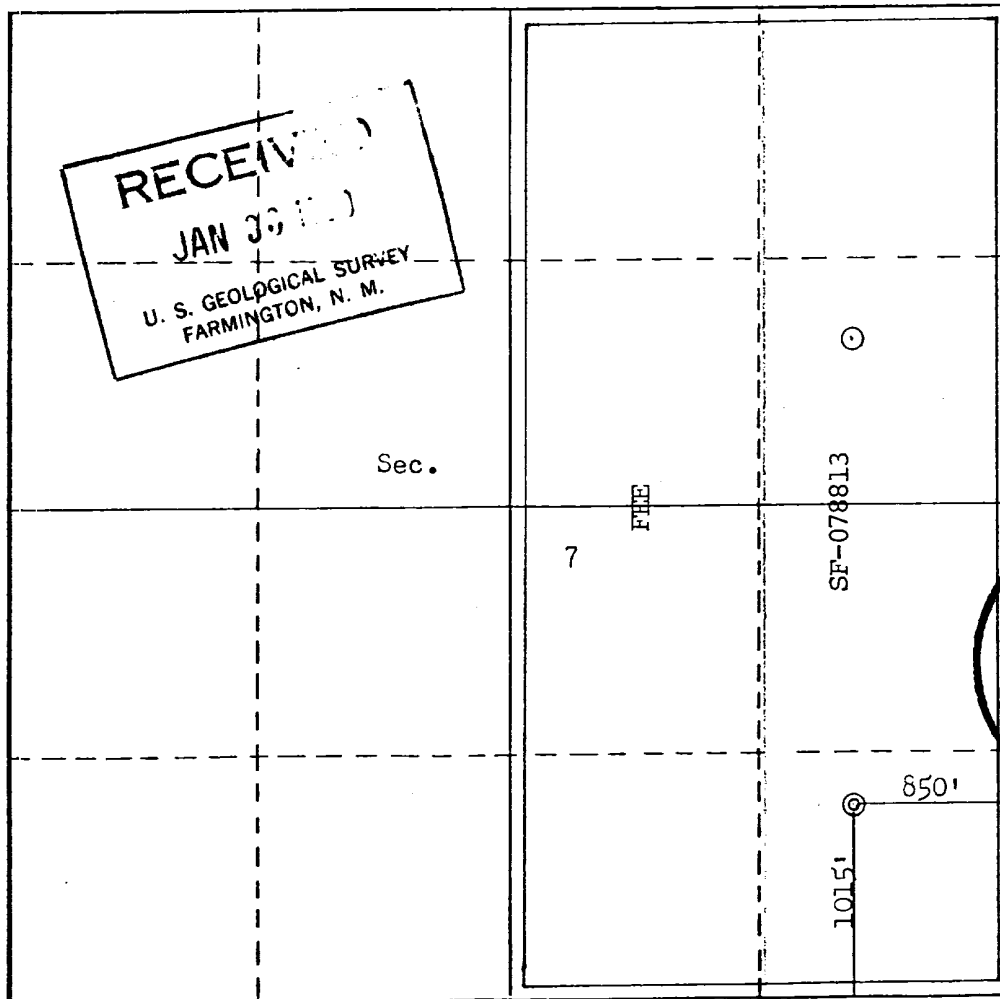
Operator • SOUTHLAND ROYALTY COMPANY			Lease COOPER "B"		Well No. 1-E
Unit Letter P	Section 7	Township 29N	Range 11W	County San Juan	
Actual Footage Location of Well: 1015 feet from the South line and 850 feet from the East line					
Ground Level Elev. 5733	Producing Formation Dakota - Mesa Verde		Pool Basin - Blanco	Dedicated Acreage: 308.9 320 Acres	

1. Outline the acreage dedicated to the subject well by colored pencil or hatchure marks on the plat below.
2. If more than one lease is dedicated to the well, outline each and identify the ownership thereof (both as to working interest and royalty).
3. If more than one lease of different ownership is dedicated to the well, have the interests of all owners been consolidated by communitization, unitization, force-pooling, etc?

☒ Yes ☐ No If answer is "yes," type of consolidation Communitized

If answer is "no," list the owners and tract descriptions which have actually been consolidated. (Use reverse side of this form if necessary.) _____

No allowable will be assigned to the well until all interests have been consolidated (by communitization, unitization, forced-pooling, or otherwise) or until a non-standard unit, eliminating such interests, has been approved by the Commission.



CERTIFICATION

I hereby certify that the information contained herein is true and complete to the best of my knowledge and belief.

Name
Curtis C. Parsons
Position
District Engineer
Company
Southland Royalty Company
Date
January 30, 1980

RECEIVED
FEB 26 1980
OIL CON. COM.
DIST. 3

Date Surveyed

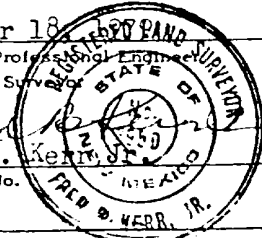
October 18, 1979

Registered Professional Engineer
and/or Land Surveyor

Fred B. Ker...
Fred B. Ker...

Certificate No.

3950



0 330 660 990 1320 1650 1980 2310 2640 2000 1800 1000 500 0

SOUTHLAND ROYALTY COMPANY
DRILLING SCHEDULE
COOPER "B" #1E

1015' FSL & 850' FEL
Section 7, T29N, R11W
San Juan County, New Mexico

Field: Basin Dakota/Blanco Mesa Verde Elevation: 5733' GR

Formation Tops:	Ojo Alamo	1055'	Gallup	5500'
	Fruitland	1625'	Graneros	6305'
	Pictured Cliffs	1890'	Dakota	6430'
	Cliff House	3490'	Total Depth	6630'
	Pt. Lookout	4218'		

Logging Program: IES and GR-Density from surface to Total Depth.

Drilling Program:	Contractor:	Tool Pusher:
	SRC Rep:	SRC (Answ. Svc.) 325-1841
		Dispatch 325-7391

Mud Program: Fresh water to 4200'. Fresh water mud from 4200' to TD. Maintain mud weight of 8.9 to 9.4, viscosity of 35 to 40 sec, water loss of 10 to 12 cc's.

Materials: Casing Program:

<u>Hole Size</u>	<u>Depth</u>	<u>Casing Size</u>	<u>Wt. & Grade</u>
12 1/4"	200'	8 5/8"	24# H-40
7 7/8"	6630'	5 1/2"	15.5# K-55

Float Equipment:

8 5/8" Surface Casing: Pathfinder type "A" guide shoe.

5 1/2" Production Casing: Pathfinder type "A" guide shoe. Self-fill flapper type float collar run 1 joint off bottom. Run 5 Pathfinder bow type stabilizers every other joint above shoe. Run Dowell stage tools at 4600' and 2090'. Run 1 cement basket below and 5 Pathfinder rigid stabilizers above each tool.

Wellhead Equipment:

8 5/8" X 10", 2000# bradenhead with 5 1/2" casing hanger.
10", 2000# X 6", 2000# tubing head and tree.

Cementing:

8 5/8" Surface Casing: 140 sacks (165 cu. ft.) of Class "B" with 1/4# gel flake per sack and 3% CaCl_2 . WOC 12 hours. Test to 600# prior to drilling out. (Volume is 100% excess.)

5 1/2" Production String: STAGE ONE - 165 sacks (245 cu. ft.) of 50/50 Poz with 6% gel, 1/4# gel flake per sack, followed by 50 sacks of neat with 2% CaCl_2 . (Volume is 25% excess to cover top of Gallup.)

STAGE TWO - 195 sacks (288 cu. ft.) of 50/50 Poz with 6% gel followed by 50 sacks of neat with 2% CaCl_2 . (Volume is 50% excess to cover top of Cliff House.)

STAGE THREE - 180 sacks (269 cu. ft.) of 50/50 Poz with 6% gel. (Volume is 50% excess to cover top of Ojo Alamo.)

WOC and circulate between stages as required by well conditions.

L. O. Van Ryan
District Production Manager

BJM/ke



Southland Royalty Company

January 29, 1980

United States Geological Survey
Mr. James Sims
P. O. Box 959
Farmington, NM 87401

Dear Sir:

Enclosed please find a map showing existing roads and planned access roads to Southland Royalty Company's Cooper "B" #1E well.

The locations of tank batteries and flow lines will be on location with well. A burn pit will be provided for disposal of trash. Cuttings, drilling fluid and produced fluids will be put into the reserve pit and properly disposed of depending on amount and type of fluids.

There will be no camps or airstrips.


Also, enclosed is a location layout showing approximate location of rig, pits and pipe racks.

Water supply will be The San Juan River.

The location will be restored according to Bureau of Land Management standards. This work will begin when all related construction is finished.

Mr. Ross Lankford will be Southland Royalty Company's field representative supervising these operations.

Yours truly,


Curtis C. Parsons
District Engineer

CCP/ke



Southland Royalty Company

January 29, 1980

United States Geological Survey
Mr. James Sims
P. O. Box 959
Farmington, NM 87401

RE: Blowout Preventer Plan

Dear Sir:

All drilling and completion rigs will be equipped with 6" or larger double hydraulic blowout preventers and a hydraulic closing unit with steel lines.

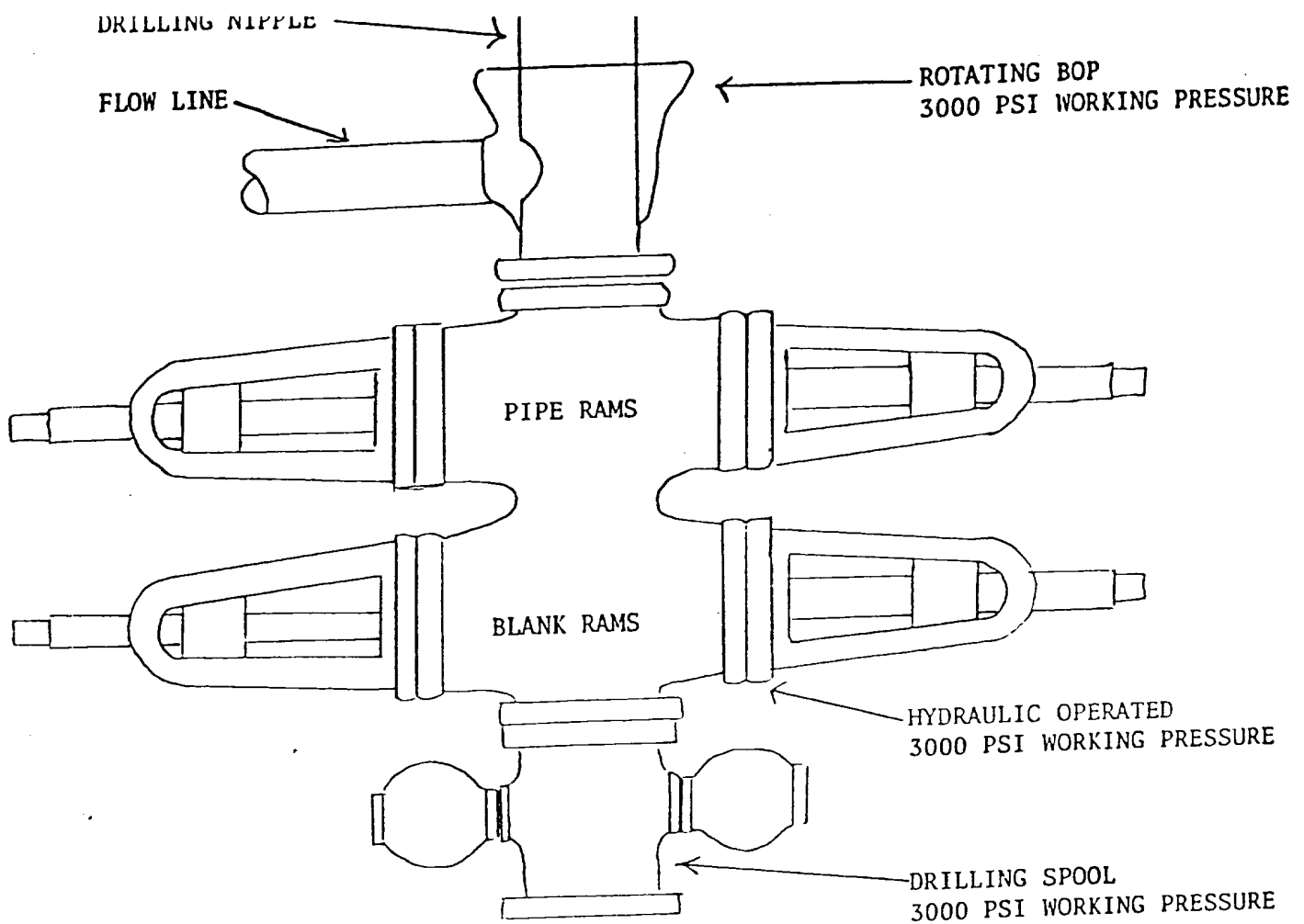
The preventer is 3000# working pressure and 6000# test pressure.

All crews will be thoroughly trained in the operation of this preventer. The preventer will be tested frequently enough to insure proper operation.

Yours truly,

Curtis C. Parsons
District Engineer

OCP/ke



PREVENTERS AND SPOOLS ARE TO HAVE
THROUGH BORE OF 6" - 3000 PSI OR LARGER

COOPER "B" #1E
1015' FSL & 850' FEL
Section 7, T29N, R11W




Southland Royalty Company

United States Geological Survey
Mr. James Sims
P. O. Box 595
Farmington, NM 87401

Dear Sir:

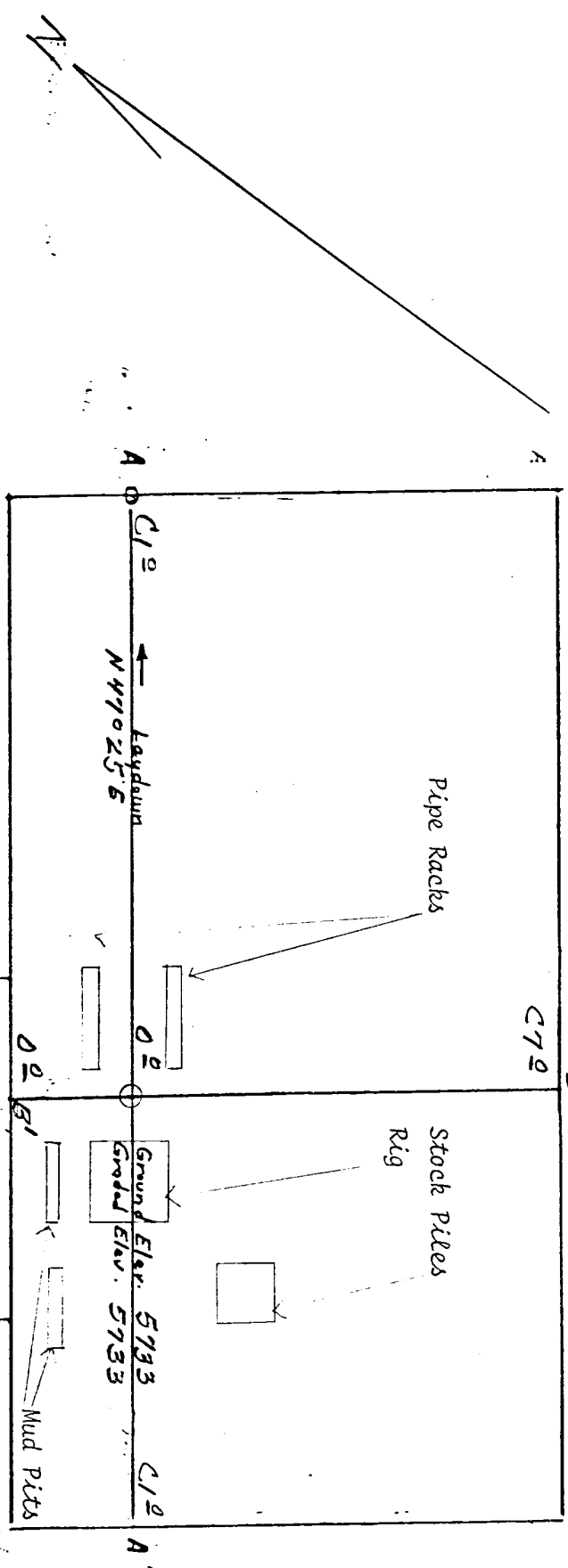
I hereby certify that I, or persons under my direct supervision, have inspected the proposed drillsite and access route; that I am familiar with the conditions which presently exist; that the statements made in this plan are, to the best of my knowledge, true and correct; and, that the work associated with the operations proposed herein will be performed by Southland Royalty Company and its contractors and subcontractors in conformity with this plan and the terms and conditions under which it is approved.

Date: January 29, 1980


L. O. Van Ryan
District Production Manager

LOVR/ke

LOCATION PROFILE FOR
 SOUTHLAND ROYALTY CO. #1E COOPER "B"
 1015' FSL 850' FEL Sec 7-T129N-R11W
 SAN JUAN COUNTY, NEW MEXICO

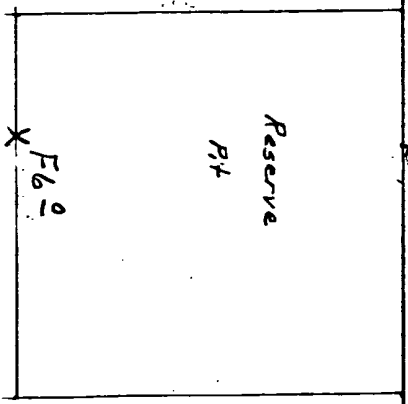


Vert. 1"=40' A-A' Horiz. 1"=100'

5740			
5730			
5720			

B-B' Horiz. 1"=100'

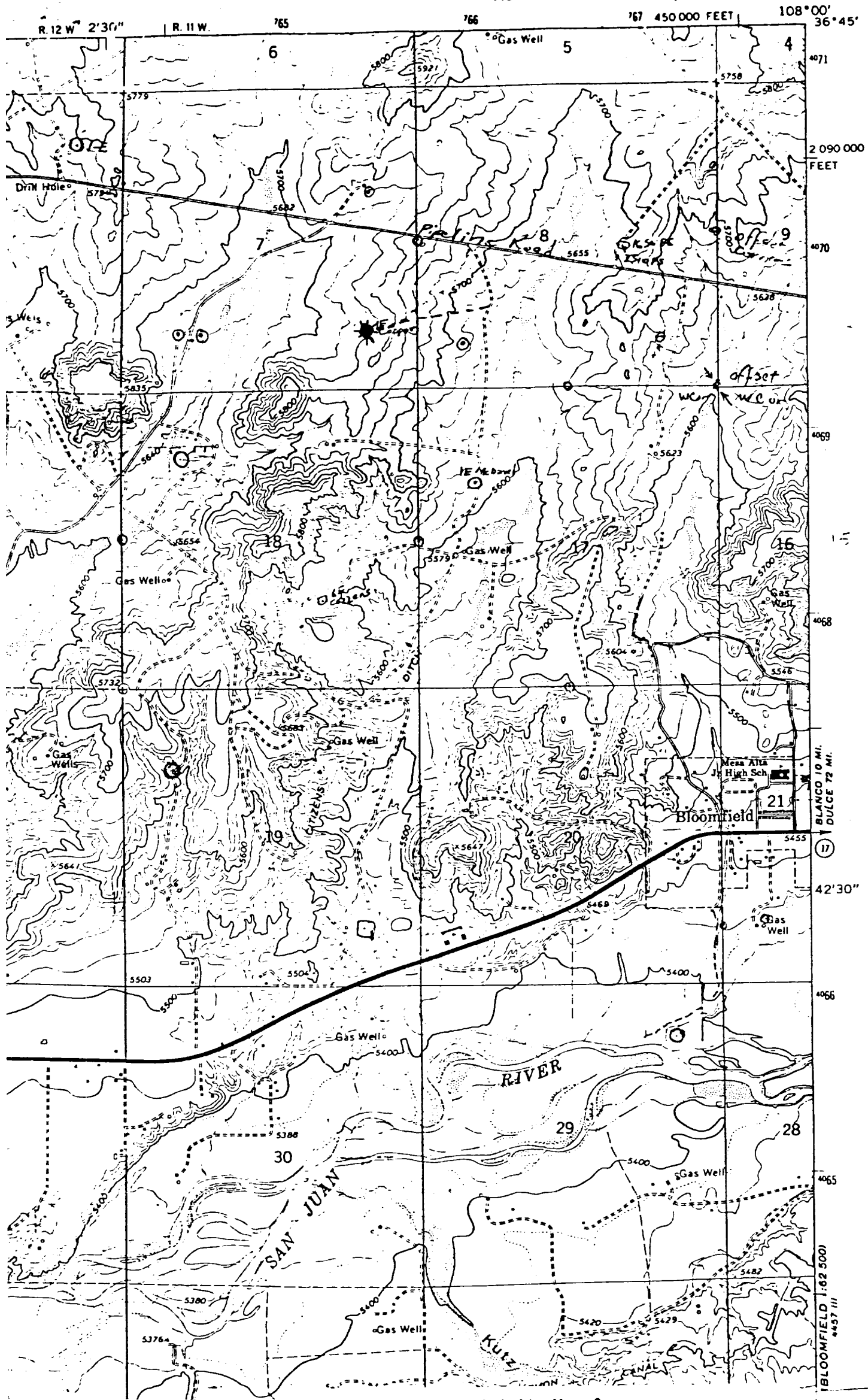
5740			
5730			
5720			



Vert. 1"=40' C-C' Horiz. 1"=100'

D-D' Horiz. 1"=100'

7.5 MINUTE SERIES (TOPOGRAPHIC)



PROPOSED LOCATION ★
 Gas Well EXISTING LOCATIONS ○
 PROPOSED ROAD - - -
 EXISTING ROADS —

Vicinity Map for
 SOUTHLAND ROYALTY CO. #1E Cooper "3"
 1015' FSL 850' FEL Sec 7-T29N-R11W
 SAN JUAN COUNTY, NEW MEXICO