



STATE OF NEW MEXICO
ENERGY AND MINERALS DEPARTMENT
OIL CONSERVATION DIVISION

BRUCE KING
GOVERNOR
LARRY KEHOE
SECRETARY

April 11, 1980

✓ POST OFFICE BOX 2088
STATE LAND OFFICE BUILDING
SANTA FE, NEW MEXICO 87501
(505) 827-2434

Energy Reserves Group
P. O. Box 3280
Casper, Wyoming 82602

Attention: Mr. Curtis J. MacIntyre

Administrative Order NSL-1174

Gentlemen:

Reference is made to your application for approval of a non-standard location for your Gallegos Canyon Unit Well No. 306 to be located 2015 feet from the South line and 830 feet from the East line of Section 19, Township 29 North, Range 12 West, NMPM, Fruitland formation, San Juan County, New Mexico.

By authority granted me under the provisions of Rule 104 F, the above-described unorthodox location is hereby approved.

Sincerely,

JOE D. RAMEY,
Director

JDR/RLS/dr

cc: Oil Conservation Division - Aztec
Oil & Gas Engineering Committee - Hobbs
U. S. Geological Survey - Farmington



B I-19-29N-12W

OIL CONSERVATION COMMISSION
By the DISTRICT

OIL CONSERVATION COMMISSION
BOX 2088
SANTA FE, NEW MEXICO

DATE March 24, 1980

RE: Proposed MC _____
Proposed DHC _____
Proposed NSL x _____
Proposed SWD _____
Proposed WFX _____
Proposed PMX _____

Gentlemen:

I have examined the application dated March 20, 1980
for the Energy Reserve Group G.C.U. # 306 I-19-29N-12w
Operator Lease and Well No. Unit, S-T-R

and my recommendations are as follows:

Aggave

Yours very truly,

Frank S. Day

Energy Reserves Group, Inc.
P.O. Box 3280
Casper, Wyoming 82602
Phone 307 265 7331



March 20, 1980

State of New Mexico
Energy and Minerals Division
Oil Conservation Division
P.O. Box 2088
Santa Fe, New Mexico 87501

Re: Unorthodox Location - Gallegos Canyon Unit Well No. 306

Gentlemen:

Energy Reserves Group, Inc., requests approval of an unorthodox location on its well Gallegos Canyon Unit #306.

The site as proposed is located 2,015' FSL and 830' FEL Sec. 19-T29N-R12W. The purpose of this request is for topographic reasons. The location lies on top of a hill between two existing wells (ERG's GCU #300 on the West and Amoco's GCU #110 E on the East). Very little additional surface disturbance will be required. It also lies due North of the Bloomfield highway which would prohibit moving the location South. The land South of the highway in Sec 19 is predominantly private. ERG would expect considerable difficulty and expense obtaining landowner approval to drill in this area.

Amoco Production Company is the operator of the Gallegos Canyon Unit with Energy Reserves Group, Inc., as the sub-operator of the Pictured Cliffs with negotiations underway to obtain Fruitland operating rights as well. See attached plat of the proposed well location.

Amoco Production Company has been notified by certified mail this date.

If any additional information is required please advise.

Very truly yours,
ENERGY RESERVES GROUP, INC.

Curtis J. MacIntyre
Curtis J. MacIntyre
Production Engineer
Rocky Mountain District

CJM:bac

Enclosure



OIL CONSERVATION DIVISION

STATE OF NEW MEXICO
ENERGY AND MINERALS DEPARTMENTP. O. BOX 2088
SANTA FE, NEW MEXICO 87501Form C-102
Revised 10-1-78

All distances must be from the outer boundaries of the Section

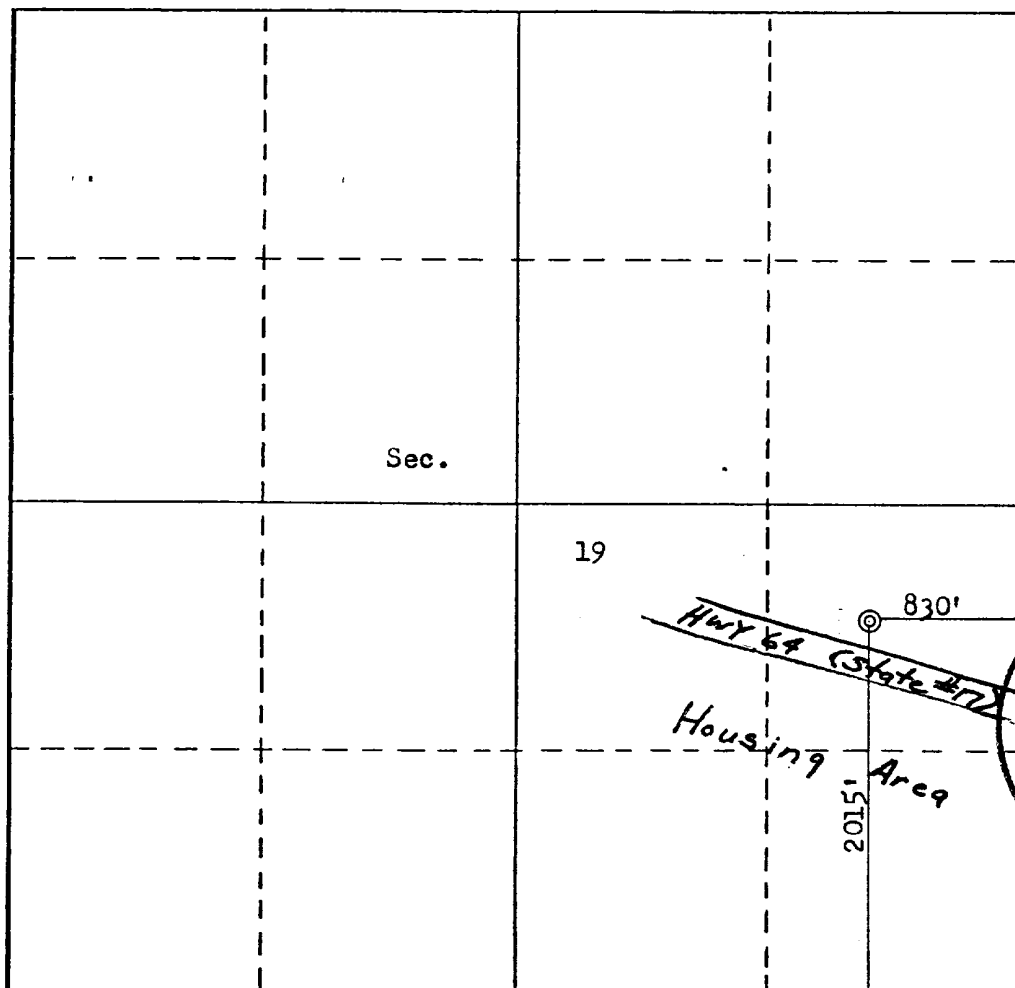
Operator ENERGY RESERVES GROUP			Lease GALLEGOS CANYON UNIT		Well No. 306
Unit Letter I	Section 19	Township 29N	Range 12W	County San Juan	
Actual Footage Location of Well: 2015 feet from the South line and 830 feet from the East line					
Ground Level Elev. 5415	Producing Formation Fruitland(Gas) Mesa Verde		Pool Disposal		Dedicated Acreage: 160 Acres

1. Outline the acreage dedicated to the subject well by colored pencil or hachure marks on the plat below.
2. If more than one lease is dedicated to the well, outline each and identify the ownership thereof (both as to working interest and royalty).
3. If more than one lease of different ownership is dedicated to the well, have the interests of all owners been consolidated by communitization, unitization, force-pooling, etc?

☐ Yes ☐ No If answer is "yes," type of consolidation _____

If answer is "no," list the owners and tract descriptions which have actually been consolidated. (Use reverse side of this form if necessary.) _____

No allowable will be assigned to the well until all interests have been consolidated (by communitization, unitization, forced-pooling, or otherwise) or until a non-standard unit, eliminating such interests, has been approved by the Commission.



CERTIFICATION

I hereby certify that the information contained herein is true and complete to the best of my knowledge and belief.

Name
Curt Mac Intyre
Position
Production Engineer
Company
Energy Reserves Group
Date
March 11, 1980

I hereby certify that the well location shown on this plat was plotted from field notes of actual surveys made by me or under my supervision, and that the same is true and correct to the best of my knowledge and belief.

RECEIVED
MAR 24 1980
OIL CON. COM.

Date Surveyed
March 11, 1980
Registered Professional Engineer
and/or Land Surveyor
Fred B. Kerr, Jr.
Certification No.
3950

FARMINGTON SOUTH QUADRANGL
NEW MEXICO-SAN JUAN CO.
7.5 MINUTE SERIES (TOPOGRAPHIC)

UNITED STATES
DEPARTMENT OF THE INTERIOR
GEOLOGICAL SURVEY

