



STATE OF NEW MEXICO
ENERGY AND MINERALS DEPARTMENT
OIL CONSERVATION DIVISION

December 29, 1980

BRUCE KING
GOVERNOR
LARRY KEHOE
SECRETARY

POST OFFICE BOX 2088
STATE LAND OFFICE BUILDING
SANTA FE, NEW MEXICO 87501
(505) 827-2434

Dugan Production Corporation
P. O. Box 208
Farmington, New Mexico 87401

Attention: Mr. Jerome P. McHugh, Jr.

Administrative Order NSL-1294

Gentlemen:

Reference is made to your application on behalf of Pioneer Production Corp. for a non-standard location for their Nye Well No. 1E located 1980 feet from the North line and 610 feet from the West line of Section 32, Township 29 North, Range 11 West, NMPM, Basin-Dakota Pool, San Juan County, New Mexico.

By authority granted me under the provisions of Rule 3 of Order No. R-1670, the above-described unorthodox location is hereby approved.

Sincerely,

JOE D. RAMEY,
Director

JDR/RLS/dr

cc: Oil Conservation Division - Aztec
Oil & Gas Engineering Committee - Hobbs
U. S. Geological Survey - Farmington



OIL CONSERVATION COMMISSION
Alto DISTRICT

OIL CONSERVATION COMMISSION
BOX 2088
SANTA FE, NEW MEXICO

DATE Dec. 15, 1980

RE: Proposed MC _____
Proposed DHC _____
Proposed NSL a _____
Proposed SWD _____
Proposed WFX _____
Proposed PMX _____

Gentlemen:

I have examined the application dated Dec. 5, 1980
for the Pioneer Prod. Corp. Nye #1E E-32-29N-11W
Operator Lease and Well No. Unit, S-T-R

and my recommendations are as follows:

Approve

Yours very truly,

Frank J. Lang

dugan production corp.

December 3, 1980

Frank Chavez
New Mexico Oil Conservation Division
1000 Rio Brazos Rd.
Aztec, NM 87410

James F. Sims
U. S. Geological Survey
P. O. Box 959
Farmington, NM 87401

Re: Application for Administrative Approval of
Unorthodox Location for Pioneer Production Corporation's
Nye #1E Well located 1980' FNL - 610' FWL, Sec 32 T29N R11W,
San Juan County, NM

Dear Sir:

Enclosed are copies of the instruments filed with the New Mexico
Oil Conservation Division regarding the Application for Administrative
Approval of the Unorthodox Location for the above-referenced well.

Sincerely,

Jerome P. McHugh, Jr.
Jerome P. McHugh, Jr.
Agent for Applicant

fp

Enclosures



dugan production corp.

December 3, 1980

Joe D. Ramey
Division Director
New Mexico Oil Conservation Division
P. O. Box 2088
Santa Fe, NM 87501

Re: Application for Administrative Approval of
Unorthodox Location for Pioneer Production Corporation's
Nye #1E Well located 1980' FNL - 610' FWL, Sec 32 T29N R11W,
San Juan County, NM

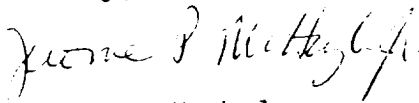
Dear Mr. Ramey:

Enclosed please find three copies of the Application for Administrative Approval of the Unorthodox Location for the above-referenced well, which application includes a plat showing the ownership of all leases offsetting this spacing unit for which the unorthodox location is sought, and all wells completed thereon, and a plat showing the existent topographical conditions of the well location. Also enclosed are copies of the dedicated acreage plat.

Copies of this application are being submitted to all offsetting operators by certified mail with a request that they furnish your office with a waiver of objection.

Please advise if you need further information.

Sincerely,



Jerome P. McHugh Jr.
Agent for Applicant

fp

Enclosures

Joe D. Ramey
December 3, 1980
Page 2

Pioneer Production Corp.
Nye #1E

cc: Frank Chavez
New Mexico Oil Conservation Division
1000 Rio Brazos Road
Aztec, NM 87410

James Sims
U.S. Geological Survey
P O Box 959
Farmington, NM 87401

Supron Energy Corporation
P O Box 808
Farmington, NM 87401

Southland Royalty Company
P O Drawer 570
Farmington, NM 87401

1

APPLICATION FOR ADMINISTRATIVE APPROVAL
OF UNORTHODOX LOCATION

Applicant: Pioneer Production Corp.
P O Box 208
Farmington, NM 87401

Name of Well: Nye #1E

Land Dedicated to the Well: Township 29 North, Range 11 West
Sec 32 NW/4
San Juan County, NM

Proposed Unorthodox Location: T29N R11W Sec 32
1980' FNL - 610' FWL (Unit Letter E)
San Juan County, NM

Reason for Unorthodox Location: Topographic reasons identified by
Pioneer Production Corp. Surveys
indicate that an orthodox location
would be placed in Kutz Canyon Wash.

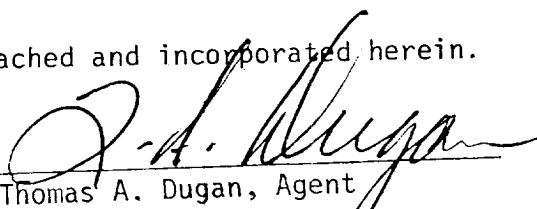
Offsetting Leases and Operators
and Well Completions: See Exhibit "A" hereto attached and
incorporated herein by reference.

Existent Topographical Conditions: See Exhibit "B" hereto attached and
incorporated herein by reference.

New Mexico Oil Conservation Division
Rule Authorizing Application: Rule 104F

See Exhibit "C" (Surveyor's Plat) hereto attached and incorporated herein.

BY:


Thomas A. Dugan, Agent

hereby acknowledges receipt of the
Application for Administrative Approval of Unorthodox Location filed by
Pioneer Production Corp.
Pioneer Production Corporation's Application for Administrative
Approval of Unorthodox Location for their Nye #1E
Well as proposed herein.

BY: _____

DATE: _____

EXHIBIT "A"

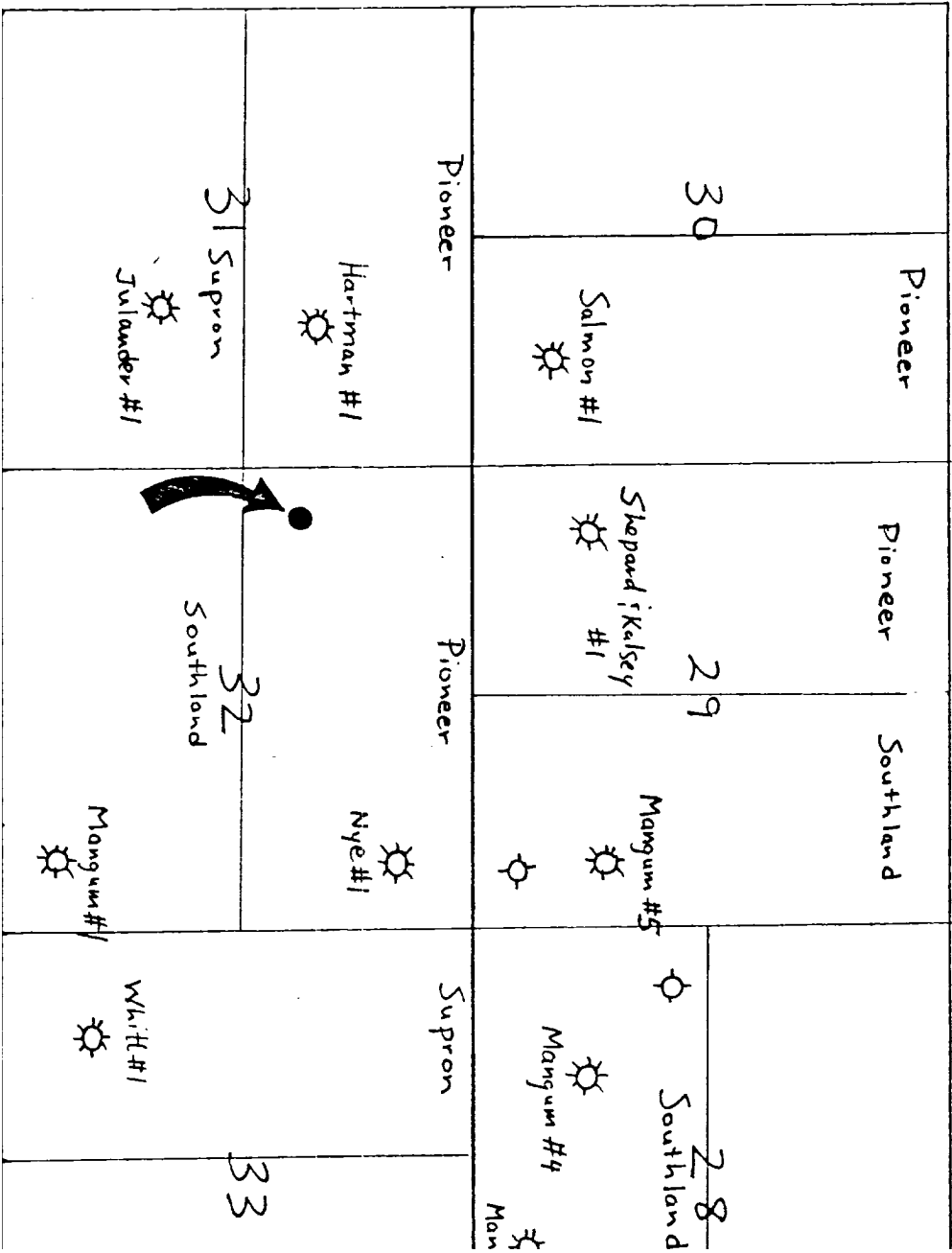
PIONEER PRODUCTION CORP.
Nye #1E

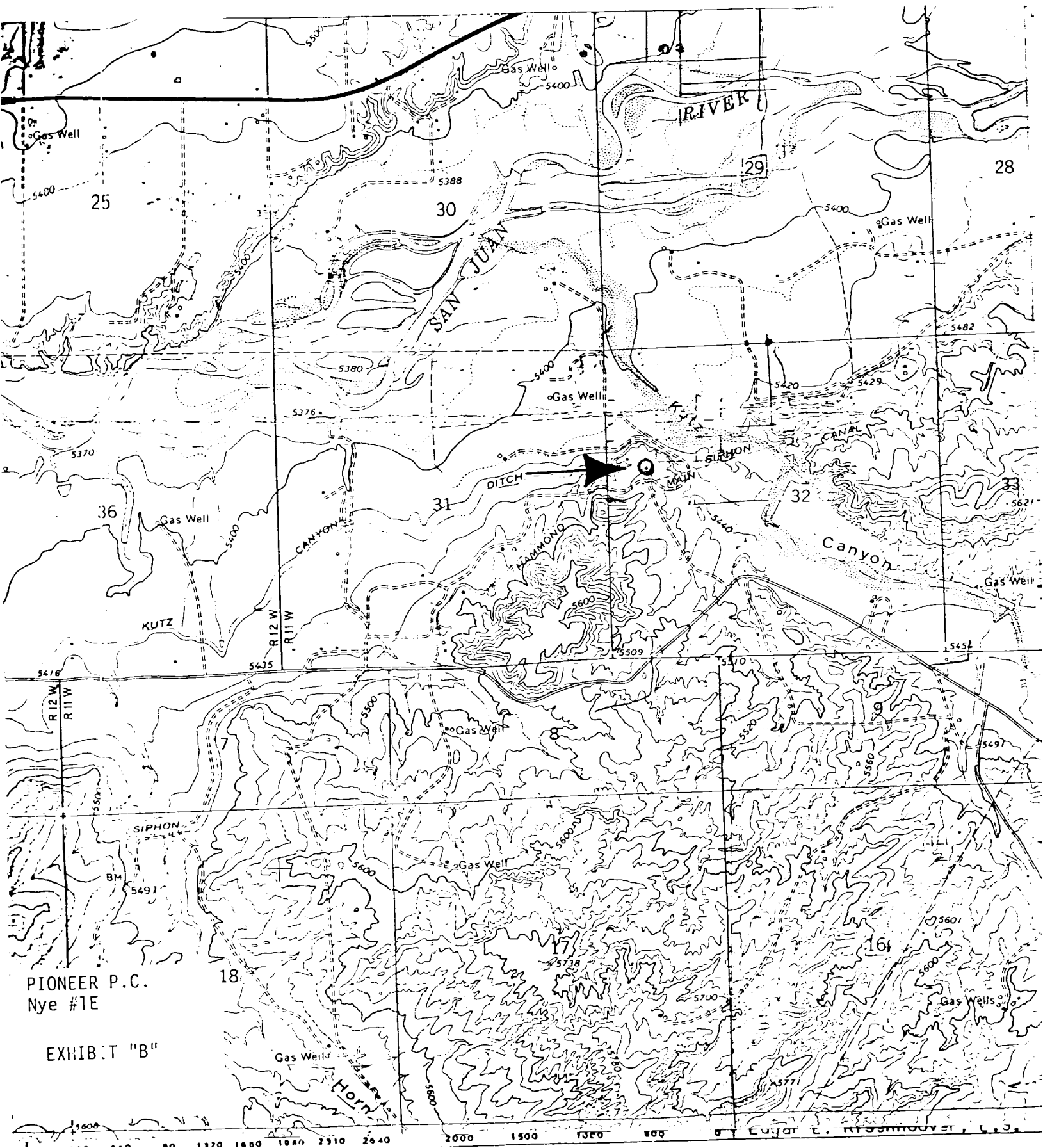
1. Supron Energy Corporation
T29N R11W Sec 33 W/2
T29N R11W Sec 31 S/2

2. Southland Royalty Co.
T29N R11W Sec 32 S/2
T29N R11W Sec 29 E/2
T29N R11W Sec 28 S/2

T
29
N

R11W





PIONEER P.C.
Nye #1E

EXHIBIT "B"

ENJOY E. RYANHOOD ST. L.J.