

UNITED STATES  
DEPARTMENT OF THE INTERIOR  
GEOLOGICAL SURVEY

## APPLICATION FOR PERMIT TO DRILL, DEEPEN, OR PLUG BACK

## 1a. TYPE OF WORK

DRILL ☒DEEPEN ☐PLUG BACK ☐

## b. TYPE OF WELL

OIL  
WELL ☐GAS  
WELL ☒

OTHER

SINGLE  
ZONE ☒MULTIPLE  
ZONE ☐

## 2. NAME OF OPERATOR

Blackwood &amp; Nichols Co., Ltd.

## 3. ADDRESS OF OPERATOR

P.O. Box 1237, Durango, Colorado 81301

## 4. LOCATION OF WELL (Report location clearly and in accordance with any State requirements.)\*

At surface

1580' F/SL - 1290' F/WL

At proposed prod. zone

Same

## 14. DISTANCE IN MILES AND DIRECTION FROM NEAREST TOWN OR POST OFFICE\*

## 15. DISTANCE FROM PROPOSED\*

LOCATION TO NEAREST  
PROPERTY OR LEASE LINE, FT.  
(Also to nearest drlg. unit line, if any)18. DISTANCE FROM PROPOSED LOCATION\*  
TO NEAREST WELL, DRILLING, COMPLETED,  
OR APPLIED FOR, ON THIS LEASE, FT.

## 21. ELEVATIONS (Show whether DF, RT, GR, etc.)

6144' GL

## 23.

## PROPOSED CASING AND CEMENTING PROGRAM

SIZE OF HOLE	SIZE OF CASING	WEIGHT PER FOOT	SETTING DEPTH	QUANTITY OF CEMENT
13 3/4"	9 5/8"	36.00#	300'	Circulate
8 3/4"	7"	23.00#	3490'	Two stage to surface
6 1/4"	4 1/2" Liner	10.50#	5720'	Circulate to top of liner

We propose to perforate the Mesaverde Zone and sand-water fracture with 200,000 gals water and 200,000 lbs. sand in two stages. Estimated tops: Fruitland 2760', Lewis 3315', Cliffhouse 4855', Point Lookout 5270', Mancos 5404'. A 3000 PSI WP; Series 10" - 900 - adapted to Series 10" - 600 and 6" - 600 hydraulic blowout preventer equipped with blind and necessary pipe rams will be used with adequate kill and bleed off lines. A mud of sufficient weight to control the Fruitland will be used, well to be drilled with gas below 7" casing.

Compensated Density Gamma-Neutron logs will be run in open hole.

Blow out preventers will be tested every trip.

IN ABOVE SPACE DESCRIBE PROPOSED PROGRAM: If proposal is to deepen or plug back, give data on present productive zone and proposed new productive zone. If proposal is to drill or deepen directionally, give pertinent data on subsurface locations and measured and true vertical depths. Give blowout preventer program, if any.

24. DeJasso LoosTITLE Manager

(This space for Federal or State office use)

PERMIT NO.

APPROVED BY

CONDITIONS OF APPROVAL

DRILLING OPERATIONS AUTHORIZED ARE  
SUBJECT TO COMPLIANCE WITH ATTACHED  
"GENERAL REQUIREMENTS"

APPROVAL DATE JAN 23 1980  
TITLE JAMES F. SIMS  
DISTRICT ENGINEER

JAN 23 1980

U. S. GEOLOGICAL SURVEY  
DURANGO, CO.

\*See Instructions On Reverse Side

NEW MEXICO OIL CONSERVATION COMMISSION  
WELL LOCATION AND ACREAGE DEDICATION PLAT

Form C-102  
Supersedes C-128  
Effective 1-1-65

All distances must be from the outer boundaries of the Section.

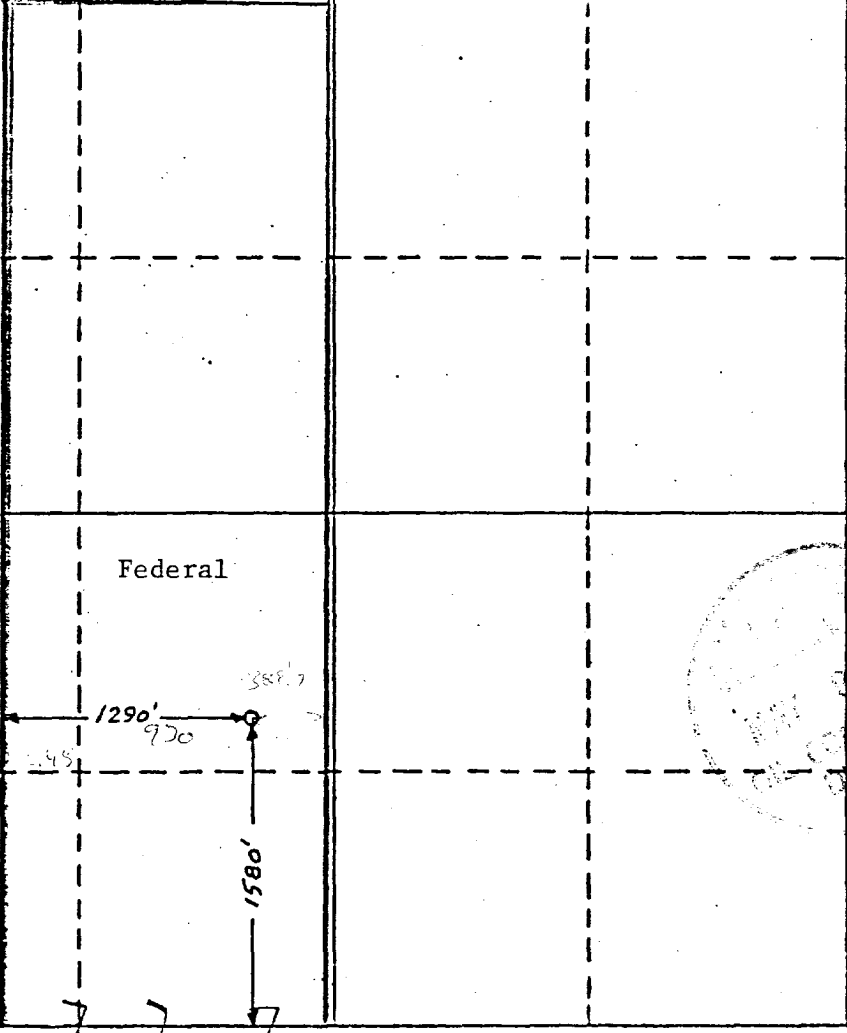
Operator BLACKWOOD & NICHOLS			Lease NORTHEAST BLANCO UNIT		Well No. 34-A
Unit Letter K	Section 18	Township 30 N.	Range 7W.N.M.P.M.	County SAN JUAN	
Actual Footage Location of Well: 1580 feet from the south line and 1290 feet from the west line					
Ground Level Elev: 6144 U.G.		Producing Formation Mesaverde	Pool Blanco-Mesaverde	Dedicated Acreage: N/307.44 Acres	

1. Outline the acreage dedicated to the subject well by colored pencil or hachure marks on the plat below.
2. If more than one lease is dedicated to the well, outline each and identify the ownership thereof (both as to working interest and royalty).
3. If more than one lease of different ownership is dedicated to the well, have the interests of all owners been consolidated by communitization, unitization, force-pooling, etc?

☒ Yes ☐ No If answer is "yes," type of consolidation Unitization

If answer is "no," list the owners and tract descriptions which have actually been consolidated. (Use reverse side of this form if necessary.)

No allowable will be assigned to the well until all interests have been consolidated (by communitization, unitization, forced-pooling, or otherwise) or until a non-standard unit, eliminating such interests, has been approved by the Commission.

	<b>CERTIFICATION</b>
	I hereby certify that the information contained herein is true and complete to the best of my knowledge and belief.
	DeLasso Loos
	Name <i>DeLasso Loos</i>
	Position District Manager
	Company Blackwood & Nichols Co., Ltd
Date January 21, 1980	
	I hereby certify that the well location shown on this plat was plotted from field notes of actual surveys made by me or under my supervision, and that the same is true and correct to the best of my knowledge and belief.
	Date Surveyed Dec. 3, 1979
	Registered Professional Engineer and/or Land Surveyor <i>John A. Kroeger</i> John A. Kroeger, PLS
	Certificate No. 1941

**BLACKWOOD & NICHOLS Co., LTD.**

P. O. BOX 1237

DURANGO, COLORADO 81301

(303) 247-0728

January 22, 1980

United States Geological Survey  
Federal Building  
701 Camino Del Rio  
Durango, Colorado 81301

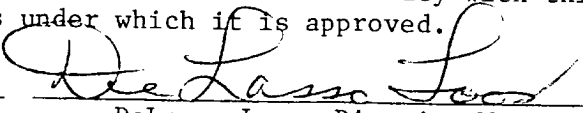
Gentlemen:

Blackwood & Nichols Co., Ltd., as operator of the Northeast Blanco Unit, proposes to drill the Northeast Blanco Unit Well No. 34A as an infill well located in the SW/4, Sec. 18-31N-7W, San Juan County, New Mexico. The well will be completed in the Mesaverde Zone.

Attached are maps and other data pertinent to the Development Plan for Surface Use.

- I. Existing roads: See attached U.S.G.S. topographic map.
- II, III, IV, VI and IX: See attached maps.
- V. Water will be hauled by truck transport from the Navajo Lake, approximately four miles southwest of the location.
- VII. Waste material will be placed in a reserve pit and later buried or burned.
- VIII. Camp or airstrip will not be necessary.
- IX. See attached map of well site layout. (Not to scale)
- X. Upon completion the location will be leveled to its original state. The access road will remain. The location will be seeded, as per the Bureau of Land Management requirements.
- XI. The location is relatively level and covered with Cedar and Pinon trees which will be disposed of as per the Bureau of Land Management requirements; an archaeological clearance will be obtained.
- XII. DeLasso Loos, 1032½ Main Street, Durango, Colorado 81301; Telephones: Office: 303-247-0728; Home: 303-247-2345.
- XIII. I hereby certify that I, or persons under my direct supervision have inspected the proposed drill site and access route; that I am familiar with the conditions which presently exist; that the statements made in this plan are, to the best of my knowledge, true and correct; and, that the work associated with the operations proposed herein will be performed by Blackwood & Nichols Co., Ltd., and its contractors and subcontractors in conformity with this plan and terms and conditions under which it is approved.

Date 1-22-80

  
DeLasso Loos, District Manager

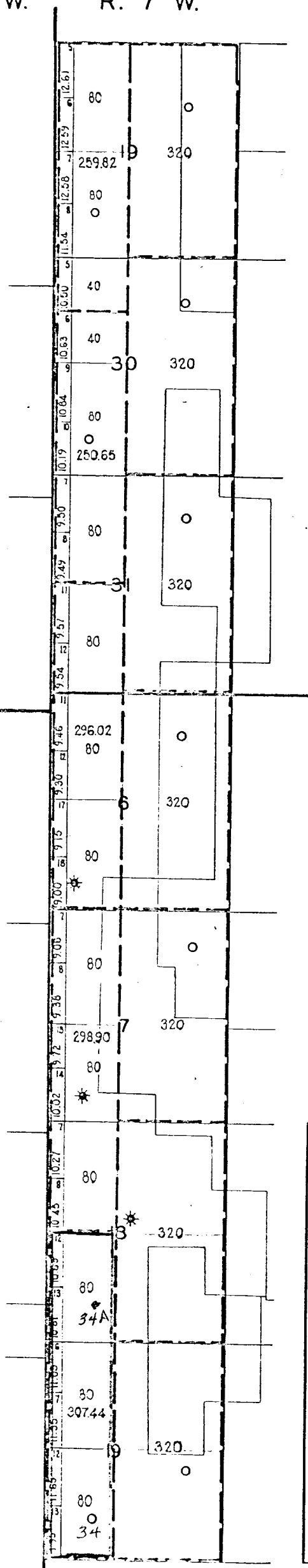
DL:lr  
Attachments

R. 8 W.

R. 7 W.

T.  
31  
N.

T.  
30  
N.



—PORTION OF—  
NORTHEAST  
BLANCO  
UNIT

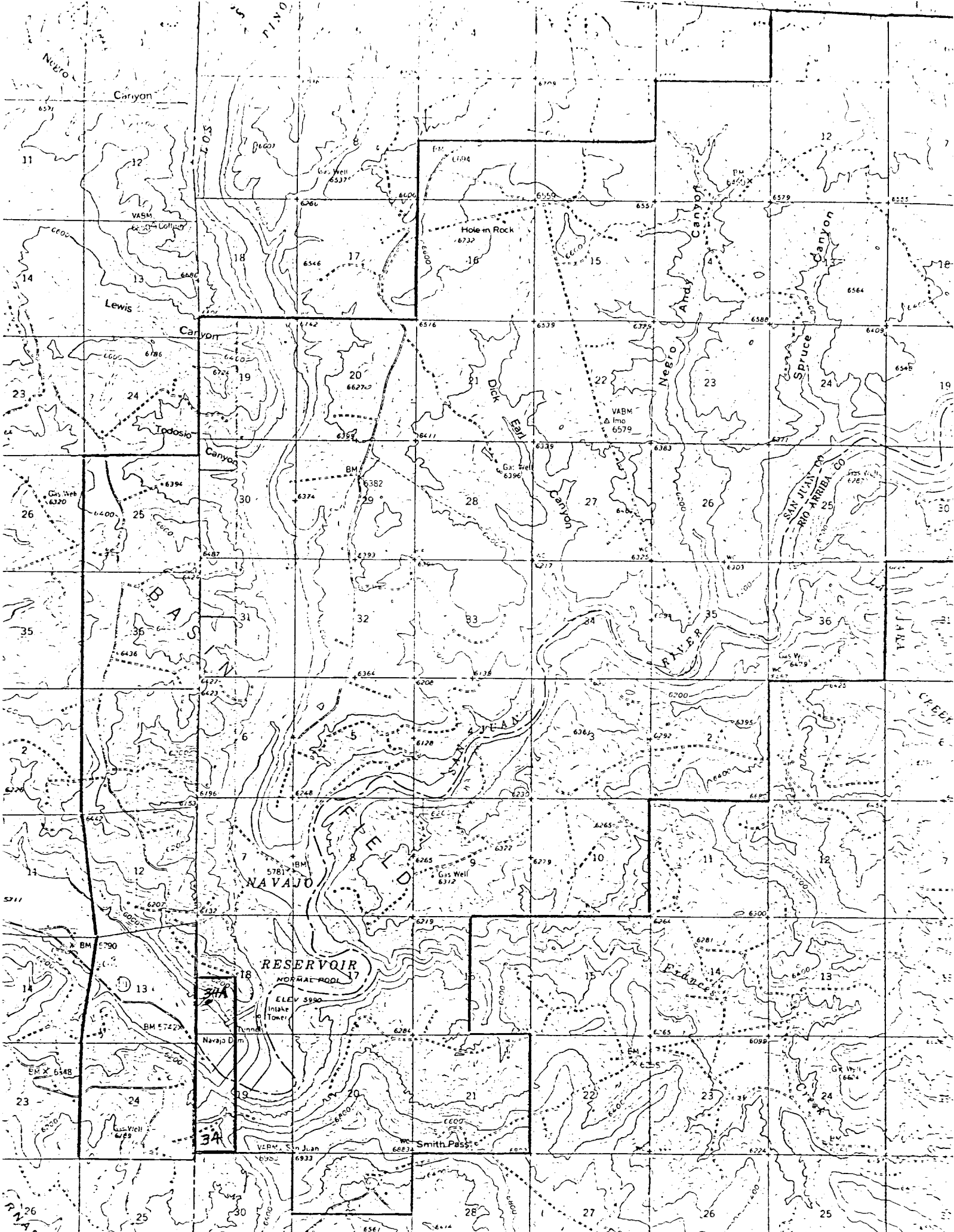
SAN JUAN & RIO ARriba  
COUNTIES

NEW MEXICO

- Completed Oil Well
- Location or Drilling Well
- ◇ Dry Hole
- ⊠ Abandoned Location
- ★ Gas Well

SCALE: 1" = 3000'

□ DAM SITE



Blackwood & Nichols Co., Ltd.  
Northeast Blanco Unit Well No. 34A  
1580' F/SL - 1290' F/WL K-18-30N-7W  
San Juan County, New Mexico

