

RECEIVED

APR 14 1980

UNITED STATES
DEPARTMENT OF THE INTERIOR

GEOLOGICAL SURVEY

APPLICATION FOR PERMIT TO DRILL, DEEPEN, OR PLUG BACK

a. TYPE OF WORK
FARMINGTON, N. M.
DRILL ☒ DEEPEN ☐ PLUG BACK ☐

b. TYPE OF WELL

OIL WELL ☐ GAS WELL ☒ OTHER ☐

SINGLE ZONE ☒

MULTIPLE ZONE ☐

2. NAME OF OPERATOR

SUPRON ENERGY CORPORATION

3. ADDRESS OF OPERATOR

P.O. Box 808, Farmington, New Mexico 87401

4. LOCATION OF WELL (Report location clearly and in accordance with any State requirements.)*

At surface 1760 ft./South line and 1080 ft./East line

At proposed prod. zone

Same as above.

14. DISTANCE IN MILES AND DIRECTION FROM NEAREST TOWN OR POST OFFICE*

4 miles southeast of Bloomfield, New Mexico.

15. DISTANCE FROM PROPOSED* LOCATION TO NEAREST PROPERTY OR LEASE LINE, FT. (Also to nearest drg. unit line, if any) 1080 ft. 1080 ft.

18. DISTANCE FROM PROPOSED LOCATION* TO NEAREST WELL, DRILLING, COMPLETED, OR APPLIED FOR, ON THIS LEASE, FT. 650 ft.

16. NO. OF ACRES IN LEASE

560

19. PROPOSED DEPTH

6600

17. NO. OF ACRES ASSIGNED TO THIS WELL

S 320 acres

20. ROTARY OR CABLE TOOLS

Rotary

21. ELEVATIONS (Show whether DF, RT, GR, etc.)

5617 Gr.

22. APPROX. DATE WORK WILL START*

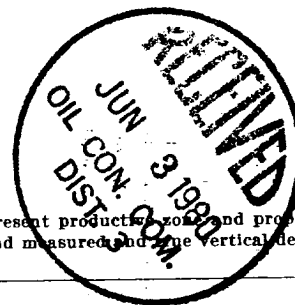
July 1, 1980

23. PROPOSED CASING AND CEMENTING PROGRAM

SIZE OF HOLE	SIZE OF CASING	WEIGHT PER FOOT	SETTING DEPTH	QUANTITY OF CEMENT
12-1/4"	8-5/8"	24.00	250	125 SX
7-7/8"	5-1/2"	15.50	6600	700 SX

We propose to drill this well through the Dakota formation at approximately 670 ft. using mud as a circulating medium. Surface pipe will be set as described above and cement will be circulated around the casing. After the well is drilled 5-1/2" csq. will be run and cemented in 3 stages as follows: 1st stage approximately 200 sx of 50-50 POZ mix, 2nd stage approximately 200 sx of 50-50 POZ mix followed by 50 sx of class "B" and the 3rd stage approximately 200 sx of 65-35 followed by 50 sx of class "B". After cementing the Dakota zone will be perforated, fraced and cleaned up. Tubing will be run and the wellhead will be nipped down.

you is checked



IN ABOVE SPACE DESCRIBE PROPOSED PROGRAM: If proposal is to deepen or plug back, give data on present production zone and proposed new productive zone. If proposal is to drill or deepen directionally, give pertinent data on subsurface locations and measured and true vertical depths. Give blowout preventer program, if any.

24.

SIGNED

Rudy D. Motto

TITLE Area Superintendent

DATE April 10, 1980

(This space for Federal or State office use)

PERMIT NO.

APPROVAL DATE

APPROVED BY

TITLE

DATE

CONDITIONS OF APPROVAL, IF ANY:

ok back

NMCCC

James J. Leno

All distances must be from the outer boundaries of the Section.

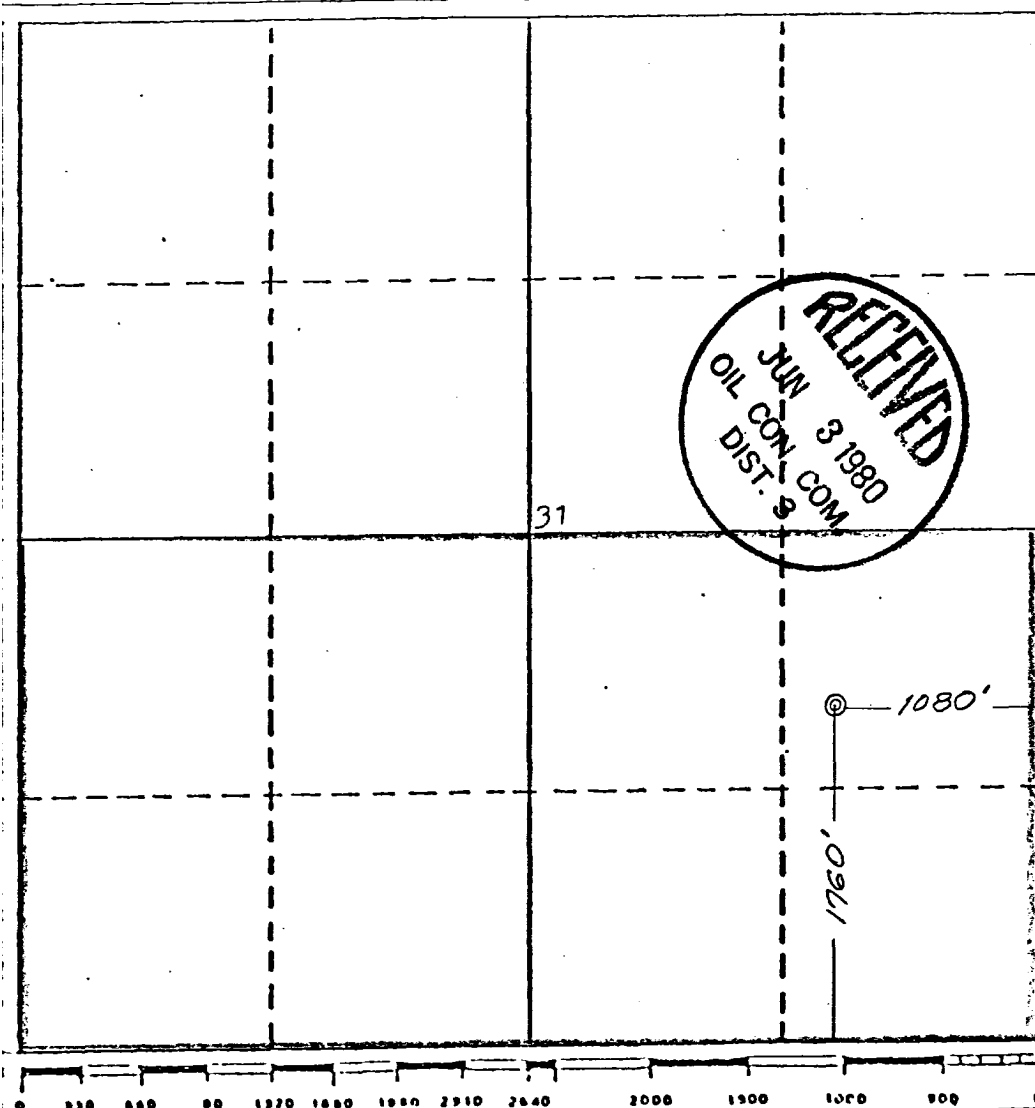
Operator SUPRON ENERGY CORPORATION		Lease REID "B"		Well No. 1 E
Unit Letter I	Section 31	Township 29 NORTH	Range 10 WEST	County SAN JUAN
Actual Footage Location of Well: 1760 feet from the SOUTH line and 1080 feet from the EAST line				
Ground Level Elev. 5617	Producing Formation Dakota	Pool Basin	Dedicated Acreage 5 3/4 320 Acres	

1. Outline the acreage dedicated to the subject well by colored pencil or hatchure marks on the plat below.
2. If more than one lease is dedicated to the well, outline each and identify the ownership thereof (both as to working interest and royalty).
3. If more than one lease of different ownership is dedicated to the well, have the interests of all owners been consolidated by communitization, unitization, force-pooling, etc?

☐ Yes ☐ No If answer is "yes," type of consolidation _____

If answer is "no," list the owners and tract descriptions which have actually been consolidated. (Use reverse side of this form if necessary.) _____

No allowable will be assigned to the well until all interests have been consolidated (by communitization, unitization, forced-pooling, or otherwise) or until a non-standard unit, eliminating such interests, has been approved by the Division.



CERTIFICATION

I hereby certify that the information contained herein is true and complete to the best of my knowledge and belief.

Ludy D. Mott
Name

Area Superintendent

Position

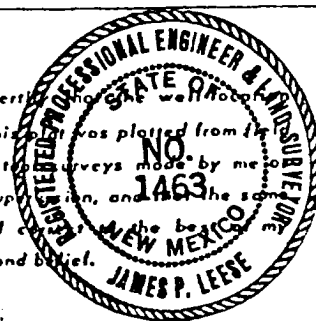
Supron Energy Corporation

Company

March 7, 1980

Date

I hereby certify that the information shown on this plat was plotted from the notes of actual surveys made by me or under my supervision, and that the same is true and correct to the best of my knowledge and belief.



Date Surveyed

February 19, 1980

Registered Professional Engineer
and/or Land Surveyor

James P. Leese
James P. Leese

Certificate No.

1463

SUPRON ENERGY CORPORATION

Reid "B" No. 1-E
NW ¼ Section 31, T-29N, R-10W, N.M.P.M.
San Juan County, New Mexico

The following attachments are included with this application:

1. Topographical map showing the proposed location and access road.
2. Planned access road will be 20 feet wide and 50 feet long approaching the location from the east. No extra material will be used and the facility will be installed to meet the requirements of NTL-6.
3. Map showing existing producing facilities and access road.
4. Location of surface equipment.
5. Drilling and completion water will be obtained from the San Juan River.
6. All pits will be fenced and constructed in such a way as to prevent litter on the location.
7. We will dispose of all waste by placing it in the reserve pit and burying it when the well is completed.
8. There will be no camp at or near the site.
9. There will be no air strip.
10. A plat is attached showing the location of the rig, mud tanks, reserve pit, burn pit and ect.
11. A letter of certification is attached. The operators representative for compliance purposes is Rudy D. Motto, Area Superintendent, P.O. Box 808, Farmington, New Mexico 87401. Phone (505) 355-3587.
12. After the well is completed, the location will be cleaned up and bladed. The reserve pit will be allowed to dry, then be filled and restored to its natural state.
13. The soil is silty sand and clay with the principal vegetation being juniper, snakewood, sagebrush, indian ricegrass, alkali sacaton, 4-wing saltbush, greasewood, shadscale, galleta, prickley pear and canigre.



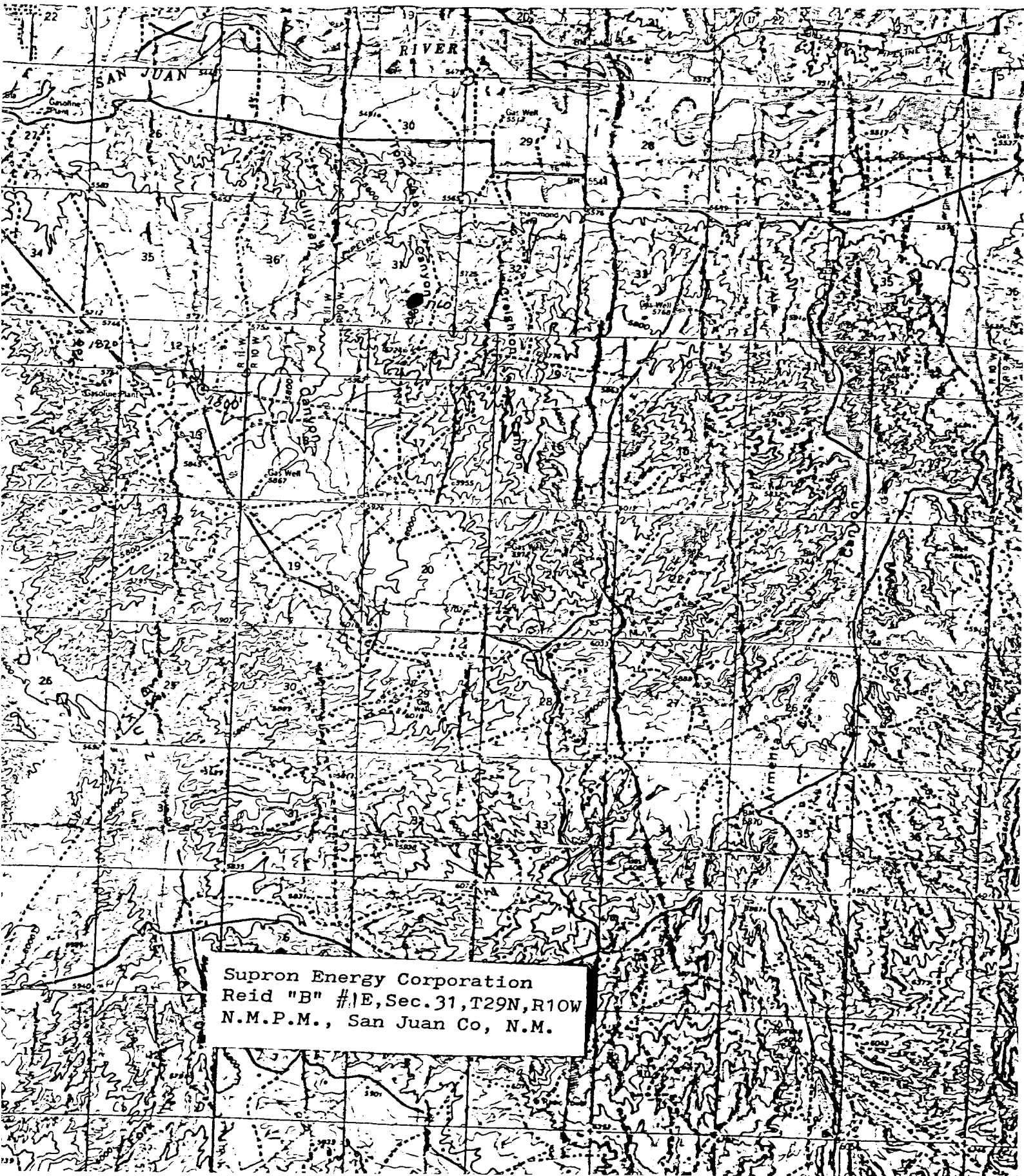
SUPRON ENERGY CORPORATION

Reid "B" No. 1-E

NW ¼ Section 31, T-29N, R-10W, N.M.P.M.

San Juan County, New Mexico

1. The geologic name of the surface formation is "Wasatch".
2. The estimated tops of important geologic markers are:
 - A. Base of the Ojo Alamo 450 ft.
 - B. Top of the Fruitland 1550 ft.
 - C. Top of the Pictured Cliffs 1760 ft.
 - D. Top of the Chacra 2760 ft.
 - E. Top of the Cliff House 3350 ft.
 - F. Base of the Greenhorn 6130 ft.
 - G. Top of the Dakota 6250 ft.
3. The estimated depths at which water, oil or mineral bearing formations are expected to be encountered are:
 - A. Base of the Ojo Alamo 400 ft. Water
 - B. Top of the Fruitland 1550 ft. Water
 - C. Top of the Pictured Cliffs 1760 ft. Gas
 - D. Top of the Chacra 2760 ft. Gas
 - E. Top of the Cliff House 3350 ft. Gas
 - F. Top of the Dakota 6250 ft. Gas
4. The casing program is shown on form 9-333C and all casing is new.
5. The lessee's pressure control equipment schematics are attached, along with minimum specifications, testing procedures and frequencies.
6. The type, estimated volumes, and characteristics of the circulating medium are as follows:
 - A. 0 - 250 ft. Natural Mud
 - B. 250 - 6500 ft. Permaloid non dispersed mud containing approximately 200 sx of gel, 80 sx of permaloid and 20 sx of CMC.
7. The auxiliary equipment to be used will be floats at the bit and a sub on the floor with a full opening valve to be stabbed into the drill pipe when the kelly is not in the string.
8. This well is in an area which is heavily developed therefore we will not have a testing or coring program. The logging program is as follows:
 - A. E.S. Induction
 - B. Gamma Ray Density
 - C. Gamma Ray Correlation
 - D. Cement Bond
9. We do not expect to find abnormal pressures, temperatures or hydrogen sulfide problems in this highly developed area.
10. The anticipated starting date for this well is July 1, 1980 dependent on rig availability.



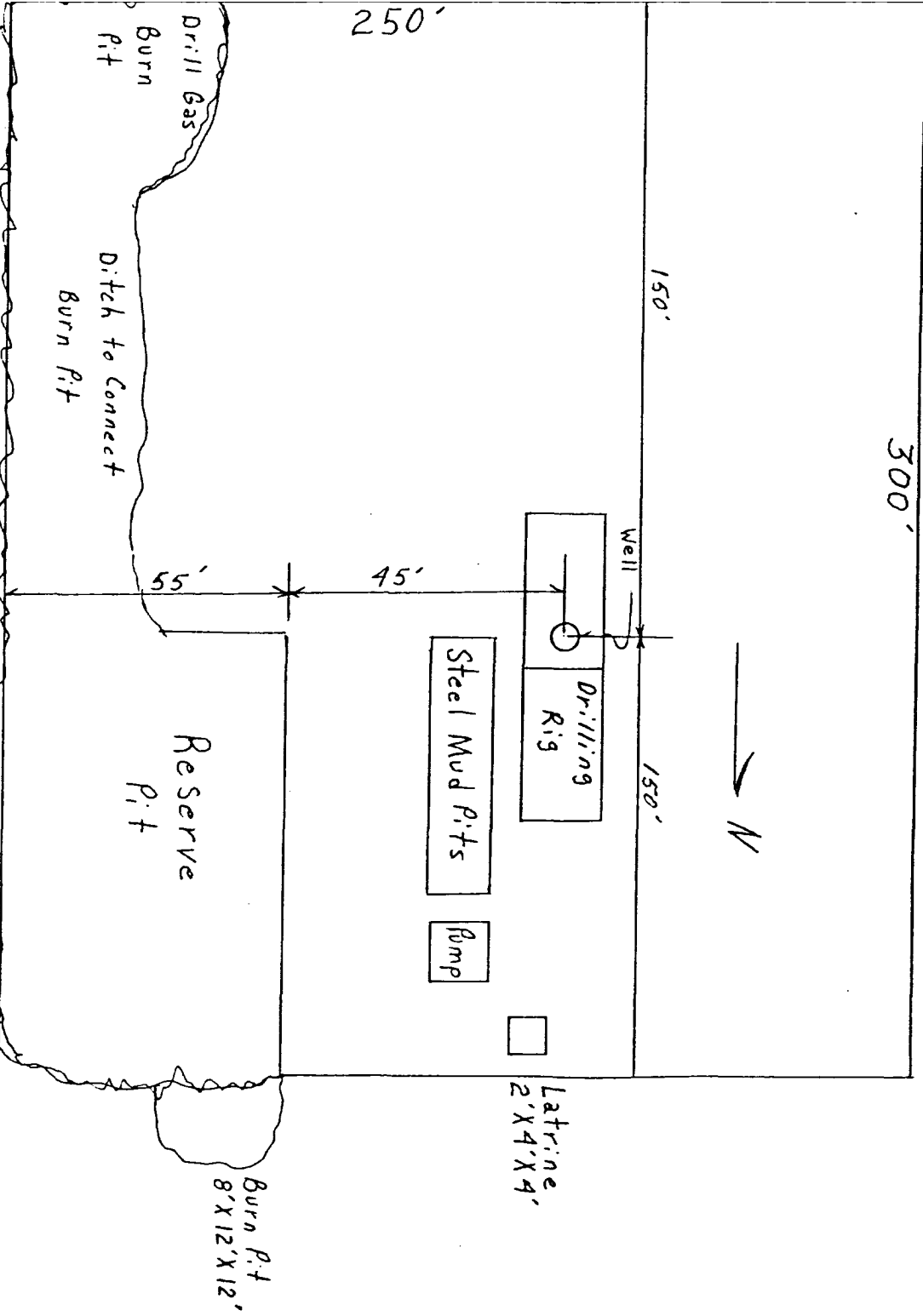
Supron Energy Corporation
Reid "B" #1E, Sec. 31, T29N, R10W
N.M.P.M., San Juan Co, N.M.

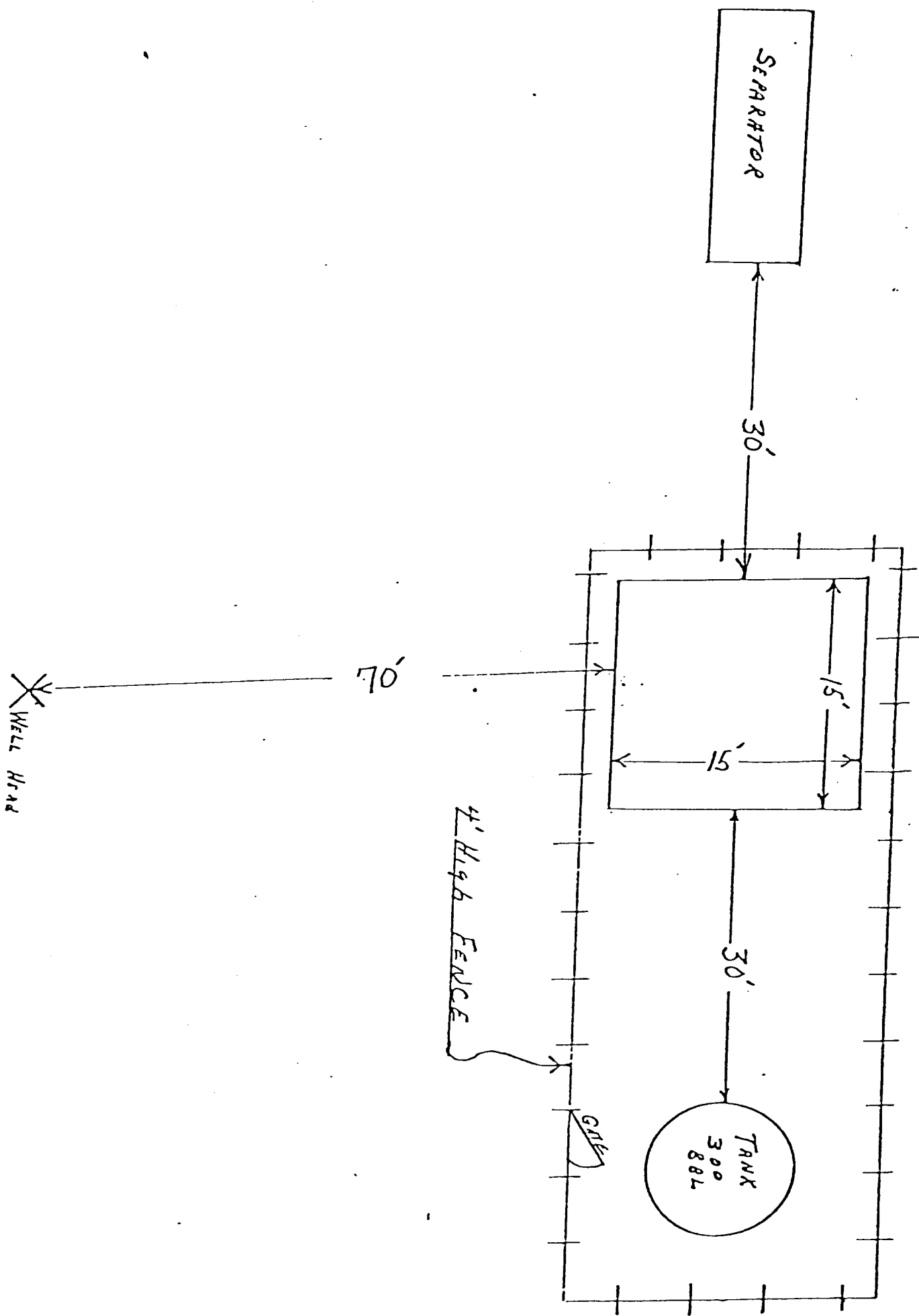
LOCATION AND EQUIPMENT LAYOUT

SUPRON ENERGY CORPORATION

REID "B" NO. 1-E

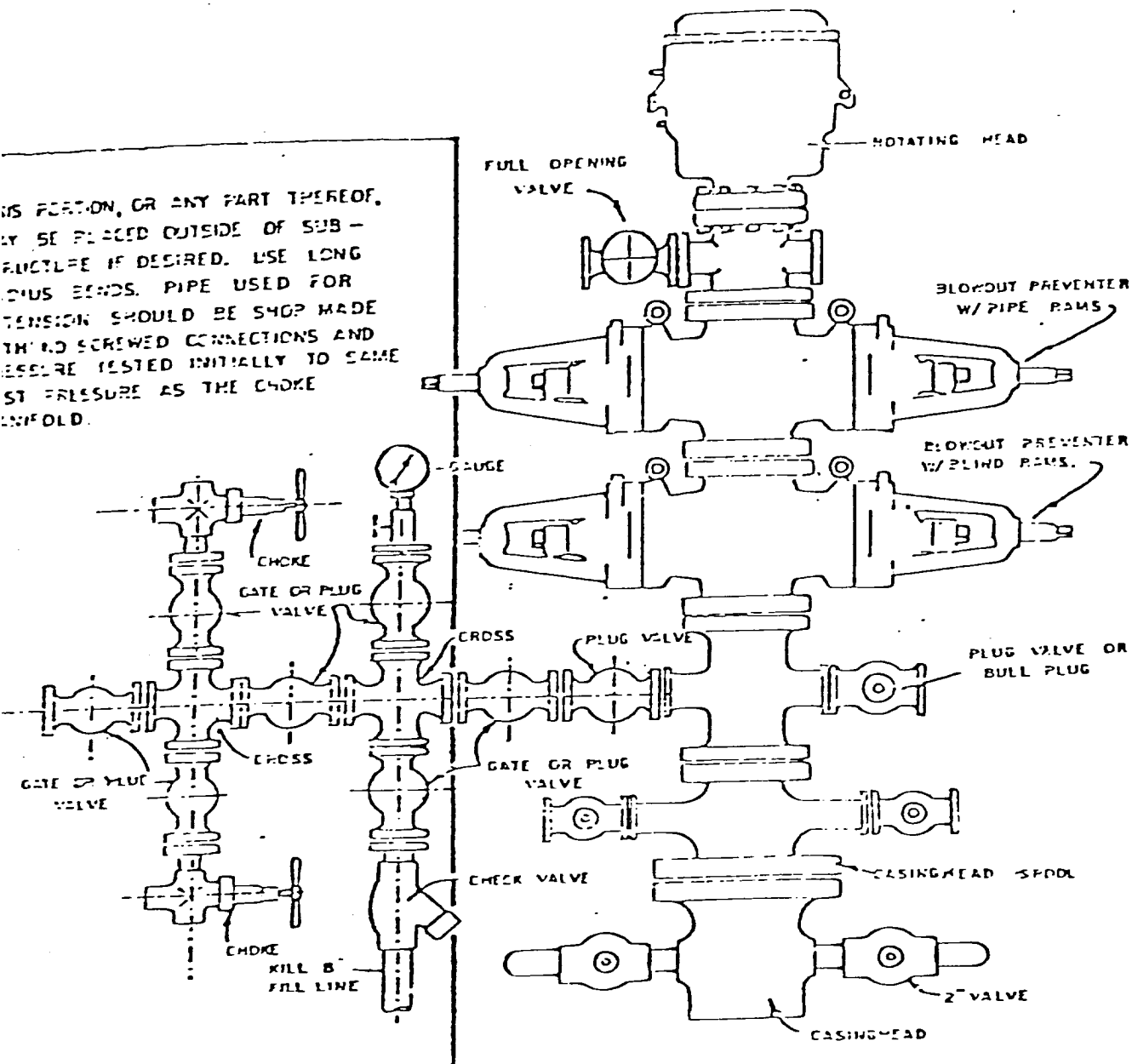
1760 Feet from the South line and 1080 feet from the East line of Section 31, Township 29 North, Range 10 West, N.M.P.M., San Juan County, New Mexico.





Blowout Preventer will be tested daily and prior to drilling out with the results to be logged on the drillers report.

The B.O.P. and all valve and fittings are rated at 3000 psi working pressure, and hydraulically operated

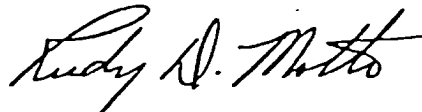


BLOWOUT PREVENTER HOOKUP

SUPRON ENERGY CORPORATION
Post Office Box 808
FARMINGTON, New Mexico 87401

I hereby certify that I, or persons under my direct supervision, have inspected the proposed drillsite and access route; that I am familiar with the conditions which presently exist; that the statements made in this plan are, to the best of my knowledge, true and correct; and, that the work associated with the operations proposed herein will be performed by SUPRON ENERGY CORPORATION and its contractors subcontractors in conformity with this plan and the terms and conditions under which it is approved.

SUPRON ENERGY CORPORATION

A handwritten signature in cursive script, reading "Rudy D. Motto".

Rudy D. Motto
Area Superintendent
Phone: 325-3587