

Denny S. Fox
DEPUTY OIL & GAS INSPECTOR

State of New Mexico
Energy, Minerals and Natural Resources Department

SUBMIT 1 COPY TO
APPROPRIATE
DISTRICT OFFICE
AND 1 COPY TO
SANTA FE OFFICE

trict II
). Drawer DD, Artesia, NM 88222
MAR 28 1997

OIL CONSERVATION DIVISION

2040 South Pacheco Street
Santa Fe, New Mexico 87505

trict III
XO Rio Brazos Rd, Aztec, NM 87410

Approved
PIT REMEDIATION AND CLOSURE REPORT

Operator: PNM Gas Services (Meridian) **Telephone:** 324-3764
Address: 603 W. Elm Street Farmington, NM 87401
Facility or Well Name: Reid B #1E
Location: Unit: I Sec. 31 T. 29 N R. 10 W County San Juan
Pit Type: Separator ☒ Dehydrator ☐ Other ☐
Land Type: BLM ☒ State ☐ Fee ☐ Other ☐

Pit Location: Pit dimensions: length 20 width 20 depth 3
(Attach diagram) Reference: wellhead ☒ other ☐
Footage from reference: 91'
Direction from reference: 29 Degrees ☒ East ☐ North ☒
West ☐ South ☐

Depth to Ground Water:
(Vertical distance from contaminants to seasonal high water elevation of ground water)
Less than 50 feet (20 points)
50 feet to 99 feet (10 points)
Greater than 100 feet (0 points) 0

Wellhead Protection Area:
(Less than 200 feet from a private domestic water source, or, less than 1,000 feet from all other water sources)
Yes (20 points)
No (0 points) 0

Distance to Surface Water:
(Horizontal distance to perennial lakes, ponds, rivers, streams, creeks, irrigation canals and ditches)
Less than 200 feet (20 points)
200 feet to 1,000 feet (10 points)
Greater than 1,000 feet (0 points) 0

RANKING SCORE (TOTAL POINTS): 0

Date Remediation Started: 9/17/96 Date Completed: 9/20/96

Remediation Method: Excavation ☒ Approx. Cubic Yard 35
(Check all appropriate sections) Landfarmed ☒ Amount Landfarmed (cubic yds) 25
Other

Remediation Location: Onsite ☒ Offsite
(i.e., landfarmed onsite, name and location of offsite facility)

Backfill Material Location:

General Description of Remedial Action:

Excavated contaminated soil to pit size of 15'x9'x7' and landfarmed soil onsite within a bermed area at a depth of 6" to 12". Soil was aerated by plowing/disking until soil met regulatory levels.

Ground Water Encountered: No ☒ Yes ☐ Depth

Final Pit Closure Sampling:

Sample Location 5 pt composite-4 side walls and center of pit bottom

(if multiple samples, attach sample result and diagram of sample locations and depths.)

Sample depth 7'

Sample date 9/17/96 Sample time 10:50:00 AM

Sample Results

Benzene (ppm) < 0.0002

Total BTEX (ppm) 0.0241

Field headspace (ppm)

TPH < 5.0 Method 8015A

Vertical Extent (ft) Risk Assessment form attached Yes ☐ No ☒

Ground Water Sample: Yes ☐ No ☒ (If yes, attach sample results)

I HEREBY CERTIFY THAT THE INFORMATION ABOVE IS TRUE AND COMPLETE TO THE BEST OF MY KNOWLEDGE AND MY BELIEF

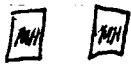
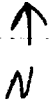
DATE January 22, 1997


SIGNATURE


Denver Bearden

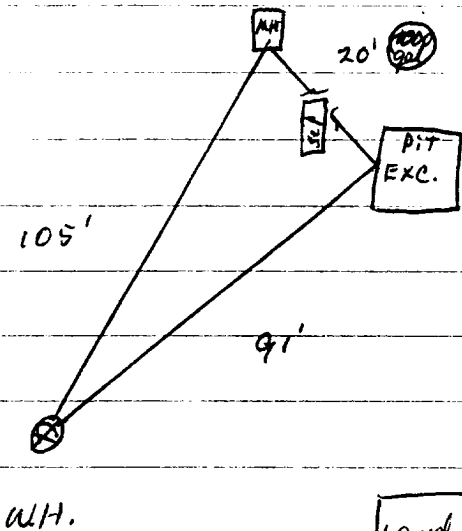
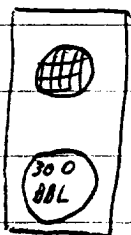
PRINTED NAME AND TITLE Denver Bearden Administrator III

Reid B #1E



sep 

sep 



***Diesel Range Organics***

Attn: *Denver Bearden*
 Company: *PNM Gas Services*
 Address: *603 W. Elm*
 City, State: *Farmington, NM 87401*

Date: *19-Sep-96*
 COC No.: *4883*
 Sample No. *12180*
 Job No. *2-1000*

Project Name: *PNM Gas Services - Reid B #1E*
 Project Location: *9609171050; Pit Excavation Composite Sample*
 Sampled by: *RH* Date: *17-Sep-96* Time: *10:50*
 Analyzed by: *DC/HR* Date: *19-Sep-96*
 Sample Matrix: *Soil*

Laboratory Analysis

<i>Parameter</i>	<i>Result</i>	<i>Unit of Measure</i>	<i>Detection Limit</i>	<i>Unit of Measure</i>
<i>Diesel Range Organics (C10 - C28)</i>	<i>< 5.0</i>	<i>mg/kg</i>	<i>5.0</i>	<i>mg/kg</i>

Quality Assurance ReportDRO QC No.: *0489-QC****Calibration Check***

<i>Parameter</i>	<i>Method Blank</i>	<i>Unit of Measure</i>	<i>True Value</i>	<i>Analyzed Value</i>	<i>% Diff</i>	<i>Limit</i>
<i>Diesel Range (C10 - C28)</i>	<i>< 5.0</i>	<i>ppm</i>	<i>100</i>	<i>93</i>	<i>6.9</i>	<i>15%</i>

Matrix Spike

<i>Parameter</i>	<i>1 - Percent Recovered</i>	<i>2 - Percent Recovered</i>	<i>Limit</i>	<i>%RSD</i>	<i>Limit</i>
<i>Diesel Range (C10-C28)</i>	<i>91</i>	<i>81</i>	<i>(70-130)</i>	<i>8</i>	<i>20%</i>

Method - SW-846 EPA Method 8015A mod. - Nonhalogenated Volatile Hydrocarbons by Gas Chromatography

Approved by: *[Signature]*
 Date: *9/20/96*

OFF: (505) 325-5667



LAB: (505) 325-1556

AROMATIC VOLATILE ORGANICS

Attn: *Denver Bearden*
Company: *PNM Gas Services*
Address: *603 W. Elm*
City, State: *Farmington, NM 87401*

Date: *19-Sep-96*
COC No.: *4883*
Sample No.: *12180*
Job No.: *2-1000*

Project Name: *PNM Gas Services - Reid B #1E*
Project Location: *9609171050; Pit Excavation Composite Sample*
Sampled by: *RH* Date: *17-Sep-96* Time: *10:50*
Analyzed by: *DC* Date: *19-Sep-96*
Sample Matrix: *Soil*

Laboratory Analysis

Parameter	Result	Unit of Measure	Detection Limit	Unit of Measure
<i>Benzene</i>	<i><0.2</i>	<i>ug/kg</i>	<i>0.2</i>	<i>ug/kg</i>
<i>Toluene</i>	<i>10.5</i>	<i>ug/kg</i>	<i>0.2</i>	<i>ug/kg</i>
<i>Ethylbenzene</i>	<i><0.2</i>	<i>ug/kg</i>	<i>0.2</i>	<i>ug/kg</i>
<i>m,p-Xylene</i>	<i>9.8</i>	<i>ug/kg</i>	<i>0.2</i>	<i>ug/kg</i>
<i>o-Xylene</i>	<i>3.7</i>	<i>ug/kg</i>	<i>0.2</i>	<i>ug/kg</i>
	<i>TOTAL</i>	<i>24.1</i>		<i>ug/kg</i>

Method - *SW-846 EPA Method 8020 Aromatic Volatile Organics by Gas Chromatography*

Approved by: *Jack*
Date: *9/19/96*

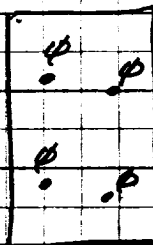
P.O. BOX 2606 • FARMINGTON, NM 87499

- TECHNOLOGY BLENDING INDUSTRY WITH THE ENVIRONMENT -

Reid B #1E
Meridian Oil
Sec. 31-29N-10W

11-25-96

Land Farm: On location
Composite sample # 9611250945
Soil vapor headspace PSD reading = 6.8 ppm



2"-12" depth

***Diesel Range Organics***

Attn: *Denver Bearden*
Company: *PNM Gas Services*
Address: *603 W. Elm*
City, State: *Farmington, NM 87401*

Date: *29-Nov-96*
COC No.: *5118*
Sample No. *13036*
Job No. *2-1000*

Project Name: *PNM Gas Services - Reid B #1E Landfarm*
Project Location: *9611250945; 4pt. Composite, 2"-12" depth*
Sampled by: *GC* Date: *25-Nov-96* Time: *9:45*
Analyzed by: *DC/HR* Date: *26-Nov-96*
Sample Matrix: *Soil*

Laboratory Analysis

<i>Parameter</i>	<i>Result</i>	<i>Unit of Measure</i>	<i>Detection Limit</i>	<i>Unit of Measure</i>
<i>Diesel Range Organics (C10 - C28)</i>	<i><5.0</i>	<i>mg/kg</i>	<i>5.0</i>	<i>mg/kg</i>

Quality Assurance ReportDRO QC No.: *0512-QC****Calibration Check***

<i>Parameter</i>	<i>Method Blank</i>	<i>Unit of Measure</i>	<i>True Value</i>	<i>Analyzed Value</i>	<i>% Diff</i>	<i>Limit</i>
<i>Diesel Range (C10 - C28)</i>	<i><5.0</i>	<i>ppm</i>	<i>100</i>	<i>107</i>	<i>7.2</i>	<i>15%</i>

Matrix Spike

<i>Parameter</i>	<i>1 - Percent Recovered</i>	<i>2 - Percent Recovered</i>	<i>Limit</i>	<i>%RSD</i>	<i>Limit</i>
<i>Diesel Range (C10-C28)</i>	<i>109</i>	<i>107</i>	<i>(70-130)</i>	<i>1</i>	<i>20%</i>

Method - SW-846 EPA Method 8015A mod. - Nonhalogenated Volatile Hydrocarbons by Gas ChromatographyApproved by: Date: *11/29/96*

P.O. BOX 2606 • FARMINGTON, NM 87499

- TECHNOLOGY BLENDING INDUSTRY WITH THE ENVIRONMENT -