

UNITED STATES
DEPARTMENT OF THE INTERIOR
GEOLOGICAL SURVEY(Other instructions on
reverse side)

30-045-24362

APPLICATION FOR PERMIT TO DRILL, DEEPEN, OR PLUG BACK

1a. TYPE OF WORK

DRILL ☒DEEPEN ☐PLUG BACK ☐

b. TYPE OF WELL

OIL
WELL ☐GAS
WELL ☐

OTHER

SINGLE
ZONE ☒MULTIPLE
ZONE ☐

2. NAME OF OPERATOR

Supron Energy Corporation

3. ADDRESS OF OPERATOR

P.O. Box 808, Farmington, New Mexico 82401

4. LOCATION OF WELL (Report location clearly and in accordance with any State requirements.)*

At surface

1075 ft/South line and 1075 ft/East line

At proposed prod. zone Same as above

14. DISTANCE IN MILES AND DIRECTION FROM NEAREST TOWN OR POST OFFICE*

1 1/2 miles South of Bloomfield, New Mexico 87401

15. DISTANCE FROM PROPOSED*

LOCATION TO NEAREST
PROPERTY OR LEASE LINE, FT.
(Also to nearest drlg. unit line, if any) 1075 feet
1025 feet

16. NO. OF ACRES IN LEASE

1088.20

18. DISTANCE FROM PROPOSED LOCATION*

TO NEAREST WELL, DRILLING, COMPLETED,
OR APPLIED FOR, ON THIS LEASE, FT. 1000 feet

19. PROPOSED DEPTH

6400

17. NO. OF ACRES ASSIGNED
TO THIS WELL

S/309.96

20. ROTARY OR CABLE TOOLS

Rotary

21. ELEVATIONS (Show whether DF, RT, GR, etc.)

5671 GR.

22. APPROX. DATE WORK WILL START*

August 1, 1980

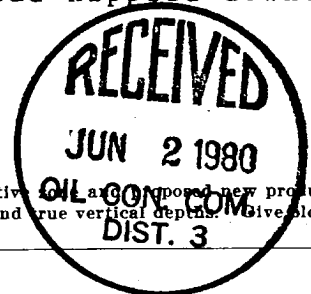
23. PROPOSED CASING AND CEMENTING PROGRAM

SIZE OF HOLE	SIZE OF CASING	WEIGHT PER FOOT	SETTING DEPTH	QUANTITY OF CEMENT
12 1/2	8-5/8	23.00	750	125 sx. CIRCULATE
7-7/8	4 1/2	10.50	6400	700 sx.

We propose to drill this well through the Dakota formation of approx. 6400 ft. using mud as the circulating medium. Surface pipe will be set as described above and cement will be circulated around the casing, after the well is drilled, 4 1/2" casing will be run and cemented in 3 stages as follows: 1st stage approx 200 sx of 50-50 Pozmix, 2nd stage approx. 200 sx of 50-50 Pozmix and 50 sx of class B, 3rd stage approx. 200 sx of 65-35-6 followed by 50 sx of class B cement, after cementing, the Dakota zone will be perforated, fraced and cleaned up, tubing will be run and the well head nipped down.

NWU- 486

gas is dedicated



IN ABOVE SPACE DESCRIBE PROPOSED PROGRAM: If proposal is to deepen or plug back, give data on present productive zone. If proposal is to drill or deepen directionally, give pertinent data on subsurface locations and measured and true vertical depths. Give blowout preventer program, if any.

24.

SIGNED

TITLE Area Superintendent

DATE

(This space for Federal or State office use)

PERMIT NO.

APPROVAL DATE

APPROVED BY

TITLE

CONDITIONS OF APPROVAL, IF ANY:

NMOC

FOR LING OPERA. AND UNCHANGED ARE
SOL. OF THE... ATTACHED
"GENERAL..."

ch 3rd

RECEIVED
AS AMENDED
DATE

OIL CONSERVATION DIVISION

STATE OF NEW MEXICO
ENERGY AND MINERALS DEPARTMENTP. O. BOX 2088
SANTA FE, NEW MEXICO 87501Form C-102
Revised 10-1-78

All distances must be from the outer boundaries of the Section.

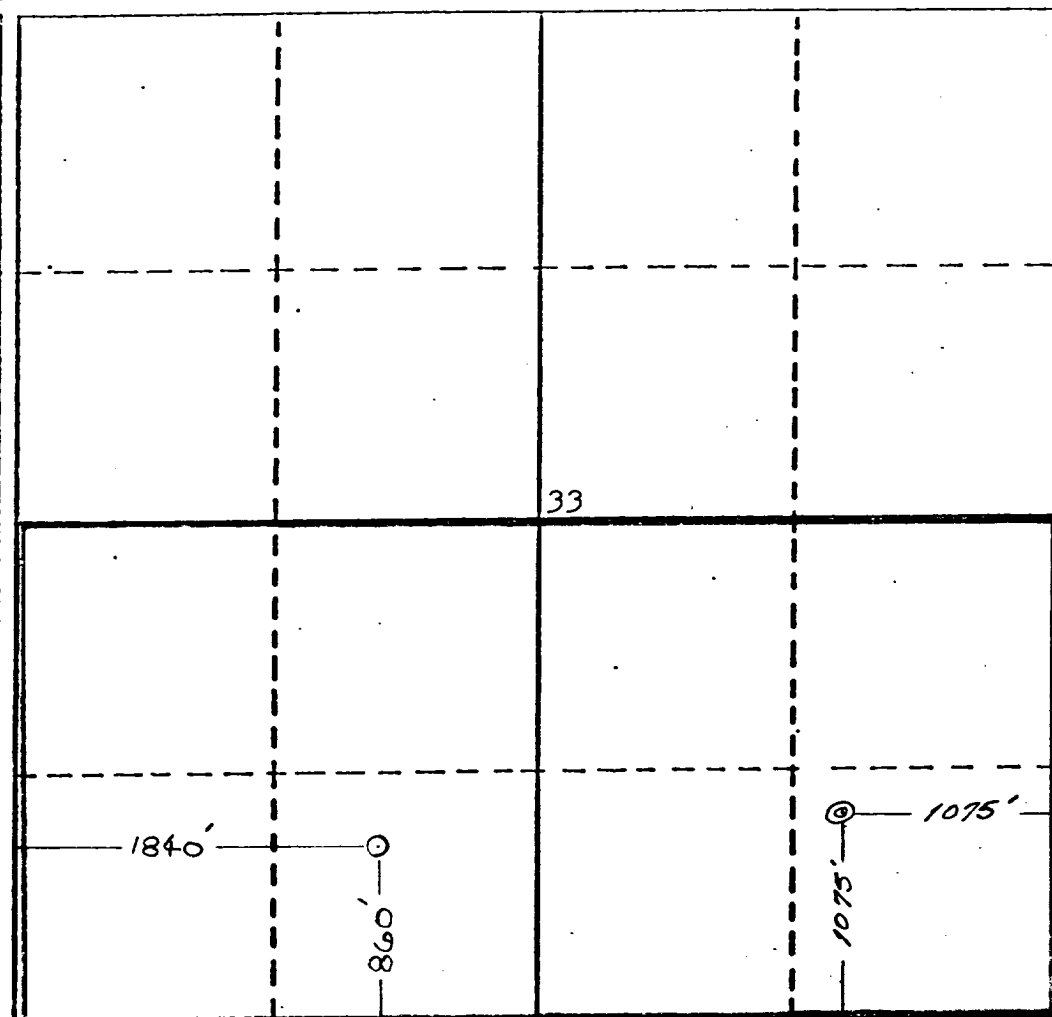
Operator SUPRON ENERGY CORPORATION			Lease WITT		Well No. 1-E
Unit Letter P	Section 33	Township 29 NORTH	Range 11 WEST	County SAN JUAN	
Actual Footage Location of Well: 1075 feet from the SOUTH line and 1075 feet from the EAST line					
Ground Level Elev. 5671	Producing Formation DAKOTA		Pool BASIN Dakota		Dedicated Acreage 8/2 309.96 Acres

1. Outline the acreage dedicated to the subject well by colored pencil or hatchure marks on the plat below.
2. If more than one lease is dedicated to the well, outline each and identify the ownership thereof (both as to working interest and royalty).
3. If more than one lease of different ownership is dedicated to the well, have the interests of all owners been consolidated by communitization, unitization, force-pooling, etc?

☐ Yes ☐ No If answer is "yes," type of consolidation Communitization

If answer is "no," list the owners and tract descriptions which have actually been consolidated. (Use reverse side of this form if necessary.)

No allowable will be assigned to the well until all interests have been consolidated (by communitization, unitization, forced-pooling, or otherwise) or until a non-standard unit, eliminating such interests, has been approved by the Division.



CERTIFICATION

I hereby certify that the information contained herein is true and complete to the best of my knowledge and belief.

Rudy D. Motto
Name

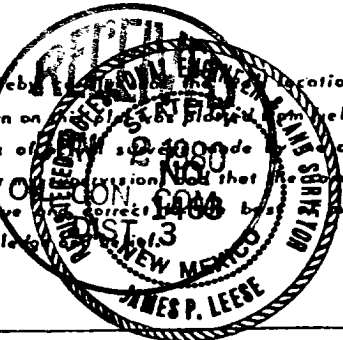
Rudy D. Motto
Position

Area Superintendent
Company

SUPRON ENERGY CORPORATION
Date

February 29, 1980

I hereby certify that the location shown on this plat is correct and that the notes of the survey are correct and true and that the information contained herein is true to the best of my knowledge and belief.



Date Surveyed

February 19, 1980

Registered Professional Engineer
and/or Land Surveyor

James P. Leese
James P. Leese

Certificate No.

1463

SUPRON ENERGY CORPORATION

Witt No. 1-E
SE $\frac{1}{4}$ Section 33, T-29N, R-11W, N.M.P.M.
San Juan County, New Mexico

1. The name of the surface formation is "Wasatch."
2. The estimated tops of important geological markers are:

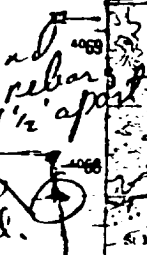
A. Base of the Ojo Alamo	750 ft.
B. Top of the Fruitland	1050 ft.
C. Top of the Pictured Cliffs	1350 ft.
D. Top of the Cliff House	3100 ft.
E. Base of the Greenhorn	5950 ft.
F. Top of the Dakota	6000 ft.
3. The estimated depths at which water, oil or mineral bearing formations are expected to be encountered are:

A. Ojo Alamo	750 ft.	Water
B. Fruitland	1050 ft.	Water
C. Pictured Cliffs	1350 ft.	Gas
D. Cliff House	3100 ft.	Gas
E. Dakota	6000 ft.	Gas
4. The casing program is shown on form 9-331C and all casing is new.
5. The lessee's pressure control equipment schematics are attached along with minimum specifications, testing procedures and frequencies.
6. The type, estimated volumes and characteristics of the circulating medium are as follows:

A. 0-250 ft.	Natural Mud
B. 250 - 6650 ft.	Permaloid, Non dispersed mud containing approximately 200 sx of gel, 80 sx of permaloid and 20 sx of C.M.C.
7. The auxiliary equipment to be used will be floats at the first and a sub on the floor with a full opening valve to be stabbed into the drillpipe when the kelly is not in the string.
8. This well is in an area which is heavily developed therefore we will not have a testing or coring program. The logging program is as follows:

A. E.S. Induction
B. Gamma Ray Density
C. Gamma Ray Correlation
D. Cement Bond
9. We do not expect to find any abnormal pressures, temperatures or hydrogen sulfide problems in this highly developed area.
10. The anticipated starting date is August 1, 1980, dependent on rig availability.

10800 233300mE DURANGO, COLO 91 MI AZTEC IUS 950 55 MI 236 237 R 11W R 10W 239 55' 240 241 242 243 244 245 IV (AZTEC)

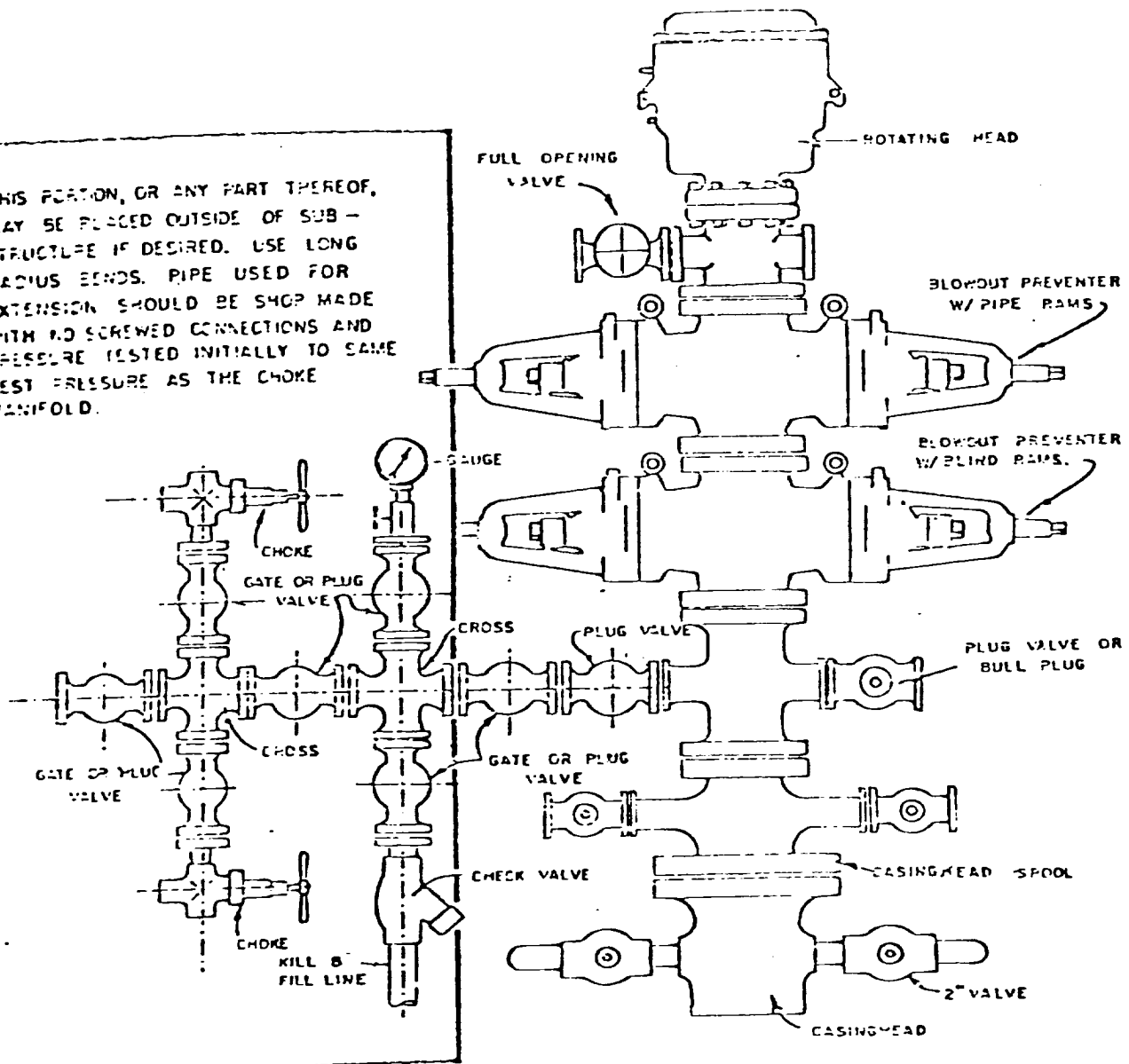


Supron Energy Corporation
Witt #1E, Sec 33, T29N, R11W,
N.M.P.M., San Juan Co, N.M.

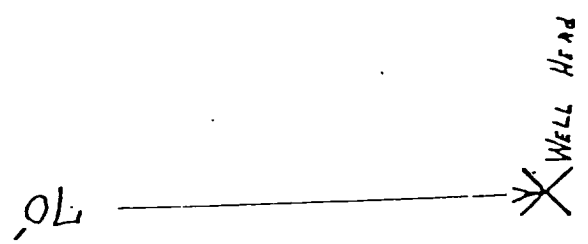
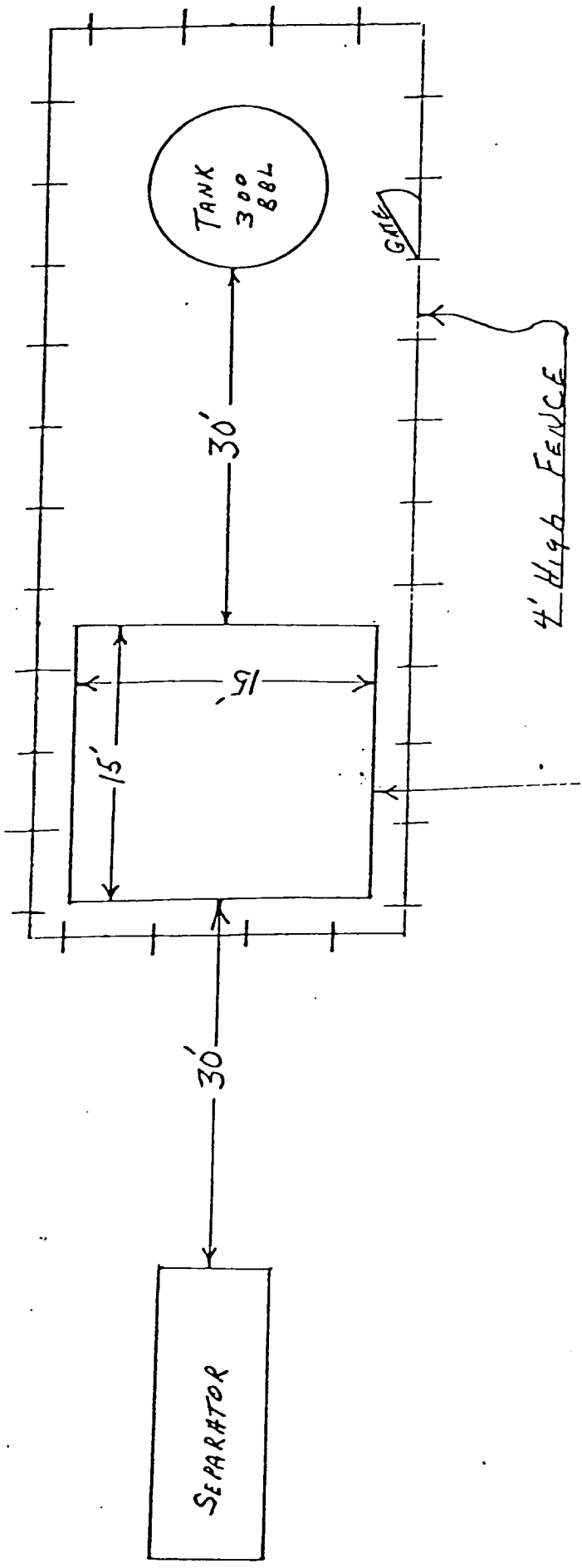
Blowout Preventer will be tested daily and prior to drilling out with the results to be logged on the drillers report.

The B.O.P. and all valve and fittings are rated at 3000 psi working pressure, and hydraulically operated

THIS PORTION, OR ANY PART THEREOF, MAY BE PLACED OUTSIDE OF SUB-STRUCTURE IF DESIRED. USE LONG RADIUS BENDS. PIPE USED FOR EXTENSION SHOULD BE SHOP MADE WITH NO SCREWED CONNECTIONS AND PRESSURE TESTED INITIALLY TO SAME TEST PRESSURE AS THE CHOKE MANIFOLD.



BLOWOUT PREVENTER HOOKUP



SUPRON ENERGY CORPORATION
Post Office Box 808
FARMINGTON, NEW MEXICO 87401

I hereby certify that I, or persons under my direct supervision, have inspected the proposed drillsite and access route; that I am familiar with the conditions which presently exist; that the statements made in this plan are, to the best of my knowledge, true and correct; and, that the work associated with the operations proposed herein will be performed by SUPRON ENERGY CORPORATION and its contractors subcontractors in conformity with this plan and the terms and conditions under which it is approved.

SUPRON ENERGY CORPORATION

A handwritten signature in cursive script, reading "Rudy D. Motto".

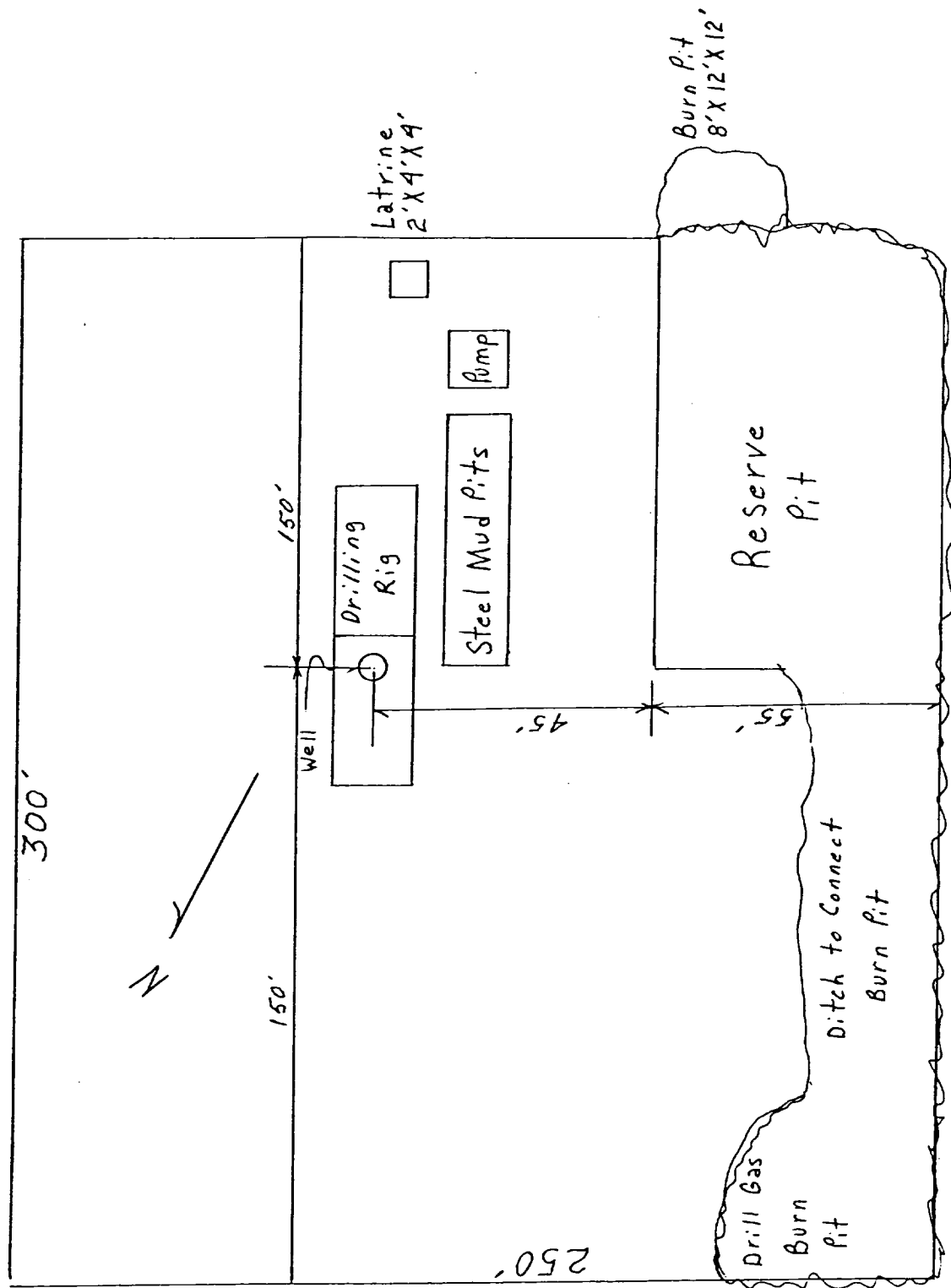
Rudy D. Motto
Area Superintendent
Phone: 325-3587

LOCATION AND EQUIPMENT LAYOUT

SUPRON ENERGY CORPORATION

WITT NO. 1-E

1075 Feet from the South line and 1075 feet from the East line of Section 33, Township 29 North, Range 11 West, N.M.P.M., San Juan County, New Mexico.



SUPRON ENERGY CORPORATION

Witt No. 1-E

SE $\frac{1}{4}$ Section 33, T-29N, R-11W, N.M.P.M.

The following attachments are included with this application:

1. Topographical map showing the proposed location and access road.
2. Planned access road is 20 feet wide and 400 feet long approaching the location from the South East.
3. Map showing existing production facilities and access roads.
4. Location of surface equipment if required.
5. Drilling and completion water will be obtained from the San Juan River.
6. All pits will be fenced and constructed in such a manner as to prevent litter on the location.
7. We will dispose of all waste by placing it in the reserve pit and burying it when the well is completed.
8. There is no camp at or near the site.
9. There is no air strip.
10. A plat is attached showing the location of the rig, mud tanks, reserve pit, burn pit and ect.
11. A letter of certification is attached. The operators representative for compliance purposes is Rudy D. Motto, Area Superintendent, P.O. Box 808, Farmington, New Mexico 87401. Phone (505) 325-3587.
12. After the well is completed, the location will be cleaned up and bladed. The reserve pit will be allowed to dry, then be filled and restored to its natural state.
13. The soil is sandy loam with the principal vegetation being sagebrush, juniper, snakeweed, rabbitbrush, galleta, prickley pear, three-awn, narrow leaf yucca and indian ricegrass.