

UNITED STATES  
DEPARTMENT OF THE INTERIOR  
GEOLOGICAL SURVEY

## APPLICATION FOR PERMIT TO DRILL, DEEPEN, OR PLUG BACK

## 1a. TYPE OF WORK

DRILL ☒DEEPEN ☐PLUG BACK ☐

## b. TYPE OF WELL

OIL  
WELL ☐GAS  
WELL ☒

OTHER

SINGLE  
ZONE ☒MULTIPLE  
ZONE ☐

## 2. NAME OF OPERATOR

Blackwood &amp; Nichols Co., Ltd.

## 3. ADDRESS OF OPERATOR

P.O. Box 1237, Durango, Colorado 81301

## 4. LOCATION OF WELL (Report location clearly and in accordance with any State requirements.\*)

At surface

2550' F/SL - 875' F/EL

At proposed prod. zone

Same

## 14. DISTANCE IN MILES AND DIRECTION FROM NEAREST TOWN OR POST OFFICE\*

Six Miles

## 10. DISTANCE FROM PROPOSED\*

LOCATION TO NEAREST  
PROPERTY OR LEASE LINE, FT.  
(Also to nearest drilg. unit line, if any)

## 18. DISTANCE FROM PROPOSED LOCATION\*

TO NEAREST WELL, DRILLING, COMPLETED,  
OR APPLIED FOR, ON THIS LEASE, FT.

## 16. NO. OF ACRES IN LEASE

1779.91

17. NO. OF ACRES ASSIGNED  
TO THIS WELL

E 319.44

## 19. PROPOSED DEPTH

5680'

## 20. ROTARY OR CABLE TOOLS

Rotary

## 21. ELEVATIONS (Show whether DF, RT, GR, etc.)

6127' GL

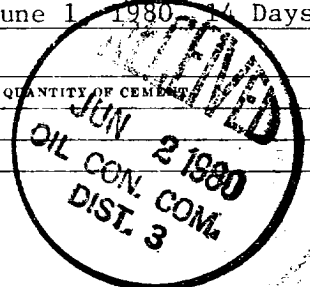
## 22. APPROX. DATE WORK WILL START\*

June 1, 1980 14 Days

## 23.

## PROPOSED CASING AND CEMENTING PROGRAM

SIZE OF HOLE	SIZE OF CASING	WEIGHT PER FOOT	SETTING DEPTH	QUANTITY OF CEMENT
13 3/4"	9 5/8"	32.40# H-40	250' New	
8 3/4"	7"	23.00# K-55	3410' New	
6 1/4"	4 1/2" Liner	10.50# K-55	3210' - 5680' New	



NTL-6

(3) San Jose

(6) Ojo Alamo 1810'; Kirtland 2070'; Lewis Shale 3295'; Cliffhouse 4620'; Mancos Shale 5420'.

(7) Fruitland 2810'; Pictured Cliffs 3010'; Massive Cliffhouse 4930'; Menefee 4980'; Point Lookout 5230'.

(9) 9 5/8" surface; 250 sacks Class B cement with 2% CaCl<sub>2</sub>; circulate to surface. 7" intermediate; 200 sacks Lite cement with 1/4# flocele per sack followed with 100 sacks Class B cement with 2% CaCl<sub>2</sub> and 1/4# flocele/sack in order to bring cement up behind 7" casing to approximately 1600' to cover the Ojo Alamo formation. 4 1/2" liner; 300 sacks 50-50 Pozmix with 2% Gel, 0.6% CFR, 1/4# flocele per sack and 6 1/2# Gilsonite per sack to circulate cement at top of liner at 3210'.

(10) A 3000 PSI WP; Series 10" - 900 - adapted to Series 10" - 600 and 6" - 600 hydraulic blowout preventer equipped with blind and necessary pipe rams will be used with

(Over)

IN ABOVE SPACE DESCRIBE PROPOSED PROGRAM: If proposal is to deepen or plug back, give data on present productive zone and proposed new productive zone. If proposal is to drill or deepen directionally, give pertinent data on subsurface locations and measured and true vertical depths. Give blowout preventer program, if any.

24.

SIGNED Delasso LoosTITLE District ManagerDATE March 27, 1980

(This space for Federal or State office use)

PERMIT NO.

APPROVAL DATE

APPROVED

APPROVED BY

TITLE

DATE

CONDITIONS OF APPROVAL, IF ANY:

APR 2 1980  
James H. Loo  
DISTRICT ENGINEER

ok Jm

State

\*See Instructions On Reverse Side

NSL 1178

## WELL LOCATION AND ACREAGE DEDICATION PLAT

Supersede 1-1-65  
Effective 1-1-65

All distances must be from the outer boundaries of the Section.

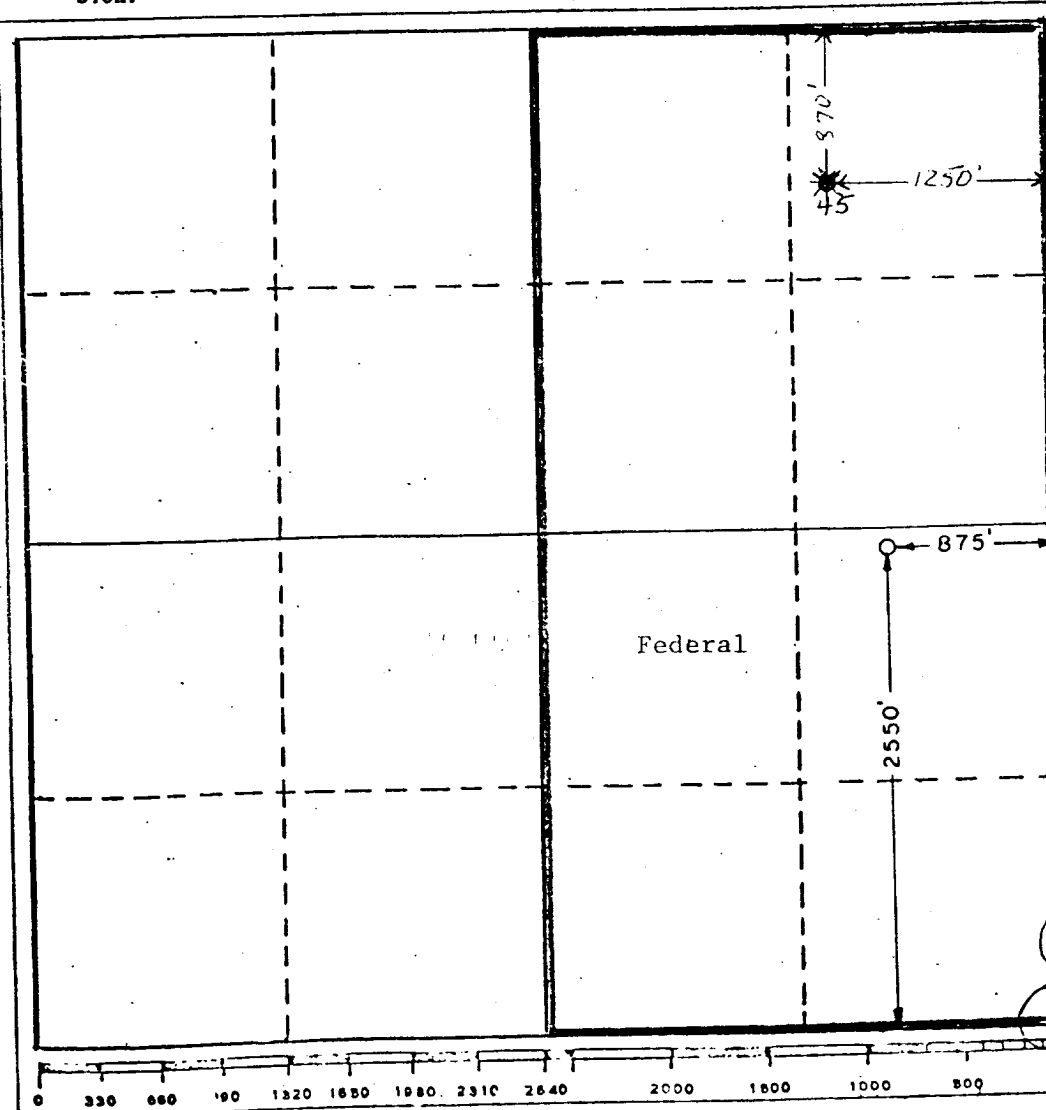
Operator <b>BLACKWOOD &amp; NICHOLS</b>			Lease <b>NORTHEAST BLANCO UNIT</b>		Well No. <b>45A</b>
Unit Letter <b>I</b>	Section <b>5</b>	Township <b>30 N.</b>	Range <b>7W., N.M.P.</b>	County <b>M. SAN JUAN</b>	
Actual Footage Location of Wells <b>2550</b> feet from the <b>south</b> line and <b>875</b> feet from the <b>east</b> line					
Ground Level Elev: <b>6127 U.G.</b>	Producing Formation <b>Mesaverde</b>	Pool <b>Blanco-Mesaverde</b>		Dedicated Acreage: <b>E 319.44</b> Acres	

1. Outline the acreage dedicated to the subject well by colored pencil or hachure marks on the plat below.
2. If more than one lease is dedicated to the well, outline each and identify the ownership thereof (both as to working interest and royalty).
3. If more than one lease of different ownership is dedicated to the well, have the interests of all owners been consolidated by communitization, unitization, force-pooling, etc?

☒ Yes ☐ No If answer is "yes," type of consolidation Unitization

If answer is "no," list the owners and tract descriptions which have actually been consolidated. (Use reverse side of this form if necessary.)

No allowable will be assigned to the well until all interests have been consolidated (by communitization, unitization, forced-pooling, or otherwise) or until a non-standard unit, eliminating such interests, has been approved by the Commission.



## CERTIFICATION

I hereby certify that the information contained herein is true and complete to the best of my knowledge and belief.

Name

Position

District Manager

Company

Blackwood &amp; Nichols Co. Ltd.

Date

March 26, 1980

I hereby certify that the well location shown on this plat was plotted from field notes of actual surveys made by me or under my supervision, and that the same is true and correct to the best of my knowledge and belief.

Date Surveyed

March 26, 1980

Registered Professional Engineer and/or Land Surveyor

John A. Kroeger, FLS

Certificate No.

1941