

RECEIVED

APR 14 1980

UNITED STATES  
DEPARTMENT OF THE INTERIOR  
GEOLOGICAL SURVEY

APPLICATION FOR PERMIT TO DRILL, DEEPEN, OR PLUG BACK

1a. TYPE OF WORK

DRILL ☒DEEPEN ☐PLUG BACK ☐

b. TYPE OF WELL

OIL  
WELL ☐GAS  
WELL ☒

OTHER

SINGLE  
ZONE ☒MULTIPLE  
ZONE ☐

2. NAME OF OPERATOR

SUPRON ENERGY CORPORATION

3. ADDRESS OF OPERATOR

P.O. Box 808, Farmington, New Mexico 87401

4. LOCATION OF WELL (Report location clearly and in accordance with any State requirements.\*)

At surface

1800 ft./North line and 900 ft./West line

At proposed prod. zone

Same as above.

14. DISTANCE IN MILES AND DIRECTION FROM NEAREST TOWN OR POST OFFICE\*

3 miles west of Blanco, New Mexico

10. DISTANCE FROM PROPOSED\*

LOCATION TO NEAREST 900' property & lease  
PROPERTY OR LEASE LINE, FT.  
(Also to nearest drlg. unit line, if any) 900 ft.

18. DISTANCE FROM PROPOSED LOCATION\*

TO NEAREST WELL, DRILLING, COMPLETED,  
OR APPLIED FOR, ON THIS LEASE, FT. 360 ft.

16. NO. OF ACRES IN LEASE

2336.05

19. PROPOSED DEPTH

6700 ft.

17. NO. OF ACRES ASSIGNED  
TO THIS WELL

N 4 320

20. ROTARY OR CABLE TOOLS

Rotary

21. ELEVATIONS (Show whether DF, RT, GR, etc.)

5642

22. APPROX. DATE WORK WILL START\*

May 15, 1980

23.

## PROPOSED CASING AND CEMENTING PROGRAM

SIZE OF HOLE	SIZE OF CASING	WEIGHT PER FOOT	SETTING DEPTH	QUANTITY OF CEMENT
12-1/4"	8-5/8"	24.00	250 ft.	125 sx
7-7/8"	4-1/2"	10.50	6700 ft.	750 sx

We propose to drill this well through the Dakota formation at approximately 6700 ft. using mud as a circulating medium. Surface pipe will be set as described above and cement will be circulated around the casing. After the well is drilled 4-1/2" csg. will be run and cemented in 3 stages as follows: 1st stage approximately 225 sx of 50-50 POZ mix, 2nd stage approximately 225 sx of 50-50 POZ mix followed by 50 sx of class "B" and the 3rd stage approximately 200 sx of 65-35 followed by 50 sx of class "B". After cementing the Dakota zone will be perforated, fraced and cleaned up. Tubing will be run and the wellhead nipped down.

IN ABOVE SPACE DESCRIBE PROPOSED PROGRAM: If proposal is to deepen or plug back, give data on present productive zone and proposed new productive zone. If proposal is to drill or deepen directionally, give pertinent data on subsurface locations and measured and true vertical depths. Give blowout preventer program, if any.

24.

SIGNED

*Rudy P. Motto*  
Rudy P. Motto

TITLE Area Superintendent

DATE April 10, 1980

(This space for Federal or State office use)

PERMIT NO.

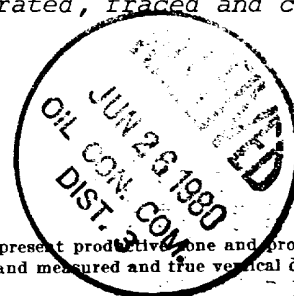
APPROVAL DATE

APPROVED BY

TITLE

CONDITIONS OF APPROVAL, IF ANY:

NMC00

*James J. Lema*

All distances must be from the outer boundaries of the Section.

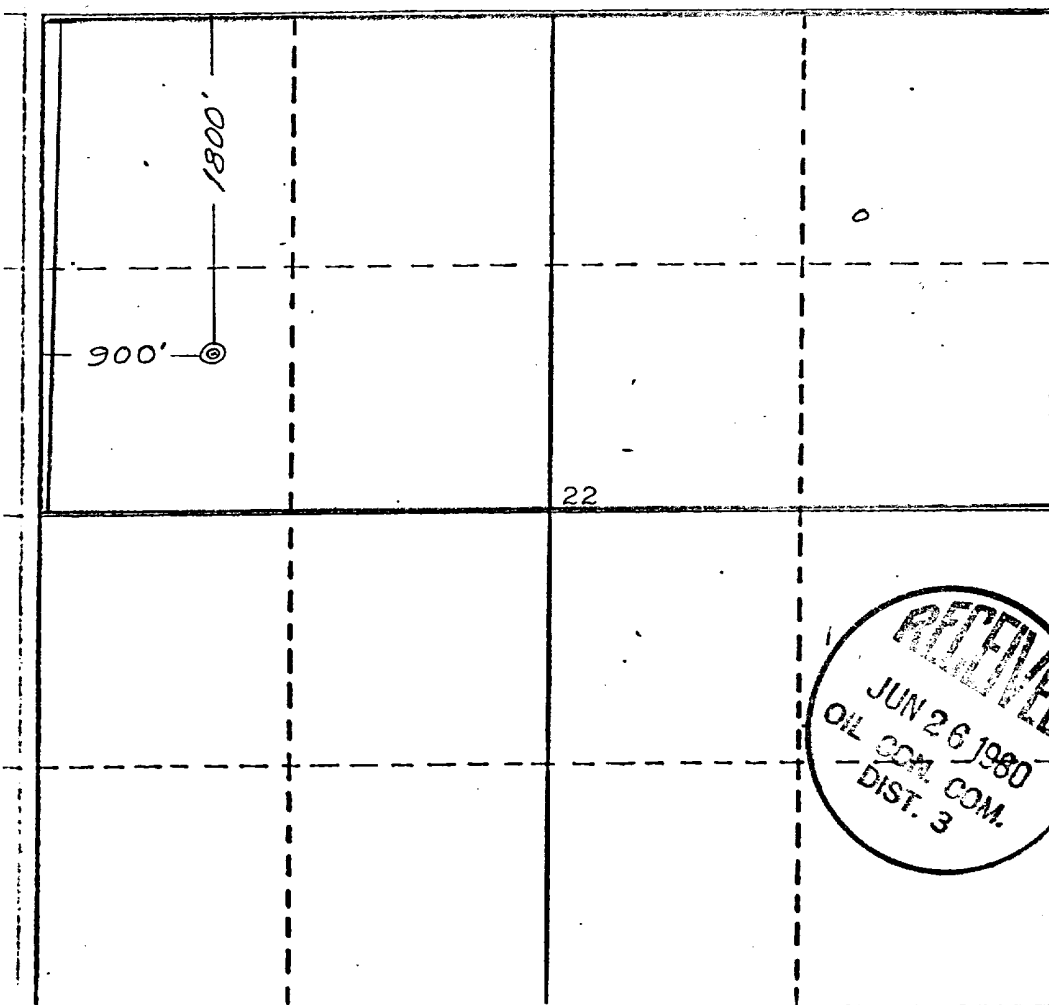
Operator <b>SUPRON ENERGY CORPORATION</b>			Lease <b>ALBRIGHT</b>		Well No. <b>6-E</b>
Unit Letter <b>E</b>	Section <b>22</b>	Township <b>29 NORTH</b>	Range <b>10 WEST</b>	County <b>SAN JUAN</b>	
Actual Footage Location of Well: <b>1800</b> feet from the <b>NORTH</b> line and <b>900</b> feet from the <b>WEST</b> line					
Ground Level Elev. <b>5642</b>	Producing Formation <b>DAKOTA</b> <b>DAKOTA</b>		Pool <b>BASIN</b> <b>BASIN Dakota</b>		Dedicated Acreage <b>N/2 3/4 320</b> Acres

1. Outline the acreage dedicated to the subject well by colored pencil or hatchure marks on the plat below.
2. If more than one lease is dedicated to the well, outline each and identify the ownership thereof (both as to working interest and royalty).
3. If more than one lease of different ownership is dedicated to the well, have the interests of all owners been consolidated by communitization, unitization, force-pooling, etc?

☐ Yes ☐ No If answer is "yes," type of consolidation \_\_\_\_\_

If answer is "no," list the owners and tract descriptions which have actually been consolidated. (Use reverse side of this form if necessary.) \_\_\_\_\_

No allowable will be assigned to the well until all interests have been consolidated (by communitization, unitization, forced-pooling, or otherwise) or until a non-standard unit, eliminating such interests, has been approved by the Division.



#### CERTIFICATION

I hereby certify that the information contained herein is true and complete to the best of my knowledge and belief.

*Rudy D. Motto*  
Name

Rudy D. Motto

Position

Area Superintendent

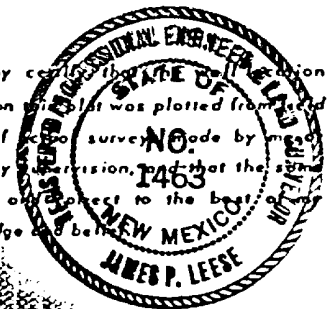
Company

SUPRON ENERGY CORPORATION

Date

February 29, 1980

I hereby certify that the information shown on this plat was plotted from field notes of a legal survey made by me and under my supervision, and that the same is true and correct to the best of my knowledge and belief.



Date Surveyed

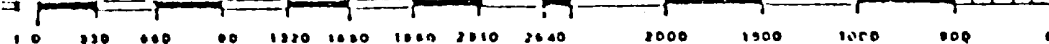
February 21, 1980

Registered Professional Engineer and/or Land Surveyor

*James P. Lease*  
James P. Lease

Certificate No.

1463



SUPRON ENERGY CORPORATION

Albright No. 6-E  
NW ¼ Section 22, T-29N, R-10W, N.M.P.M.  
San Juan County, New Mexico

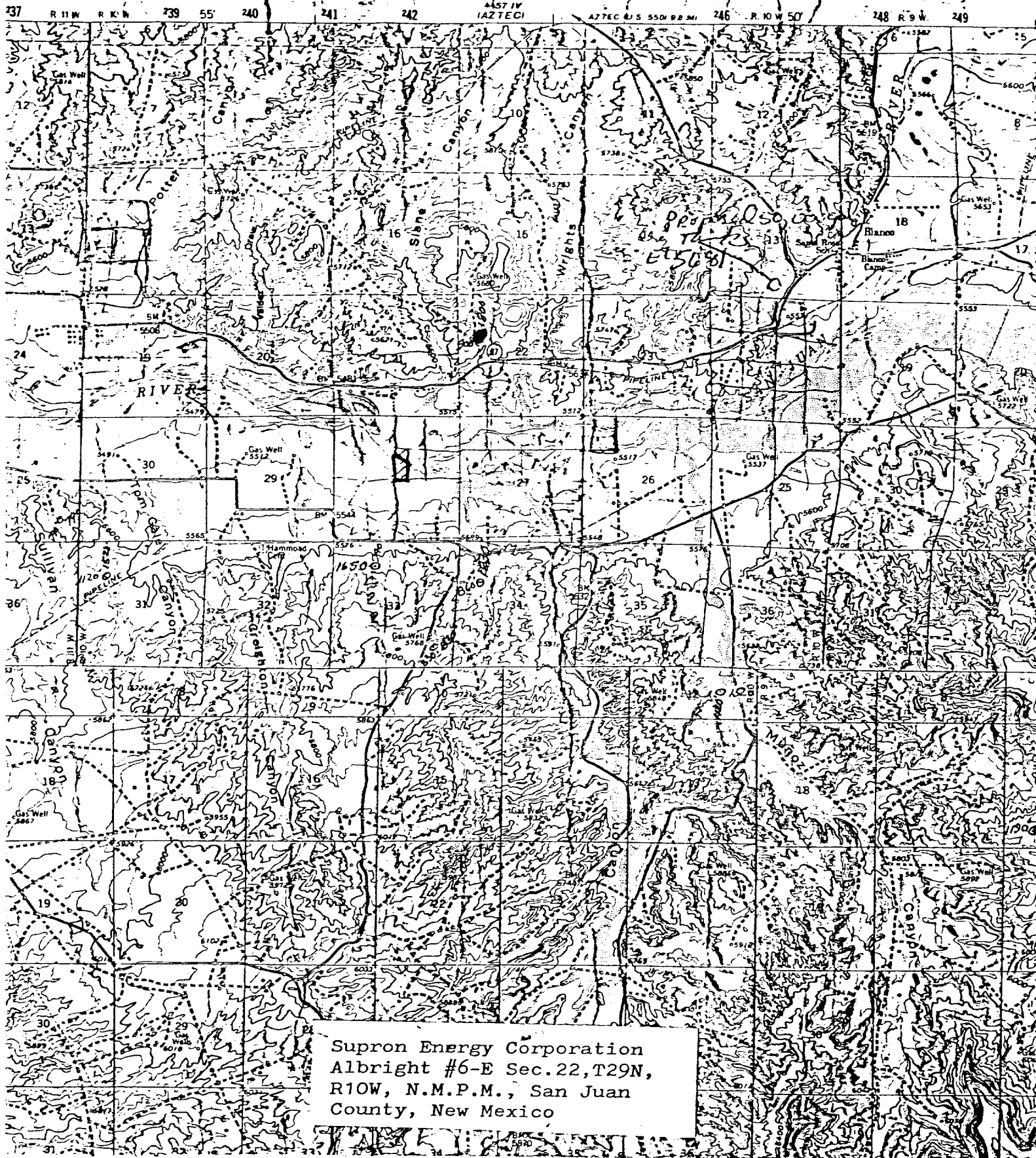
The following attachments are included with this application:

1. Topographical map showing the proposed location and access road.
2. Planned access road is 20 feet wide and 50 feet long approaching the location from the west. No extra materials will be used and the facility will be installed to meet the requirements of NTL-6.
3. Map showing existing producing facilities and access roads.
4. Location of surface equipment if required.
5. Drilling and completion water will be obtained from the San Juan River.
6. All pits will be fenced and constructed in such a way as to prevent litter on the location.
7. We will dispose of all waste by placing it in the reserve pit and burying it when the well is completed.
8. There is no camp at or near the site.
9. There will be no air strip.
10. A plat is attached showing the location of the rig, mud tanks, reserve pit, burn pit and ect.
11. A letter of certification is attached. The operators representative for compliance purposes is Rudy D. Motto, Area Superintendent, P.O. Box 808, Farmington, New Mexico 87401. Phone (505) 325-3587.
12. After the well is completed, the location will be cleaned up and bladed. The reserve pit will be allowed to dry, then be filled and restored to its natural state.
13. The soil is sandy loam with the principal vegetation being juniper, 4 wing saltbush, three-awn, snakeweed, alkali sacaton, rabbitbrush, mormon tea, greasewood and cheatgrass.

SUPRON ENERGY CORPORATION

Albright No. 6-E  
NW ¼ Section 22, T-29N, R-10W, N.M.P.M.  
San Juan County, New Mexico

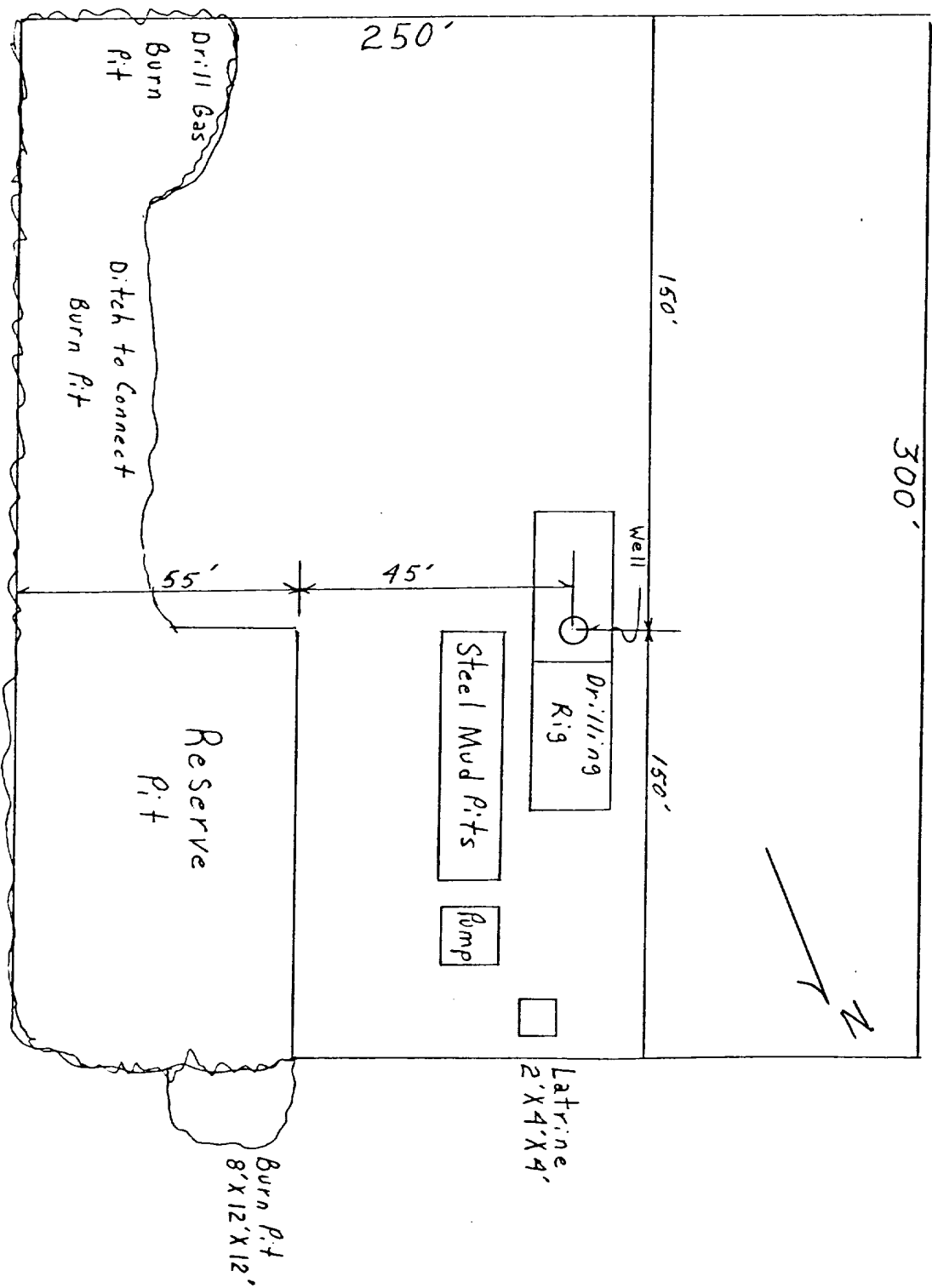
1. The geologic name of the surface formation is "Wasatch".
2. The estimated tops of important geologic markers are:
  - A. Base of Ojo Alamo 450 ft.
  - B. Top of the Fruitland 1730 ft.
  - C. Top of the Pictured Cliffs 1990 ft.
  - D. Top of the Chacra 2980 ft.
  - E. Top of the Cliff House 3580 ft.
  - F. Base of the Greenhorn 6320 ft.
  - G. Top of the Dakota 6385 ft.
3. The estimated depths at which water, oil or mineral bearing formations are expected to be encountered are:
  - A. Base of the Ojo Alamo 450 ft. Water
  - B. Top of the Fruitland 1730 ft. Water
  - C. Top of the Pictured Cliffs 1990 ft. Gas
  - D. Top of the Chacra 2980 ft. Gas
  - E. Top of the Cliff House 3580 ft. Gas
  - F. Top of the Dakota 6385 ft. Gas
4. The casing program is shown on form 9-331C and all casing is new.
5. The lessee's pressure control equipment schematics are attached, along with minimum specifications, testing procedures and frequencies.
6. The type, estimated volumes and characteristics of the circulating medium are as follows:
  - A. 0 - 250 ft. Natural Mud
  - B. 250 - 6700 ft. Permaloid, non dispersed mud containing approximately 200 sx of gel, 80 sx of permaloid and 20 sx of C.M.C.
7. The auxiliary equipment to be used will be floats at the bit and a sub on the floor with a full opening valve to be stabbed into the drill pipe when the kelly is not in the string.
8. This well is in an area which is heavily developed therefore we will not have a testing or coring program. The logging program is as follows:
  - A. E.S. Induction
  - B. Gamma Ray Density
  - C. Gamma Ray Correlation
  - D. Cement Bond
9. We do not expect to find any abnormal pressures, temperatures or hydrogen sulfide problems in this highly developed area.
10. The anticipated starting date for this well is May 15, 1980 dependent on rig availability.

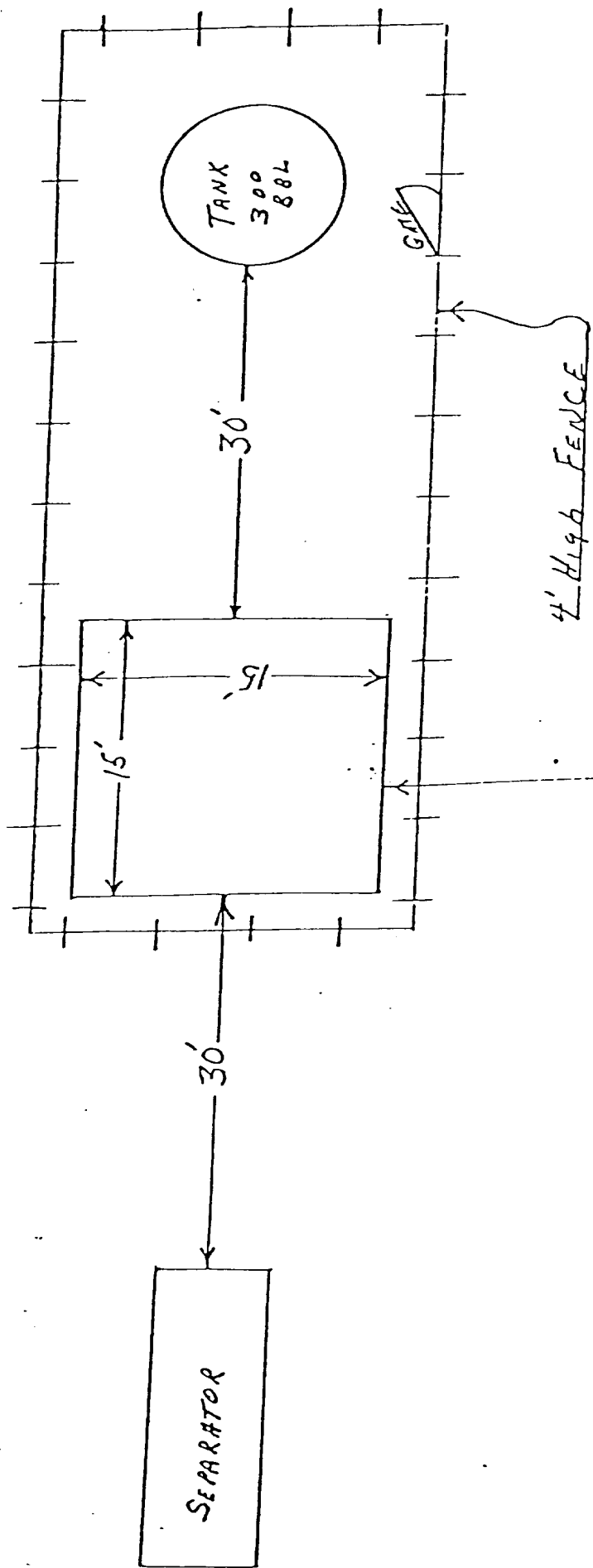


# LOCATION AND EQUIPMENT LAYOUT

SUPRON ENERGY CORPORATION

1800 feet from the North line and 900 feet from the West line  
of Section 22, Township 29 North, Range 10 West, N.M.P.M.,  
San Juan County, New Mexico

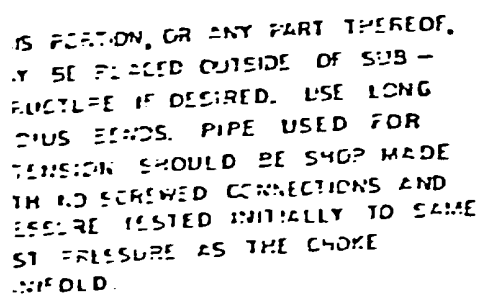




70' WELL HEAD

The B.O.P. and all valve and fittings are rated at 3000 psi working pressure, and hydraulically operated

The B.O.P. and all valve and fittings are rated at 3000 psi working pressure, and hydraulically operated



BLOWOUT PREVENTER HOOKUP

SUPRON ENERGY CORPORATION  
Post Office Box 808  
FARMINGTON, NEW MEXICO 87401

I hereby certify that I, or persons under my direct supervision, have inspected the proposed drillsite and access route; that I am familiar with the conditions which presently exist; that the statements made in this plan are, to the best of my knowledge, true and correct; and, that the work associated with the operations proposed herein will be performed by SUPRON ENERGY CORPORATION and its contractors subcontractors in conformity with this plan and the terms and conditions under which it is approved.

SUPRON ENERGY CORPORATION

A handwritten signature in cursive script, reading "Rudy D. Motto".

Rudy D. Motto  
Area Superintendent  
Phone: 325-3587