

NO. OF COPIES RECEIVED	
DISTRIBUTION	
SANTA FE	
FILE	
U.S.G.S.	
LAND OFFICE	
OPERATOR	

# NEW MEXICO OIL CONSERVATION COMMISSION

30-045-24445

Form C-101  
Revised 1-1-65

5A. Indicate Type of Lease  
STATE ☐ FEE ☒

5. State Oil & Gas Lease No.

## APPLICATION FOR PERMIT TO DRILL, DEEPEN, OR PLUG BACK

1a. Type of Work b. Type of Well OIL WELL <input type="checkbox"/> GAS WELL <input checked="" type="checkbox"/> OTHER <input type="checkbox"/>		DEEPEN <input type="checkbox"/> PLUG BACK <input type="checkbox"/>		SINGLE ZONE <input type="checkbox"/> MULTIPLE ZONE <input checked="" type="checkbox"/>	
2. Name of Operator Tenneco Oil Company		7. Unit Agreement Name		8. Farm or Lease Name Valdez <del>Gas</del> Unit A	
3. Address of Operator 720 So. Colorado Blvd., Denver, Colorado 80222		9. Well No. 1E		10. Field and Pool, or Wildcat Basin Undes. Bloomfield Dakota M.V. Chacra	
4. Location of Well UNIT LETTER G LOCATED 2390 FEET FROM THE North LINE AND 2560 FEET FROM THE East LINE OF SEC. 24 TWP. 29N RGE. 11W NMPM		12. County San Juan		19. Proposed Depth 6380'	
21. Elevations (Show whether DF, RT, etc.) 5474 GR		21A. Kind & Status Plug. Bond nationwide		21B. Drilling Contractor Four Corners	
20. Rotary or C.T. Rotary		22. Approx. Date Work will start July 1980			

23.

## PROPOSED CASING AND CEMENT PROGRAM

SIZE OF HOLE	SIZE OF CASING	WEIGHT PER FOOT	SETTING DEPTH	SACKS OF CEMENT	EST. TOP
12 1/4"	9 5/8"	36#	±250'	Circulate to surface	
8 3/4"	7"	23#	±4700'	Circulate to surface	
6 1/4"	4 1/2"	10.5#	±6380'	Circulate to liner top	

See attached.

The gas is dedicated.

APPROVAL VALID  
FOR 90 DAYS UNLESS  
DRILLING COMMENCED,

EXPIRES 10-8-80



IN ABOVE SPACE DESCRIBE PROPOSED PROGRAM: IF PROPOSAL IS TO DEEPEN OR PLUG BACK, GIVE DATA ON PRESENT PRODUCTIVE ZONE AND PROPOSED NEW PRODUCTIVE ZONE. GIVE BLOWOUT PREVENTER PROGRAM, IF ANY.

I hereby certify that the information above is true and complete to the best of my knowledge and belief.

Signed [Signature] Title Staff Production Analyst Date July 8, 1980

(This space for State Use)

APPROVED BY [Signature] TITLE SUPERVISOR DISTRICT # 3 DATE JUL 10 1980

CONDITIONS OF APPROVAL, IF ANY:

DHC-1

All distances must be from the corner boundaries of the Section.

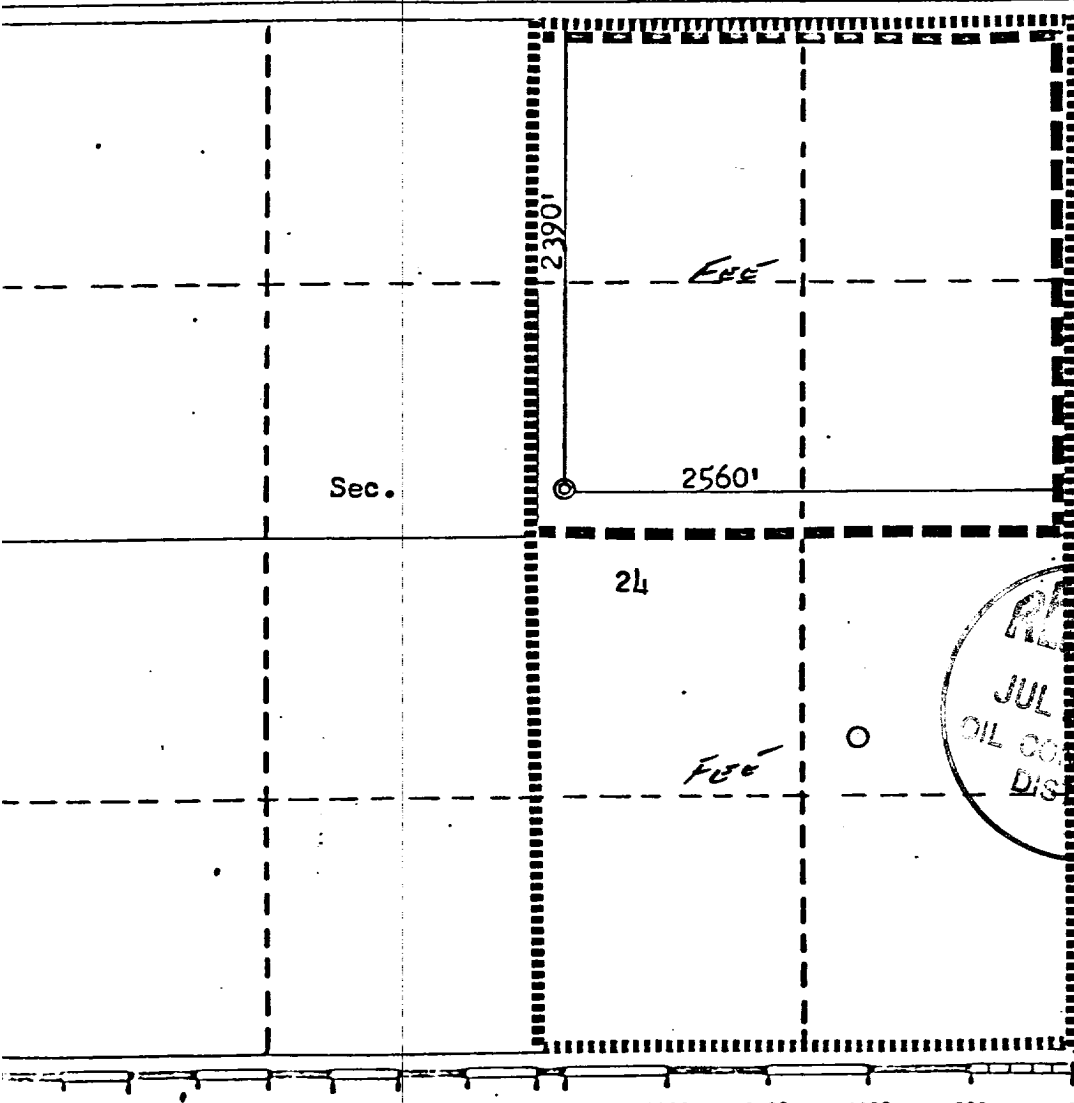
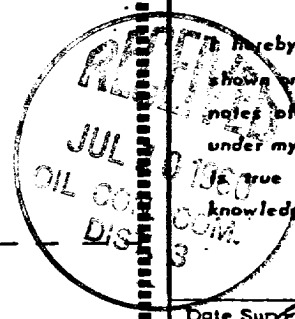
Operator <b>TENNECO OIL COMPANY</b>		Lease <b>VALDEZ GAS UNIT A</b>		Well No. <b>1E</b>	
Well Letter <b>G</b>	Section <b>24</b>	Township <b>29N</b>	Range <b>11W</b>	County <b>San Juan</b>	
Actual Footage Location of Wells: <b>2390</b> feet from the <b>North</b> line and <b>2560</b> feet from the <b>East</b> line					
Ground Level Elev. <b>5474</b>	Producing Formation <b>Dakota, M.V., Chacra</b>		Pool <b>Basin Undesignated Bloomfield Dakota Mesa Verde Chacra</b>	Dedicated Acreage: <b>320/160/160</b> Acres	

1. Outline the acreage dedicated to the subject well by colored pencil or hatchure marks on the plat below.
2. If more than one lease is dedicated to the well, outline each and identify the ownership thereof (both as to working interest and royalty).
3. If more than one lease of different ownership is dedicated to the well, have the interests of all owners been consolidated by communitization, unitization, force-pooling, etc?

☒ Yes ☐ No If answer is "yes," type of consolidation*Communitization in progress*

If answer is "no," list the owners and tract descriptions which have actually been consolidated. (Use reverse side of this form if necessary.)

No allowable will be assigned to the well until all interests have been consolidated (by communitization, unitization, forced-pooling, or otherwise) or until a non-standard unit, eliminating such interests, has been approved by the Commission.

	<b>CERTIFICATION</b>	
	I hereby certify that the information contained herein is true and complete to the best of my knowledge and belief.	
	<i>M. L. Freeman</i>	
	Name	
	M. L. Freeman	
	Position	
	Staff Production Analyst	
	Company	
	Tenneco Oil Company	
	Date	
July 8, 1980		
	I hereby certify that the well location shown on this plat was plotted from field notes or actual surveys made by me or under my supervision, and that the same is true and correct to the best of my knowledge and belief.	
	Date Surveyed	
	June 13, 1980	
	Registered Professional Engineer and/or Land Surveyor	
	<i>Fred B. Kerr Jr.</i>	
Certificate No. 6888, R.		
3950		

TENNECO OIL COMPANY - 10 POINT PLAN

1. The geological name of the surface formation:  
2 & 3. Estimated Formation Tops:  
  
(See Attached Drilling Procedure)
4. Proposed Casing Program:  
  
(See Attached Drilling Procedure)
5. Blowout Preventors:  
Hydraulic double ram. One set of rams will be provided each size drill pipe in the hole. One set of blind rams at all times. Fill line will be 2", kill line will be 2", choke relief line will be 2". BOP's, drills and tests will be recorded in the driller's log. BOP will be tested every 24 hours and recorded in IADC Log.
6. Mud Program: (Sufficient quantity of mud and weight material will be available on location).  
  
(See Attached Drilling Procedure.)
7. Auxiliary Equipment:
  - a. Kelly cock will be in use at all times.
  - b. Stabbing valve to fit drill pipe will be present on floor at all times.
  - c. Mud monitoring will be visual. No abnormal pressures are anticipated.
  - d. Floats at bits.
  - e. Drill string safety valve(s) to fit all pipe in drill string will be maintained on the rig floor while drilling operations are in progress.
8. Coring, Logging, and Testing Program:  
  
(See Attached Drilling Procedure)
9. No abnormal pressures, temperatures or potential hazards such as H<sub>2</sub>S are expected to be encountered.
10. The drilling of this well will start approximately ( July ) and continue for 10 to 12 days.

Your office will be notified of spudding in sufficient time to witness cementing operations. Immediate notice will be given on blowouts, fires, spills, and accidents involving life threatening injuries or loss of life. Prior approval will be obtained before appreciably changing drilling program or commencing plugging operations, plug back work, casing repair work or corrective cementing operations.

TENNECO OIL COMPANY  
ROCKY MOUNTAIN DIVISION  
PENTHOUSE, 720 SOUTH COLORADO BOULEVARD  
DENVER, COLORADO 80222

DRILLING PROCEDURE

DATE: Sept. 4, 1979 - Revised July 1, 1980

LEASE: Valdez Gas Unit

WELL NO.: A-1E

LOCATION: 2390 FNL 2560 FEL  
Sec. 24, T29N, R11W  
San Juan County, N.M.

FIELD: Basin Dakota  
Undesignated Mesa Verde  
Bloomfield Chacra

ELEVATION: 5490 EST GL

TOTAL DEPTH: 6380

PROJECTED HORIZON: CH-MV, commingled & Dakota Dual

SUBMITTED BY: D. J. Kardash DATE: July 2, 1980

APPROVED BY: *John W. Owen* DATE: 7/2/80

JCM/ms

CC: Administration  
DSB Well File  
Field File

# ESTIMATED FORMATION TOPS

GL	5490
OJO	520
PICTURED CLIFFS	1740
CHACRA	2390
CHACRA A	2740
CHACRA B	2840
CLIFFHOUSE	3295
MENEFEE	3395
PT. LOOKOUT	4055
MANCOS	4460
GREENHORN	6000
DAKOTA	6100
TD.	6380

DRILLING, CASING, AND CEMENT PROGRAM

1. MI RURT
2. Drill a 12 1/4" hole to  $\pm 250'$ .
3. RU & run 9 5/8" 36# K-55 STC casing.
4. Cement with sufficient volume to CIRC cement to surface using  $\text{CaCl}_2$  as accelerator.
5. WOC a minimum of 12 hours. Nipple up BOPS, manifold and lines. Pressure test blinds, lines and casing to 1000 PSI for 30 minutes. GIH with drill pipe and test pipe rams to 1000 PSI for 30 minutes. Record all tests on IADC Report Sheet. Drill out.
6. Drill an 8 3/4" hole to  $\pm 4700$  or 250' into the Mancos shale. Treat mud system for possible lost circulation in the Mesa Verde.
7. Log open hole as directed by GE Dept.
8. RU & run 7" 23# K-55 STC to TD, with DV tool at  $\pm 3150'$ . Use cement baskets throughout the MV.
9. Cement first stage with "lite" tailed by 150 SX class B+ 2%  $\text{CaCl}_2$  in sufficient quantity to raise cement to stage tool. Circulate 4 hours through DV and WOC. Cement 2nd stage with "lite" in sufficient volume to raise cement to surface.
10. WOC 18 hours. Set slips and cut off casing. NU BOPS and pressure test. Record tests on IADC Report Sheet. PU 3 1/2 drilling assembly, 6 1/4 bit.
11. Drill to within 5' of shoe. Displace water with nitrogen, nitrogen with gas. Drill a few feet of hole until dusting. Drill with gas to TD.
12. Log open hole as GE Dept. directs.
13. If productive, run 4 1/2 10.5# casing as a liner to TD. Have 150' of overlap in the 7" casing. Make sure this doesn't interfere with Mesa Verde bottom perforations.
14. Cement with sufficient quantity to circulate cement to the liner top.
15. Circulate out excess cement and LDDP.
16. Install tree and fence reserve pit.
17. If non-productive, P & A as <sup>AMOCN</sup>~~USGS~~ requires.

CASING PROGRAM

<u>Interval</u>	<u>Footage</u>	<u>Size</u>	<u>Weight</u>	<u>Grade</u>
0-250	250	9 5/8	36#	K-55 STC
0-4700	4700	7	23#	K-55 STC
4500-6380	1830	4 1/2	10.5#	K-55 STC

### MUD PROGRAM

0-250'	Native solids. Have sufficient viscosity to clean hole and run casing.
250'-4700'	Benex and water. Have sufficient viscosity to run casing.
4700'-6400'	Gas.

### EVALUATION

#### Cores and DST's:

No cores or DST's are anticipated.

#### Deviation Surveys:

1. Survey surface every 100'. Maximum allowable deviation at surface is 1°.
2. From surface to T.D., surveys must be taken every 500', or each trip, whichever is first. This may entail running the TOTCO on wireline. Record surveys on IADC Drilling Report. Maximum allowable change is 1° per 100'.

#### Samples:

As directed.

#### Logs:

1. IND SN-SP-GR
2. FDC-CNL-GR-CAL

### BLOWOUT EQUIPMENT

10", 3000 psi, double ram hydraulic operated with closing unit and 40 gallon accumulator.

10", 150 psi, rotating head and 7" blooie line.

: See Arrangement "C".

## REPORTS

Drilling reports for the past 24 hours will include depth, footage, time distribution, activity breakdown, mud properties, bit record, bottom hole assembly, daily and cumulative mud costs, plus any other pertinent information, will be called into Tenneco Oil Company, Denver, Colorado, between 7:30 a.m. and 8:00 a.m.

1. 303-758-7130 (Office) Don Barnes  
303-758-7287 (Office) Don Barnes' private line, Monday-Friday (before 7:45 a.m.)  
303-936-0704 (Home) Don Barnes, weekends and holidays.
2. George Ramsey (Home) 303-771-5154.
3. John Owen (Home) 303-795-0221.

The yellow sheet of the IADC Report is to be filled out completely. The original copy of the drilling time recorder, and copies of any invoices from this well, signed and received for Tenneco Oil Company, will be mailed daily to:

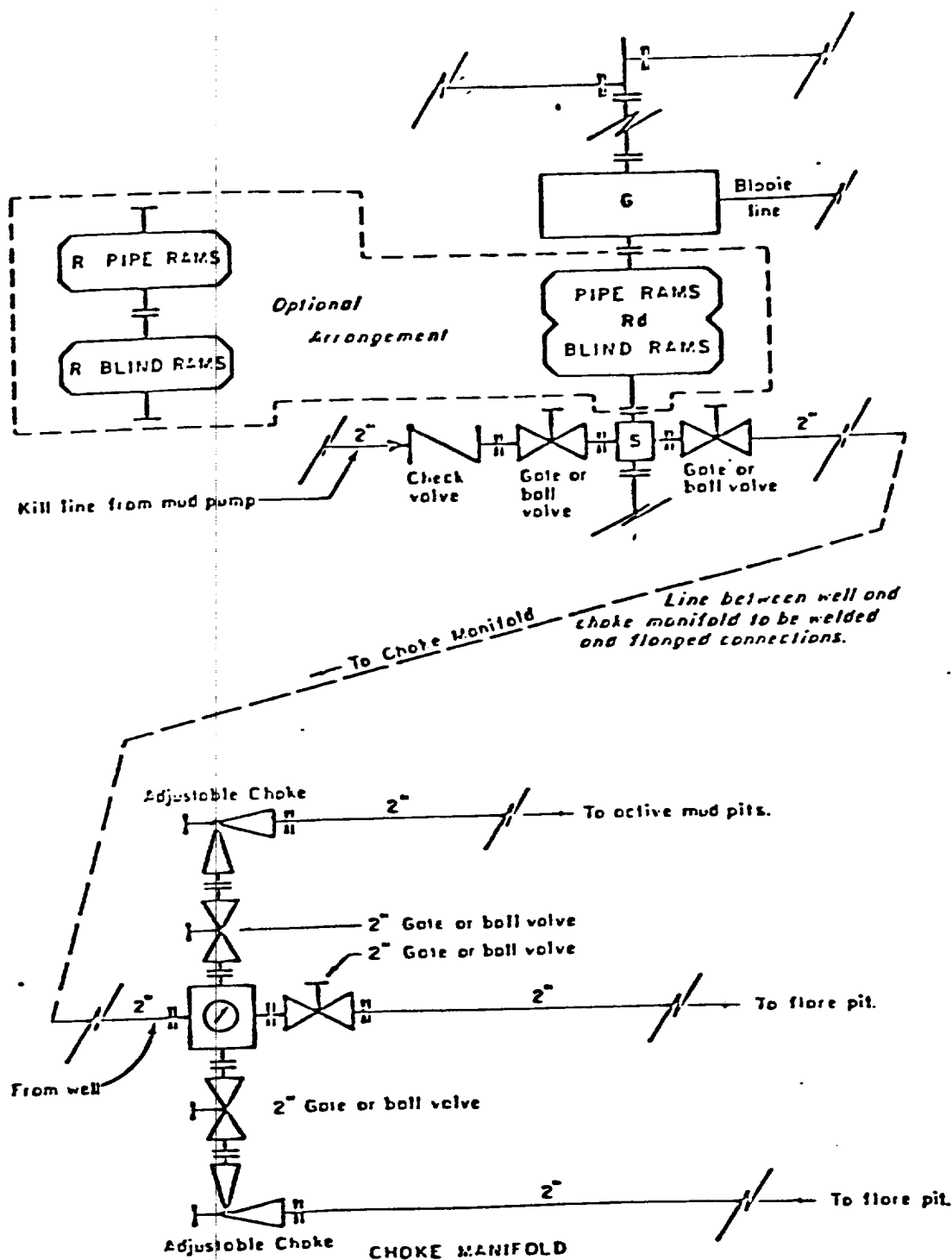
TENNECO OIL COMPANY  
ROCKY MOUNTAIN DIVISION  
PENTHOUSE, 720 SOUTH COLORADO BOULEVARD  
DENVER, COLORADO 80222

ATTENTION: Drilling Department

### IN CASE OF EMERGENCY, NOTIFY THE FOLLOWING:

1. Mr. Don Barnes, Division Drilling Engineer.
2. Mr. George E. Ramsey, Jr., Drilling Engineers Supervisor
3. Mr. John W. Owen, Project Drilling Engineer.
4. Mr. Mike Lacey, Division Production Manager (Home 303-979-0509).



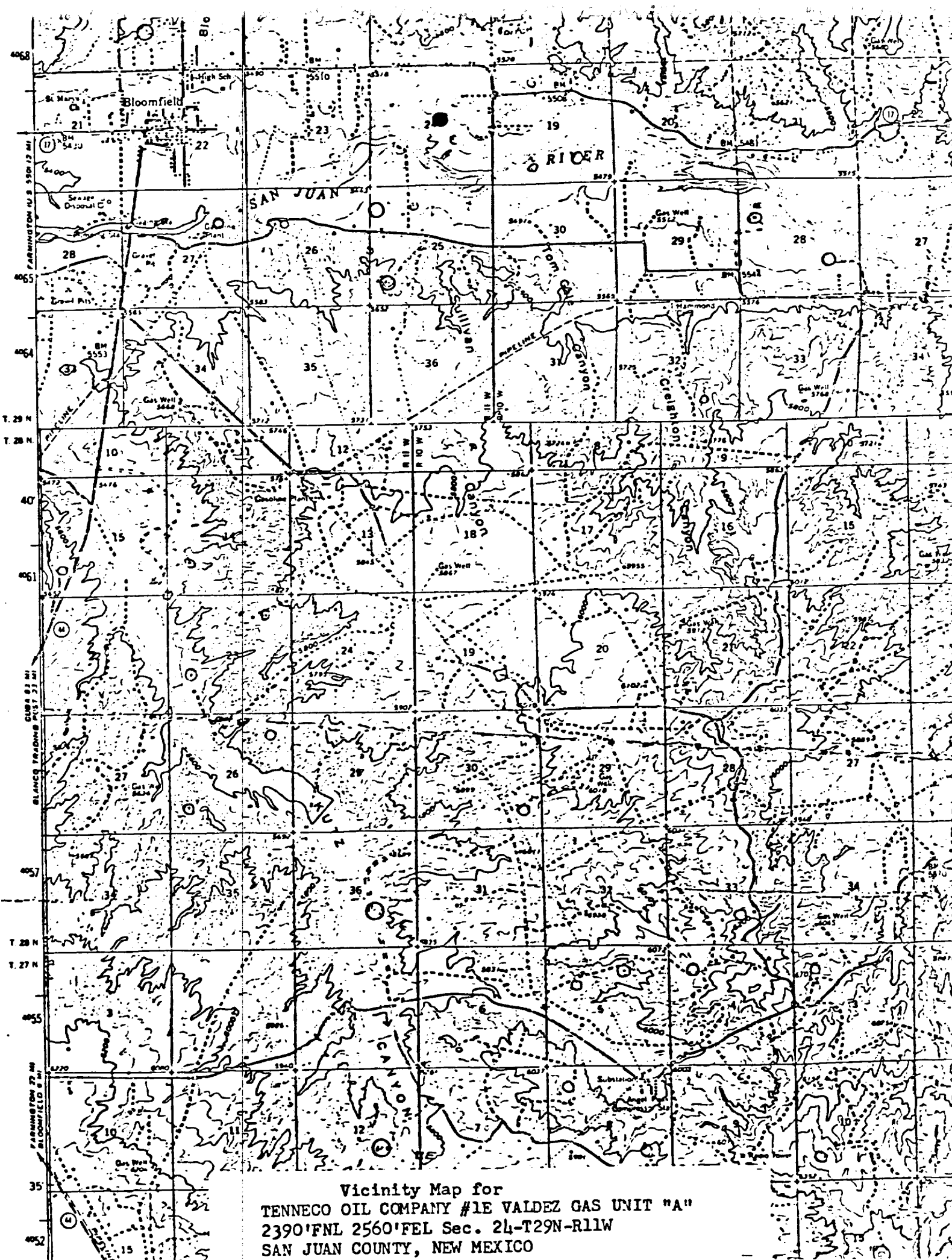


All equipment to be 3,000 psi working pressure except as noted.

- Rd Double ram type preventer with two sets of rams.
- R Single ram type preventer with one set of rams.
- S Drilling spool with side outlet connections for choke and kill lines.
- G Rotating head 150 psi working pressure minimum

#### ARRANGEMENT C

TENNECO OIL COMPANY  
ROCKY MOUNTAIN DIVISION  
REQUIRED MINIMUM  
BLOWOUT PREVENTER AND  
CHOKE MANIFOLD



Vicinity Map for  
TENNECO OIL COMPANY #1E VALDEZ GAS UNIT "A"  
2390'FNL 2560'FEL Sec. 24-T29N-R11W  
SAN JUAN COUNTY, NEW MEXICO