

NO. OF COPIES RECEIVED	
DISTRIBUTION	
SANTA FE	
FILE	
U.S.G.S.	
LAND OFFICE	
OPERATOR	

5A. Indicate Type of Lease  
STATE ☐ FILE ☒

5. State Oil & Gas Lease No.

7. Unit Agreement Lease

8. Name of Lease Name  
Kirtland

9. Well No.  
#6

10. Field and Pool, or Wildcat  
Cha Cha Gallup

12. County  
San Juan

APPLICATION FOR PERMIT TO DRILL, DEEPEN, OR PLUG BACK

1a. Type of Work  
DRILL ☒ DEEPEN ☐ PLUG BACK ☐

b. Type of Well  
OIL WELL ☒ GAS WELL ☐ OTHER ☐ SINGLE ZONE ☒ MULTIPLE ZONE ☐

2. Name of Operator  
Caribou Four Corners, Inc.

3. Address of Operator  
219 Transwestern Bldg., 404 N. 31st St., Billings, Mont. 59101

4. Location of Well  
UNIT LETTER C LOCATED 860 FEET FROM THE North LINE  
AND 2090 FEET FROM THE West LINE OF SEC. 13 TWP. 29N RGE. 15W NEPM

15. Proposed Depth  
4700

19A. Formation  
Gallup

20. Rotary or C.T.  
Rotary

21. Elevations (Show whether D.F., R.I., etc.)  
5138 GL

21A. Kind & Status Plug. Bond  
Statewide

21B. Drilling Contractor  
Undecided

22. Approx. Date Work will start  
July 25, 1980

23. PROPOSED CASING AND CEMENT PROGRAM

SIZE OF HOLE	SIZE OF CASING	WEIGHT PER FOOT	SETTING DEPTH	SACKS OF CEMENT	EST. TOP
12 1/2	8 5/8	24#	350	200	Surface
7 7/8	4 1/2	9.5 & 10.5#	4700	675	Surface

Drill to 350 with 12 1/2" bit and rotary tools. Set approximately 350' 8 5/8" 24# casing with circulating cement to surface. Wait 12 hrs, drill out with 7 7/8" bit to 4700'. Run FDC-CWL, Dual Laterlog to correlate with mud logger. If conditions warrant run 4700' of 4 1/2" casing. BTM 1000' 10.5# remainder 9.5#. Cement casing two stage.  
A. TD-3200' with 250 sx Class "B". 3200-surface with 425 sc cement.  
\* If cable tool is available surface will be set with cable tool.

APPROVAL VALID  
FOR 90 DAYS UNLESS  
DRILLING COMMENCED,  
EXPIRES 10-9-80



IN ABOVE SPACE DESCRIBE PROPOSED PROGRAM; IF PROPOSAL IS TO DEEPEN OR PLUG BACK, GIVE DATA ON PRESENT PRODUCTIVE ZONE AND PROPOSED NEW PRODUCTIVE ZONE. GIVE BLOWOUT PREVENTER PROGRAM, IF ANY.

I hereby certify that the information above is true and complete to the best of my knowledge and belief.

Signed Dennis G. Joust Title Geologist Date July 7, 1980

(This space for State Use)  
APPROVED BY Frank J. Chazy TITLE SUPERVISOR DISTRICT # 3

CONDITIONS OF APPROVAL, IF ANY:

Well C-104 for community

JUL 11 1980

## OIL CONSERVATION DIVISION

P. O. BOX 2088

STATE OF NEW MEXICO  
ENERGY AND MINERALS DEPARTMENT

SANTA FE, NEW MEXICO 87501

Form C-107  
Revised 10-1-78

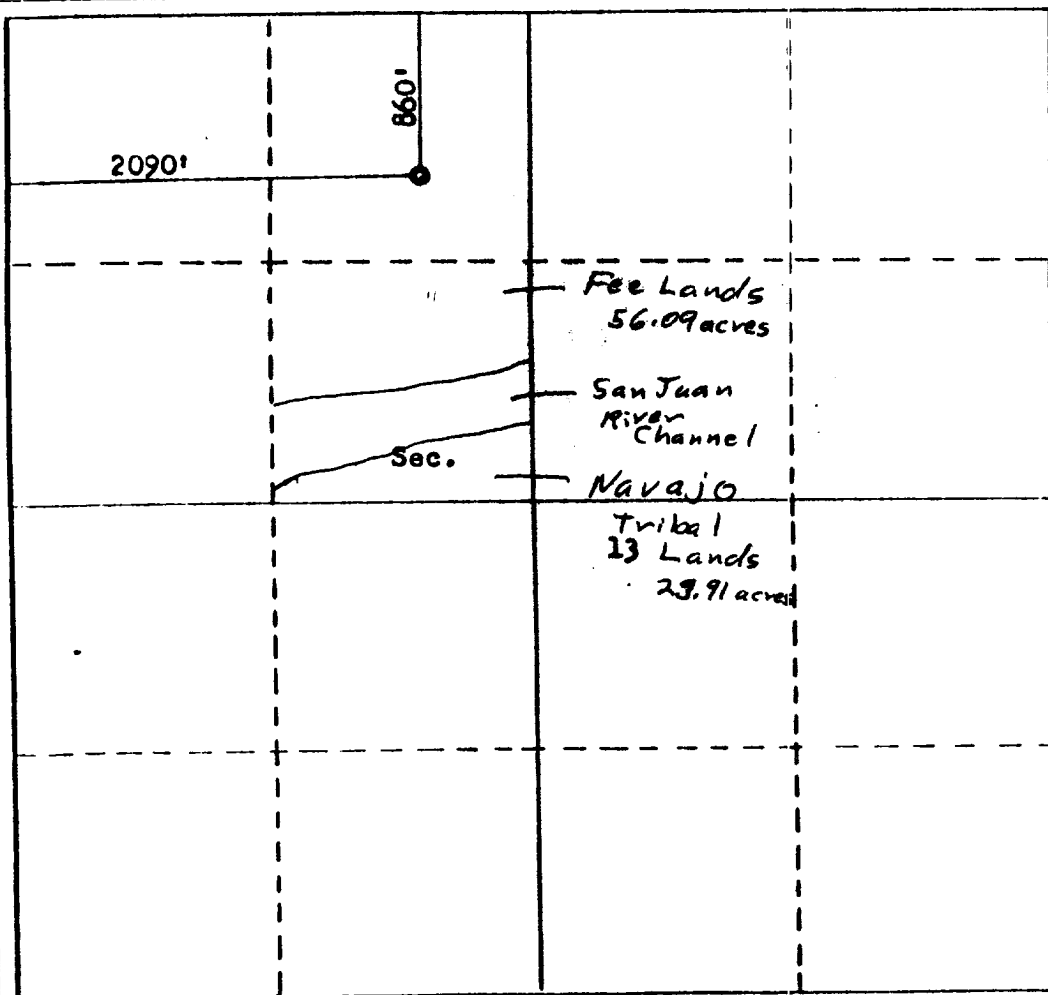
All distances must be from the outer boundaries of the Section.

Operator <b>CARIBOU-FOUR CORNERS INCORPORATED</b>			Lease <b>KIRTLAND</b>		Well No. <b>6</b>
Unit Letter <b>C</b>	Section <b>13</b>	Township <b>29N</b>	Range <b>15W</b>	County <b>San Juan</b>	
Actual Footage Location of Well: <b>860</b> feet from the <b>North</b> line and <b>2090</b> feet from the <b>West</b> line					
Ground Level Elev. <b>5138</b>	Producing Formation <b>Gallup</b>		Pool <b>Cha. Cha Gallup</b>		Dedicated Acreage: <b>80</b> Acres

1. Outline the acreage dedicated to the subject well by colored pencil or hatchure marks on the plat below.
2. If more than one lease is dedicated to the well, outline each and identify the ownership thereof (both as to working interest and royalty).
3. If more than one lease of different ownership is dedicated to the well, have the interests of all owners been consolidated by communitization, unitization, force-pooling, etc?

☐ Yes ☒ No If answer is "yes," type of consolidation \_\_\_\_\_

If answer is "no," list the owners and tract descriptions which have actually been consolidated. (Use reverse side of this form if necessary.) Communitization agreements concerning Navajo Tribal lands south of the San Juan River filed with U.S.G.S.  
No allowable will be assigned to the well until all interests have been consolidated (by communitization, unitization, forced-pooling, or otherwise) or until a non-standard unit, eliminating such interests, has been approved by the Commission.



## CERTIFICATION

I hereby certify that the information contained herein is true and complete to the best of my knowledge and belief.

Name

Geologist

Position

Caribou Four Corners, Inc.

Company

July 8, 1980

Date

I hereby certify that the well location shown on this plat was plotted from field notes of actual surveys made by me or under my supervision, and that the same is true and correct to the best of my knowledge and belief.

Date Surveyed

March 26, 1980

Registered Professional Engineer and/or Land Surveyor

Fred B. Kerr Jr.

Certificate No. 3950

3950