

UNITED STATES
DEPARTMENT OF THE INTERIOR
GEOLOGICAL SURVEY

SUNDRY NOTICES AND REPORTS ON WELLS

(Do not use this form for proposals to drill or to deepen or plug back to a different reservoir. Use Form 9-331-C for such proposals.)

1. oil ☒ well gas ☒ well other ☐
2. NAME OF OPERATOR
Supron Energy Corporation
3. ADDRESS OF OPERATOR
P.O. Box 808, Farmington, New Mexico 87401
4. LOCATION OF WELL (REPORT LOCATION CLEARLY. See space 17 below.)
AT SURFACE: 940 Ft./North; 1650 ft./West line
AT TOP PROD. INTERVAL: Same as above
AT TOTAL DEPTH: Same as above
16. CHECK APPROPRIATE BOX TO INDICATE NATURE OF NOTICE, REPORT, OR OTHER DATA

REQUEST FOR APPROVAL TO:

- TEST WATER SHUT-OFF ☐
FRACTURE TREAT ☐
SHOOT OR ACIDIZE ☐
REPAIR WELL ☐
PULL OR ALTER CASING ☒
MULTIPLE COMPLETE ☒
CHANGE ZONES ☐
ABANDON* ☐

SUBSEQUENT REPORT OF:

- ☐
☐
☐
☐
☐
☐
☐
☐
☐
☐

(other) Move Location 45' West

5. LEASE
SF 080724 A
6. IF INDIAN, ALLOTTEE OR TRIBE NAME
7. UNIT AGREEMENT NAME
8. FARM OR LEASE NAME
Zachry
9. WELL NO.
15-E
10. FIELD OR WILDCAT NAME
Wildcat Gallup - Basin Dakota
11. SEC., T., R., M., OR BLK. AND SURVEY OR AREA
Sec. 33, T-29N, R-10W, N.M.P.M.
12. COUNTY OR PARISH
San Juan
13. STATE
New Mexico
14. API NO.
15. ELEVATIONS (SHOW DF, KDB, AND WD)
5621 GR.

(NOTE: Report results of multiple completion or zone change on Form 9-330.)

17. DESCRIBE PROPOSED OR COMPLETED OPERATIONS (Clearly state all pertinent details, and give pertinent dates, including estimated date of starting any proposed work. If well is directionally drilled, give subsurface locations and measured and true vertical depths for all markers and zones pertinent to this work.)*

We desire to move location 45 feet West of the approved site to make this location legal for a Wildcat Gallup and Dakota zone dual completion (See new attached dedication plat). Change pipe from 4-1/2", 10.50# csg. to 5-1/2", 15.50# csg. to be set at approx 6540 ft. after logging. Cement 1st stage as follows: Bring cmt up to approx 5990 ft. K.B. 550 ft. of 7-7/8" hole X 5-1/2" csg. = 550' X 0.1733 = 95 cu. ft. use 35% for hole washout = slurry volume = 128 cu ft. Run 128 cu ft. cement slurry + shoe jt. volume to bring cement to 5990 ft. This volume may vary depending on caliper of hole after logs are run. 2nd stage - 1st D.V. tool at approx 5410 ft. Cement to cover Mesaverde: 5410 ft. to 3300 ft. = 2110' X 0.1733 = 366 cu. ft. use 50% excess for hole washout - slurry volume 550 cu ft. to bring cement to 3300 ft. 3rd stage - 2nd D.V. tool at approx 3040 ft. Cement with approx 200 sx of 65-35 followed by 50 sx of class "B" cement and cover the Ojo Alamo zone. Pressure test the casing. Perforate and fracture the Dakota zone and set a bridge plug above the Dakota zone. (Con't - See Attachment)

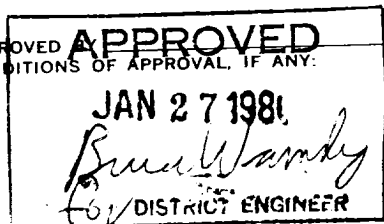
Subsurface Safety Valve: Manu. and Type _____ Set @ _____ Ft.

18. I hereby certify that the foregoing is true and correct

SIGNED Rudy D. Motto TITLE Area Supt. DATE January 14, 1981

(This space for Federal or State office use)

APPROVED
CONDITIONS OF APPROVAL, IF ANY:



TITLE _____ DATE _____

*See Instructions on Reverse Side

NMCCO

Perforate and fracture the Gallup zone. Clean the Gallup zone up. Pull the bridge plug and clean the Dakota zone up. Run a production packer on 2-1/16" tubing and set above the Dakota zone. Run a second string of 2-1/16" tubing and land in the Gallup zone. Nipple down the wellhead and test the packer for leakage. Test the Dakota zone. Test the Gallup zone. Connect to a gathering system.

The product from this well have previously been committed to a transporter.

All distances must be from the outer boundaries of the Section

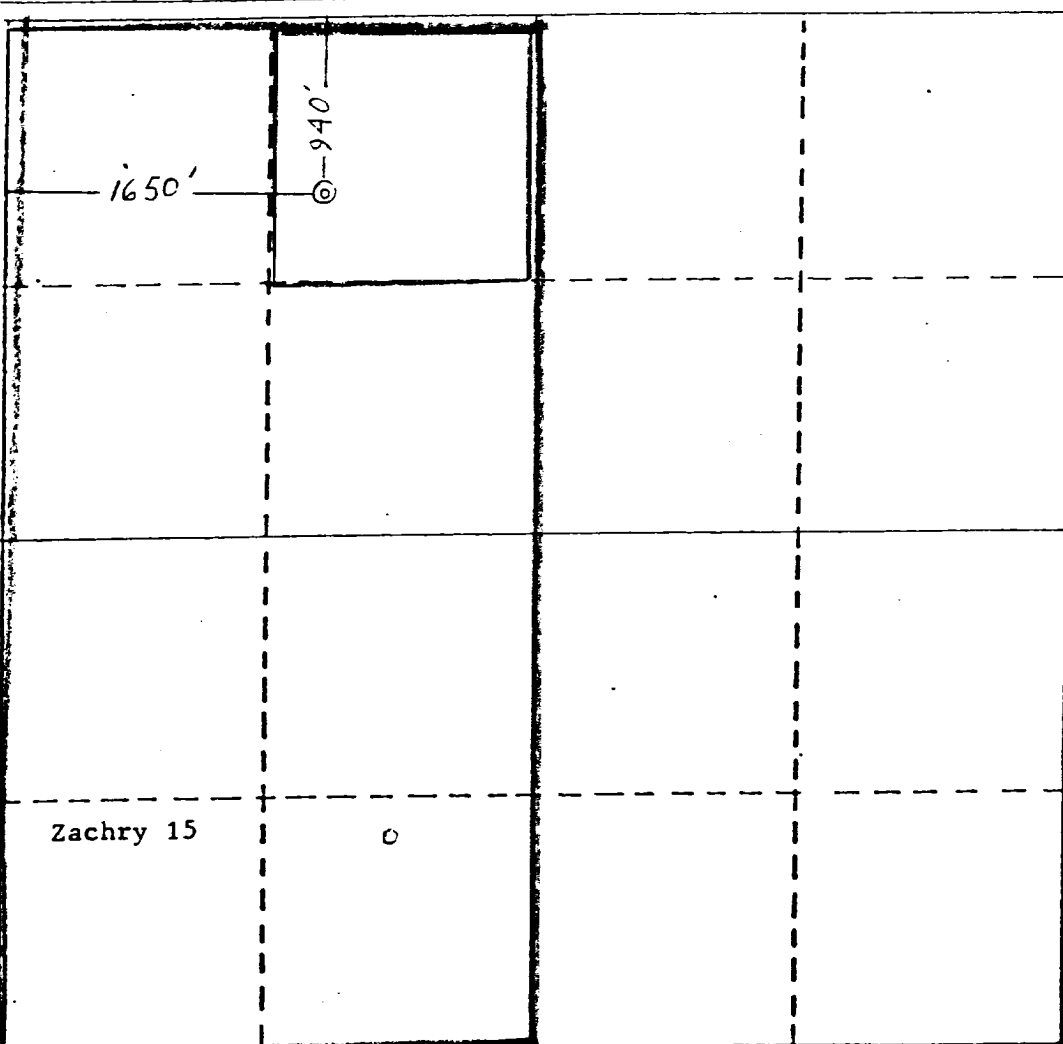
Operator SUPRON ENERGY CORPORATION			Lease ZACHRY		Well No. 15-E
Unit Letter C	Section 33	Township 29 NORTH	Range 10 WEST	County SAN JUAN	
Actual Well Location of Well:					
940	feet from the	NORTH	line and	1650	feet from the
					WEST
Ground Level Elev. 5621	Producing Formation GALLUP DAKOTA		Pool WILDCAT BASIN	NE 81 NW/4 40.00 W/2 320 Acres	

1. Outline the acreage dedicated to the subject well by colored pencil or hatchure marks on the plat below.
2. If more than one lease is dedicated to the well, outline each and identify the ownership thereof (both as to working interest and royalty).
3. If more than one lease of different ownership is dedicated to the well, have the interests of all owners been consolidated by communitization, unitization, force-pooling, etc?

☐ Yes ☐ No If answer is "yes," type of consolidation _____

If answer is "no," list the owners and tract descriptions which have actually been consolidated. (Use reverse side of this form if necessary.) _____

No allowable will be assigned to the well until all interests have been consolidated (by communitization, unitization, forced-pooling, or otherwise) or until a non-standard unit, eliminating such interests, has been approved by the Division.



CERTIFICATION

I hereby certify that the information contained herein is true and complete to the best of my knowledge and belief.

Rudy D. Motto

Name

Rudy D. Motto

Position

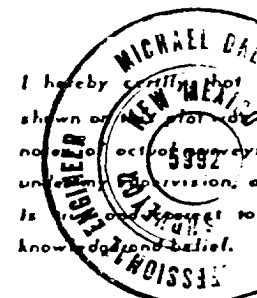
Area Superintendent

Company

Supron Energy Corporation

Date

January 13, 1981



I hereby certify that the well location shown on the plat is as plotted from field notes of actual surveys made by me or under my supervision, and that the same is correct to the best of my knowledge and belief.

Date Surveyed

February 20, 1980

Registered Professional Engineer and/or Land Surveyor

Michael Daly

Certificate No.

