

UNITED STATES
DEPARTMENT OF THE INTERIOR
BUREAU OF LAND MANAGEMENT

200 MAY 24 PM 12:06

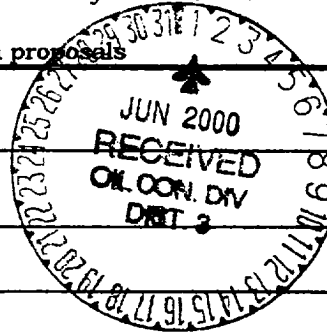
FORM APPROVED
Budget Bureau No. 1004-0135
Expires: March 31, 1993

SUNDRY NOTICES AND REPORTS ON WELLS

Do not use this form for proposals to drill or to deepen or reentry to a different reservoir.

Use "APPLICATION FOR PERMIT---" for such proposals

SUBMIT IN TRIPPLICATE



1. Type of Well

☐ Oil ☒ Gas ☐ Other

2. Name of Operator

D.J. Simmons Inc.

3. Address and Telephone No.

3005 Northridge Dr. Suite L, Farmington NM 87401 (505) 326-3753

4. Location of Well (Footage, Sec., T., R., M., or Survey Description)

1750' FSL x 1690' FEL, Section 29, T29N, R9W

Proposed Bottom Hole Location:

710' FSL x 710' FEL, Section 29, T29N, R9W

5. Lease Designation and Serial No.
SF-080245-B

6. If Indian, Allottee or Tribe Name
N/A

7. If Unit or CA, Agreement Designation

8. Well Name and No. #1A

L.V. Hamner B1A

9. API Well No.

30-045-24488

10. Field and Pool, or Exploratory Area
Blanco Mesa Verde

11. County or Parish, State
San Juan County, New Mexico

12. CHECK APPROPRIATE BOX(S) TO INDICATE NATURE OF NOTICE, REPORT, OR OTHER DATA

TYPE OF SUBMISSION

☒ Notice of Intent

☐ Subsequent Report

☐ Final Abandonment Notice

TYPE OF ACTION

☐ Abandonment

☐ Recompletion

☐ Plugging Back

☐ Casing Repair

☐ Altering Casing

☒ Other Side Track

☐ Change of Plans

☐ New Construction

☐ Non-Routine Fracturing

☐ Water Shut-Off

☐ Conversion to Injection

☐ Dispose Water

(Note: Report results of multiple

Completion or Recompletion Report and

completion on Well

Log form.)

13. Describe Proposed or Completed Operations (Clearly state all pertinent details, and give pertinent dates, including estimated date of starting any proposed work. If well is directionally drilled, give subsurface locations and measured and true vertical depth for all markers and zones pertinent to this work.)*

D. J. Simmons Company proposes to sidetrack this well as per the attached procedure. Both the sidetrack hole and the original completion will be produced from this well bore

14. I hereby certify that the foregoing is true and correct

Signed Robert R. Griffie
Robert R. Griffie

Title; Operations Engineer

Date: 5/15/00

(This space for Federal or State office use)

Approved by

Title

Date

Conditions of approval, if any:

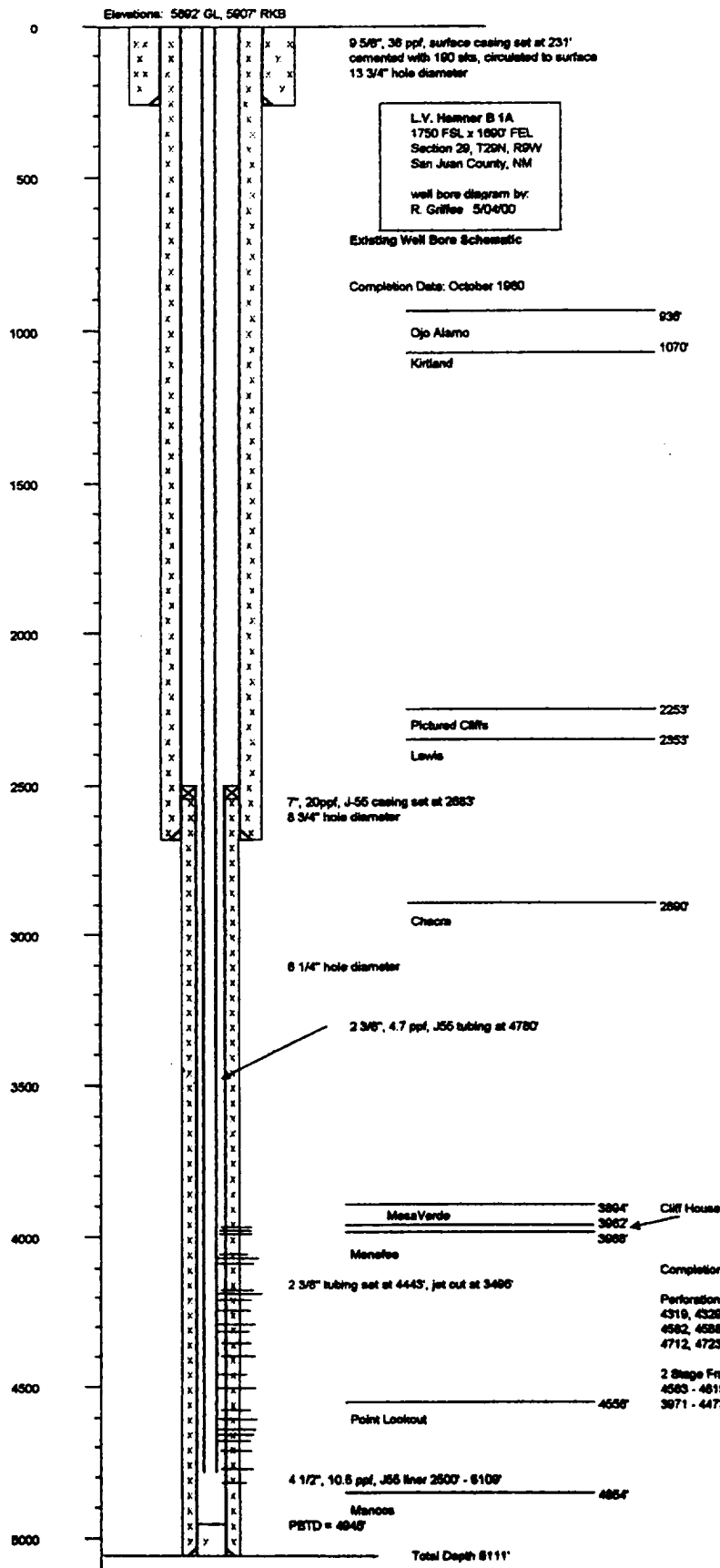
Title 18 U.S.C. Section 1001, makes it a crime for any person knowingly and willfully to make to any department or agency of the United States any false, fictitious or fraudulent statements or representations as to any matter within its jurisdiction.

*See Instruction on Reverse Side

L.V. Hamner B1A
Proposed Sidetrack Operation

General Procedure

1. MIRU specially equipped pulling unit, Key Rig 38, with PZ7 pump, pit, and 3.5 swivel.
2. ND well head, NU BOPE. Pressure test BOPE to 2000 psi.
3. Run CBL/GR correlation log from PBTD to 2000'. Confirm Pictured Cliff depths from Gamma Ray. Run multishot survey from PBTD to surface.
4. Set retrievable bridge plug at 2485'. Spot 15' of sand on top of plug.
5. Using fresh water / polymer drilling fluid, section mill window in 7" casing from 2380' to 2460'.
6. Set class 'b' cement kick off plug from 2460' to 2330'. WOC as per lab testing, for cement to attain acceptable compressive strength.
7. Pick up 4 3/4", drill collars, 2 7/8" AOH drill pipe, and mill tooth bit.
8. Time drill cement to top of window at 2380'. Insure cement compressive strength is acceptable.
9. Circulate hole clean, TOH.
10. Pick up directional drilling kick-off assembly and 6 1/4" bit. RU wireline gyro system. TIH.
11. Drill out of 7" casing, using 2%KCL/polymer mud system, and surveying with the gyro. Build angle at 6 degrees/100 ft to approximately 45 degrees. When adequate departure from the existing casing strings has been achieved to eliminate magnetic interference, begin surveying and steering with a single shot instrument. Also change drilling fluids to air/air mist at this depth.
12. Drill 45 degree (+/-) directional hole through the MesaVerde to 5100' TVD, using air / air mist. Exact directional well plan is forthcoming.
13. Run 4 1/2", 10.5 ppf, J55, LTC casing to TD, in new side track hole. Install stage collar 200 feet below sidetrack window depth (approximately 2660').
14. Cement first stage from TD to stage collar, using 65/35 poz plus 6% gel, followed by class 'b' neat slurry to be placed across the MesaVerde section. Cement 2nd stage from stage collar to 2280' with class 'b' neat slurry. WOC as per pilot test.
15. PU 3 3/4" mill tooth bit, six 3 1/8" drill collars and 2 3/8" tubing. Clean out through stage collar to PBTD. POOH.
16. Run cased hole Nuetron (GSL) log from PBTD to window. Run CBL/GR correlation log from PBTD to TOC.
17. Complete the MesaVerde with slick water hydraulic frac. 3 frac stages are anticipated. Precise completion procedure will be determined after reviewing GSL log.
18. Swab and flow well in. Produce well until load is recovered and production stream is clean.
19. Set retrievable bridge plug in 4 1/2" sidetrack casing at 2600' +/- . Spot sand on top of plug.
20. Jet cut the sidetrack 4 1/2" casing at the top of the cement (4 1/2" x 7" annulus), approximately 2280'. POOH and lay down casing.
21. PU stiff stabilized mill assembly, 61/4" OD, and RIH with 2 7/8" drill pipe and 4 3/4" drill collars. Mill out 4 1/2" casing and cement from 2280 through the sidetrack window, and clean out to the bridge plug set in the 7" casing at 2485'. Round trip 7" casing scraper to the bridge plug. Circulate hole clean. Retrieve bridge plug.
22. PU 4 1/2" bridgeplug retrieving assy. Bend bottom joint of tubing. TIH with 2 3/8" EUE tubing. Deflect down sidetrack hole using bent joint. Retrieve bridgeplug set in 4 1/2" side track casing. POOH.
23. Run 2 3/8", 4.7 ppf, NUE tubing from surface to 4443' down original well bore, install deflector at 2460'. Swab well in. Land tubing.
24. Run 2 3/8", EUE tubing with SN one joint from bottom into sidetrack casing. Land tubing near bottom perforations.
25. Return well to production.



District I
1625 N. French Dr., Hobbs, NM 88240

District II
811 South First, Artesia, NM 88210

District III
1000 Rio Brazos Rd., Aztec, NM 87410

District IV
2040 South Pacheco, Santa Fe, NM 87505

State of New Mexico
Energy, Minerals & Natural Resources Department

OIL CONSERVATION DIVISION
2040 South Pacheco
Santa Fe, NM 87505

Form C-102
Revised March 17, 1999

Submit to Appropriate District Office
State Lease - 4 Copies
Fee Lease - 3 Copies

200 MAY 24 PM 12:00

☐ AMENDED REPORT

WELL LOCATION AND ACREAGE DEDICATION PLAT

¹ API Number 30-045-24488	² Pool Code 72319	³ Pool Name Blanco Mesa Verde
⁴ Property Code 010167	⁵ Property Name L.V. Hamner "B"	⁶ Well Number 001A
⁷ OGRID No. 005578	⁸ Operator Name D.J. Simmons Inc.	⁹ Elevation 5892' GL

¹⁰ Surface Location

UL or lot no. J	Section 29	Township T29N	Range R9W	Lot Idn	Feet from the 1750	North/South line FSL	Feet from the 1690	East/West line FEL	County San Juan
--------------------	---------------	------------------	--------------	---------	-----------------------	-------------------------	-----------------------	-----------------------	--------------------

¹¹ Bottom Hole Location If Different From Surface

UL or lot no. P	Section 29	Township T29N	Range R9W	Lot Idn	Feet from the 710	North/South line FSL	Feet from the 710	East/West line FEL	County San Juan
--------------------	---------------	------------------	--------------	---------	----------------------	-------------------------	----------------------	-----------------------	--------------------

¹² Dedicated Acres 320	¹³ Joint or Infill	¹⁴ Consolidation Code	¹⁵ Order No.
--------------------------------------	-------------------------------	----------------------------------	-------------------------

NO ALLOWABLE WILL BE ASSIGNED TO THIS COMPLETION UNTIL ALL INTERESTS HAVE BEEN CONSOLIDATED OR A NON-STANDARD UNIT HAS BEEN APPROVED BY THE DIVISION

16										¹⁷ OPERATOR CERTIFICATION <i>I hereby certify that the information contained herein is true and complete to the best of my knowledge and belief</i> Robert R. Griffie Signature Printed Name, Robert R. Griffie Title, Operations Engineer Date, 5/16/00
										¹⁸ SURVEYOR CERTIFICATION <i>I hereby certify that the well location shown on this plat was plotted from field notes of actual surveys made by me or under my supervision, and that the same is true and correct to the best of my belief.</i> Date of Survey Signature and Seal of Professional Surveyor:

1750'

1690'

B1A
Surface Location

Sidetrack
BHL 710

710

Certificate Number