

UNITED STATES
DEPARTMENT OF THE INTERIOR
GEOLOGICAL SURVEY

30-145-24535-

5. LEASE DESIGNATION AND SERIAL NO.

SF 080724-A

6. IF INDIAN, ALLOTTEE OR TRIBE NAME

7. UNIT AGREEMENT NAME

8. FARM OR LEASE NAME

Zachry

9. WELL NO.

23

10. FIELD AND POOL, OR WILDCAT

Bloomfield Chacra Extension

11. SEC., T., R., M., OR BLK.
AND SURVEY OR AREA

Sec. 34, T-29N, R-10W, NMP

12. COUNTY OR PARISH

San Juan

13. STATE

New Mexico

APPLICATION FOR PERMIT TO DRILL, DEEPEN, OR PLUG BACK

1a. TYPE OF WORK

DRILL ☒DEEPEN ☐PLUG BACK ☐

b. TYPE OF WELL

OIL
WELL ☐GAS
WELL ☒

OTHER

SINGLE
ZONE ☒MULTIPLE
ZONE ☐

2. NAME OF OPERATOR

SUPRON ENERGY CORPORATION

3. ADDRESS OF OPERATOR

P.O. Box 808, Farmington, New Mexico 87401

4. LOCATION OF WELL (Report location clearly and in accordance with any State requirements.)*

At surface

1120 feet from the South line and 1120 feet from the West line

At proposed prod. zone

Same as above.

14. DISTANCE IN MILES AND DIRECTION FROM NEAREST TOWN OR POST OFFICE*

3.5 miles southwest of Blanco, New Mexico

15. DISTANCE FROM PROPOSED*

LOCATION TO NEAREST 1120 feet

PROPERTY OR LEASE LINE, FT.
(Also to nearest drlg. unit line, if any)

1120 feet

16. NO. OF ACRES IN LEASE

2284.30

17. NO. OF ACRES ASSIGNED
TO THIS WELL160.00 SW $\frac{1}{4}$

18. DISTANCE FROM PROPOSED LOCATION*

TO NEAREST WELL, DRILLING, COMPLETED,
OR APPLIED FOR, ON THIS LEASE, FT.

168 feet

19. PROPOSED DEPTH

3130 ft.

20. ROTARY OR CABLE TOOLS

Rotary

21. ELEVATIONS (Show whether DF, RT, GR, etc.)

5707 feet Gr.

22. APPROX. DATE WORK WILL START*

September 28, 1980

23. PROPOSED CASING AND CEMENTING PROGRAM

SIZE OF HOLE	SIZE OF CASING	WEIGHT PER FOOT	SETTING DEPTH	QUANTITY OF CEMENT
9-7/8"	7-5/8"	26.40	200 ft.	150 sx circulated
6-3/4"	2-7/8"	6.50	3130 ft.	395 sx cover Ojo Alamo

This action is subject to administrative
appeal pursuant to 43 CFR 161.100.

We plan to drill 9-7/8" hole to approximately 200 ft. Run 7-5/8" surface casing and cement the casing in place. The cement will be circulated to the surface. Pressure test the casing. Drill 6-3/4" hole to T.D. of approximately 3130 feet. Run 2-7/8" casing and cement the casing w/395 sx. Perforate the casing in the Chacra zone and fracture the formation to stimulate production. Clean the well up. Nipple down the wellhead. Test the well and connect to a gathering system.

This gas has previously been dedicated to a transporter.

RECEIVED

JUL 29 1980

U.S. GEOLOGICAL SURVEY

IN ABOVE SPACE, DESCRIBE PROPOSED PROGRAM: If proposal is to deepen or plug back, give data on present productive zone and proposed new productive zone. If proposal is to drill or deepen directionally, give pertinent data on subsurface locations and measured and true vertical depths. Give blowout preventer program, if any.

24.

SIGNED

Rudy D. Matts

TITLE Area Superintendent

DATE July 29, 1980

(This space for Federal or State office use)

PERMIT NO.

APPROVAL DATE

APPROVED BY

TITLE

DATE

CONDITIONS OF APPROVAL, IF ANY:

h 3 a

UNLOCK

**NEW MEXICO OIL CONSERVATION COMMISSION
WELL LOCATION AND ACREAGE DEDICATION PLAT**

Form C-102
Supersedes C-128
Effective 1-1-65

All distances must be from the outer boundaries of the Section.

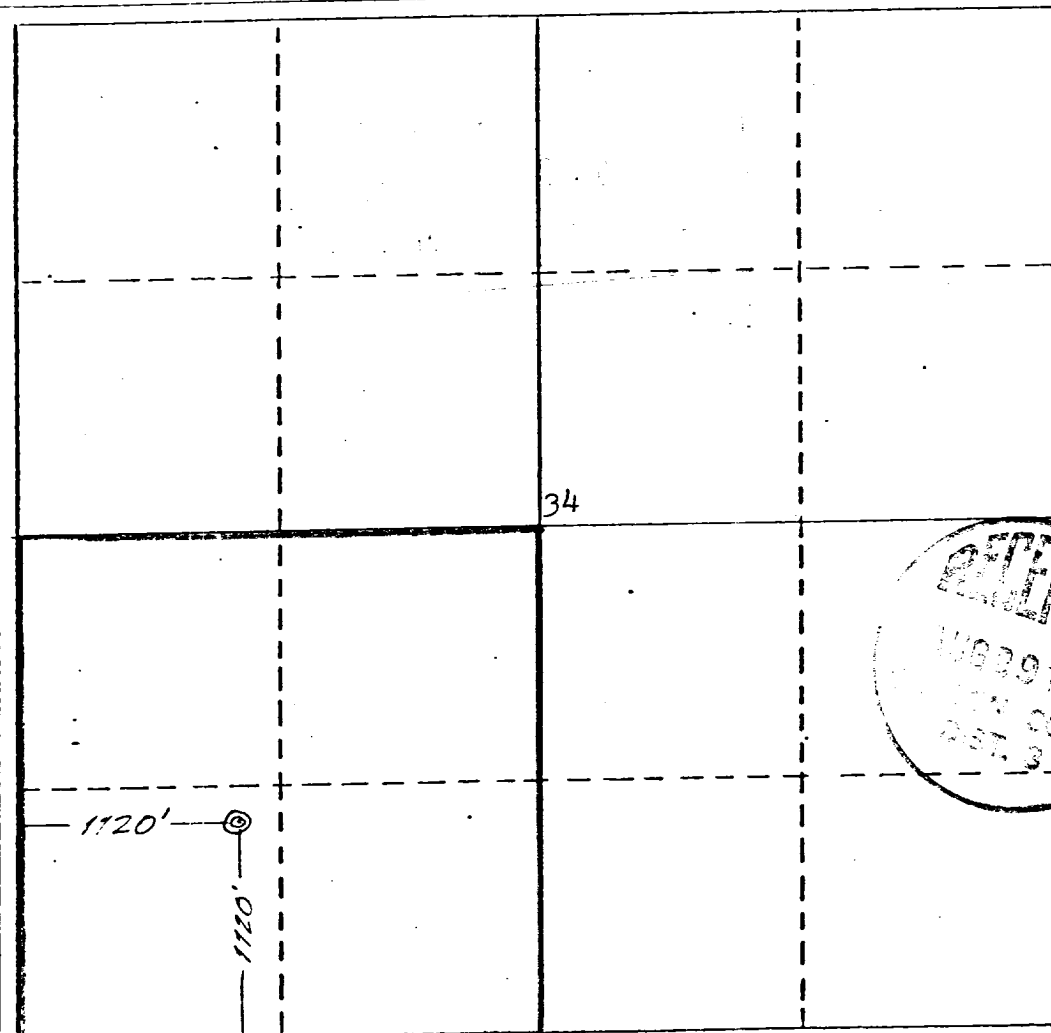
Operator SUPRON ENERGY CORPORATION			Lease ZACHRY		Well No. 23
Unit Letter M	Section 34	Township 29 NORTH	Range 10 WEST	County SAN JUAN	
Actual Footage Location of Well: <div style="display: flex; justify-content: space-between;"> 1120 feet from the SOUTH line and 1120 feet from the WEST line </div>					
Ground Level Elev. 5707	Producing Formation Chacra	Pool Bloomfield Extension		Dedicated Acreage: SW 1/4 160.00 Acres	

1. Outline the acreage dedicated to the subject well by colored pencil or hatchure marks on the plat below.
2. If more than one lease is dedicated to the well, outline each and identify the ownership thereof (both as to working interest and royalty).
3. If more than one lease of different ownership is dedicated to the well, have the interests of all owners been consolidated by communitization, unitization, force-pooling, etc?

☐ Yes ☐ No If answer is "yes," type of consolidation _____

If answer is "no," list the owners and tract descriptions which have actually been consolidated. (Use reverse side of this form if necessary.) _____

No allowable will be assigned to the well until all interests have been consolidated (by communitization, unitization, forced-pooling, or otherwise) or until a non-standard unit, eliminating such interests, has been approved by the Commission.



CERTIFICATION

I hereby certify that the information contained herein is true and complete to the best of my knowledge and belief.

Rudy D. Motto
Name

Rudy D. Motto

Position

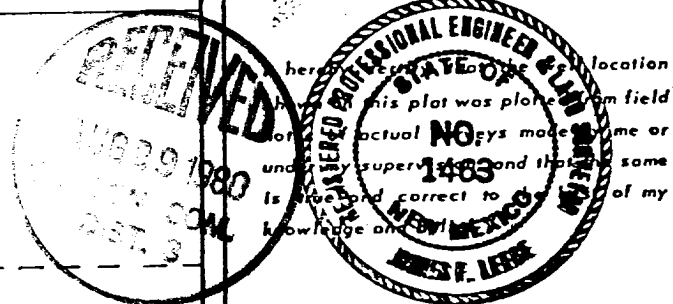
Area Superintendent

Company

SUPRON ENERGY CORPORATION

Date

July 15, 1980



Date Surveyed

June 19, 1980

Registered Professional Engineer
and/or Land Surveyor

James P. Leese
James P. Leese

Certificate No.

1463

0 330 660 990 1320 1650 1980 2310 2640 2970 3300 3630 3960 4290 4620 4950 5280 5610 5940 6270 6600

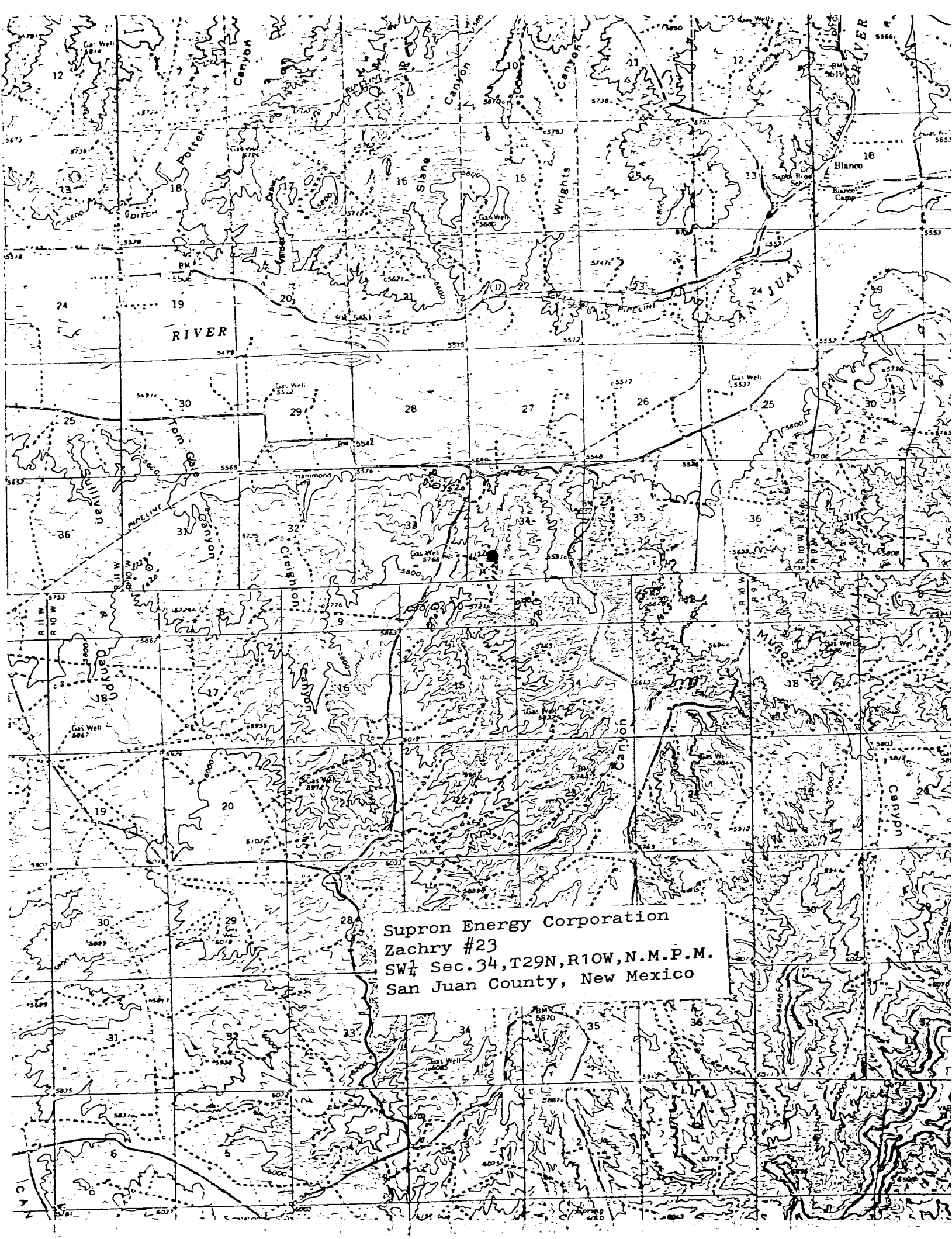
SUPRON ENERGY CORPORATION
ZACHRY No. 23
SW $\frac{1}{4}$ Sec. 34, T-29N, R-10W, N.M.P.M.
San Juan County, New Mexico

1. The Geologic name of the surface formation is "Wasatch".
2. The estimated tops of important Geologic markers are:
 - A. Top of the Ojo Alamo - - - - - 790 ft.
 - B. Top of the Fruitland - - - - - -1680 ft.
 - C. Top of the Pictured Cliffs - - - - - -1925 ft.
 - D. Top of the Chacra- - - - - -2930 ft.
3. The estimated depth at which anticipated water, oil or other mineral bearing formations are expected to be encountered are:
 - A. Top of the Ojo Alamo - - - - - 790 ft. - - Water
 - B. Top of the Fruitland - - - - - -1680 ft. - - Water
 - C. Top of the Pictured Cliffs - - - - - -1925 ft. - - Gas
 - D. Top of the Chacra - - - - - -2930 ft. - - Gas
4. The casing program is shown on 9-331C and all casing is new.
5. The lessee's pressure control equipment schematics are attached along with minimum specifications, testing procedures and frequencies.
6. The type, estimated volumes and characteristics of the circulating medium are as follows:
 - A. 0 - 200 ft. Natural mud
 - B. 200 - 3130 ft. Permaloid non dispersed mud containing approx. 67 sx of Permaloid and 10 sx of C.M.C.
7. The auxiliary equipment will be floats at the bit and a sub on the floor with a full opening valve to be stabbed into the drill pipe when the kelly is not in the string.
8. This well is in an area which is heavily developed; therefore we will not have a testing or coring program. The logging program is as follows:
 - A. E.S. Induction
 - B. Gamma Ray Density
 - C. Gamma Ray Correlation
 - D. Cement Bond or Temperature
9. We do not expect to find any abnormal pressures, temperatures or hydrogen sulfide problems in this heavily developed area.
10. The anticipated starting date for this well is September 28, 1980 dependent on rig availability.

SUPRON ENERGY CORPORATION
ZACHRY No. 23
SW $\frac{1}{4}$ Sec. 34, T-29N, R-10W, NMPM
San Juan County, New Mexico

The following attachments are included with this application:

1. Topographical map showing the proposed location and access road.
2. Planned access road is not required.
3. Map showing existing production facilities and access roads.
4. Location of surface equipment if required.
5. Drilling and completion water will be obtained from the San Juan River.
6. All pits will be fenced and constructed in such a manner as to prevent litter on the location.
7. We will dispose of all waste by placing it in the reserve pit and burying it when the well is completed.
8. There is no camp at or near the site.
9. There is no air strip.
10. A plat is attached showing the location of the rig, mud tanks, reserve pit, burn pit and etc.
11. A letter of certification is attached. The operators representative for compliance purposes is Rudy D. Mott, Area Superintendent, P.O. Box 808, Farmington, New Mexico 87401. Phone (505) 325-3587.
12. After the well is completed, the location will be cleaned up and bladed. The reserve pit will be allowed to dry, then be filled and restored to its natural state.
13. The soil is sandy clay loam with the principal vegetation being juniper, yucca, sagebrush, snakeweed and prickley pear.



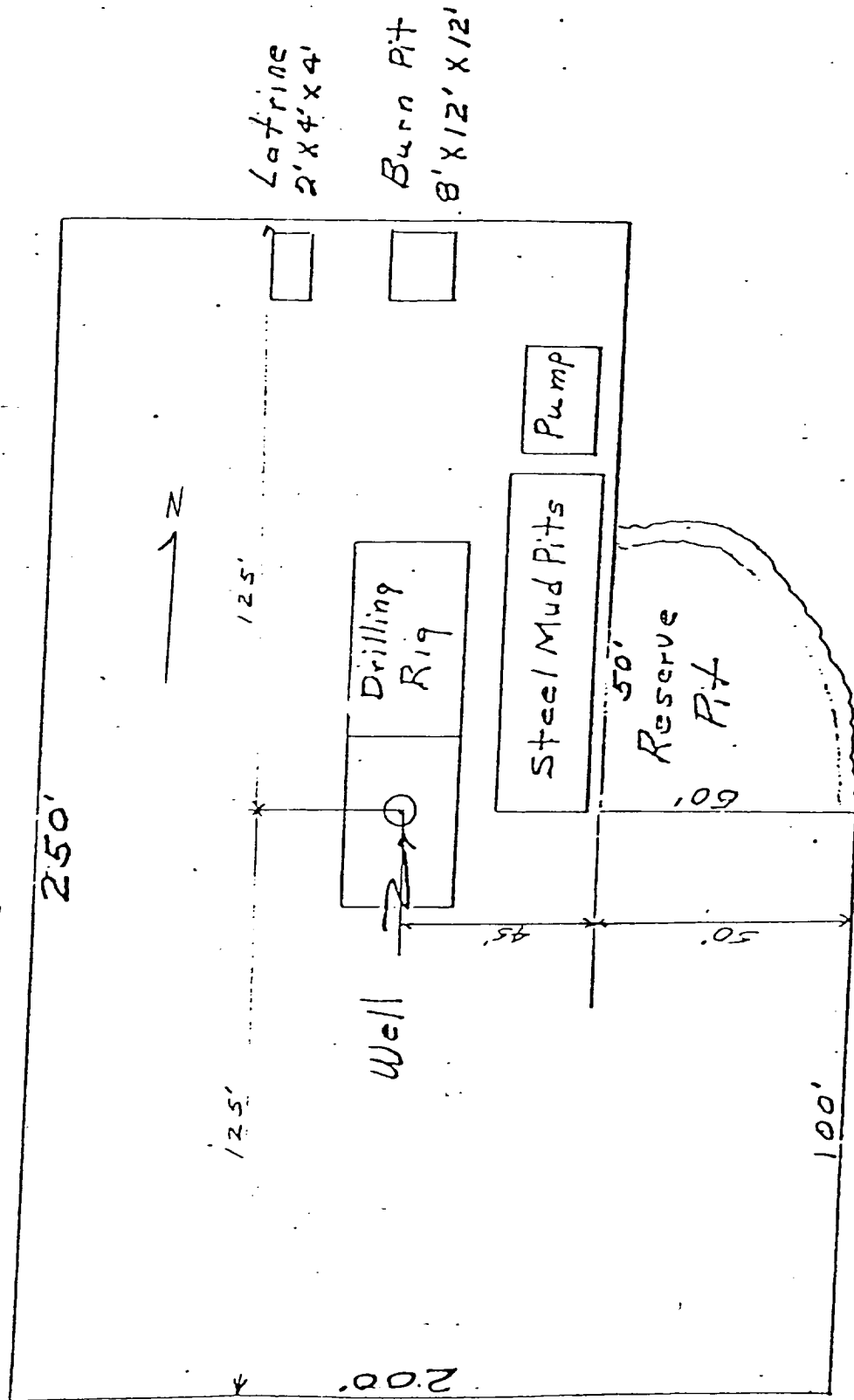
Supron Energy Corporation
Zachry #23
SW $\frac{1}{4}$ Sec. 34, T29N, R10W, N.M.P.M.
San Juan County, New Mexico

LOCATION AND EQUIPMENT LAYOUT

SUPRON ENERGY CORPORATION

ZACHRY NO. 23

1120 Ft./South; 1120 Ft./West line
Sec. 34, T-29N, R-10W, N.M.P.M.,
San Juan County, New Mexico



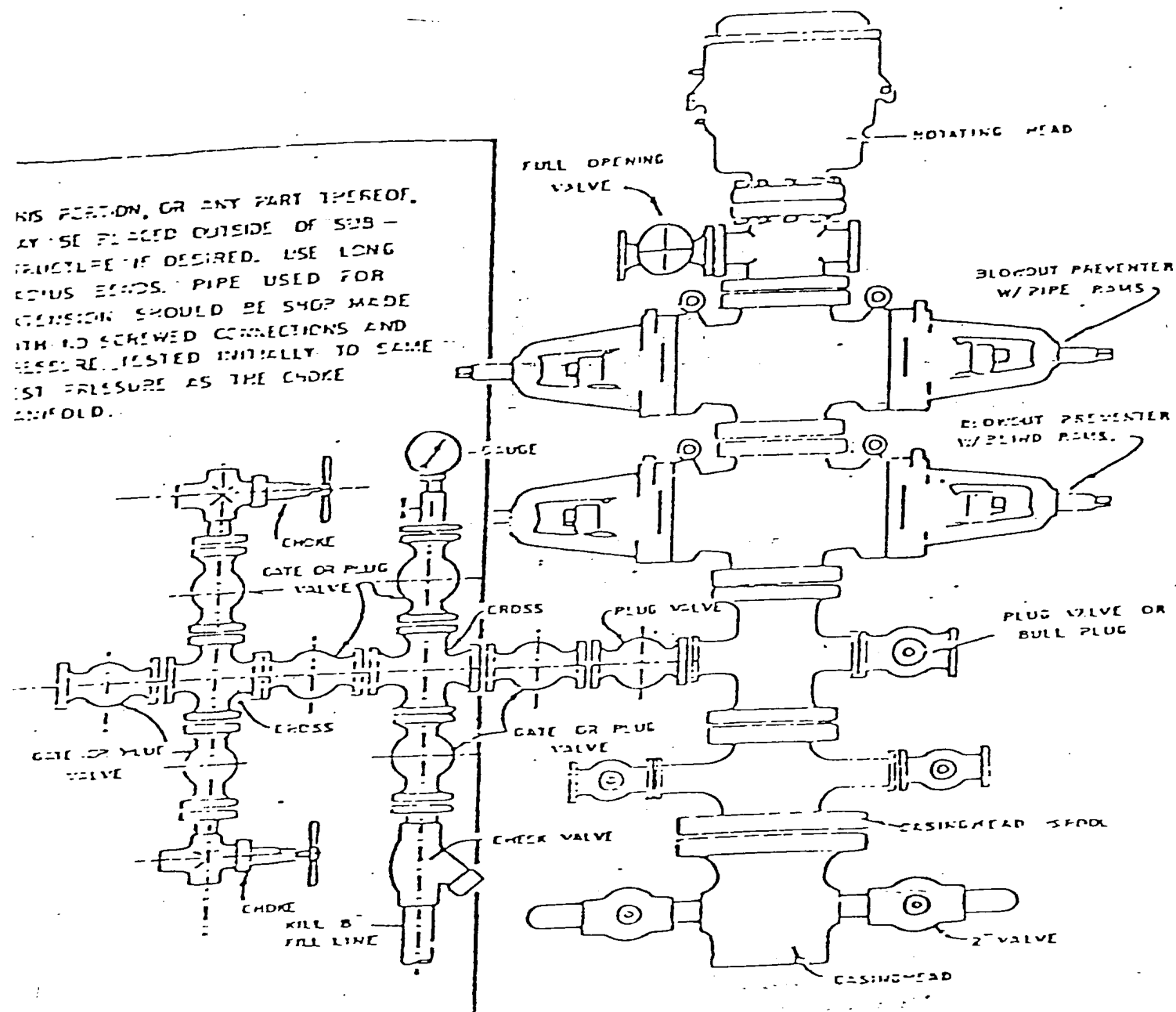


OL

~~773M Well Head~~

Blowout Preventer will be tested daily and prior to drilling out with the results to be logged on the drillers report.

The B.O.P. and all valve and fittings are rated at 3000 psi working pressure, and hydraulically operated



BLOWOUT PREVENTER HOCKUP

SUPRON ENERGY CORPORATION
Post Office Box 808
FARMINGTON, NEW MEXICO 87401

I hereby certify that I, or persons under my direct supervision, have inspected the proposed drillsite and access route; that I am familiar with the conditions which presently exist; that the statements made in this plan are, to the best of my knowledge, true and correct; and, that the work associated with the operations proposed herein will be performed by SUPRON ENERGY CORPORATION and its contractors subcontractors in conformity with this plan and the terms and conditions under which it is approved.

SUPRON ENERGY CORPORATION



Rudy D. Motto
Area Superintendent
Phone: 325-3587