

UNITED STATES
DEPARTMENT OF THE INTERIOR
GEOLOGICAL SURVEY

APPLICATION FOR PERMIT TO DRILL, DEEPEN, OR PLUG BACK

1a. TYPE OF WORK
DRILL ☒ DEEPEN ☐ PLUG BACK ☐b. TYPE OF WELL
OIL WELL ☐ GAS WELL ☒ OTHER ☐
SINGLE ZONE ☐ MULTIPLE ZONE ☐

2. NAME OF OPERATOR

Flag-Redfern Oil Co.

3. ADDRESS OF OPERATOR

P O Box 208, Farmington, NM 87401

4. LOCATION OF WELL (Report location clearly and in accordance with any State requirements.*)
At surface

500' FEL - 220' FNL (NE NE)

At proposed prod. zone

14. DISTANCE IN MILES AND DIRECTION FROM NEAREST TOWN OR POST OFFICE*

2.5 miles east of Farmington, NM

15. DISTANCE FROM PROPOSED*
LOCATION TO NEAREST
PROPERTY OR LEASE LINE, FT.
(Also to nearest drlg. unit line, if any)

500

16. NO. OF ACRES IN LEASE

160

17. NO. OF ACRES ASSIGNED
TO THIS WELL

160

18. DISTANCE FROM PROPOSED LOCATION*
TO NEAREST WELL, DRILLING, COMPLETED,
OR APPLIED FOR, ON THIS LEASE, FT.

19. PROPOSED DEPTH

1931'

20. ROTARY OR CABLE TOOLS

Cable tool to 90', Rotary to TD

21. ELEVATIONS (Show whether DF, RT, GR, etc.)

5720'

22. APPROX. DATE WORK WILL START*

June 1981**

23.

PROPOSED CASING AND CEMENTING PROGRAM

SIZE OF HOLE	SIZE OF CASING	WEIGHT PER FOOT	SETTING DEPTH	QUANTITY OF CEMENT
10"	7"	20#	116'	35 sx
5-1/8"	2-7/8"	6.4#	1931'	170 sx

Plan to use cable tool rig to drill 10" surface hole to 116' and set 7" surface pipe.

Plan to use rotary rig to drill 5-1/8" hole to 2000'. If productive, plan to run 2-7/8" casing to TD, selectively perforate, frac, clean out after frac, run 1 1/4" tubing and put well on production.

Plan to use 3000# psi hydrolic blowcut preventer - bag type.

Well head equipment, 1000# working pressure, non-flanged.

GAS NOT DEDICATED.



IN ABOVE SPACE DESCRIBE PROPOSED PROGRAM: If proposal is to deepen or plug back, give data on present productive zone and proposed new productive zone. If proposal is to drill or deepen directionally, give pertinent data on subsurface locations and measured and true vertical depths. Give blowout preventer program, if any.

24.

SIGNED

Thomas A. Dugan

TITLE

Petroleum Engineer

DATE

8-25-81

(This space for Federal or State office use)

PERMIT NO.

APPROVAL DATE

APPROVED BY

TITLE

DATE

CONDITIONS OF APPROVAL, IF ANY:

NEW MEXICO OIL CONSERVATION COMMISSION
WELL LOCATION AND ACREAGE DEDICATION PLAT

Form C-102
Supersedes C-128
Effective 1-1-65

All distances must be from the outer boundaries of the Section.

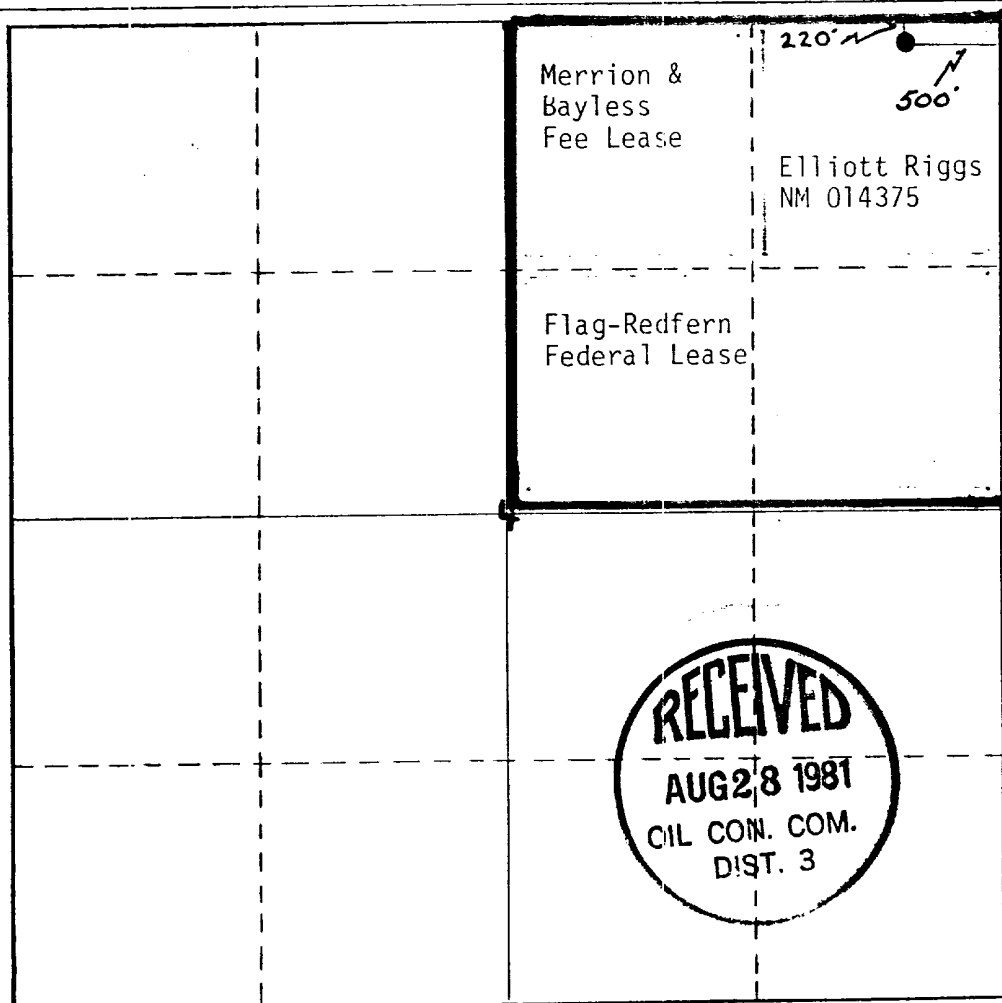
Operator Flag-Redfern Oil Co.			Lease Crouch Mesa		Well No. #1
Unit Letter A	Section 4	Township 29N	Range 12W	County San Juan	
Actual Footage Location of Well: 220' feet from the North line and 500' feet from the East line					
Ground Level Elev. 5720'	Producing Formation Pictured Cliffs	Pool Fulcher-Kutz P.C.		Dedicated Acreage: 160 Acres	

1. Outline the acreage dedicated to the subject well by colored pencil or hachure marks on the plat below.
2. If more than one lease is dedicated to the well, outline each and identify the ownership thereof (both as to working interest and royalty).
3. If more than one lease of different ownership is dedicated to the well, have the interests of all owners been consolidated by communitization, unitization, force-pooling, etc?

☒ Yes ☐ No If answer is "yes," type of consolidation communitization

If answer is "no," list the owners and tract descriptions which have actually been consolidated. (Use reverse side of this form if necessary.)

No allowable will be assigned to the well until all interests have been consolidated (by communitization, unitization, forced-pooling, or otherwise) or until a non-standard unit, eliminating such interests, has been approved by the Commission.



CERTIFICATION

I hereby certify that the information contained herein is true and complete to the best of my knowledge and belief.

Sherman E. Dugan
Name Sherman E. Dugan

Agent
Position

Dugan Production
Company

9-10-80
Date

Date

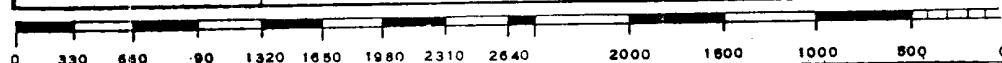
I hereby certify that the well location shown on this plat was plotted from field notes of actual surveys made by me or under my supervision, and that the same is true and correct to the best of my knowledge and belief.

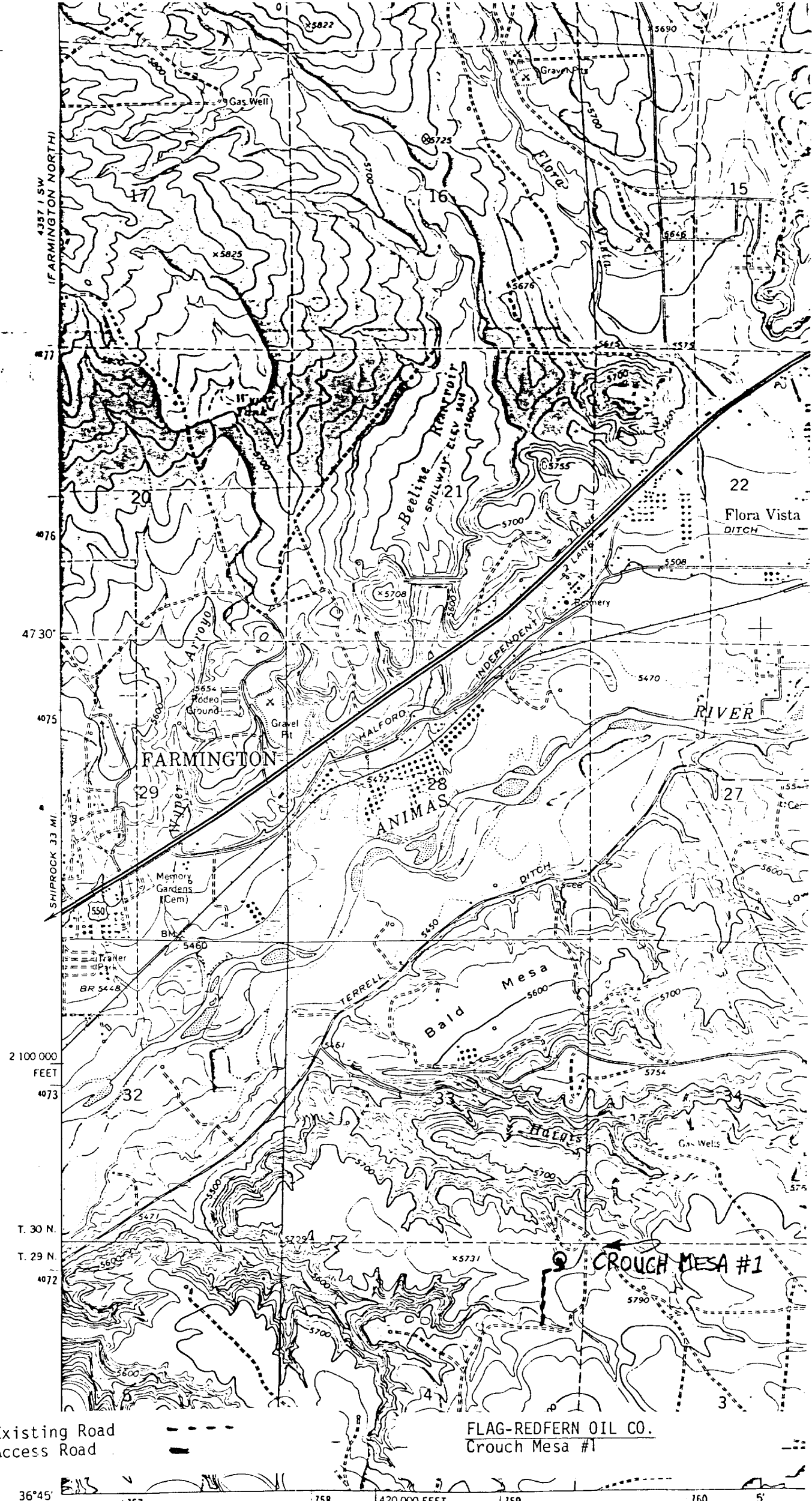
Date Surveyed

Registered Professional Engineer
and/or Land Surveyor

Certificate No.

N 11 2312





Existing Road
Access Road

FLAG-REDFERN OIL CO.
Crouch Mesa #1

36°45' 108°07'30" 1757 1758 1420 000 FEET 1759 1760 5'

Mapped, edited, and published by the Geological Survey