

UNITED STATES  
DEPARTMENT OF THE INTERIOR  
GEOLOGICAL SURVEY

## APPLICATION FOR PERMIT TO DRILL, DEEPEN, OR PLUG BACK

## 1a. TYPE OF WORK

DRILL ☒DEEPEN ☐PLUG BACK ☐

## b. TYPE OF WELL

OIL  
WELL ☐GAS  
WELL ☒

OTHER

SINGLE  
ZONE ☒MULTIPLE  
ZONE ☐

## 2. NAME OF OPERATOR

Supron Energy Corporation

## 3. ADDRESS OF OPERATOR

P.O. Box 808, Farmington, New Mexico 87401

## 4. LOCATION OF WELL (Report location clearly and in accordance with any State requirements.\*)

At surface 800 Ft./South; 1725 ft./West line

At proposed prod. zone Same as above

## 14. DISTANCE IN MILES AND DIRECTION FROM NEAREST TOWN OR POST OFFICE\*

2 Miles South East of Bloomfield, New Mexico

## 15. DISTANCE FROM PROPOSED\* 800 Ft.

LOCATION TO NEAREST  
PROPERTY OR LEASE LINE, FT. 800 Ft.  
(Also to nearest drlg. unit line, if any)

## 18. DISTANCE FROM PROPOSED LOCATION\*

TO NEAREST WELL, DRILLING, COMPLETED,  
OR APPLIED FOR, ON THIS LEASE, FT. 432 Ft.

## 16. NO. OF ACRES IN LEASE

1183.91

## 19. PROPOSED DEPTH

2930 Ft.

17. NO. OF ACRES ASSIGNED  
TO THIS WELL

SW/4 160.00

## 20. ROTARY OR CABLE TOOLS

Rotary

## 21. ELEVATIONS (Show whether DF, RT, GR, etc.)

5595 GR

## 22. APPROX. DATE WORK WILL START\*

August 15, 1980

## 23.

## PROPOSED CASING AND CEMENTING PROGRAM

SIZE OF HOLE	SIZE OF CASING	WEIGHT PER FOOT	SETTING DEPTH	QUANTITY OF CEMENT
9-7/8"	7-5/8"	26.40#	200 Ft.	100 Sx. circulated
6-3/4"	2-7/8"	6.50#	2930 Ft.	375 Sx. - Cover Ojo Alamo
This action is subject to administrative appeal pursuant to 30 CFR 290.				

We plan to drill 9-7/8" surface hole to approx. 200 ft. and run 7-5/8" surface casing. Cement casing and circulate cement. Pressure test casing. Drill 6-3/4" hole to T.D. of approx. 2930 ft. and run 2-7/8" casing. Cement pipe and cover the Ojo Alamo zone. Pressure test casing. Perforate and fracture the Chacra zone. Clean the well up and nipple down the well head. Test well and connect the well to a gathering system.

This well to be drilled in acreage dedicated to a transporter.

RECEIVED

JUL 26 1980

RECEIVED

JUL 26 1980

U. S. GEOLOGICAL SURVEY  
FARMINGTON, N. M.

U. S. GEOLOGICAL SURVEY

IN ABOVE SPACE DESCRIBE PROPOSED PROGRAM: If proposal is to deepen or plug back, give data on present productive zone and proposed new productive zone. If proposal is to drill or deepen directionally, give pertinent data on subsurface locations and measured and true vertical depths. Give blowout prevention program, if any.

## 24.

SIGNED

*Rudy D. Mott*  
Rudy D. Mott

TITLE

Area Superintendent

DATE

7/28/80

(This space for Federal or State office use)

PERMIT NO.

APPROVAL DATE

APPROVED BY

*Bruce Wamsley*  
Bruce Wamsley

TITLE

DATE

CONDITIONS OF APPROVAL, IF ANY

*ch 3me*

115000

**NEW MEXICO OIL CONSERVATION COMMISSION  
WELL LOCATION AND ACREAGE DEDICATION PLAT**

Form C-102  
Supersedes C-128  
Effective 1-1-65

All distances must be from the outer boundaries of the Section.

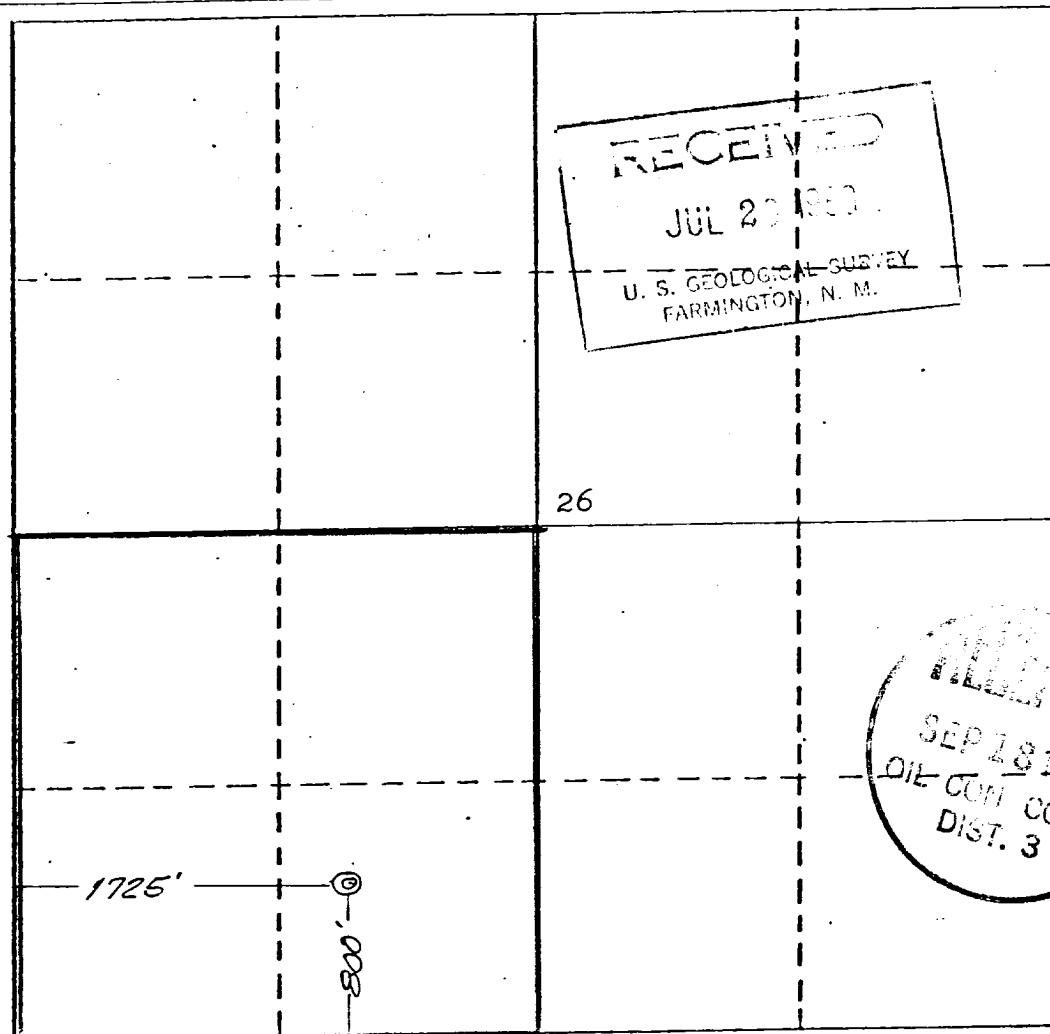
Operator <b>SUPRON ENERGY CORPORATION</b>			Lease <b>CONGRESS</b>		Well No. <b>9</b>
Unit Letter <b>N</b>	Section <b>26</b>	Township <b>29 NORTH</b>	Range <b>11 WEST</b>	County <b>SAN JUAN</b>	
Actual Footage Location of Well: <div style="display: flex; justify-content: space-between;"> <span>800 feet from the</span> <span><b>SOUTH</b> line and</span> <span>1725 feet from the</span> <span><b>WEST</b> line</span> </div>					
Ground Level Elev. <b>5595</b>	Producing Formation <b>Chacra</b>	Pool <b>Bloomfield Extension</b>		Dedicated Acreage: <b>SW 1/4 160.00</b> Acres	

1. Outline the acreage dedicated to the subject well by colored pencil or hatchure marks on the plat below.
2. If more than one lease is dedicated to the well, outline each and identify the ownership thereof (both as to working interest and royalty).
3. If more than one lease of different ownership is dedicated to the well, have the interests of all owners been consolidated by communitization, unitization, force-pooling, etc?

☐ Yes   ☐ No   If answer is "yes," type of consolidation \_\_\_\_\_

If answer is "no," list the owners and tract descriptions which have actually been consolidated. (Use reverse side of this form if necessary.) \_\_\_\_\_

No allowable will be assigned to the well until all interests have been consolidated (by communitization, unitization, forced-pooling, or otherwise) or until a non-standard unit, eliminating such interests, has been approved by the Commission.



**CERTIFICATION**

I hereby certify that the information contained herein is true and complete to the best of my knowledge and belief.

*Rudy D. Motto*  
Name

**Rudy D. Motto**  
Position

**Area Superintendent**

Company  
**SUPRON ENERGY CORPORATION**

Date  
**July 28, 1980**

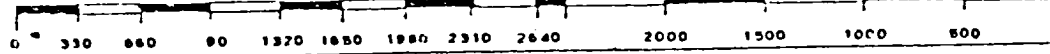
I hereby certify that the well location shown on this plat was plotted from field notes of actual surveys made by me or under my supervision and that the same is true and correct to the best of my knowledge and belief.

Date Surveyed  
**June 19, 1980**

Registered Professional Engineer and/or Land Surveyor

*James P. Leese*  
**James P. Leese**

Certificate No.  
**1463**



SUPRON ENERGY CORPORATION

CONGRESS NO. 9

800'/South; 1725'/West Line

Sec. 26, T-29N, R-11W, N.M.P.M.

San Juan County, New Mexico

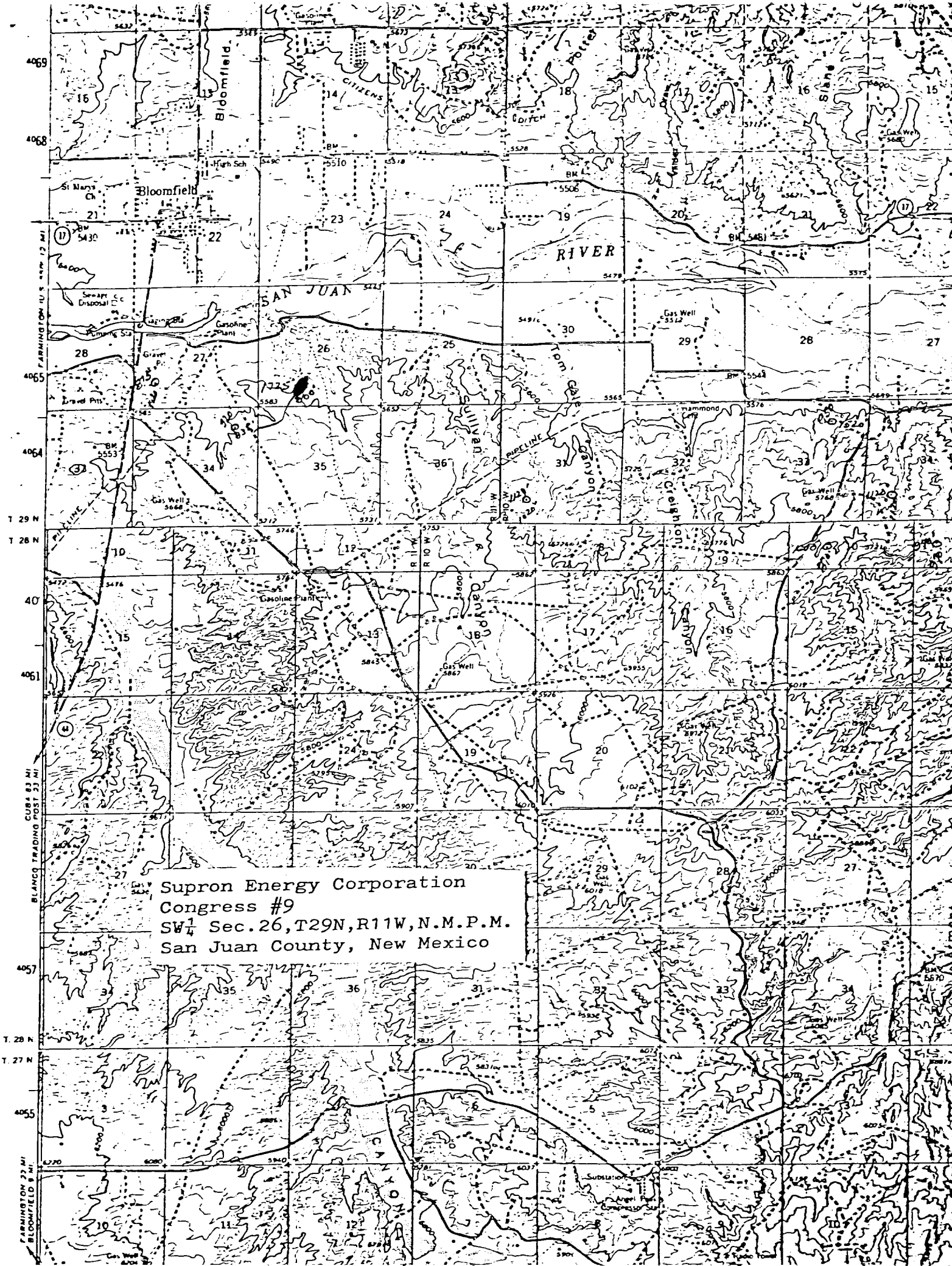
1. The Geologic name of the surface formation is "Wasatch".
2. The estimated tops of important Geologic markers are:
  - A. Top of the Ojo Alamo 600 Ft.
  - B. Top of the Fruitland 1450 Ft.
  - C. Top of the Pictured Cliffs 1725 Ft.
  - D. Top of the Chacra 2730 Ft.
3. The estimated depth at which anticipated water, oil or other mineral bearing formations are expected to be encountered are:
  - A. Top of the Ojo Alamo 600 Ft. - - - Water
  - B. Top of the Fruitland 1450 Ft. - - - Water
  - C. Top of the Pictured Cliffs 1725 Ft. - - - Gas
  - D. Top of the Chacra 2730 Ft. - - - Gas
4. The casing program is shown on 9-331C and all casing is new.
5. The lessee's pressure control equipment schematics are attached along with minimum specifications, testing procedures and frequencies.
6. The type, estimated volumes and characteristics of the circulating medium are as follows:
  - A. 0 to 200 Feet Natural mud
  - B. 200 to 2930 Feet Permaloid non dispersed mud containing approximately 67 sx of Permaloid and 10 sx. of C.M.C.
7. The auxiliary equipment will be floats at the bit and a sub on the floor with a full opening valve to be stabbed into the drill pipe when the kelly is not in the string.
8. This well is in an area which is heavily developed; therefore we will not have a testing or coring program. The logging program is as follows:
  - A. E.S. Induction
  - B. Gamma Ray Density
  - C. Gamma Ray Correlation
  - D. Cement Bond or Temperature
9. We do not expect to find any abnormal pressures, temperatures or hydrogen sulfide problems in this heavily developed area.
10. The anticipated starting date for this well is August 15, 1980.

SUPRON ENERGY CORPORATION

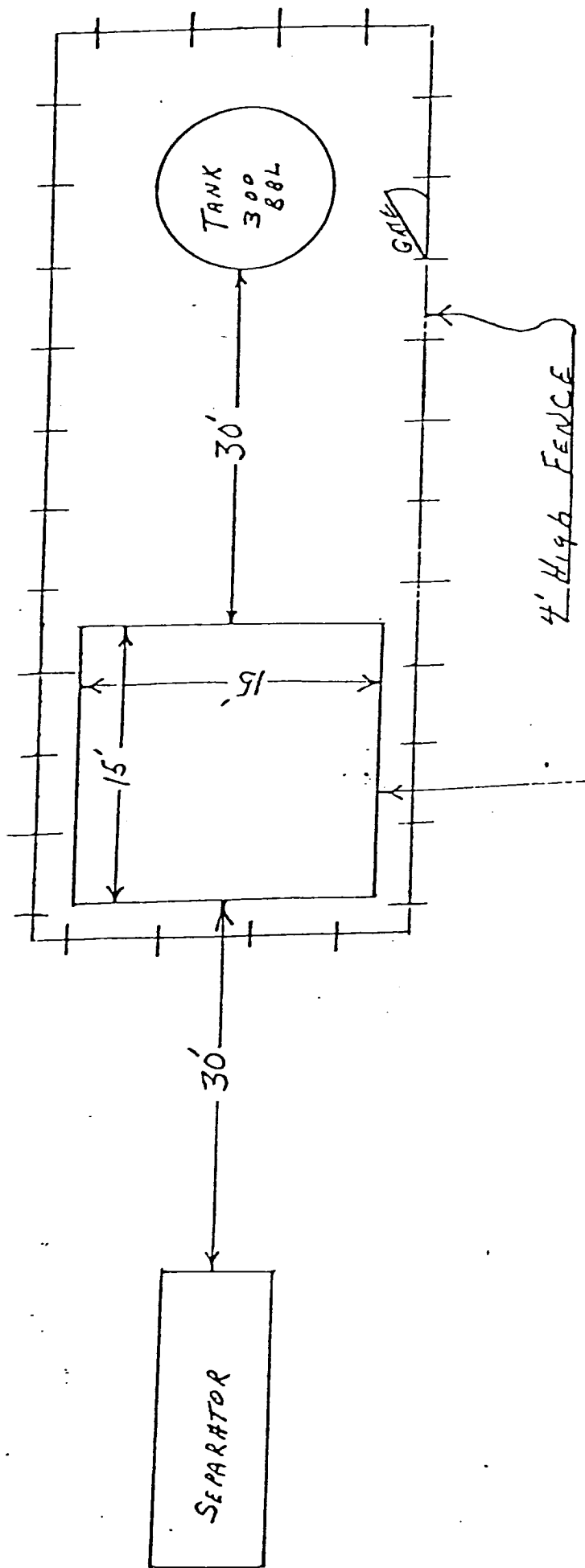
CONGRESS NO. 9  
800'/South; 1725'/West Line  
Sec. 26, T-29N, R-11W, N.M.P.M.  
San Juan County, New Mexico

The following attachments are included with this application:

1. Topographical map showing the proposed location and access road.
2. Planned access road is 1300 feet long and 20 feet wide approaching the location from the Southwest. The road will follow the natural contours of the land and will have drainage facilities installed to meet the requirements of NTL-6. No extra surfacing materials will be used.
3. Map showing existing production facilities and access roads.
4. Location of surface equipment if required.
5. Drilling and completion water will be obtained from the San Juan River.
6. All pits will be fenced and constructed in such a manner as to prevent litter on the location.
7. We will dispose of all waste by placing it in the reserve pit and burying it when the well is completed.
8. There is no camp at or near the site.
9. There is no air strip.
10. A plat is attached showing the location of the rig, mud tanks, reserve pit, burn pit and etc.
11. A letter of certification is attached. The operators representative for compliance purposes is Rudy D. Motto, Area Superintendent, P.O. Box 808, Farmington, New Mexico 87401. Phone (505) 325-3587.
12. After the well is completed, the location will be cleaned up and bladed. The reserve pit will be allowed to dry, then be filled and restored to its natural state.
13. The soil is sandy clay loam and the principal vegetation is snakeweed, juniper, ricegrass, brome and mormon tea.



Supron Energy Corporation  
Congress #9  
SW $\frac{1}{4}$  Sec. 26, T29N, R11W, N.M.P.M.  
San Juan County, New Mexico

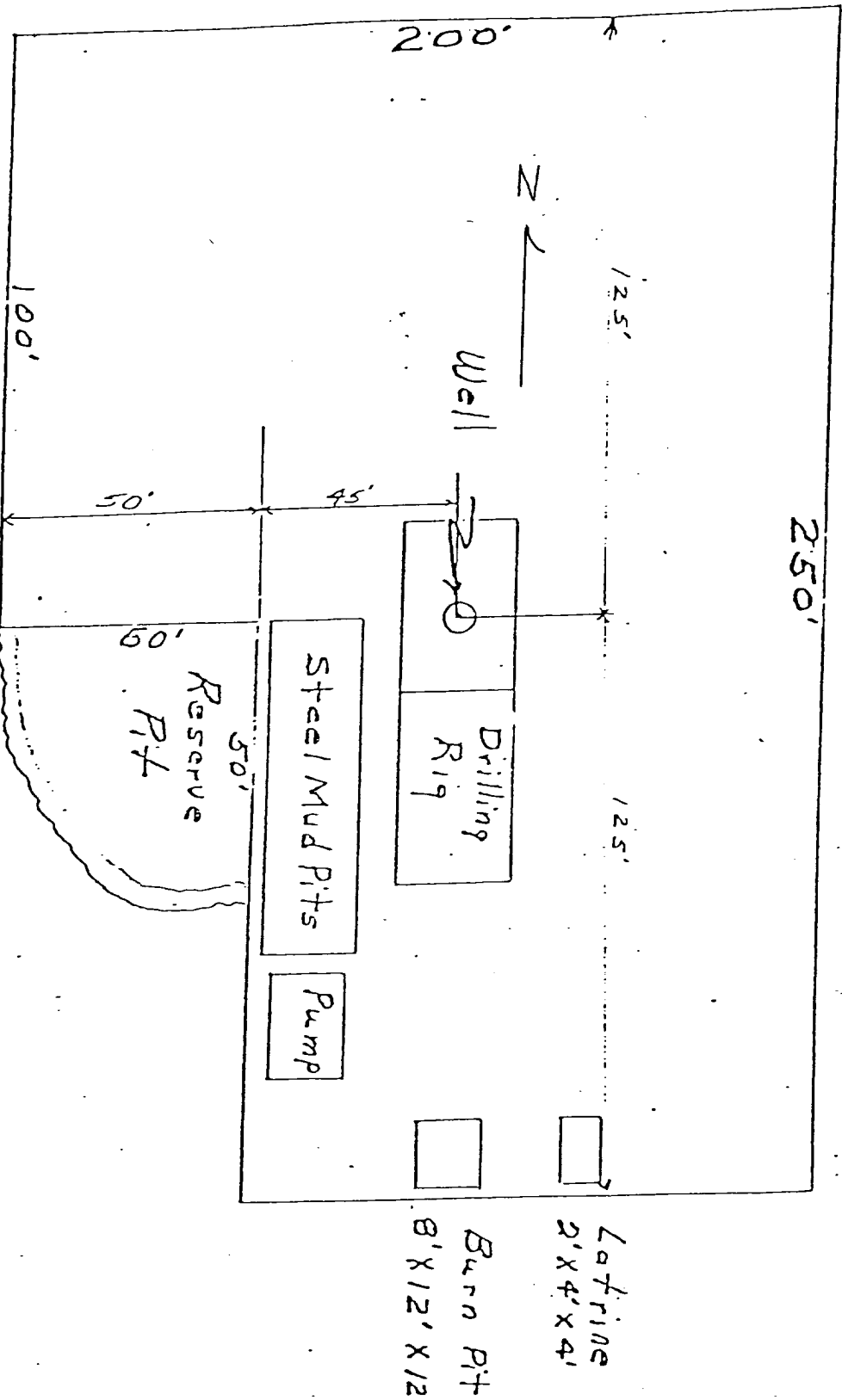


# LOCATION AND EQUIPMENT LAYOUT

SUPRON ENERGY CORPORATION

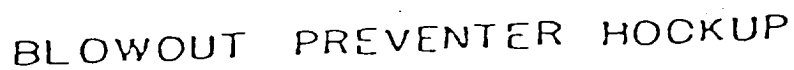
CONGRESS NO. 9

800 Ft./South; 1725 Ft./West line  
Sec. 26, T-29N, R-11W, N.M.P.M.,  
San Juan County, New Mexico



The B.O.P. and all valve and fittings are rated at 3000 psi working pressure, and hydraulically operated

The B.O.P. and all valve and fittings are rated at 3000 psi working pressure, and hydraulically operated





SUPRON ENERGY CORPORATION  
Post Office Box 808  
FARMINGTON, NEW MEXICO 87401

I hereby certify that I, or persons under my direct supervision, have inspected the proposed drillsite and access route; that I am familiar with the conditions which presently exist; that the statements made in this plan are, to the best of my knowledge, true and correct; and, that the work associated with the operations proposed herein will be performed by SUPRON ENERGY CORPORATION and its contractors subcontractors in conformity with this plan and the terms and conditions under which it is approved.

SUPRON ENERGY CORPORATION



Rudy D. Motto  
Area Superintendent  
Phone: 325-3587