

30-045-24633

NEW MEXICO OIL CONSERVATION COMMISSION

Form 1-7-81  
Revised 11-85

NO. OF COPIES RECEIVED	
DISTRIBUTION	
SANTA FE	
FILE	
U.S.G.S.	
LAND OFFICE	
OPERATOR	

5A. Indicate Type of Lease  
STATE  FEE

5. State Oil & Gas Lease No.

APPLICATION FOR PERMIT TO DRILL, DEEPEN, OR PLUG BACK

1a. Type of Work

b. Type of Well DRILL  DEEPEN  PLUG BACK

OIL WELL  GAS WELL  OTHER  SINGLE ZONE  MULTIPLE ZONE

7. Unit Agreement Name

8. Farm or Lease Name  
TRS-EVI

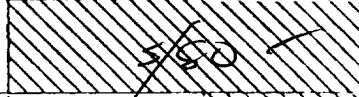
2. Name of Operator  
S & I Oil Company

9. Well No.  
1

3. Address of Operator  
413 W. Main Street, Farmington, N.M. 87401

10. Field and Pool, or Wildcat  
Cha Cha Gallup Ext.

4. Location of Well UNIT LETTER H LOCATED 2130 FEET FROM THE North LINE  
AND 810 FEET FROM THE East LINE OF SEC. 11 TWP. 29N RGE. 15W NMPM



12. County  
San Juan



21. Elevations (Show whether DF, KT, etc.) 5170'	21A. Kind & Status Plug. Bond Individual Well	19. Proposed Depth 4700'	19A. Formation Gallup	20. Rotary or C.T. Rotary
	21B. Drilling Contractor To be determined	22. Approx. Date Work will start October 15, 1980		

PROPOSED CASING AND CEMENT PROGRAM

SIZE OF HOLE	SIZE OF CASING	WEIGHT PER FOOT	SETTING DEPTH	SACKS OF CEMENT	EST. TOP
12-1/4"	8-5/8"	24.0	350'	350	Surface
7-7/8"	4-1/2"	10.50	4700'	300 & 350	1400'

above Cliff House

It is proposed to drill this well with rotary tools, using water base mud as circulation medium through the Gallup formation. Possible productive intervals in the Gallup will be completed. Production casing will be cemented in such a manner to protect the Gallup and Mesa Verde formations.

APPROVAL VALID FOR 90 DAYS UNLESS DRILLING COMMENCED,

ESTIMATED FORMATION TOPS

Pictured Cliffs	300'	Point Lookout	2900'
Cliff House	1350'	Gallup	1100'
Menefee	2000'		



This S/2, NE/4, Sec. 11 is dedicated to this well.

The natural gas produced from this well is not committed.

4 ABOVE SPACE DESCRIBE PROPOSED PROGRAM; IF PROPOSAL IS TO DEEPEN OR PLUG BACK, GIVE DATA ON PRESENT PRODUCTIVE ZONE AND PROPOSED NEW PRODUCTIVE ZONE. GIVE BLOWOUT PREVENTER PROGRAM, IF ANY.

I hereby certify that the information above is true and complete to the best of my knowledge and belief.

SIGNED BY EWELL N. WALSH ORIGINAL SIGNED BY EWELL N. WALSH FOR S & I OIL COMPANY  
EWELL N. WALSH, P. E. Title & Production Corp. Date 9/23/80

APPROVED BY Frank S. Dancy TITLE SUPERVISOR DISTRICT #3 DATE OCT 16 1980

CONDITIONS OF APPROVAL, IF ANY:

All distances must be from the outer boundaries of the Section.

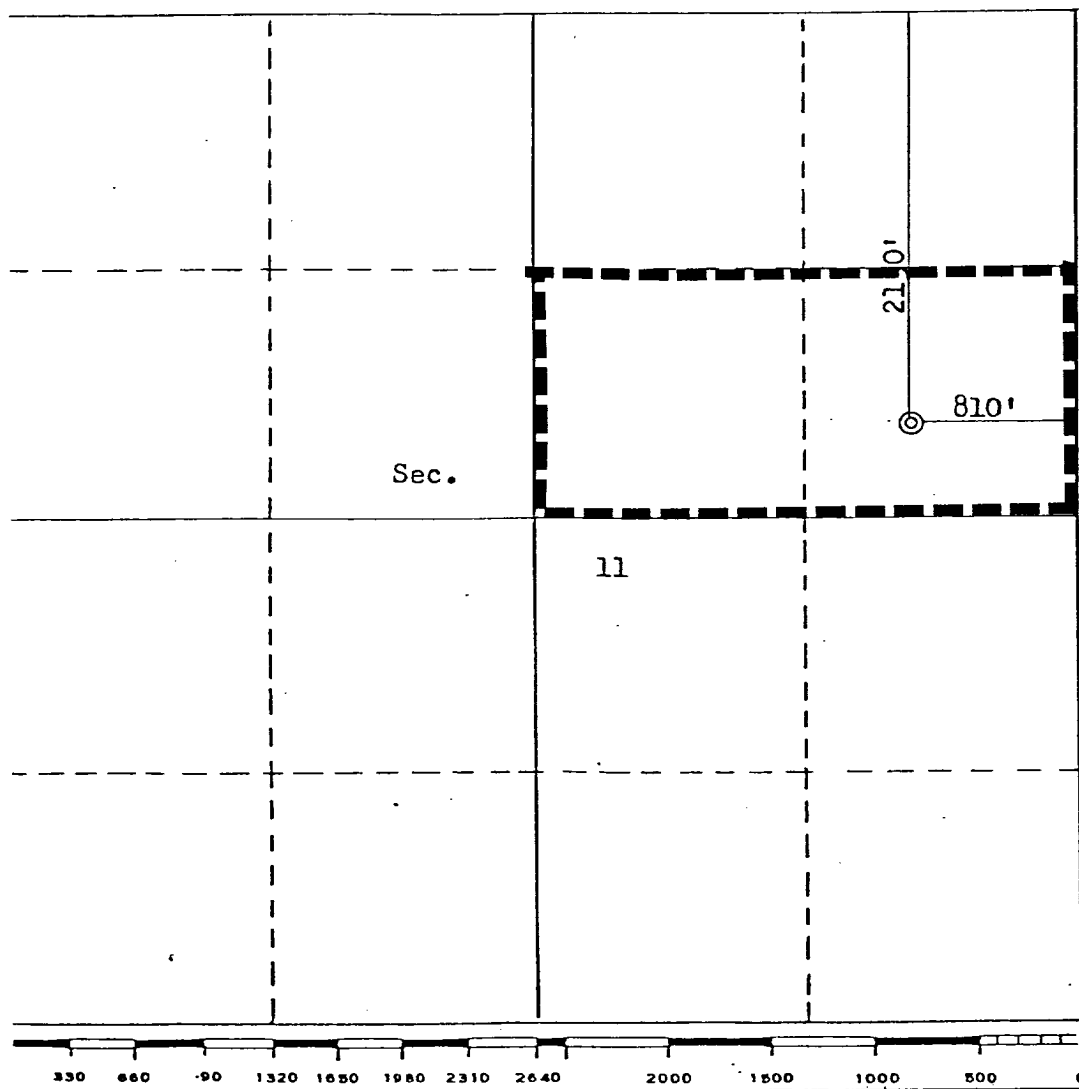
Operator <b>S &amp; I Oil Company</b>		Lease <b>TRS-EVI</b>			Well No. <b>1</b>		
Init Letter <b>H</b>	Section <b>11</b>	Township <b>29N</b>	Range <b>15W</b>	County <b>San Juan</b>			
Actual Footage Location of Well:							
<b>2130</b>	feet from the	<b>North</b>	line and	<b>810</b>	feet from the	<b>East</b>	line
Ground Level Elev. <b>5174</b>	Producing Formation <b>Gallup</b>		Pool <b>Cha Cha Gallup Ext.</b>		Dedicated Acreage: <b>80</b> Acres		

1. Outline the acreage dedicated to the subject well by colored pencil or hachure marks on the plat below.
2. If more than one lease is dedicated to the well, outline each and identify the ownership thereof (both as to working interest and royalty).
3. If more than one lease of different ownership is dedicated to the well, have the interests of all owners been consolidated by communitization, unitization, force-pooling, etc?

Yes  No If answer is "yes," type of consolidation \_\_\_\_\_

If answer is "no," list the owners and tract descriptions which have actually been consolidated. (Use reverse side of this form if necessary.) \_\_\_\_\_

No allowable will be assigned to the well until all interests have been consolidated (by communitization, unitization, forced-pooling, or otherwise) or until a non-standard unit, eliminating such interests, has been approved by the Commission.



<b>CERTIFICATION</b>	
I hereby certify that the information contained herein is true and complete to the best of my knowledge and belief.	
FOR: <b>S &amp; I OIL COMPANY</b>	
ORIGINAL SIGNED BY <b>EWELL N. WALSH</b>	
Name	<b>Ewell N. Walsh, P.E.</b>
Position	<b>President</b>
Company	<b>Walsh Engineering &amp; Prod. Corp.</b>
Date	<b>September 23, 1980</b>
I hereby certify that the well location shown on this plat was plotted from field notes of actual measurements made by me or under my supervision, and that the same is true and correct to the best of my knowledge and belief.	
Date Surveyed	<b>May 6, 1980</b>
Registered Professional Engineer and/or Land Surveyor	<b>Fred B. Kerr Jr.</b>
Certificate No.	<b>3950</b>

S & I OIL COMPANY  
TRS-EVI  
2130'FNL, 810'FEL, SEC. 11-T29N-R15W  
San Juan County, New Mexico

1. Surface Casing.  
See Application for Permit to Drill.
2. Spools and Flanges
  - A. Surface Casing - 8", Series 600, 2000 psig W.P.
  - B. Production - 8", Series 900, 3000 psig W.P.
  - C. Tubing Head - Series 900, 3000 psig W.P.
3. Intermediate Casing  
None
4. Blowout Preventers  
Production Hole - 10", 3000 psig  
Fill, Kill and choke manifold - 5000 psig W.P.
5. Additional Equipment (If necessary)
  - A. Kelly Cock
  - B. Bit Float
  - C. Degasser
  - D. Pit Level Indicator
  - E. Sub with valve for drill pipe
6. Anticipated Bottom Hole Pressure  
1200 psig. Current mud program is for 9.2 lb./ gal. mud with hydrostatic head of 2230 psig at 4700'. Mud weight will be increased if necessary for higher pressures.
7. Drilling Fluid  
Gel-Water

Blowout Preventer  
Diagram

S & I OIL COMPANY  
TRS-EVI  
2130' FNL, 810' FEL  
Section 11-T29N-R15W  
San Juan County, New Mexico

PLAN VIEW - CHOKE MANIFOLD

