

DISTRICT I
P.O. Box 1980, Hobbs, NM 88240

DISTRICT II
P.O. Drawer DD, Artesia, NM 88210

DISTRICT III
1000 Rio Brazos Rd., Aztec, NM 87410

OIL CONSERVATION DIVISION
P.O. Box 2088
Santa Fe, New Mexico 87504-2088

WELL API NO.

5. Indicate Type of Lease

STATE ☐

FEE ☒

6. State Oil & Gas Lease No.

SUNDRY NOTICES AND REPORTS ON WELLS

(DO NOT USE THIS FORM FOR PROPOSALS TO DRILL OR TO DEEPEN OR PLUG BACK TO A
DIFFERENT RESERVOIR. USE "APPLICATION FOR PERMIT"
(FORM C-101) FOR SUCH PROPOSALS.)

1. Type of Well:

OIL

WELL ☒

GAS

WELL ☐

OTHER ☐

2. Name of Operator

S&I Oil Company

3. Address of Operator

5422 U.S. Hwy. 64 Farmington, NM

7. Lease Name or Unit Agreement Name

TRS-EVI

8. Well No.

#1

9. Pool name or Wildcat

Cha Cha Gallup

4. Well Location

Unit Letter H : 2130 Feet From The North Line and 810 Feet From The East Line

Section 11 Township 29N Range 15W NMPM San Juan County

10. Elevation (Show whether DF, RKB, RT, GR, etc.)

11. Check Appropriate Box to Indicate Nature of Notice, Report, or Other Data
NOTICE OF INTENTION TO:

PERFORM REMEDIAL WORK ☐

PLUG AND ABANDON ☒

TEMPORARILY ABANDON ☐

CHANGE PLANS ☐

PULL OR ALTER CASING ☐

OTHER: ☐

SUBSEQUENT REPORT OF:

REMEDIAL WORK ☐ ALTERING CASING ☐

COMMENCE DRILLING OPNS. ☐ PLUG AND ABANDONMENT ☐

CASING TEST AND CEMENT JOB ☐

OTHER: ☐

12. Describe Proposed or Completed Operations (Clearly state all pertinent details, and give pertinent dates, including estimated date of starting any proposed work) SEE RULE 1103.

1. Check anchors & prepare location.
2. R.U. Service unit. Kill well if necessary. Nipple down well head. Nipple up BOP & stripper head.
3. Pull & lay down production equipment
4. Go in hole with work string to 4527' & spot cement plug up to 4290' to cover perfs & top of Gallup. WOC 4 Hrs. & tag cement. If plug is in place go to step 5, if not fill to 4290'.
5. Roll hole with 8.4 lb. 40 visc. mud. 6. Test casing.
7. Set a cement plug from 1250' to 1350' to cover top of Cliffhouse at 1300'.
8. Perforate at 348' & establish circulation up the B.H.
9. Pump cement down 4 1/2 csg. & circulate to surface.
10. Set dryhole marker, level & restore location to OCD requirements.

I hereby certify that the information above is true and complete to the best of my knowledge and belief.

SIGNATURE

Troy R. Strickland

TITLE

Managing Director

DATE

1-11-95

TYPE OR PRINT NAME

Troy R. Strickland

TELEPHONE NO. 325-1704

(This space for State Use)

APPROVED BY

Johnny Robinson

TITLE

DEPUTY OIL & GAS INSPECTOR, DIST. #3

DATE

JAN 12 1995

CONDITIONS OF APPROVAL, IF ANY:

Notify in time to witness



BRUCE KING
GOVERNOR

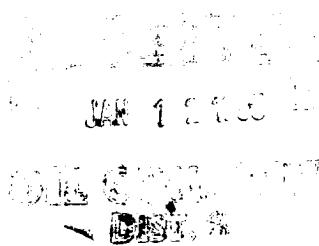
STATE OF NEW MEXICO
ENERGY, MINERALS AND NATURAL RESOURCES DEPARTMENT
OIL CONSERVATION DIVISION
AZTEC DISTRICT OFFICE

ANITA LOCKWOOD
CABINET SECRETARY

1000 RIO BRAZOS ROAD
AZTEC, NEW MEXICO 87410
(505) 334-6178



S&I Oil Co.
TRS-EVI #1
2130' FNL, 810' FEL
H-11-29N-15W, San Juan County, N.M.



Downhole Equipment
Unknown
T.D. 4690

1. Check anchors & prepare location.
2. R.U. Service unit. Kill well if necessary. Nipple down well head. Nipple up BOP & stripper head.
3. Pull & lay down production equipment.
4. Go in hole with work string to 4527' & spot cement plug up to 4290' to cover perfs & top of Gallup. WOC 4 Hrs. & tag cement. If plug is in place go to step 5, if not fill to 4290'.
5. Roll hole with 8.4 lb. 40 visc. mud.
6. Test casing.
7. Set a cement plug from 1250' to 1350' to cover top of Cliffhouse at 1300'.
8. Perforate at 348' & establish circulation up the B.H.
9. Pump cement down 4&1/2 csg. & circulate to surface.
10. Set dryhole marker, level & restore location to OCD requirements.

RECEIVED
DEC - 2 1994
OIL CON. DIV.
BML 3