

NAME OF OPERATOR	
DISTRIBUTION	
SANTA FE	
FILE	
U.S.G.S.	
LAND OFFICE	
OPERATION	

5A. Estimate Type of Lease
STATE ☐ REC ☒

5. State Oil & Gas Lease No.

APPLICATION FOR PERMIT TO DRILL, DEEPEN, OR PLUG BACK

1. Type of Work
2. Type of Well
OIL WELL ☐ GAS WELL ☒ OTHER ☐ Infill
3. Name of Operator
AMOCO PRODUCTION COMPANY
4. Address of Operator
501 Airport Drive, Farmington, NM 87401
5. Location of Well
UNIT LETTER M LOCATED 850 FEET FROM THE South LINE
850 FEET FROM THE West LINE OF SEC. 20 TWP. 29N RGE. 10W NMPN

7. Well Agreement Letter

8. Name of Lease Name

Haney Gas Com "B"

9. Well No.

IE

10. Field and Pool, or Wildcat

Basin Dakota

12. County
San Juan

13. Proposed Depth
6490'
14A. Formation
Dakota
15. Rotary or C.T.
Rotary
16. Elevations (bottom of hole, etc.)
5469' GL
21A. Kind & Status Plug. Bond
Statewide
21B. Drilling Contractor
Unknown
22. Approx. Date Work will start
As soon as permitted

PROPOSED CASING AND CEMENT PROGRAM

SIZE OF HOLE	SIZE OF CASING	WEIGHT PER FOOT	SETTING DEPTH	SACKS OF CEMENT	EST. TOP
12-1/4	8-5/8	K-55 24#	300'	300sx	Surface
7-7/8	4-1/2	K-55 10.5#	6490'	1290sx	Surface

Amoco proposes to drill the above well to further develop the Basin Dakota reservoir. The well will be drilled to the surface casing point using native mud. The well will then be drilled to TD with a low solids nondispersed mud system. Completion design will be based on open hole logs. Copy of all logs will be filed upon completion. Amoco's standard blowout prevention will be employed; see attached drawing for blowout preventer design.

Upon completion the well location will be cleaned and the reserve pit filled and leveled.

Gas produced from this well is dedicated to El Paso Natural Gas Company.

Application for an unorthodox location has been filed with the Santa Fe Office of the NMCCD.

APPROVAL VALID
FOR 90 DAYS UNLESS
DRILLING COMMENCED,

EXPIRES 2-1-81

IN ABOVE SPACE DESCRIBE PROPOSED PROGRAM IF PROPOSAL IS TO DEEPEN OR PLUG BACK, GIVE DATA ON PRESENT PRODUCTIVE ZONE AND PROPOSED NEW PRODUCTION ZONE. GIVE BLOWOUT PREVENTER PROGRAM, IF ANY.

I hereby certify that the information above is true and complete to the best of my knowledge and belief.

Original Signed By W. L. Roberts Title District Engineer Date October 29, 1980

(This space for State Use)

SUPERVISOR DISTRICT # 3

NOV 3 1980

APPROVED BY Frank J. Perry TITLE _____ DATE _____

CONDITIONS OF APPROVAL, IF ANY

~~Stoddard 10/29/80~~

All distances must be from the outer boundaries of the Section.

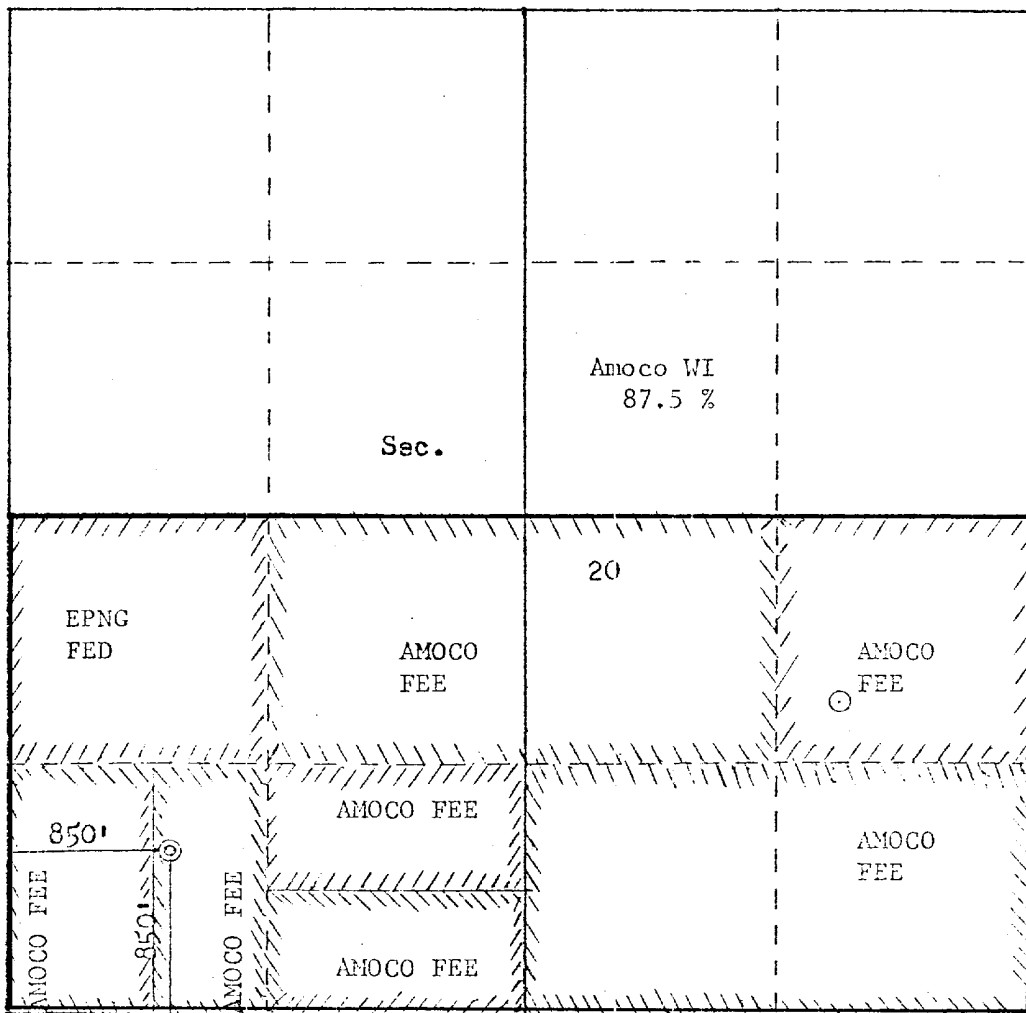
Operator AMOCO PRODUCTION COMPANY			Lease HANEY GAS COM "B"		Well No. 1E
Unit Letter M	Section 20	Township 29N	Range 10W	County San Juan	
Actual Footage Location of Well: 850 feet from the South line and 850 feet from the West line					
Ground Level Elev. 5469	Producing Formation Dakota		Pool Basin Dakota	Dedicated Acreage: 320 Acres	

1. Outline the acreage dedicated to the subject well by colored pencil or hatchure marks on the plat below.
2. If more than one lease is dedicated to the well, outline each and identify the ownership thereof (both as to working interest and royalty).
3. If more than one lease of different ownership is dedicated to the well, have the interests of all owners been consolidated by communitization, unitization, force-pooling, etc?

☒ Yes ☐ No If answer is "yes," type of consolidation Communitization

If answer is "no," list the owners and tract descriptions which have actually been consolidated. (Use reverse side of this form if necessary.)

No allowable will be assigned to the well until all interests have been consolidated (by communitization, unitization, forced-pooling, or otherwise) or until a non-standard unit, eliminating such interests, has been approved by the Commission.



CERTIFICATION

I hereby certify that the information contained herein is true and complete to the best of my knowledge and belief.

W. L. Peterson
Name

W. L. Peterson

Position

District Engineer

Company

Amoco Production Company

Date

9-23-80

I hereby certify that the location shown on this plat as plotted from field notes of actual surveys made by me or under my supervision, and that the same is true and correct to the best of my knowledge and belief.

Date Surveyed

September 15, 1980

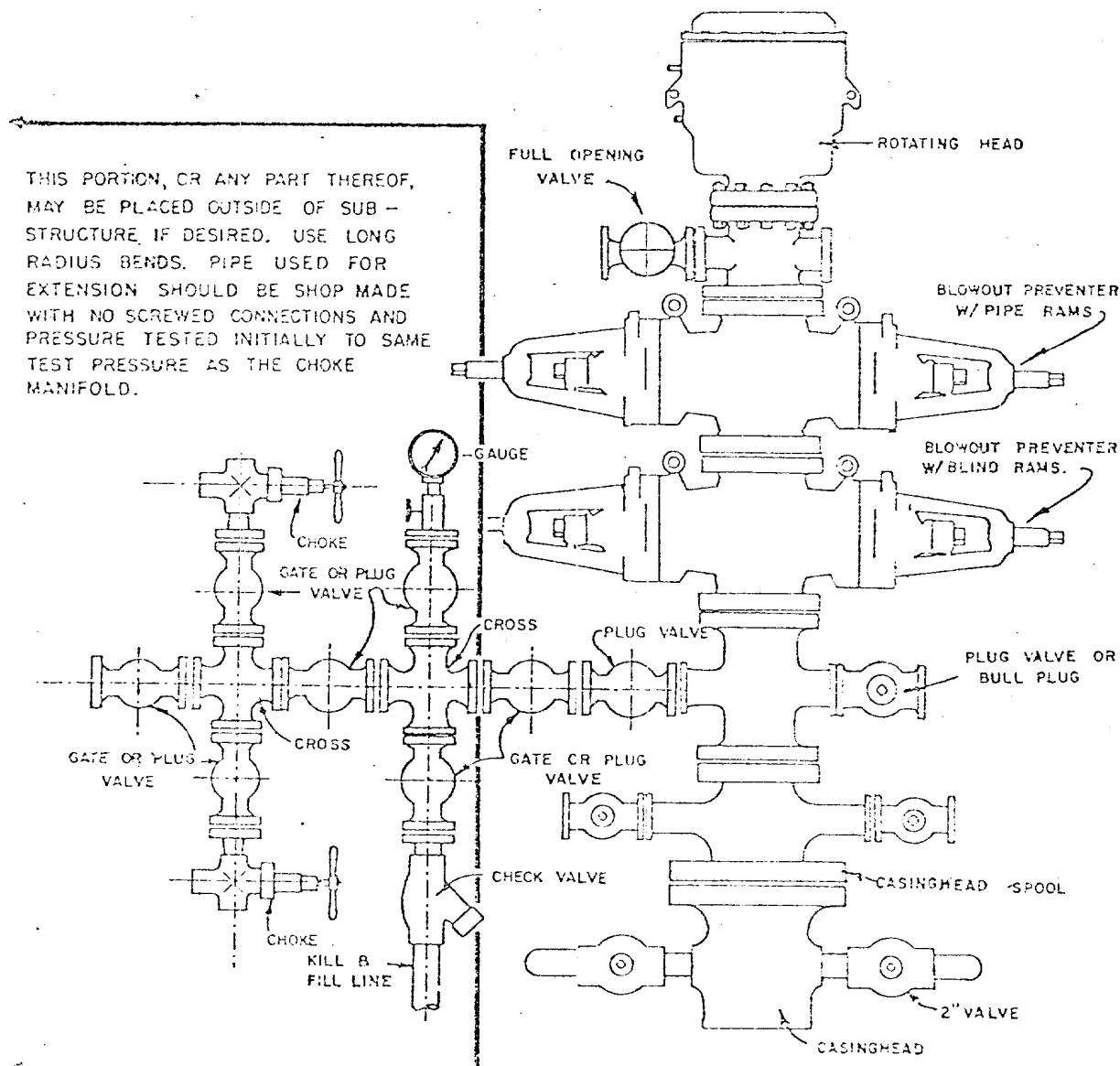
Registered Professional Engineer and Land Surveyor

Fred B. Kerr Jr.
Fred B. Kerr Jr.

Certificate No.

3950

1. Blowout Preventers and Master Valve to be fluid operated, and all fittings must be in good condition.
2. Equipment through which bit must pass shall be as large as the inside diameter of the casing that is being drilled through.
3. Nipple above Blowout Preventer shall be same size or larger than BOP being drilled through.
4. All fittings to be flanged.
5. Omsco or comparable safety valve must be available on rig floor at all times with proper connection or sub. The I.D. of safety valve should be as great as I.D. of tool joints of drill pipe, or at least as great as I.D. of drill collars.



BLOWOUT PREVENTER HOOKUP

API Series # 900



EXHIBIT D-4

OCTOBER 16, 1969

Operation of BOP by closing both pipe and blind rams will be tested each trip or, on long bit runs, pipe rams will be closed once each 24 hours.