

STATE OF NEW MEXICO
ENERGY AND MINERALS DEPARTMENT

OIL CONSERVATION DIVISION

P. O. BOX 2088
SANTA FE, NEW MEXICO 87501

Form C-101
Revised 10-1-78

NO. OF COPIES RECEIVED	
DISTRIBUTION	
SANTA FE	
FILE	
U.S.G.S.	
LAND OFFICE	
OPERATOR	

5A. Indicate Type of Lease
STATE ☐ FEE ☒

5. State Oil & Gas Lease No.

APPLICATION FOR PERMIT TO DRILL, DEEPEN, OR PLUG BACK

1a. Type of Work DRILL <input type="checkbox"/> DEEPEN <input type="checkbox"/> PLUG BACK <input type="checkbox"/>		7. Unit Agreement Name Communitized No. SW43
b. Type of Well OIL WELL <input type="checkbox"/> GAS WELL <input type="checkbox"/> OTHER <input type="checkbox"/> SINGLE ZONE <input checked="" type="checkbox"/> MULTIPLE ZONE <input type="checkbox"/>		8. Farm or Lease Name Mangum
2. Name of Operator Supron Energy Corporation		9. Well No. 1-E
3. Address of Operator P.O. Box 808, Farmington, New Mexico 87401		10. Field and Pool, or Wildcat Basin Dakota
4. Location of Well UNIT LETTER F LOCATED 1520 FEET FROM THE North LINE AND 1735 FEET FROM THE West LINE OF SEC. 27 TWP. 29-N RGE. 11-W NMPM		12. County San Juan
19. Proposed Depth 6250 Ft.		19A. Formation Dakota
20. Rotary or C.T. Rotary		21. Elevations (Show whether DF, RT, etc.) 5422 GR
21A. Kind & Status Plug. Bond Current \$50,000. Blanket		21B. Drilling Contractor Brinkerhoff
22. Approx. Date Work will start January 15, 1981		

PROPOSED CASING AND CEMENT PROGRAM

SIZE OF HOLE	SIZE OF CASING	WEIGHT PER FOOT	SETTING DEPTH	SACKS OF CEMENT	CONEST. TOP
12-1/4"	8-5/8"	24.00	250 Ft.	150 sx.	Circulated
7-7/8"	4-1/2"	10.50	6250 Ft.	1250 sx.	Circulated

It is our intention to drill this well to T.D. of approximately 6250 (+) using mud as the circulating medium. New 8-5/8" surface casing will be run then cemented with the cement being circulated to surface. Drill out from under surface with a 7-7/8" bit to T.D. Run new 4-1/2" pipe and cement as follows: 1st stage 350 sx of 50-50 poz w/2% gel. Set D.V. tool at approximately (+) 4300 ft. and cement with 250 sx of 50-50 poz w/2% gel and 6# Gilsonite/sx. Set D.V. tool at approximately 2750 ft. and cement with 450 sx of 65-35-6 w/12-1/2# Gilsonite/sx and 200 sx of 50-50 poz w/2% gel and 6# Gilsonite. Pressure test the casing. Perforate the Dakota zone. Fracture zone to stimulate production. Clean well up and run tubing. Nipple down well head. Test well and connect to a Gathering system.

The B.O.P. schematic is attached.

This gas has previously been dedicated to a purchaser.

APPROVAL VALID
FOR 90 DAYS UNLESS
DRILLING COMMENCED,

IN ABOVE SPACE DESCRIBE PROPOSED PROGRAM; IF PROPOSAL IS TO DEEPEN OR PLUG BACK, GIVE DATA ON PRESENT PRODUCTIVE ZONE AND PROPOSED NEW PRODUCTIVE ZONE. GIVE BLOWOUT PREVENTER PROGRAM, IF ANY.

I hereby certify that the information above is true and complete to the best of my knowledge and belief.

Signed Charles Gholsom Title Area Superintendent Date November 13, 1980

(This space for State Use)

Original Signed by CHARLES GHOLSON

DEPUTY OIL & GAS INSPECTOR, DIST. #3

NOV 17 1980

APPROVED BY _____ TITLE _____ DATE _____

CONDITIONS OF APPROVAL, IF ANY:

**NEW MEXICO OIL CONSERVATION COMMISSION
WELL LOCATION AND ACREAGE DEDICATION PLAT**

Form C-102
Supersedes C-121
Effective 1-1-65

All distances must be from the outer boundaries of the Section.

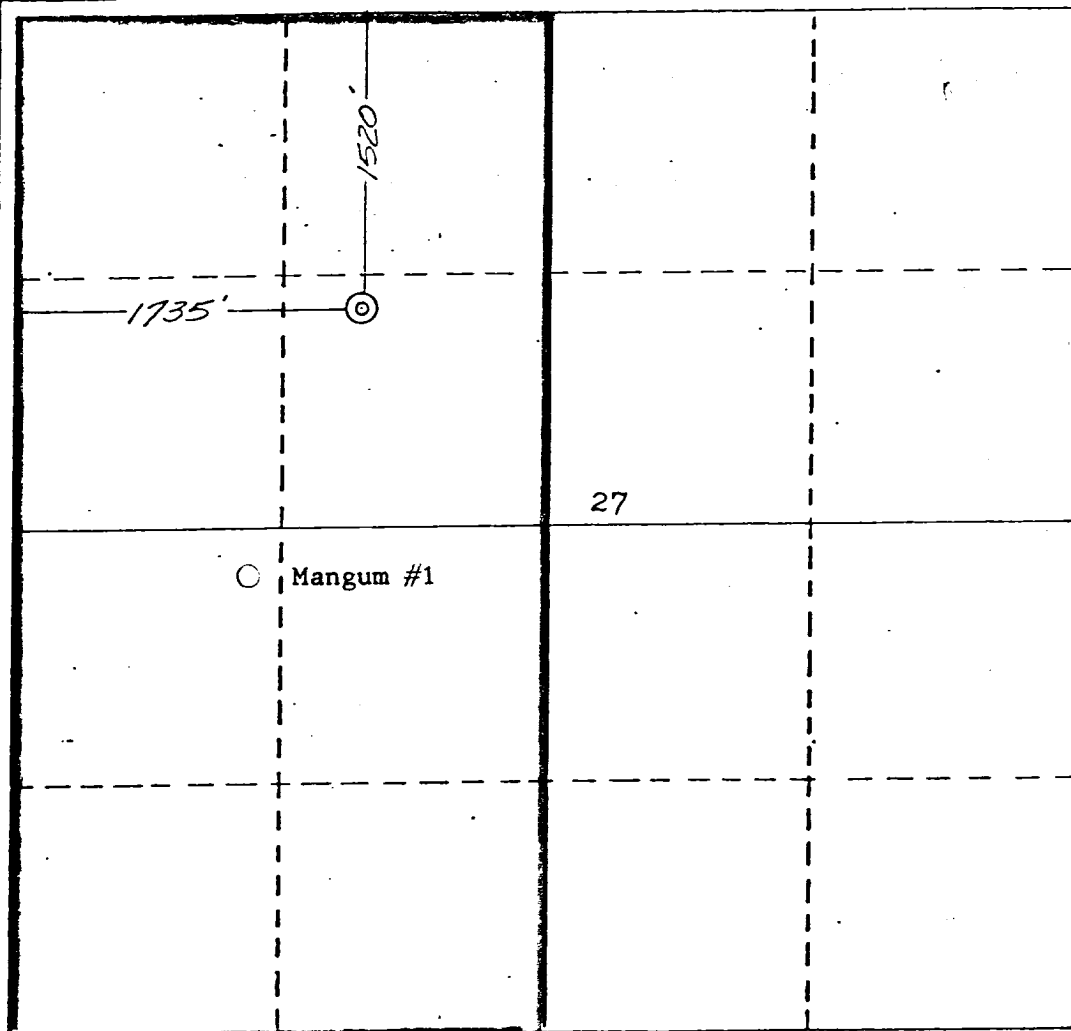
Operator SUPRON ENERGY CORPORATION			Lease MANGUM		Well No. 1-E
Unit Letter F	Section 27	Township 29 NORTH	Range 11 WEST	County SAN JUAN	
Actual Footage Location of Well: <div style="display: flex; justify-content: space-between;"> 1520 feet from the NORTH line and 1735 feet from the WEST line </div>					
Ground Level Elev. 5422	Producing Formation Dakota	Pool Basin	Dedicated Acreage: W$\frac{1}{2}$ 320.00 Acres		

- Outline the acreage dedicated to the subject well by colored pencil or hatchure marks on the plat below.
- If more than one lease is dedicated to the well, outline each and identify the ownership thereof (both as to working interest and royalty).
- If more than one lease of different ownership is dedicated to the well, have the interests of all owners been consolidated by communitization, unitization, force-pooling, etc?

☒ Yes ☐ No If answer is "yes," type of consolidation Communitized SW 43

If answer is "no," list the owners and tract descriptions which have actually been consolidated. (Use reverse side of this form if necessary.) _____

No allowable will be assigned to the well until all interests have been consolidated (by communitization, unitization, forced-pooling, or otherwise) or until a non-standard unit, eliminating such interests, has been approved by the Commission.



CERTIFICATION

NOV 17 1980

OIL & GAS COM.

DIST. 3

I hereby certify that the information contained herein is true and complete to the best of my knowledge and belief.

Rudy D. Motto
Name
Rudy D. Motto
Position
Area Superintendent
Company
SUPRON ENERGY CORPORATION
Date
October 30, 1980

REGISTERED PROFESSIONAL ENGINEER & LAND SURVEYOR

STATE OF NEW MEXICO

NO. 1463

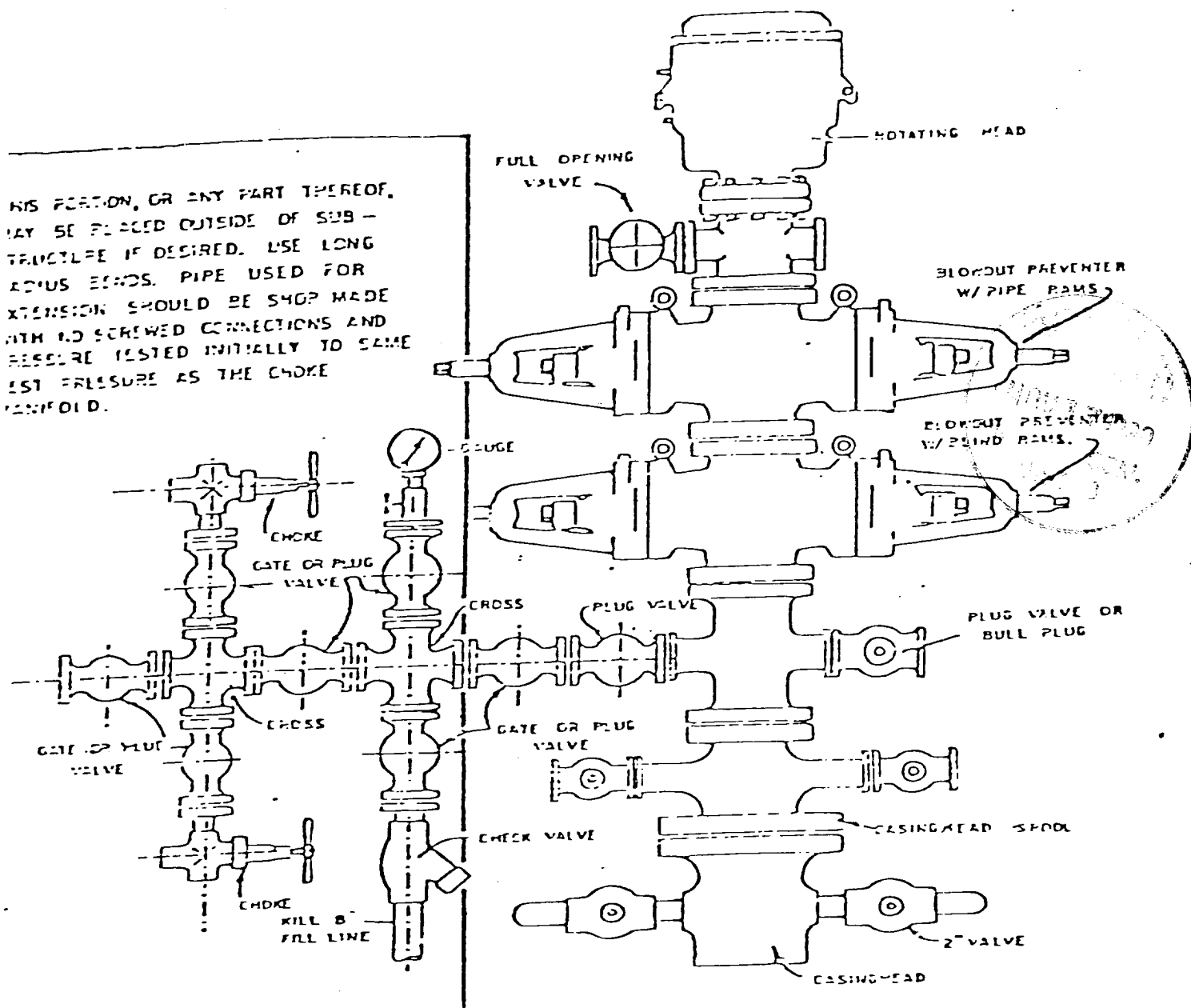
1980. LEASE

I hereby certify that the well location shown on this plat was plotted from field notes, actual survey, made by me or under my supervision, and that the same is true and correct to the best of my knowledge.

Date Surveyed
October 23, 1980
Registered Professional Engineer and/or Land Surveyor
James P. Leese
James P. Leese
Certificate No.
1463

Blowout Preventer will be tested daily and prior to drilling out with the results to be logged on the drillers report.

The B.O.P. and all valve and fittings are rated at 3000 psi working pressure, and hydraulically operated



BLOWOUT PREVENTER HOOKUP