

MANANA GAS, INC.

Maxey Federal #1 J
SE/NE, H, Section 24, T 29N, R 12W
San Juan County, New Mexico

13 POINT SURFACE USE PLAN

1. Existing Roads Map A (Shown in Red)

- A. Survey Plat attached.
- B. Approximately 4 miles west and 1 mile north of Bloomfield, NM.
- C. Refer to Map A.
- D. Refer to Map A.
- E. The existing roads are maintained by the petroleum industry for access to existing wells.

2. Planned Access Road Refer to Map A (Shown in Green)

The location is approximately 400' west of an existing road.

- A. Width - 20' flat bladed
- B. Maximum grade - 6% or less
- C. Turnouts - none
- D. Drainage design - will follow existing drainage.
- E. Culverts - none needed
- F. Surface materials - none needed
- G. Cattleguards - none needed
- H. New access road will be flagged.

3. Location of Existing Wells in This Section

- A. Water wells - none
- B. Abandoned wells - none
- C. Temporarily abandoned wells - none
- D. Disposal wells - none
- E. Drilling wells - none
- F. Producing wells - see Map B
- G. Shut in wells - none
- H. Injection wells - none
- I. Monitoring or Observation wells - none

4. Location of Existing or Proposed Facilities

A. Existing within this section

- 1. Tank batteries - one tank at each Dakota well in the section.
- 2. Producing facilities - Separator and dehydrator at each Dakota well in section.

3. Oil gathering lines - none
4. Gas gathering lines - See Map B.
5. Injection lines - none
6. Disposal lines - none

B. New Facilities Contemplated

This well will not require separation equipment or tank battery.

C. Rehabilitation

Rehabilitation of disturbed areas no longer needed for operations will be accomplished by grading, leveling and reseeding as agreed upon at the time with the surface owner's representative.

5. Location and Type of Water Supply

- A. Water will be obtained from the Citizens Ditch in NW/4 of Section 24.
- B. Water will be trucked to the location.
- C. No water well will be needed at this location.

6. Source of Construction Material

All fill material will be taken from the excess spoil from the required construction of this location.

7. Methods for Handling Waste Disposal

- A. Cuttings will be retained in the reserve pit.
- B. Drilling fluids will be contained in a reserve pit until the well is completed.
- C. Little or no oil is anticipated at this location.
Little or no water is anticipated at this location.
- D. A portable toilet will be provided.
- E. A fenced burn pit will be provided for trash. The reserve pit will be fenced when the rig leaves the location.
- F. Location and mud pits will be regraded and seeded as soon as feasible after the well is completed. The area will be cleaned of all debris.

8. Ancilliary Facilities

No camp or airstrip is planned.

9. Well Site Layout

- A. Refer to Rig Layout Sheet

- B. Refer to Rig Detail Sheet.
- C. Refer to Rig Detail Sheet.
- D. The pits will not be lined.

10. Surface Restoration Plan

- A. In the event of a dry hole the pits will be allowed to dry and will then be back filled. The location will be restored to as near the original contour as feasible, then seeded. Spoil materials will be segregated and either burned or buried.
- B. Revegetation will be achieved by seeding with a mixture approved by a representative of the surface owner.
- C. Pits will be fenced at time of rig release and until area is recontoured.
- D. Overhead flagging will be installed if oil is in or on the pit.
- E. Rehabilitation operations will begin as soon as practical after the rig is off location and should be completed before winter 1981.

11. Other Information

- A. The area is gentle-rolling hills being a brown sandy loam with rounded boulders on the surface. The flora consists of native grasses with some four wing salt bush and juniper. The fauna consists of native birds, mule deer, antelope, coyotes and rodents.
- B. The surface is public domain.
- C. The natural drainage is to the south southwest to the San Juan River approximately 1 mile south.

12. Operator's Representatives

A. R. Kendrick
Farmington, New Mexico
Phone (505) 325-3066
(505) 334-2555

Ed Hartman
Farmington, New Mexico
Phone (505) 325-3066

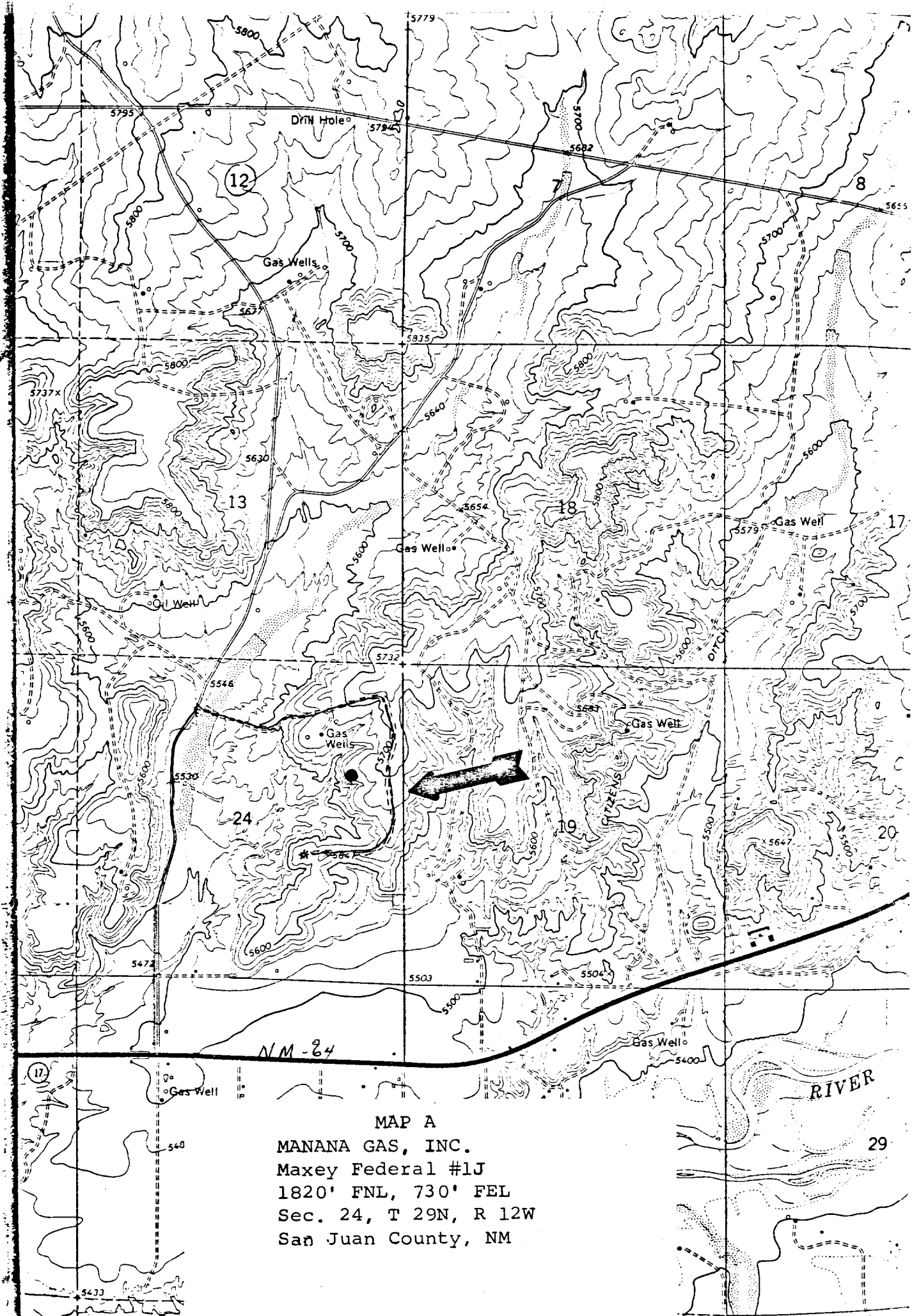
13. Certification

I hereby certify that I have inspected the proposed drillsite and access route; that I am familiar with the conditions which presently exist; that the statements made in this plan are to the best of my knowledge true and correct; and the work associated with the operations proposed herein will be performed by MANANA GAS, INC. and its contractors and subcontractors in conformity with this plan and the terms and conditions under which it is approved.

Date

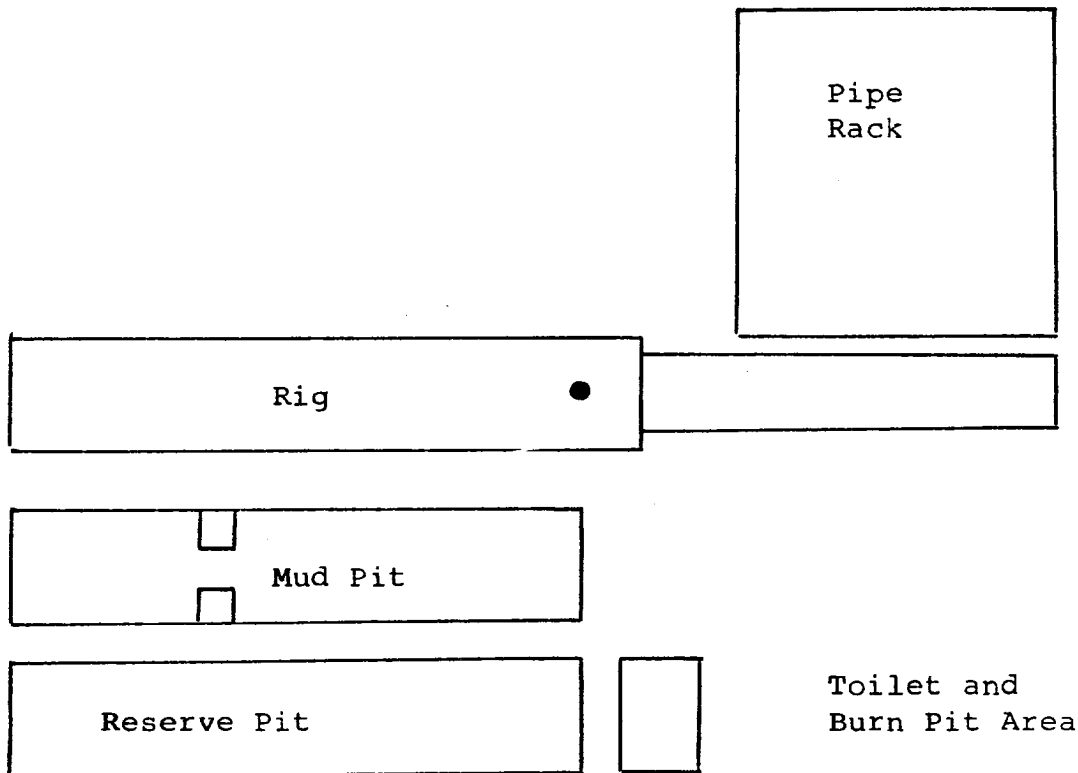
11/4/80

A. R. Kendrick
A. R. Kendrick
Vice President



MAP A
MANANA GAS, INC.
Maxey Federal #1J
1820' FNL, 730' FEL
Sec. 24, T 29N, R 12W
San Juan County, NM

North



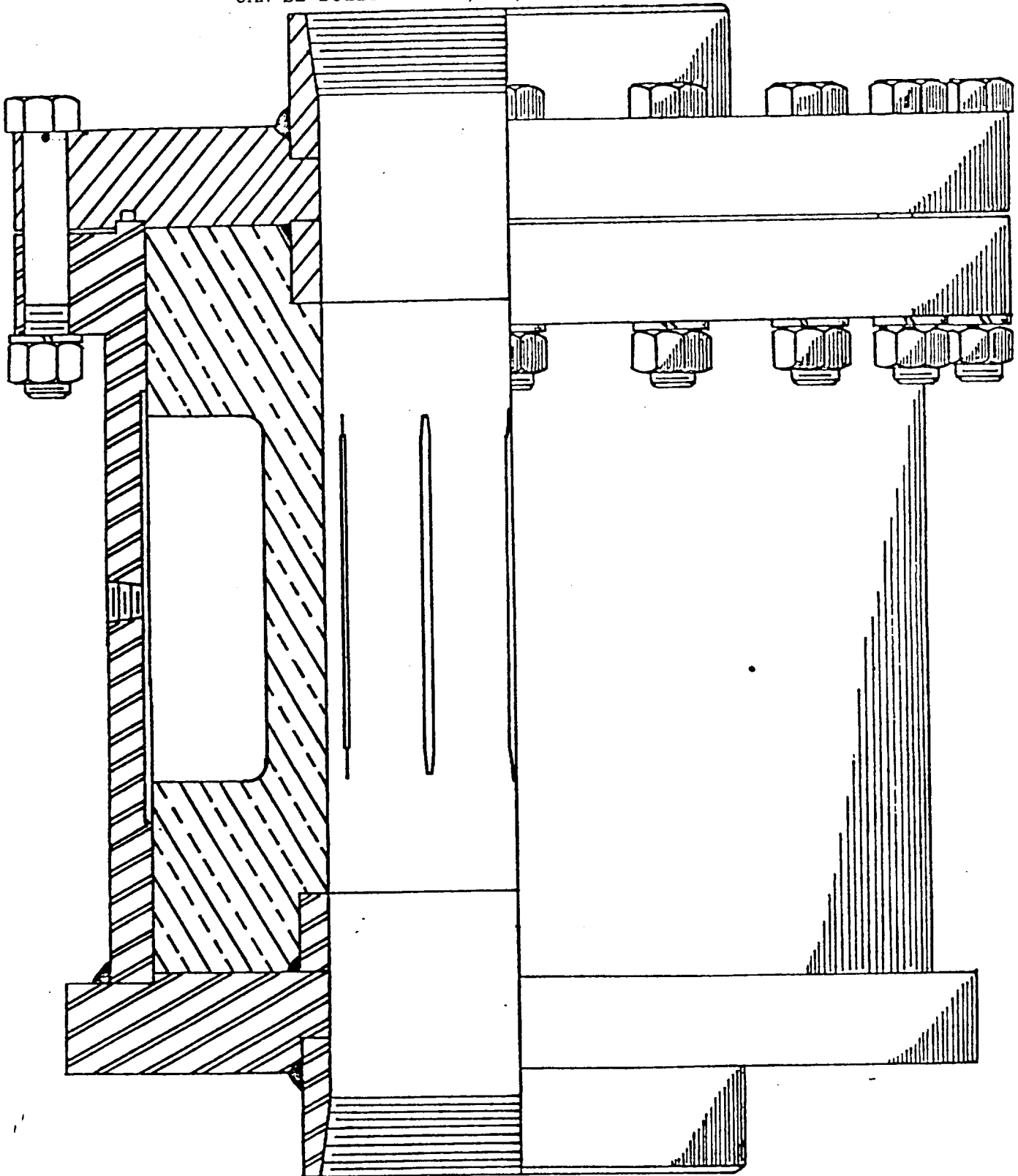
Scale: 1" = 20'

RIG DETAIL

MANANA GAS, INC.
MAXEY FEDERAL #1J
H-24-T29N-T12W

TYPE K - REGULAR BLOWOUT PREVENTER WITH SCREWED TOP
AND BOTTOM

CAN BE BUILT FOR 7", 8", 10", 11", 12" AND 13"



ADAPTER FLANGE - IS ESPECIALLY USEFUL IN LOCALITIES WHERE DEEP COLLARS ARE NOT AVAILABLE, AS IT WILL PROVIDE THE SHORTEST POSSIBLE HOOK - UP.

FLANGES - WHEN ASSEMBLED ON BOTH ENDS, PRESENTS THE STANDARD HOOK-UP WHICH MAYBE PLACED IN ANY POSITION IN THE CELLAR BY EMPLOYING NIPPLES IF SUITABLE LENGTH. EITHER ABOVE OR BELOW THE BLOWOUT PREVENTER THE CUSTOM IN THE HOOK - UP CALLS FOR A WELDED MUD LINE CONNECTIONS.

SPOOL - IS FOR THE PURPOSE OF FLANGEING DIRECT TO ANY OTHER TYPE OF BLOWOUT PREVENTER OR TO A MASTER GATE.

REGAN TYPE K RUBBER

THE RUBBER PACKER IS AN INGENIOUS DESIGN WHICH CONTRACTS WHEN PRESSURE IS APPLIED. ITS METHOD OF OPERATION IS BEST UNDERSTOOD BY REFERING TO THE CUT - AWAY SECTION.

