

NO. OF COPIES RECEIVED	
DISTRIBUTION	
SANTA FE	
FILE	
U.S.G.S.	
LAND OFFICE	
OPERATOR	

# NEW MEXICO OIL CONSERVATION COMMISSION

30-045-24742

Form O-191  
Revised 1-1-65

5A. Indicate Type of Lease  
STATE ☐ FILE ☒

5. State Oil & Gas Lease No.

## APPLICATION FOR PERMIT TO DRILL, DEEPEN, OR PLUG BACK

a. Type of Work

DRILL ☒

DEEPEN ☐

PLUG BACK ☐

b. Type of Well

OIL WELL ☒

GAS WELL ☐

OTHER

SINGLE ZONE ☐

MULTIPLE ZONE ☐

c. Name of Operator

S & I OIL COMPANY

d. Address of Operator

413 W. Main Street Farmington, New Mexico 87401

e. Location of Well

UNIT LETTER E

LOCATED 1980

FEET FROM THE North

LINE

NO 660

FEET FROM THE West

LINE OF SEC. 12

TWP. 29N

RGE. 15W

NMPM

7. Unit Agreement Name

8. Farm or Lease Name

Moore

9. Well No.

1

10. Field and Pool, or Wildcat

Cha Cha Gallup

12. County  
San Juan

19. Proposed Depth

4700'

19A. Formation

Gallup

20. Rotary or C.T.

Rotary

1. Elevations (Show whether DF, RT, etc.)

5193' GL

21A. Kind & Status Plug. Bond

Individual Well

21B. Drilling Contractor

To be determined

22. Approx. Date Work will start

December 28, 1980

3.

### PROPOSED CASING AND CEMENT PROGRAM

SIZE OF HOLE	SIZE OF CASING	WEIGHT PER FOOT	SETTING DEPTH	SACKS OF CEMENT	EST. TOP
12-1/4"	8-5/8"	24.0	350'	350	Surface
5-5/8"	4-1/2"	10.50	4700'	300 & 350	1400'

It is proposed to drill this well with rotary tools, using water base mud as circulation medium through the Gallup formation. Possible productive intervals in the Gallup will be completed. Production casing will be cemented in such a manner to protect the Gallup and Mesa Verde formations.

### ESTIMATED FORMATION TOPS

Pictured Cliffs	300'	Point Lookout	2900'
Cliff House	1350'	Gallup	4100'
Menefee	2000'		

This s/2, NW/4, Sec. 12 is dedicated to this well.

The natural gas produced from this well is not committed.

ABOVE SPACE DESCRIBE PROPOSED PROGRAM: IF PROPOSAL IS TO DEEPEN OR PLUG BACK, GIVE DATA ON PRESENT PRODUCTION ZONE AND PROPOSED NEW PRODUCTION ZONE. GIVE BLOWOUT PREVENTER PROGRAM, IF ANY.

I hereby certify that the information above is true and complete to the best of my knowledge and belief.

FOR THE COMPANY

ORIGINAL SIGNED BY

EWELL N. WALSH

EWELL N. WALSH, P.E.

Title Production Corporation

Date 12-23-80

(This space for State Use)

APPROVED BY

Frank J. Chang

TITLE

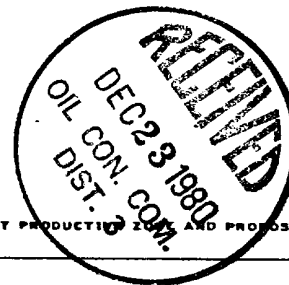
SUPERVISOR DISTRICT #3

DATE

DEC 23 1980

CONDITIONS OF APPROVAL, IF ANY:

Hold C-104 for communication



All distances must be from the outer boundaries of the Section.

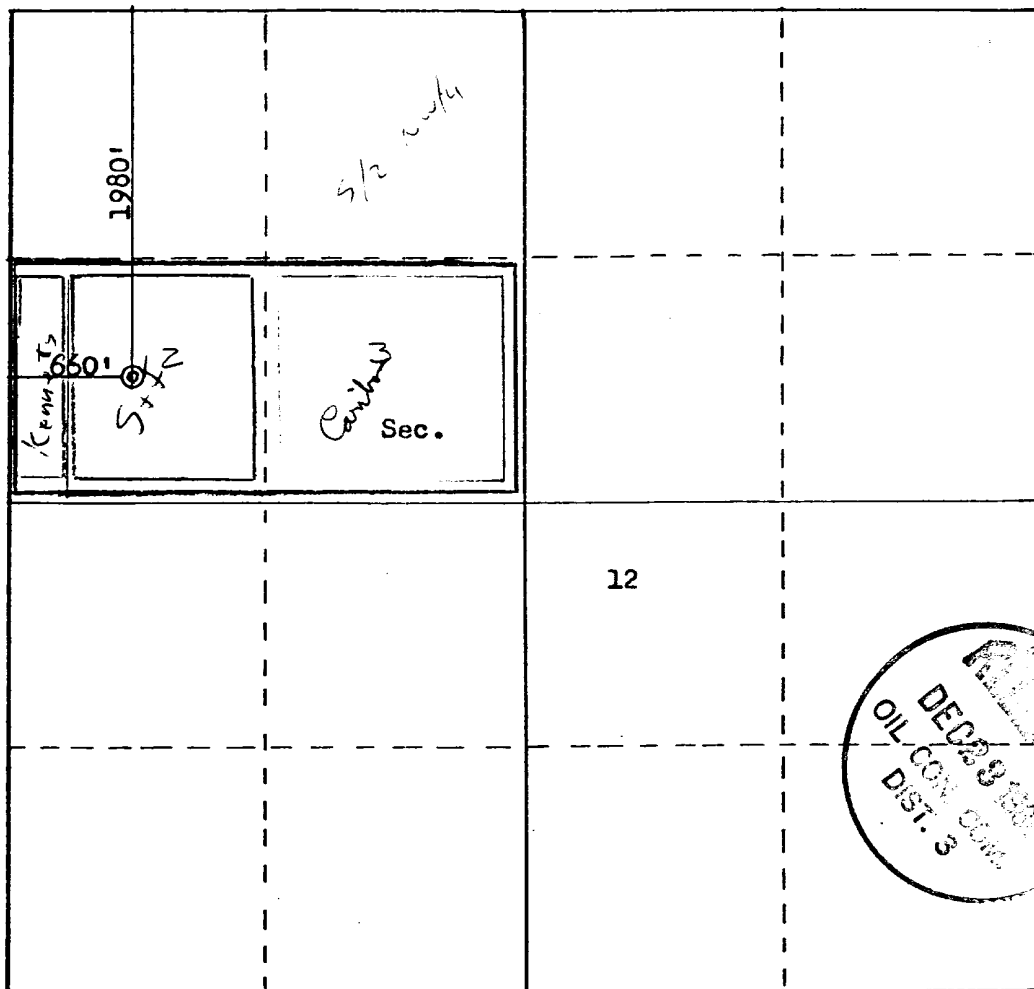
Operator <b>S &amp; I OIL COMPANY</b>		Lease <b>Moore</b>		Well No. <b>1</b>
Unit Letter <b>E</b>	Section <b>12</b>	Township <b>29N</b>	Range <b>15W</b>	County <b>San Juan</b>
Actual Footage Location of Well: <b>1980</b> feet from the <b>North</b> line and <b>660</b> feet from the <b>West</b> line				
Ground Level Elev. <b>5193</b>	Producing Formation <b>Gallup</b>	Pool <b>Cha Cha Gallup</b>	Dedicated Acreage: <b>80</b> Acres	

1. Outline the acreage dedicated to the subject well by colored pencil or hachure marks on the plat below.
2. If more than one lease is dedicated to the well, outline each and identify the ownership thereof (both as to working interest and royalty).
3. If more than one lease of different ownership is dedicated to the well, have the interests of all owners been consolidated by communitization, unitization, force-pooling, etc?

☐ Yes ☒ No If answer is "yes," type of consolidation Future Communitization

If answer is "no," list the owners and tract descriptions which have actually been consolidated. (Use reverse side of this form if necessary.) See Attached Exhibit "A"

No allowable will be assigned to the well until all interests have been consolidated (by communitization, unitization, forced-pooling, or otherwise) or until a non-standard unit, eliminating such interests, has been approved by the Commission.



Scale: 1"=1000'

CERTIFICATION	
I hereby certify that the information contained herein is true and complete to the best of my knowledge and belief.	
FOR ORIGINAL SIGNED BY: <b>EWELL N. WALSH</b>	
Name	Ewell N. Walsh, P.E. President
Position	Walsh Engineering & Prod. Corp
Company	December 23, 1980
Date	
I hereby certify that the well location shown on this plat was plotted from field notes of actual surveys made by me or under my supervision, and that the same is true and correct to the best of my knowledge and belief.	
Date Surveyed	September 19, 1980
Registered Professional Engineer and Land Surveyor	
Fred B. Kern, Jr.	
Certificate No.	3950

EXHIBIT "A"

S & I OIL COMPANY  
MOORE NO. 1  
1980'FNL, 660'FWL, SEC. 12-T29N-R15W  
San Juan County, New Mexico

ACREAGE DESCRIPTION

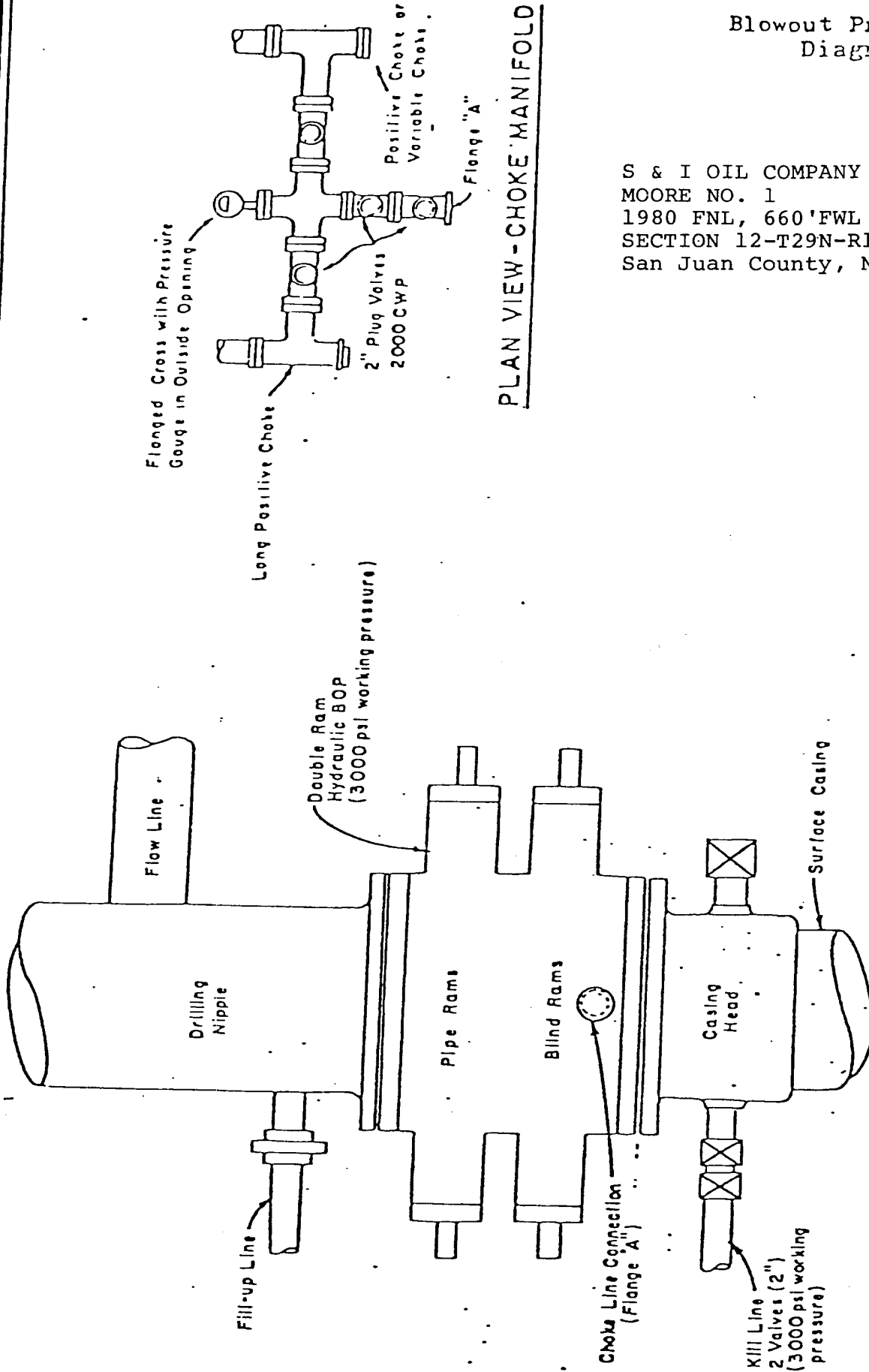
1. Nine acres, Walter L. Kennedy, Jr.
2. S & I Oil Company
3. Caribou Four Corners, Inc.

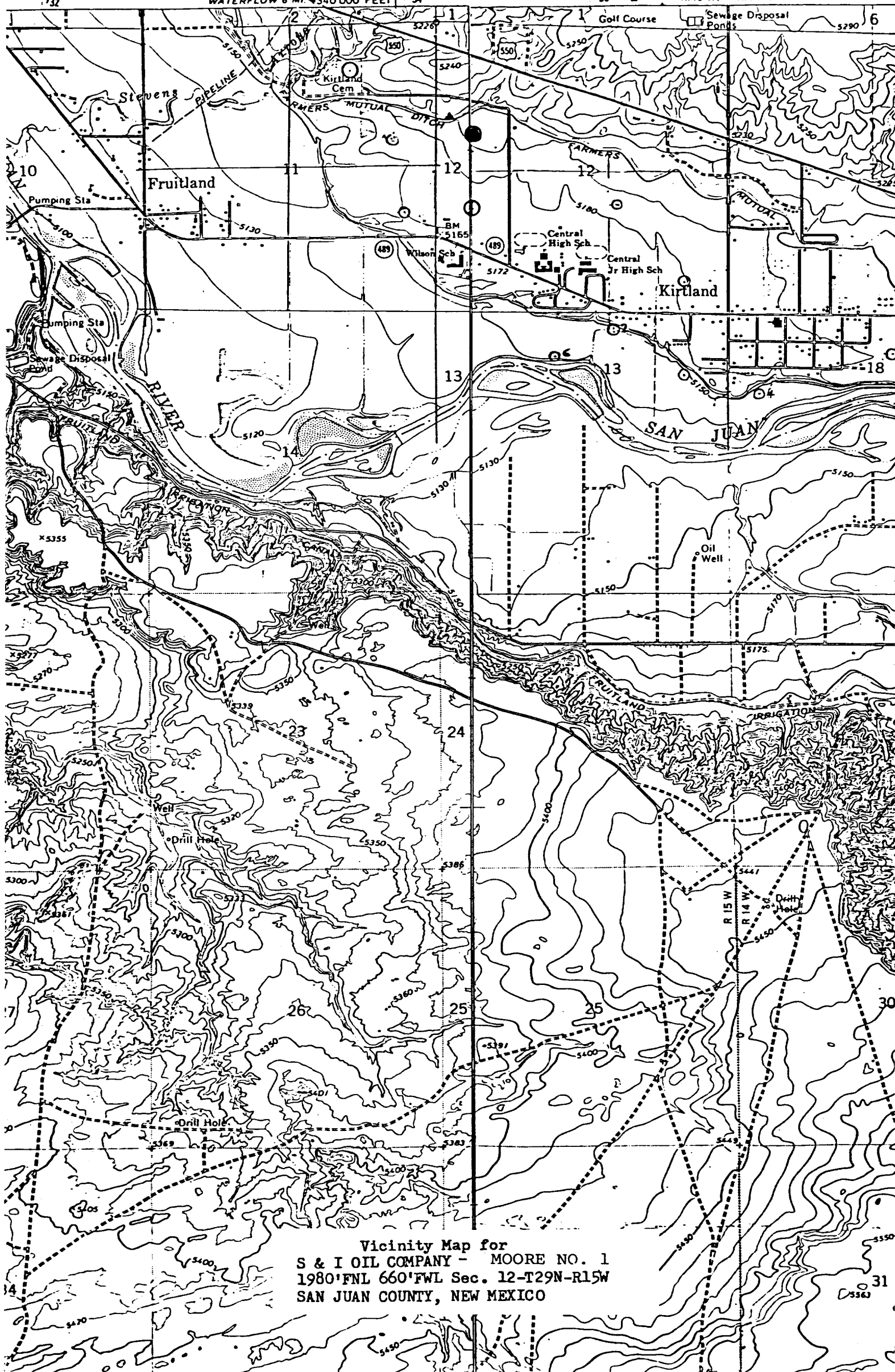
S & I OIL COMPANY  
MOORE NO. 1  
1980'FNL, 660'FWL, SEC. 12-T29N-R15W  
San Juan County, New Mexico

1. Surface Casing.  
See Application for Permit to Drill.
2. Spools and Flanges
  - A. Surface Casing - 8", Series 600, 2000 psig. W.P.
  - B. Production - 8", Series 900, 3000 psi W.P.
  - C. Tubing Head - Series 900, 300 psi W.P.
3. Intermediate Casing  
None
4. Blowout Preventers  
Production Hole - 10", 3000 psi  
Fill, Kill and choke manifold - 5000 psi. W.P.
5. Additional Equipment (if necessary)
  - A. Kelly Cock
  - B. Bit Float
  - C. Degasser
  - D. Pit Level Indicator
  - E. Sub with valve for drill pipe
6. Anticipated Bottom Hole Pressure  
2700 psig. Current mud program is for 9.2 lb./ gal. mud  
with hydrostatic head of 3032 psig at 6345'. Mud  
weight will be increased if necessary for higher pressures.
7. Drilling Fluid  
Gel-Water

# Blowout Preventer Diagram

S & I OIL COMPANY  
MOORE NO. 1  
1980 FNL, 660'FWL  
SECTION 12-T29N-R15W  
San Juan County, New Mexico





Vicinity Map for  
S & I OIL COMPANY - MOORE NO. 1  
1980'FNL 660'FWL Sec. 12-T29N-R15W  
SAN JUAN COUNTY, NEW MEXICO