

UNITED STATES  
DEPARTMENT OF THE INTERIOR  
GEOLOGICAL SURVEY

30-045-24760  
5. LEASE DESIGNATION AND SERIAL NO.  
SF 047020 A

6. IF INDIAN, ALLOTTEE OR TRIBE NAME

7. UNIT AGREEMENT NAME

8. FARM OR LEASE NAME  
Congress

9. WELL NO.  
10

10. FIELD AND POOL, OR WILDCAT  
Bloomfield Chacra

11. SEC., T., R., M., OR BLK.  
AND SURVEY OR AREA  
Sec. 35, T-29N, R-11W  
N.M.P.M.

12. COUNTY OR PARISH  
San Juan

13. STATE  
New Mexico

APPLICATION FOR PERMIT TO DRILL, DEEPEN, OR PLUG BACK

1a. TYPE OF WORK  
DRILL ☒ DEEPEN ☐ PLUG BACK ☐

b. TYPE OF WELL  
OIL WELL ☐ GAS WELL ☒ OTHER ☐ SINGLE ZONE ☐ MULTIPLE ZONE ☐

2. NAME OF OPERATOR  
Supron Energy Corporation

3. ADDRESS OF OPERATOR  
P.O. Box 808, Farmington, New Mexico 87401

4. LOCATION OF WELL (Report location clearly and in accordance with any State requirements.)  
At surface 965 Ft./South; 1790 Ft./West line  
At proposed prod. zone Same as above

14. DISTANCE IN MILES AND DIRECTION FROM NEAREST TOWN OR POST OFFICE\*  
2-1/2 Miles South East of Bloomfield, New Mexico

15. DISTANCE FROM PROPOSED\*  
LOCATION TO NEAREST  
PROPERTY OR LEASE LINE, FT.  
(Also to nearest drlg. unit line, if any)  
965 Ft.  
965 Ft.

18. DISTANCE FROM PROPOSED LOCATION\*  
TO NEAREST WELL, DRILLING, COMPLETED,  
OR APPLIED FOR, ON THIS LEASE, FT.  
488 Ft.

21. ELEVATIONS (Show whether DF, RT, GR, etc.)  
5722 Ft.

23. PROPOSED CASING AND CEMENTING PROGRAM

SIZE OF HOLE	SIZE OF CASING	WEIGHT PER FOOT	SETTING DEPTH	QUANTITY OF CEMENT
12-1/4"	7-5/8"	24.00	250 Ft.	150 Sx. Circulated
6-3/4"	2-7/8"	6.50	200 Ft.	300 Sx.

DRILLING OPERATIONS AUTHORIZED ARE  
SUBJECT TO COMPLIANCE WITH ATTACHED  
"PERMIT CONDITIONS"

We desire to drill 12-1/4" hole to T.D. of approximately 250 ft. Run new 7-5/8", 24.00#

casing & cmt. with approximately 150 sx of cmt. Cmt. to be circulated back to surface.  
Pressure test casing. Drill out with 6-3/4" bit to T.D. of approx. 3030 ft. using mud as  
a circulating medium. Log the well. Run 2-7/8", 6.50# casing & cmt. w/approx. 300 sx of  
65/35/6 covering the Ojo Alamo zone. Test the casing. Perforate & fracture the Chacra  
zone. Clean the well up and nipple down the well head. Test the well & connect to a  
gathering system.

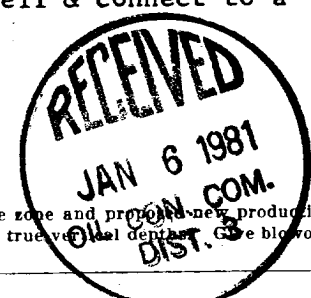
This gas has previously been dedicated to a transporter.

IN ABOVE SPACE DESCRIBE PROPOSED PROGRAM: If proposal is to deepen or plug back, give data on present productive zone and proposed new productive zone. If proposal is to drill or deepen directionally, give pertinent data on subsurface locations and measured and true vertical depths. Give blowout preventer program, if any.

24. SIGNED Rudy D. Mett TITLE Area Superintendent DATE December 16, 1980

(This space for Form 9-331 C use)  
APPROVED  
PERMIT NO. AS AMENDED APPROVAL DATE

APPROVED BY JAMES F. SIMS TITLE DISTRICT ENGINEER DATE JAN 05 1981



NWCC

**NEW MEXICO OIL CONSERVATION COMMISSION  
WELL LOCATION AND ACREAGE DEDICATION PLAT**

Form C-104  
Supersedes C-128  
Effective 1-1-65

All distances must be from the outer boundaries of the Section.

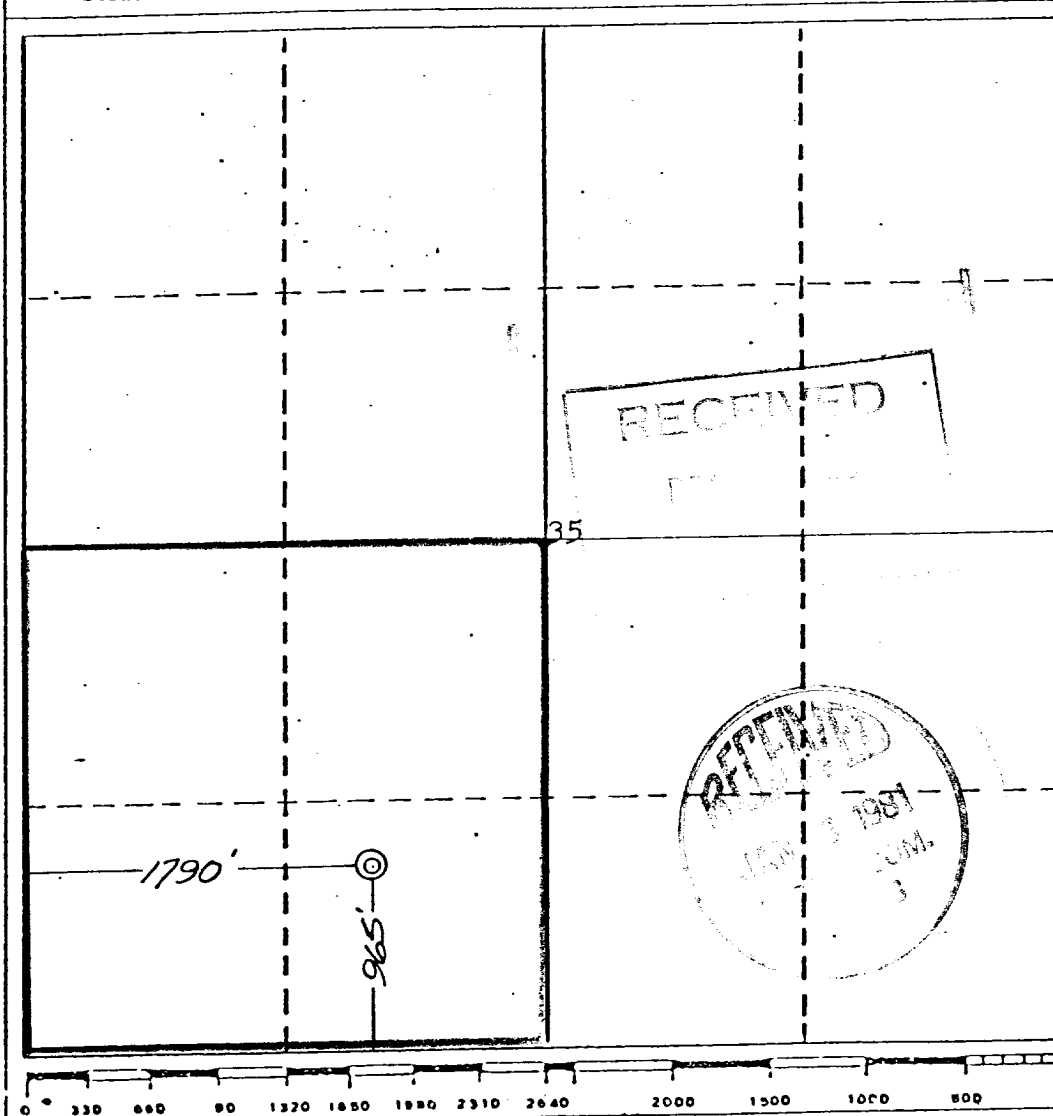
Operator <b>SUPRON ENERGY CORPORATION</b>			Lease <b>CONGRESS</b>		Well No. <b>10</b>
Unit Letter <b>N</b>	Section <b>35</b>	Township <b>29 NORTH</b>	Range <b>11 WEST</b>	County <b>SAN JUAN</b>	
Actual Footage Location of Well:					
<b>965</b> feet from the <b>SOUTH</b> line and		<b>1790</b> feet from the <b>WEST</b> line			
Ground Level Elev. <b>5722</b>	Producing Formation <b>Chacra</b>	Pool <b>Bloomfield</b>	Dedicated Acreage <b>SW 1/4 160.00</b> <b>158.70</b> Acres		

1. Outline the acreage dedicated to the subject well by colored pencil or hatchure marks on the plat below.
2. If more than one lease is dedicated to the well, outline each and identify the ownership thereof (both as to working interest and royalty).
3. If more than one lease of different ownership is dedicated to the well, have the interests of all owners been consolidated by communitization, unitization, force-pooling, etc?

☐ Yes ☐ No If answer is "yes," type of consolidation \_\_\_\_\_

If answer is "no," list the owners and tract descriptions which have actually been consolidated. (Use reverse side of this form if necessary.) \_\_\_\_\_

No allowable will be assigned to the well until all interests have been consolidated (by communitization, unitization, forced-pooling, or otherwise) or until a non-standard unit, eliminating such interests, has been approved by the Commission.

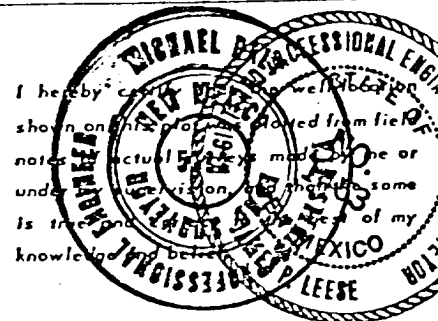


**CERTIFICATION**

I hereby certify that the information contained herein is true and complete to the best of my knowledge and belief.

*[Signature]*

Name  
**Rudy D. Motto**  
Position  
**Area Superintendent**  
Company  
**SUPRON ENERGY CORPORATION**  
Date



Date Surveyed  
**November 17, 1980**  
Registered Professional Engineer  
and/or Land Surveyor  
*[Signature]*  
**James P. Lease**  
Certificate No.  
**1463**

SUPRON ENERGY CORPORATION

POST OFFICE BOX 808

FARMINGTON, NEW MEXICO 87401

December 16, 1980

United States Geological Survey  
P.O. Box 959  
Farmington, New Mexico 87401

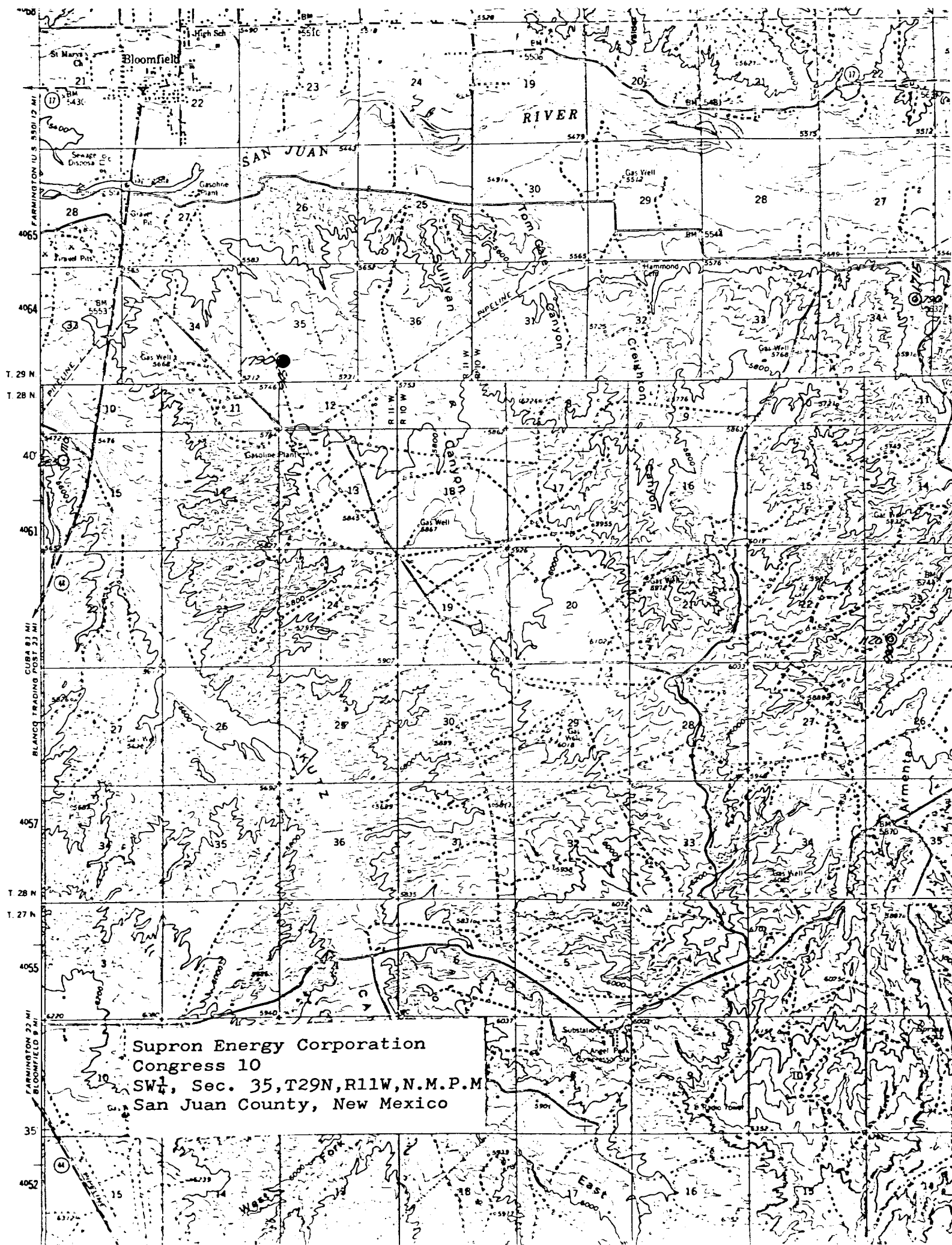
Attention: Mr. James Sims

Dear Sir:

Supron Energy Corporation proposes to drill the Congress No. 10 well located 965 feet from the South line and 1790 feet from the West line of Section 35, Township 29 North, Range 11 West, N.M.P.M, San Juan County, New Mexico.

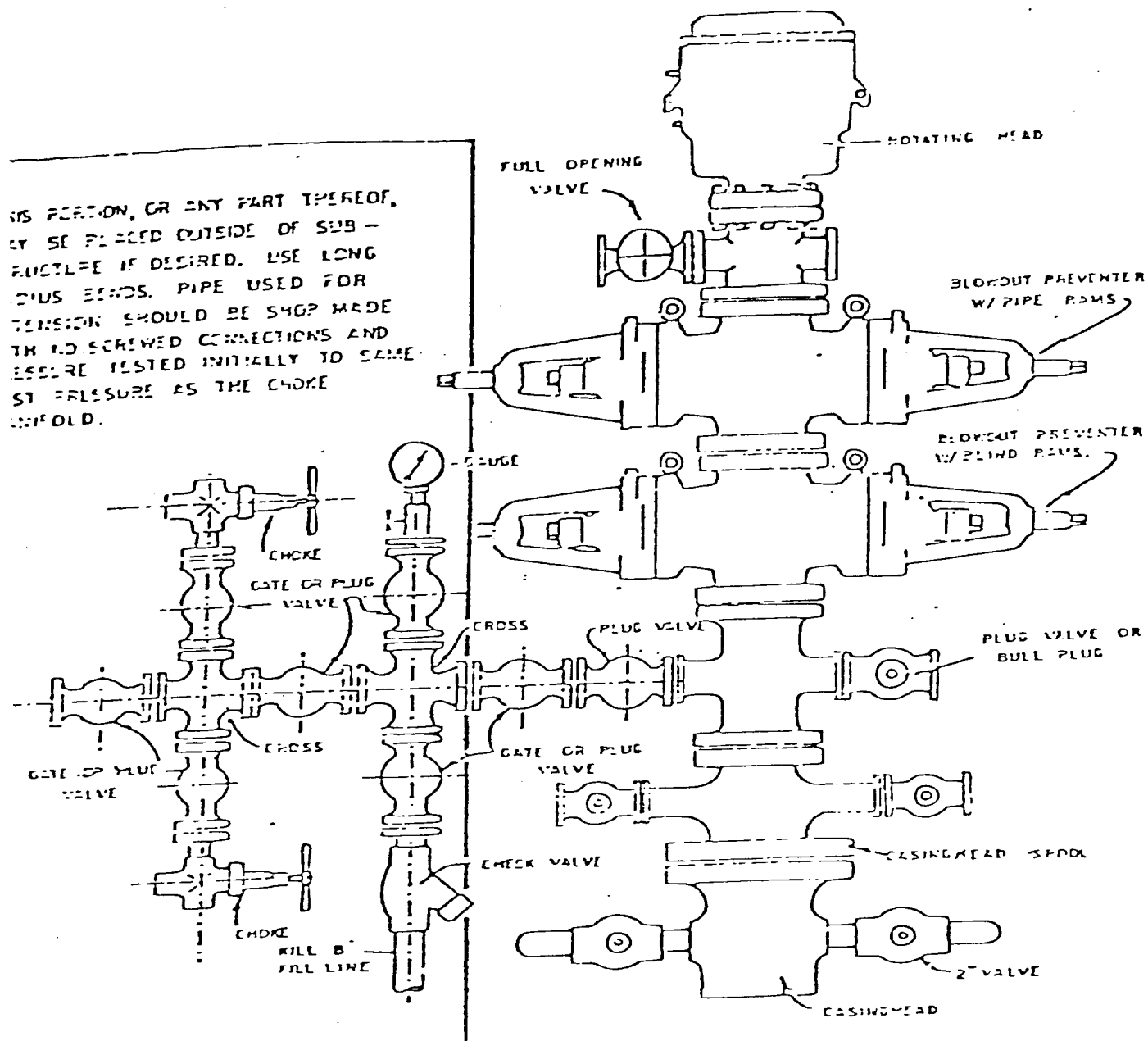
The following attachments are included with this application:

1. Map of existing roads.
2. Access road is to be 20 feet wide and 300 feet long approaching the well pad from the West.
3. Location of existing wells.
4. Lateral roads to well locations.
5. Location of surface equipment if required.
6. Drilling and completion water will be obtained from the San Juan river.
7. Waste will be disposed of by being placed in the reserve pit and buried upon completion of the well.
8. There will be no camp at or near the well site.
9. There will be no air strip.
10. A plat is attached showing the location of the rig, mud tanks, reserve pit, burn pit and etc.
11. A letter of certification is attached. The operator representative, for compliance purposes, is Rudy D. Motto, Area Superintendent, P.O. Box 808, Farmington, New Mexico. Phone (505) 325-3587.
12. After the well is completed the location will be cleaned up and bladed. The reserve pit will be allowed to dry then it will be filled and restored to its natural state.
13. The soil is sandy loam with the principal vegetation being sage brush, ricegrass, gramma and prickley pear cactus.



Blowout Preventer will be tested daily and prior to drilling out with the results to be logged on the drillers report.

The B.O.P. and all valve and fittings are rated at 3000 psi working pressure, and hydraulically operated



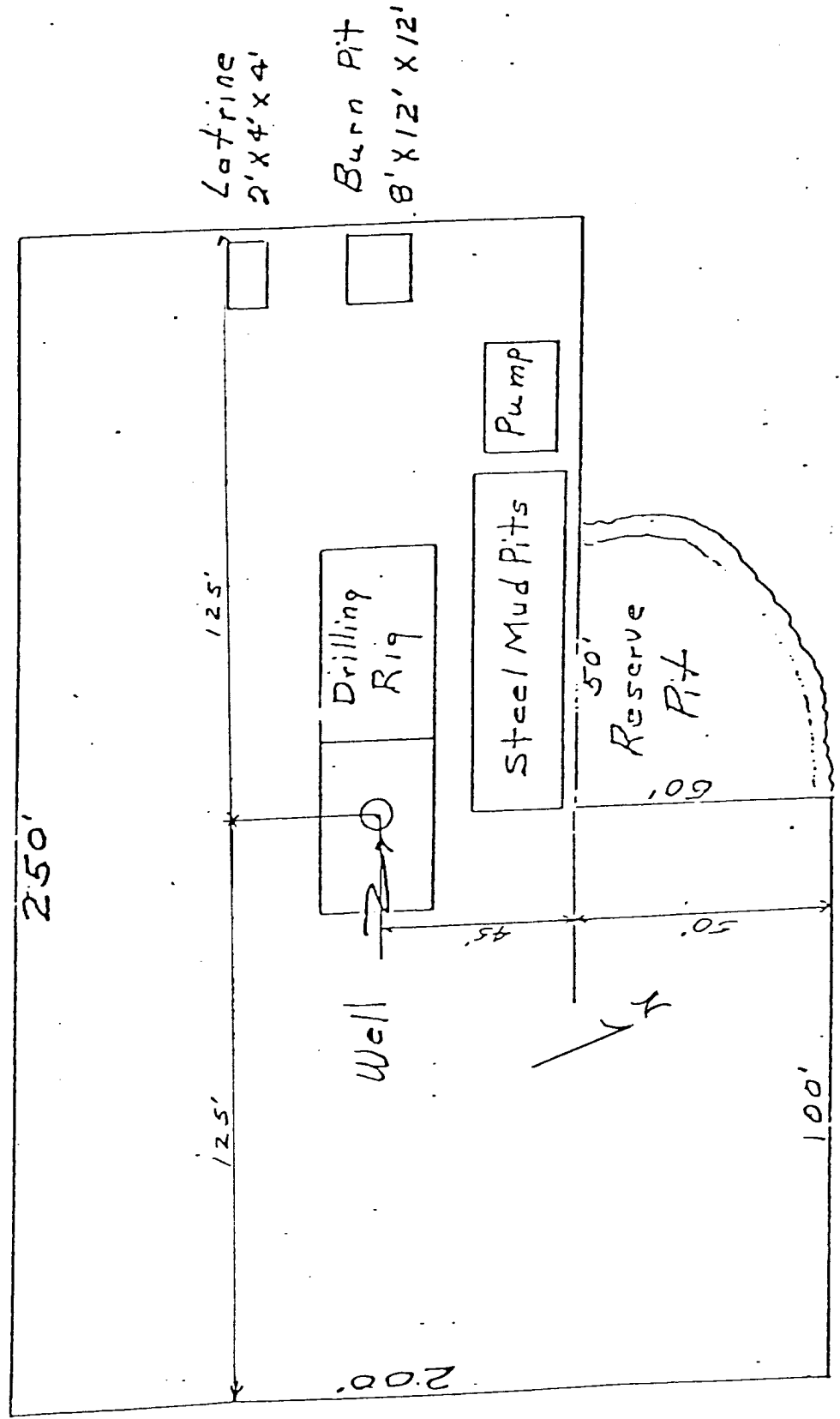
BLOWOUT PREVENTER HOCKUP

# LOCATION AND EQUIPMENT LAYOUT

SUPRON ENERGY CORPORATION

CONGRESS NO. 10

965 Ft./S; 1790 Ft./W line  
Sec, 35, T-29N, R-11W  
San Juan County, New Mexico



SUPRON ENERGY CORPORATION  
Post Office Box 808  
FARMINGTON, NEW MEXICO 87401

I hereby certify that I, or persons under my direct supervision, have inspected the proposed drillsite and access route; that I am familiar with the conditions which presently exist; that the statements made in this plan are, to the best of my knowledge, true and correct; and, that the work associated with the operations proposed herein will be performed by SUPRON ENERGY CORPORATION and its contractors subcontractors in conformity with this plan and the terms and conditions under which it is approved.

SUPRON ENERGY CORPORATION



Rudy D. Motto  
Area Superintendent  
Phone: 325-3587

SUPRON ENERGY CORPORATION

CONGRESS NO. 10

SW/4, Sec. 35, T-29N, R-11W, N.M.P.M.  
San Juan County, New Mexico

1. The Geologic name of the surface formation is "Wasatch".
2. The estimated tops of important Geologic markers are:
  - A. Top of the Ojo Alamo - - - - - 610 Ft.
  - B. Top of Kirtland - - - - - 931 Ft.
  - C. Top of the Fruitland - - - - - 1650 Ft.
  - D. Top of the Pictured Cliffs - - - - - 1832 Ft.
  - E. Top of the Chacra - - - - - 2820 Ft.
3. The estimated depth at which anticipated water, oil or other mineral bearing formations are expected to be encountered are:
  - A. Top of the Ojo Alamo - - - - - 610 Ft. - - - Water
  - B. Top of Kirtland - - - - - 931 Ft. - - - Water
  - C. Top of Fruitland - - - - - 1650 Ft. - - - Water
  - D. Top of the Pictured Cliffs - - - - - 1832 Ft. - - - Gas
  - E. Top of the Chacra - - - - - 2820 Ft. - - - Gas
4. The casing program is shown on 9-331C and all casing is new.
5. The lessee's pressure control equipment schematics are attached along with minimum specifications, testing procedures and frequencies.
6. The type, estimated volumes and characteristics of the circulating medium are as follows:
  - A. 0 to 200 feet Natural mud
  - B. 200 to 3030 feet Permaloid non-dispersed mud containing approximately 67 sx. of Permaloid and 10 sx. of C.M.C.
7. The auxiliary equipment will be floats at the bit and a sub on the floor with a full opening valve to be stabbed into the drill pipe when the kelly is not in the string.
8. This well is in an area which is heavily developed; therefore we will not have a testing or coring program. The logging program is as follows:
  - A. E.S. Induction
  - B. Gamma Ray Density
  - C. Gamma Ray Correlation
  - D. Cement Bond or Temperature
9. We do not expect to find any abnormal pressures temperatures or hydrogen sulfide problems in this heavily developed area.
10. The anticipated starting date for this well is February 1, 1981.



