

Form 2-211C
(May 1963)UNITED STATES
DEPARTMENT OF THE INTERIOR
GEOLOGICAL SURVEY

STUDIES IN TRIPLICATE*

Form approved,
Budget Bureau No. 42 R1425.

APPLICATION FOR PERMIT TO DRILL, DEEPEN, OR PLUG BACK

1a. TYPE OF WORK

DRILL ☒DEEPEN ☐OIL CON. PLUG BACK ☐DIST. 3 PLUG BACK ☐

b. TYPE OF WELL

OIL
WELL ☐GAS
WELL ☒

OTHER

SINGLE
ZONE ☐MULTIPLE
ZONE ☒

2. NAME OF OPERATOR

Pioneer Production Corp.

3. ADDRESS OF OPERATOR

P O Box 208, Farmington, NM 87401

4. LOCATION OF WELL (Report location clearly and in accordance with any State requirements.)*

At surface

1850' FSL - 1520' FEL

At proposed prod. zone

14. DISTANCE IN MILES AND DIRECTION FROM NEAREST TOWN OR POST OFFICE*

3 miles east of Farmington, NM

15. DISTANCE FROM PROPOSED LOCATION TO NEAREST PROPERTY OR LEASE LINE, FT.

(Also to nearest drlg. unit line, if any)

1520'

16. NO. OF ACRES IN LEASE

279.05

17. NO. OF ACRES ASSIGNED TO THIS WELL

DK 317.98 and Chacra 160

18. DISTANCE FROM PROPOSED LOCATION TO NEAREST WELL, DRILLING, COMPLETED, OR APPLIED FOR, ON THIS LEASE, FT.

1600'

19. PROPOSED DEPTH

6250'

20. ROTARY OR CABLE TOOLS

Rotary

21. ELEVATIONS (Show whether DF, RT, GR, etc.)

5484' GL

22. APPROX. DATE WORK WILL START*

Well already drilled.*

23. PROPOSED CASING AND CEMENTING PROGRAM

This action is subject to administrative appeal pursuant to 30 CFR 290.

SIZE OF HOLE	SIZE OF CASING	WEIGHT PER FOOT	SETTING DEPTH	
12-1/4"	8-5/8"	24#	350'	220 sx class B to surface
7-7/8"	4-1/2"	10.5#	6250'	850 sx cement in 2 stages

*Originally filed as a Fee Lease in error. Well has been completed, with all reports filed with and approved by NM Oil Conservation Division, Aztec, NM. See attached letter.

Planned to drill w/ mud to test the Basin Dakota and Chacra Formations. Planned to run IES log to TD, If productive, plan to set 4 1/2" csg., cement in two stages, and complete well.

Planned to use BOP furnished by rig while drilling (10" 3000 psi hydraulic).

Planned to use BOP rental while completing (6" 3000 psi double gate manual).

Gas dedicated.

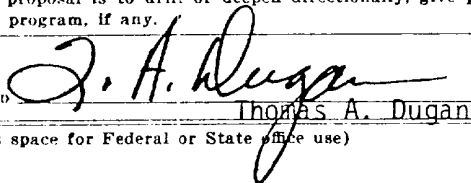
Permission received to dually complete this well 5-21-81, NMOCD Order #MC-2844.

Permission received to downhole commingle DK and Chacra production 4-14-81, Order #R=6653.

IN ABOVE SPACE DESCRIBE PROPOSED PROGRAM: If proposal is to deepen or plug back, give data on present productive zone and proposed new productive zone. If proposal is to drill or deepen directionally, give pertinent data on subsurface locations and measured and true vertical depths. Give blowout preventer program, if any.

24.

SIGNED



TITLE

Agent

DATE

8-3-81

(This space for Federal or State office use)

PERMIT NO.

APPROVAL DATE

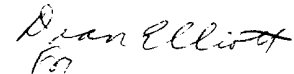
APPROVED BY

TITLE

DATE

CONDITIONS OF APPROVAL, IF ANY:

*See Instructions On Reverse Side
NMOCC



All distances must be from the outer boundaries of the Section.

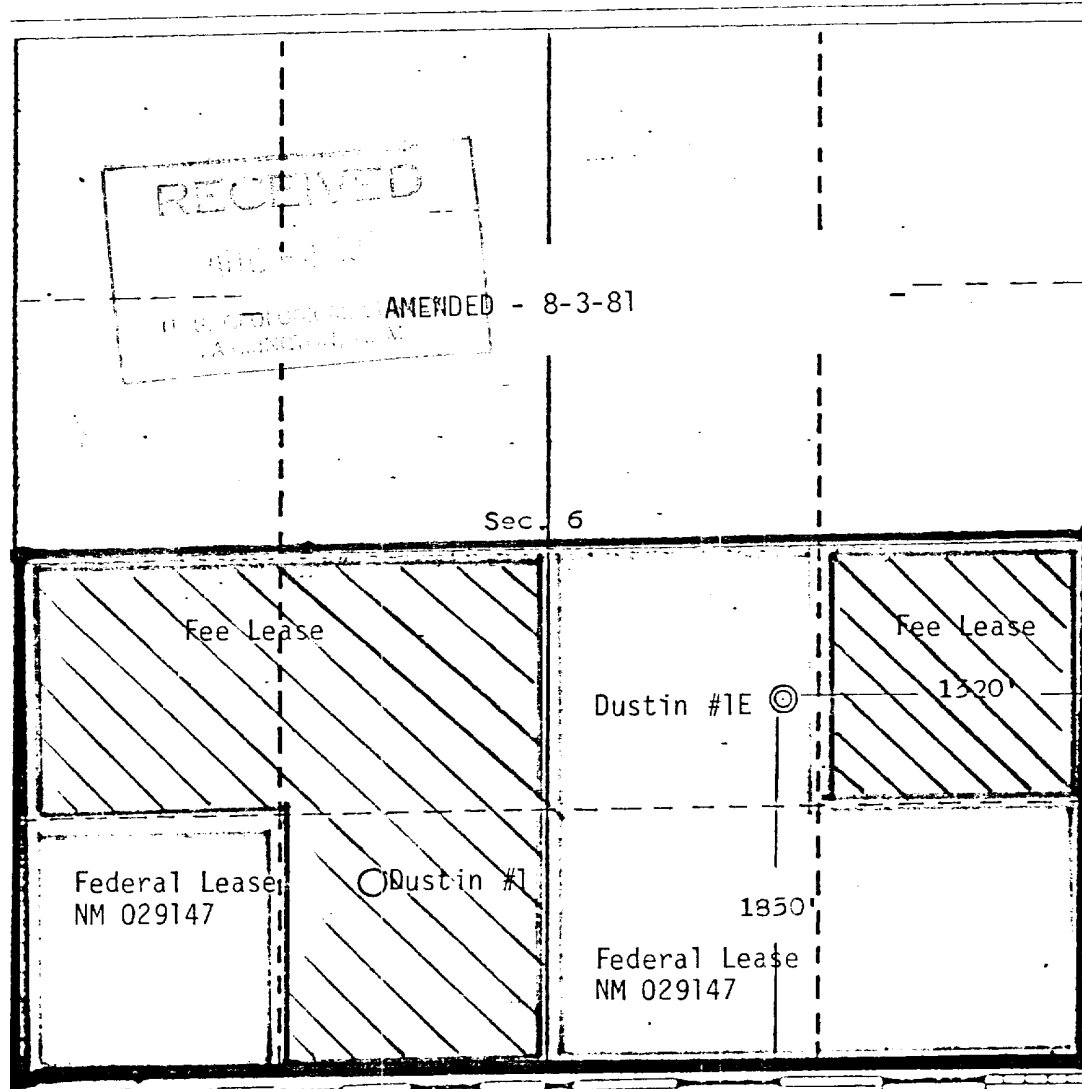
Operator Pioneer Production Corporation		Lease Dustin		Well No. 1E	
Unit Letter J	Section 5	Township 29 North	Range 12 West	County San Juan	
Actual Footage Location of Well:					
1850 feet from the South line and		1520 feet from the East line			
Ground Level Elev. 5484	Producing Formation Dakota	Pool Basin Dakota / Chacra		Dedicated Acreage: 317.98 / 160 Acres	

1. Outline the acreage dedicated to the subject well by colored pencil or hatchure marks on the plat below.
2. If more than one lease is dedicated to the well, outline each and identify the ownership thereof (both as to working interest and royalty).
3. If more than one lease of different ownership is dedicated to the well, have the interests of all owners been consolidated by communitization, unitization, force-pooling, etc?

☒ Yes ☐ No If answer is "yes," type of consolidation communitization

If answer is "no," list the owners and tract descriptions which have actually been consolidated. (Use reverse side of this form if necessary.)

No allowable will be assigned to the well until all interests have been consolidated (by communitization, unitization, forced-pooling, or otherwise) or until a non-standard unit, eliminating such interests, has been approved by the Division.



CERTIFICATION

I hereby certify that the information contained herein is true and complete to the best of my knowledge and belief.

Thomas A. Dugan
Name

Thomas A. Dugan
Position
Agent for Pioneer P. C.

Company
Dugan Production

Date
1-9-81

I hereby certify that the well location shown on this plat was placed in the field notes of actual surveys made by me or under my supervision, and that the same is true and correct to the best of my knowledge and belief.

Date Surveyed
December 30, 1980

Registered Professional Engineer
and/or Land Surveyor

Edgar L. Risenhoover
Certificate No. 5979



United States Department of the Interior

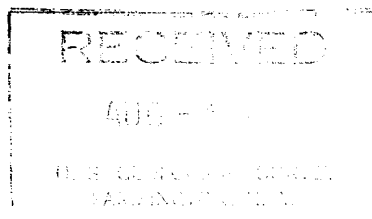
GEOLOGICAL SURVEY

Drawer 600
Farmington, New Mexico 87401

July 29, 1981

CERTIFIED MAIL
RETURN RECEIPT REQUESTED

Pioneer Production Corporation
P.O. Box 208
Farmington, New Mexico 87401



Gentlemen:

It has come to our attention that you completed on February 21, 1981, the No. 1E Dustin well in the NW $\frac{1}{4}$ SE $\frac{1}{4}$, sec. 6, T. 29N., R. 12W., on Federal oil and gas lease New Mexico 029147. The well potentialized for 702 MCF of gas per day from the Dakota and 495 MCF of gas from the Chacra.

The Dakota formation in this well is subject to communitization agreement 14-08-0001-7766, which covers the S $\frac{1}{2}$ of sec. 6, T. 29N., R. 12W. The Chacra formation is not communitized.

The drilling and operation of this well has not been approved by the U. S. Geological Survey. Therefore, you are hereby assessed twenty-five dollars (\$25.00) liquidated damages for failure to file and obtain approval to drill pursuant to 30CFR 221.54.

You are also ordered to shut down operation of the above described well until such time as you obtain approval for this well from the U.S. Geological Survey in compliance with sec. 12 of the communitization agreement and 30CFR 221.58.

You are further advised that the Chacra formation will require communitization of the SE $\frac{1}{4}$ of the same section 6.

Sincerely yours,

James A. Gillham
for James F. Sims
District Oil and Gas Supervisor
Alan Elliott

DEVELOPMENT PLAN
Pioneer Production Corp.

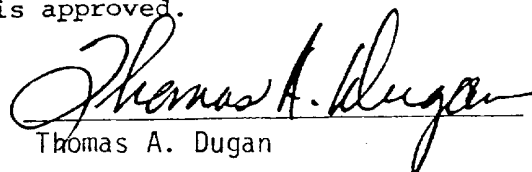
Dustin #1E

1. Existing roads and existing wells are shown on attached plat.
2. Planned access from existing road approximately 1000' to new location. Will leave natural grass and small vegetation on roadway. Will remove large brush or trees from road. Do not plan to make road grade or bar ditches. Will bottom-out any arroyo we cross and not install culverts.
3. Location of well: 1850' FSL - 1520' FEL
Sec 6 T29N R12W
San Juan County, NM
4. No additional well(s) planned on this lease at this time.
5. Separator and flow line will be located within 50' of wellhead.
6. Water will be secured from San Juan River.
7. Waste materials will be buried on location or in reserve pit.
8. No permanent camp is planned; trailer house will be used on location while drilling.
9. Do not plan to build airstrip.
10. See attached plat for proposed location layout.
11. A general description of the topography, soil characteristics, geologic features, flora and fauna; other surface-use activities and surface ownership of involved lands, proximity of water, occupied dwellings, archeological, historical or cultural sites can be found in the archeologist's report.
12. Geologic name of surface formation: undifferentiated tertiary
13. Estimated tops of important geologic markers:

See Operations Plan.
14. Estimated depths of anticipated water, oil, gas, or other mineral bearing formations which are expected to be encountered: gas 1631, 5975 & oil 5140
15. We do not anticipate to encounter any abnormal pressures or temperatures or any potential hazards such as those associated with hydrogen sulfide.
16. Will clean up location, fill and level pits, level ruts in road, reseed location and road with Seed Mixture #2 and paint equipment with sandstone brown.
17. Operator's Representative:
Thomas A. Dugan
Box 208
Farmington, NM 87401
18. Certification: The following statement must be signed by the lessee's or operator's field representative who is identified in Item #17 of the Plan:

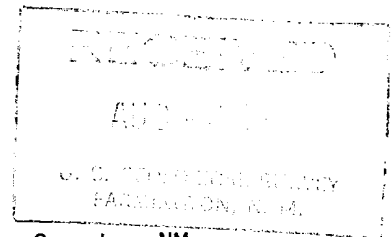
I hereby certify that I, or persons under my direct supervision, have inspected the proposed drillsite and access route; that I am familiar with the conditions which presently exist; that the statements made in this plan are, to the best of my knowledge, true and correct; and, that the work associated with the operations proposed herein will be performed by Pioneer Production Corp. and its contractors and subcontractors in conformity with this Plan and the terms and conditions under which it is approved.

Date: 8-3-81


Thomas A. Dugan

OPERATIONS PLAN

OPERATOR: PIONEER PRODUCTION
WELL NAME: Dustin #1E
FIELD: Basin Dakota & Undesignated Chacra
LOCATION: 1850' FSL - 1520' FEL, Sec 6 T29N R12W, San Juan County, NM
ELEVATION: 5484' G.L.



EXPECTED FORMATION TOPS:	Ojo Alamo	Surface	Point Lookout	4140'
	Kirtland	350'	Mancos	4213'
	Fruitland	890'	Gallup	5140'
	Pictured Cliffs	1471'	Greenhorn	5891'
	Lewis	1631'	Graneros	5931'
	Cliff House	3040'	Dakota	5975'
	Menefee	3190'	Total Depth	6250'

LOGGING PROGRAM: I.E.S. & C.D.N.

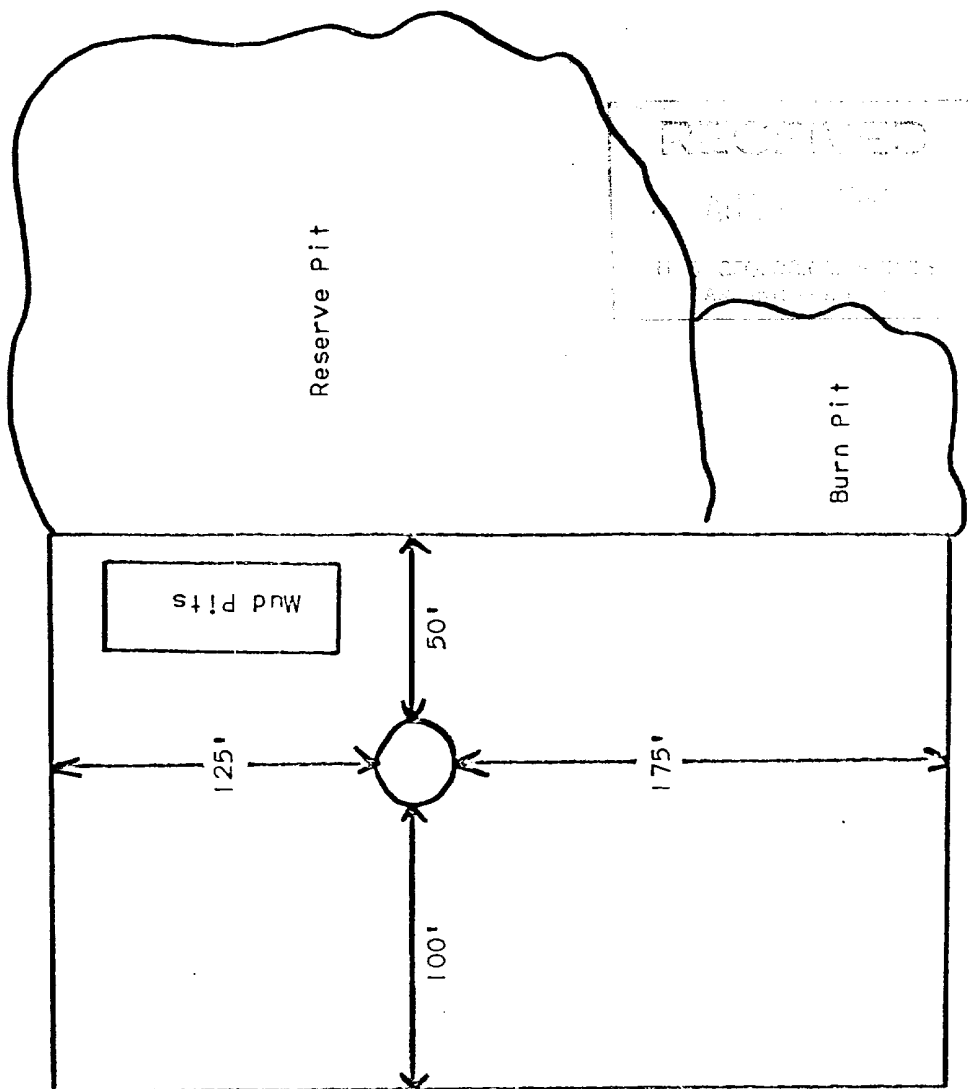
SAMPLES: Begin taking samples 5850' in 10' intervals thru T.D.

CASING PROGRAM

Hole Size	Depth	Csg Size, Wt, Grade, & Condition				Cementing Program
12-1/4"	350'	8-5/8"	24#	J-55	New	Cement to surface w/ 220 sx of class B cement
7-7/8"	6250'	4-1/2"	10.5#	J-55	New	Cement casing in two stages w/ 850 sx cement

WELLHEAD EQUIPMENT

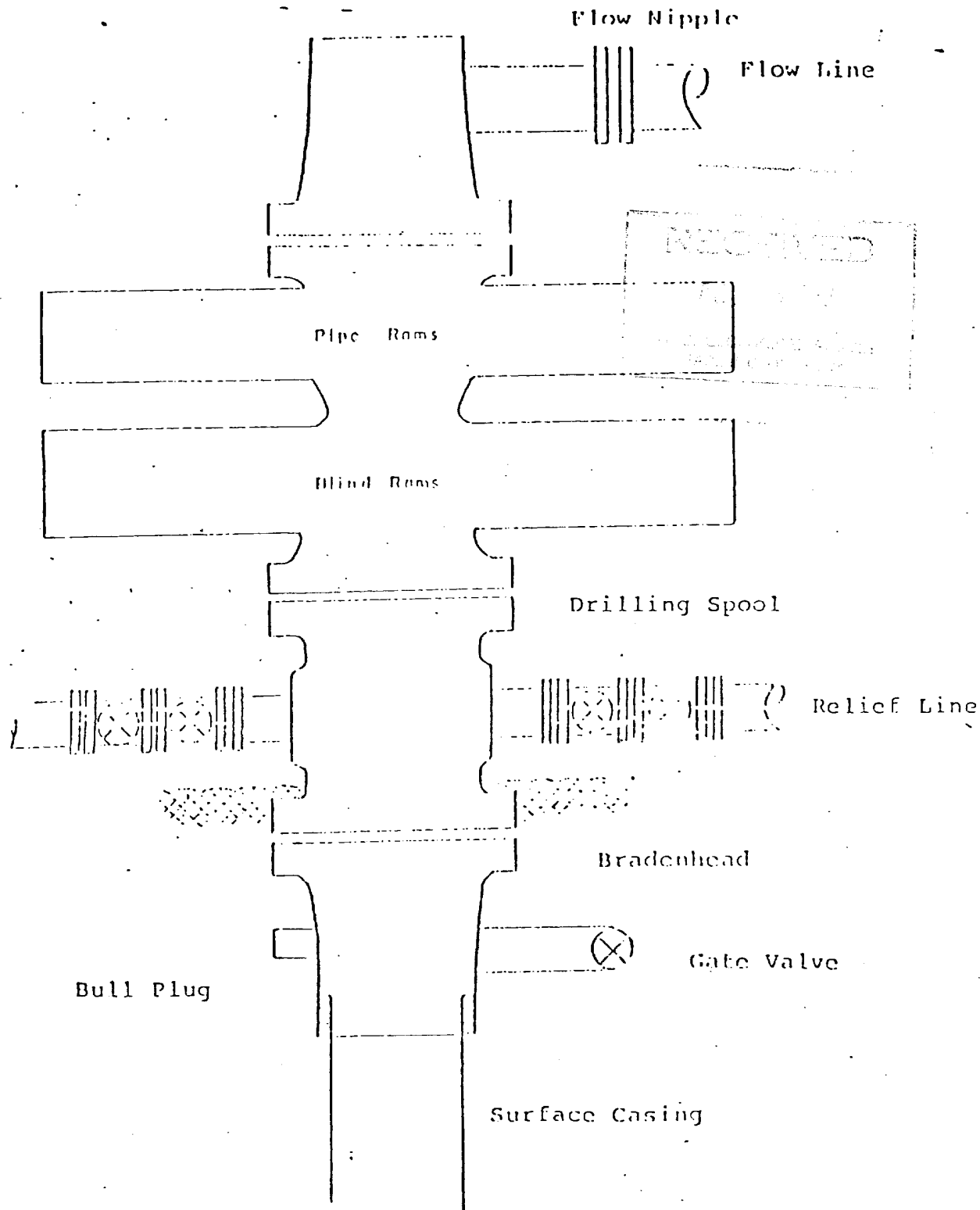
Office	-	325-0238 -1821
Tom Dugan		325-5694
Jim Jacobs		325-8353
Sherman Dugan		327-4287
Bill Donovan		325-5692
James Hazen		
Jerome McHugh Jr.		325-6978



PIONEER PRODUCTION CORP.
Dustin #1E

TYPICAL BOP INSTALLATION

FOR DAKOTA WELL



Series 900 Double Gate BOP, rated
at 3000 psi Working Pressure

When gas drilling operations begin a Shaffer type
50 or equivalent rotating head is installed on top of
the flow nipple and the flow line is converted into
a blowie line.

PIONEER PRODUCTION CORP.
Dustin #12

