

UNITED STATES
DEPARTMENT OF THE INTERIOR
GEOLOGICAL SURVEY

APPLICATION FOR PERMIT TO DRILL, DEEPEN, OR PLUG BACK

1a. TYPE OF WORK

DRILL ☒DEEPEN ☐PLUG BACK ☐

b. TYPE OF WELL

OIL
WELL ☐GAS
WELL ☒OTHER ☐SINGLE
ZONE ☐MULTIPLE
ZONE ☒

2. NAME OF OPERATOR

SUPRON ENERGY CORPORATION

3. ADDRESS OF OPERATOR

P.O. Box 808, Farmington, New Mexico 87401

4. LOCATION OF WELL (Report location clearly and in accordance with any State requirements.)

At surface

1120 feet from the South and 825 feet from the East lines

At proposed prod. zone

Same as above

14. DISTANCE IN MILES AND DIRECTION FROM NEAREST TOWN OR POST OFFICE*

2 1/2 miles southeast of Bloomfield New Mexico

15. DISTANCE FROM PROPOSED*

LOCATION TO NEAREST
PROPERTY OR LEASE LINE, FT.

(Also to nearest drlg. unit line, if any)

825 ft.

825 ft.

16. NO. OF ACRES IN LEASE

400.28

18. DISTANCE FROM PROPOSED LOCATION*

TO NEAREST WELL DRILLING COMPLETED,
OR APPLIED FOR, ON THIS LEASE, FT.

220 ft.

19. PROPOSED DEPTH

6525 ft.

21. ELEVATIONS (Show whether DE, RT, GR, etc.)

5678 Gr.

23

PROPOSED CASING AND CEMENTING PROGRAM

SIZE OF HOLE	SIZE OF CASING	WEIGHT PER FOOT	SETTING DEPTH	QUANTITY OF CEMENT
12-1/4"	3-5/8"	24.00	250 ft.	150 sx circulated
7-7/8"	4-1/2"	10.50	6525 ft.	950 sx cover the Ojo Alamo

We desire to drill 12 1/4" surface hole, using natural mud, to approx. 250 ft. Run new 8-5/8" 24.00# csg. Cement surface csg. in place. Circulate cement to the surface. Drill out w/7-7/8" ibt using mud as a circulating medium to T.D. of approx. 6525 ft. Log well. Run new 4 1/2" 10.50# csg. to T.D. w/D.V. tools at approx. 4400 ft. & @ approx. 3010 ft. Cement 1st stage w/approx. 300 sx of 50-50 POZ. Cement 2nd stage w/approx. 200 sx of 50-50 POZ followed by 50 sx of class "B". Cement 3rd stage w/approx. 325 sx of 65-35 followed by approx. 75 sx of class "B" cement. Drill D.V. tools out. Pressure test csg. Perforate and fracture the Dakota zone. Set a bridge plug. Perforate and fracture the Chacra zone. Clean Chacra zone up. Pull bridge plug. Clean Dakota zone up. Run tbq. w/ a production packer and set above the Dakota zone. Test the production packer for leakage. Test Dakota zone. Test Chacra zone after nipping down well head. Connect to a gathering system.

This gas was previously dedicated to a transporter.

IN ABOVE SPACE DESCRIBE PROPOSED PROGRAM: If proposal is to deepen or plug back, give data on present productive zone and proposed new productive zone. If proposal is to drill or deepen directionally, give pertinent data on subsurface locations and measured and true vertical depths. Give blowout preventer program, if any.

24.

APPROVED

AS AMENDED

TITLE Area Superintendent

DATE January 9, 1981

SIGNED Rudy D. Kottler

(This space for Federal or State office use)

PERMIT NO.

APPROVAL DATE

DATE

APPROVED BY

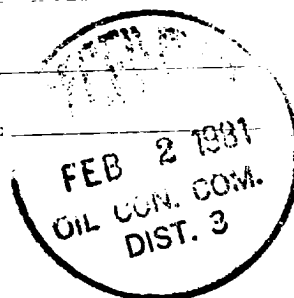
CONDITIONS OF APPROVAL, IF ANY:

JAN 9 1981

JAMES F. SIMS

DISTRICT ENGINEER

TITLE



**NEW MEXICO OIL CONSERVATION COMMISSION
WELL LOCATION AND ACREAGE DEDICATION PLAT**

Form C-102
Supersedes C-128
Effective 1-1-65

All distances must be from the outer boundaries of the Section.

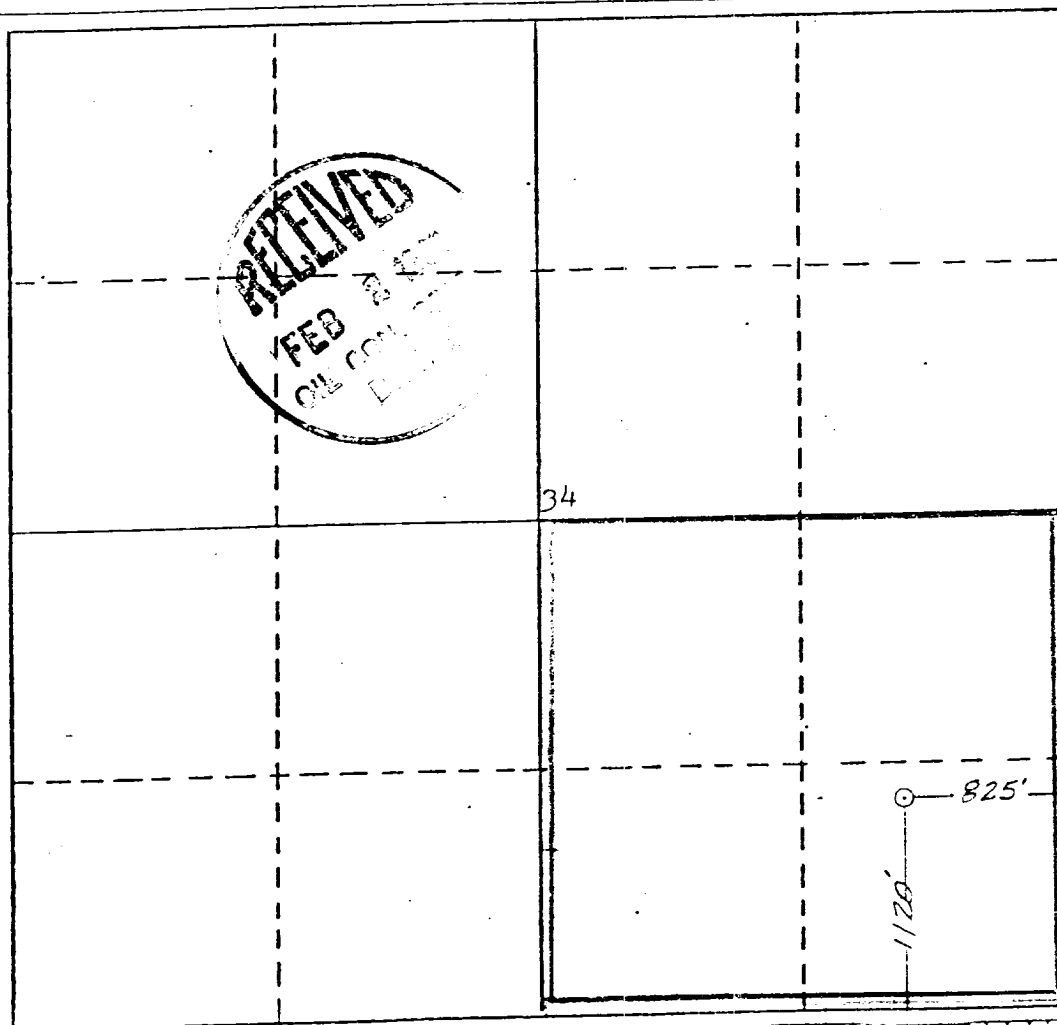
Operator SUPRON ENERGY CORPORATION			Lease CONGRESS		Well No. 5-E
Unit Letter P	Section 34	Township 29 NORTH	Range 11 WEST	County SAN JUAN	
Actual Footage Location of Well:					
1120 feet from the SOUTH line and		825 feet from the EAST line			
Ground Level Elev. 5678	Producing Formation Chacra Dakota	Pool Bloomfield Extension Basin	Dedicated Acreage: SE 1/4 160.00 E 1/4 321.80 Acres		

1. Outline the acreage dedicated to the subject well by colored pencil or hachure marks on the plat below.
2. If more than one lease is dedicated to the well, outline each and identify the ownership thereof (both as to working interest and royalty).
3. If more than one lease of different ownership is dedicated to the well, have the interests of all owners been consolidated by communitization, unitization, force-pooling, etc?

☐ Yes ☐ No If answer is "yes," type of consolidation _____

If answer is "no," list the owners and tract descriptions which have actually been consolidated. (Use reverse side of this form if necessary.) _____

No allowable will be assigned to the well until all interests have been consolidated (by communitization, unitization, forced-pooling, or otherwise) or until a non-standard unit, eliminating such interests, has been approved by the Commission.



CERTIFICATION

I hereby certify that the information contained herein is true and complete to the best of my knowledge and belief.

Name
Rudy D. Motto
Position
Area Superintendent
Company
SUPRON ENERGY CORPORATION
Date
October 10, 1980

I hereby certify that the well location shown on this plat was plotted from field notes of actual surveys made by me or under my supervision, and that the same is true and correct to the best of my knowledge and belief.

Date Surveyed
September 30, 1980
Registered Professional Engineer and/or Land Surveyor
James P. Leese

Certificate No.

1463