

UNITED STATES  
DEPARTMENT OF THE INTERIOR  
BUREAU OF LAND MANAGEMENT

APPLICATION FOR PERMIT TO DRILL, DEEPEN, OR PLUG BACK

1a. TYPE OF WORK  
DRILL ☒ DEEPEN ☐ PLUG BACK ☐

b. TYPE OF WELL  
OIL WELL ☐ GAS WELL ☒ OTHER ☐  
SINGLE ZONE ☒ MULTIPLE ZONE ☐

2. NAME OF OPERATOR  
Phillips Petroleum Company

3. ADDRESS OF OPERATOR  
300 W. Arrington, Suite 200, Farmington, N.M. 87401

4. LOCATION OF WELL (Report location clearly and in accordance with any State requirements.)  
At surface Unit L, 1337' FSL & 1141' FWL

At proposed prod. zone Unit L, 1337' FSL & 1141' FWL

14. DISTANCE IN MILES AND DIRECTION FROM NEAREST TOWN OR POST OFFICE\*

10. DISTANCE FROM PROPOSED\*  
LOCATION TO NEAREST  
PROPERTY OR LEASE LINE, FT.  
(Also to nearest drig. unit line, if any) 1141' FWL

18. DISTANCE FROM PROPOSED LOCATION\*  
TO NEAREST WELL, DRILLING, COMPLETED,  
OR APPLIED FOR, ON THIS LEASE, FT. 285' from #75

21. ELEVATIONS (Show whether DF, RT, GR, etc.) This action is subject to technical and  
procedural review pursuant to 43 CFR 3165.3  
6533' (GL Unprepared)

22. APPROX. DATE WORK WILL START\*  
Upon Approval

SIZE OF HOLE	SIZE OF CASING	WEIGHT PER FOOT	SETTING DEPTH
12-1/4"	9-5/8"	36#, K-55	250'
8-3/4"	7"	23#, K-55	3197'
6-1/8"	5-1/2"	15.5# or 23#	3097'-3375'

5. LEASE DESIGNATION AND SERIAL NO.  
SF-078739

6. IF INDIAN, ALLOTTEE OR TRIBE NAME

7. UNIT AGREEMENT NAME  
San Juan 30-5 Unit

8. FARM OR LEASE NAME

9. WELL NO.  
217

10. FIELD AND POOL, OR WILDCAT  
Basin Fruitland Coal Gas

11. SEC., T., R., M., OR BLK.  
AND SURVEY OR AREA  
L  
Sec. 21, T-30-N, R-5 -W

12. COUNTY OR PARISH  
Rio Arriba

13. STATE  
NM

17. NO. OF ACRES ASSIGNED  
TO THIS WELL  
320 Ac W/2 of Section

20. ROTARY OR CABLE TOOLS  
Rotary

22. APPROX. DATE WORK WILL START\*  
Upon Approval

DRILLING OPERATIONS AUTHORIZED ARE  
SUBJECT TO COMPLIANCE WITH ATTACHED  
"GENERAL REQUIREMENTS"

250' sxs, Circ to Surface  
650' sxs, Circ to Surface  
\*

\*If the coal is cleated a 5-1/2", 23#, P-110 liner will be run in the open hole without being cemented.

\*If the coal is not cleated the well will be stimulated and a 5-1/2", 15.5#, J-55 liner will be run without being cemented.

RECEIVED  
JUL 23 1990  
OIL CON. DIV  
DIST. 3

Mud Program and BOP Equipment: See Attached

IN ABOVE SPACE DESCRIBE PROPOSED PROGRAM: If proposal is to deepen or plug back, give data on present productive zone and proposed new productive zone. If proposal is to drill or deepen directionally, give pertinent data on subsurface locations and measured and true vertical depths. Give blowout preventer program, if any.

24. SIGNED L.M. Sanders TITLE Supv. Regulatory Affairs DATE 4/1/90

(This space for Federal or State office use)

PERMIT NO. APPROVAL DATE

APPROVED BY TITLE

CONDITIONS OF APPROVAL, IF ANY:

APPROVED  
AS AMEN

APR 18 1990  
AREA MANAGER

Submit to Appropriate  
District Office  
State Lease - 4 copies  
Fee Lease - 3 copies

State of New Mexico  
Energy, Minerals and Natural Resources Department

Form C-102  
Revised 1-1-89

OIL CONSERVATION DIVISION

P.O. Box 2088  
Santa Fe, New Mexico 87504-2088

DISTRICT I  
P.O. Box 1980, Hobbs, NM 88240

DISTRICT II  
P.O. Drawer DD, Artesia, NM 88210

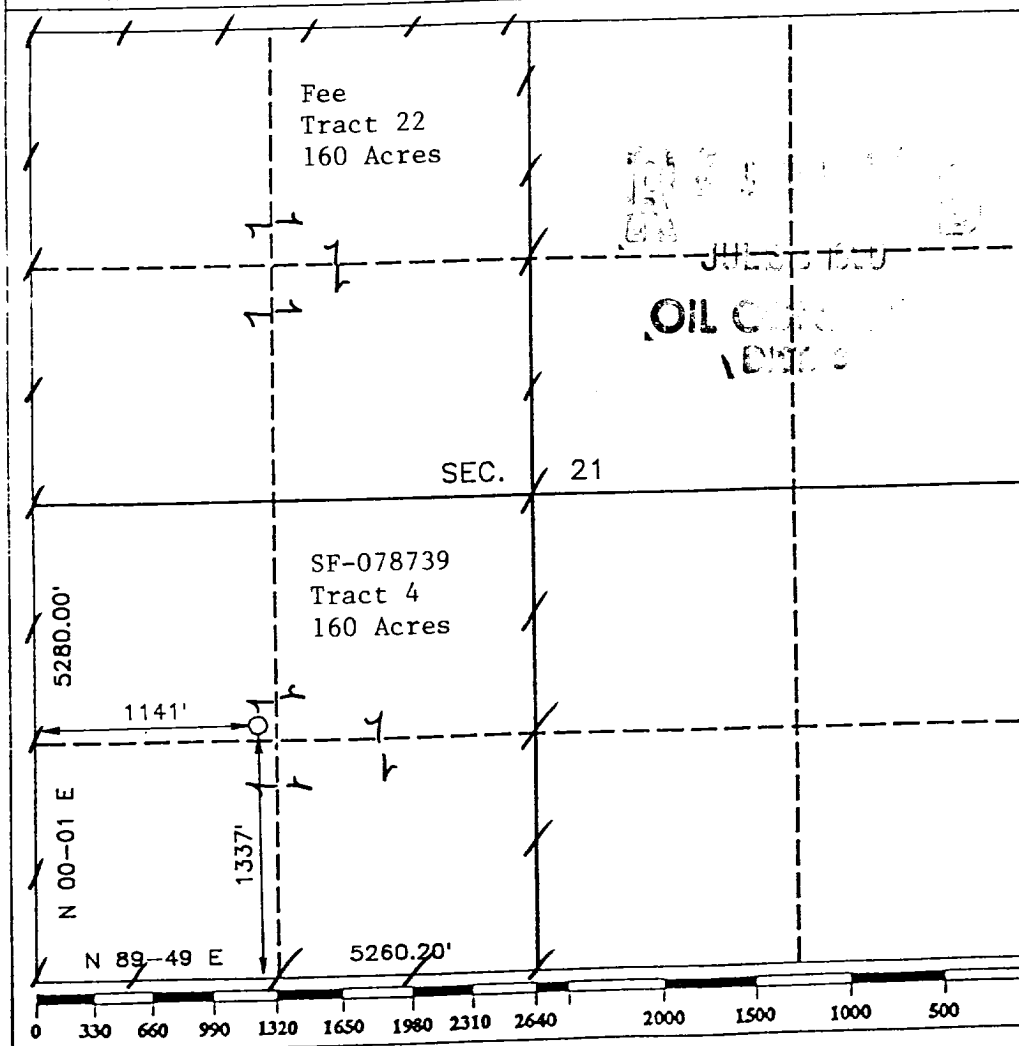
DISTRICT III  
1000 Rio Brazos Rd., Aztec, NM 87410

WELL LOCATION AND ACREAGE DEDICATION PLAT

All Distances must be from the outer boundaries of the section

Operator <b>PHILLIPS PETROLEUM</b>		Lease <b>SAN JUAN 30-5 UNIT</b>		Well No. <b>217</b>
Unit Letter <b>L</b>	Section <b>21</b>	Township <b>T.30 N.</b>	Range <b>R.5 W.</b>	County <b>RIO ARriba COUNTY</b>
Actual Footage Location of Well: <b>1337</b> feet from the <b>SOUTH</b> line and <b>1141</b> feet from the <b>WEST</b> line				
Ground level Elev. <b>6533</b>	Producing Formation <b>Fruitland</b>	Pool <b>Basin Fruitland Coal</b>		Dedicated Acreage: <b>320</b> Acres

- Outline the acreage dedicated to the subject well by colored pencil or hatchure marks on the plat below.
- If more than one lease is dedicated to the well, outline each and identify the ownership thereof (both as to working interest and royalty).
- If more than one lease of different ownership is dedicated to the well, have the interest of all owners been consolidated by communitization, unitization, force-pooling, etc.?  
☒ Yes ☐ No If answer is "yes" type of consolidation Unitization  
If answer is "no" list the owners and tract descriptions which have actually been consolidated. (Use reverse side of this form if necessary.)  
No allowable will be assigned to the well until all interests have been consolidated (by communitization, unitization, forced-pooling, or otherwise) or until a non-standard unit, eliminating such interest, has been approved by the Division.



OPERATOR CERTIFICATION

I hereby certify that the information contained herein is true and complete to the best of my knowledge and belief.

Signature  
*L. M. Sanders*  
Printed Name  
**L. M. Sanders**  
Position  
**Supv. Regulatory Affairs**  
Company  
**Phillips Petroleum Co.**  
Date  
**4/1/90**

SURVEYOR CERTIFICATION

I hereby certify that the well location shown on this plat was plotted from field notes of actual surveys made by me or under my supervision, and that the same is true and correct to the best of my knowledge and belief.

Date Surveyed  
**MAY 1990**  
Signature & Seal of  
Professional Surveyor  
**R. HOWARD DASGE**  
Certificate No.  
**9679**  
Registered Professional  
Land Surveyor

