

NO. OF COPIES RECEIVED		
DISTRIBUTION		
SANTA FE		
FILE		
U.S.G.S.		
LAND OFFICE		
OPERATOR		

NEW MEXICO OIL CONSERVATION COMMISSION

Form C-101
Revised 1-1-65

80-45-24552

5A. Indicate Type of Lease
STATE FEE

5. State Oil & Gas Lease No.
B 10405

APPLICATION FOR PERMIT TO DRILL, DEEPEN, OR PLUG BACK

1a. Type of Work
DRILL DEEPEN PLUG BACK

b. Type of Well
OIL WELL GAS WELL OTHER SINGLE ZONE MULTIPLE ZONE

2. Name of Operator
Amoco Production Company

3. Address of Operator
501 Airport Drive, Farmington, NM 87401

4. Location of Well
UNIT LETTER J LOCATED 1770 FEET FROM THE South LINE
AND 1810 FEET FROM THE East LINE OF SEC. 32 TWP. 29N RGE. 9W NMPM

7. Unit Agreement Name

8. Form or Lease Name
State Gas Com BT

9. Well No.
1

10. Field and Pool, or Wildcat
Aztec Undes. Pictured Cliffs/Chacra

12. County
San Juan

19. Proposed Depth
3400'

19A. Formation
Pictured Cliffs/Chacra

20. Rotary or C.T.
Rotary

21. Elevations (Show whether DF, RT, etc.)
6218' GL

21A. Kind & Status Plug. Bond
Statewide

21B. Drilling Contractor
Unknown

22. Approx. Date Work will start
as soon as permitted

PROPOSED CASING AND CEMENT PROGRAM

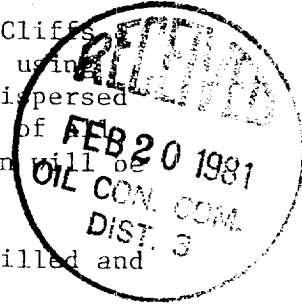
SIZE OF HOLE	SIZE OF CASING	WEIGHT PER FOOT	SETTING DEPTH	SACKS OF CEMENT	EST. TOP
12 1/4"	9 5/8"	36#	300'	100	surface
8 3/4"	7"	26#	3400'	350	surface

Amoco proposed to drill the above well to further develop the Pictured Cliffs Chacra reservoirs. The well will be drilled to the surface casing point using native mud. The well will then be drilled to TD with a low solids nondispersed mud system. Completion design will be based on open hole logs. Copies of logs will be filed upon completion. Amoco's standard blowout prevention will be employed; see attached drawing for blowout preventer design.

Upon completion the well location will be cleaned and the reserve pit filled and leveled.

Gas produced from this well is dedicated to El Paso Natural Gas Company, contract No. 33107 (Pictured Cliffs). The gas produced from the Chacra is not dedicated to a gas sales contract.

EXPIRES 8-20-81



IN ABOVE SPACE DESCRIBE PROPOSED PROGRAM; IF PROPOSAL IS TO DEEPEN OR PLUG BACK, GIVE DATA ON PRESENT PRODUCTIVE ZONE AND PROPOSED NEW PRODUCTIVE ZONE. GIVE BLOWOUT PREVENTER PROGRAM, IF ANY.

I hereby certify that the information above is true and complete to the best of my knowledge and belief.

Original signed By W. L. Peterson Title District Engineer Date 2-19-81

(This space for State Use)

APPROVED BY [Signature] TITLE SUPERVISOR DISTRICT # 3 DATE FEB 20 1981

CONDITIONS OF APPROVAL, IF ANY:

OIL CONSERVATION DIVISION

STATE OF NEW MEXICO
ENERGY AND MINERALS DEPARTMENT

P. O. BOX 2088

SANTA FE, NEW MEXICO 87501

Form C-107
Revised 10-1-78

All distances must be from the outer boundaries of the Section.

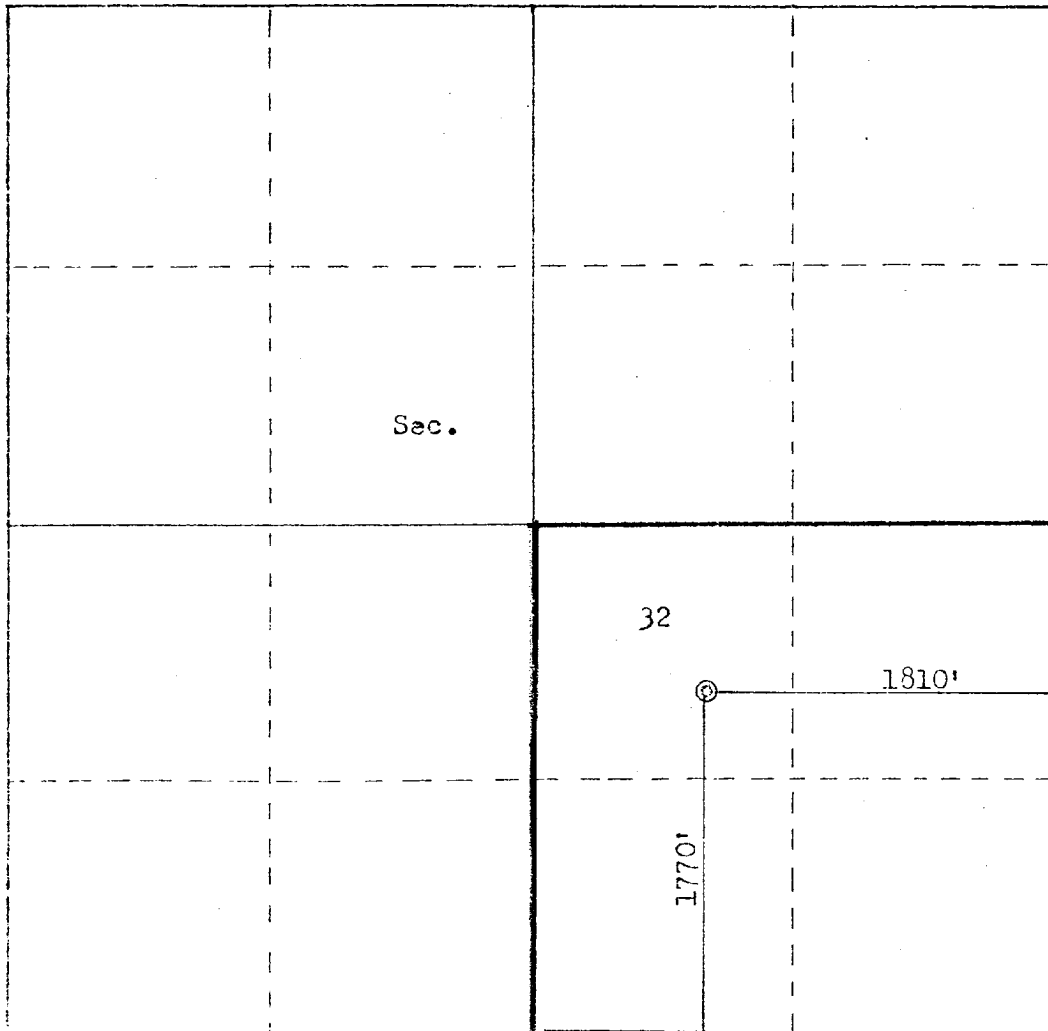
Operator AMOCO PRODUCTION COMPANY		Lease STATE GAS COM "BT"		Well No. 1
Unit Letter J	Section 32	Township 29N	Range 9W	County San Juan
Actual Footage Location of Well: 1770 feet from the South line and 1810 feet from the East line				
Ground Level Elev. 6218	Producing Formation Pictured Cliffs/ Chacra	Pool Aztec Pictured Cliffs/ Undesignated Chacra	Dedicated Acreage: 160 Acres	

1. Outline the acreage dedicated to the subject well by colored pencil or hachure marks on the plat below.
2. If more than one lease is dedicated to the well, outline each and identify the ownership thereof (both as to working interest and royalty).
3. If more than one lease of different ownership is dedicated to the well, have the interests of all owners been consolidated by communitization, unitization, force-pooling, etc?

Yes No If answer is "yes," type of consolidation Communitization

If answer is "no," list the owners and tract descriptions which have actually been consolidated. (Use reverse side of this form if necessary.) _____

No allowable will be assigned to the well until all interests have been consolidated (by communitization, unitization, forced-pooling, or otherwise) or until a non-standard unit, eliminating such interests, has been approved by the Commission.



Scale: 1"=1000'

CERTIFICATION

I hereby certify that the information contained herein is true and complete to the best of my knowledge and belief.

Wayne L Peterson

Name
W. L. PETERSON

Position
DISTRICT ENGINEER

Company
AMOCO PRODUCTION COMPANY

Date
2-17-81

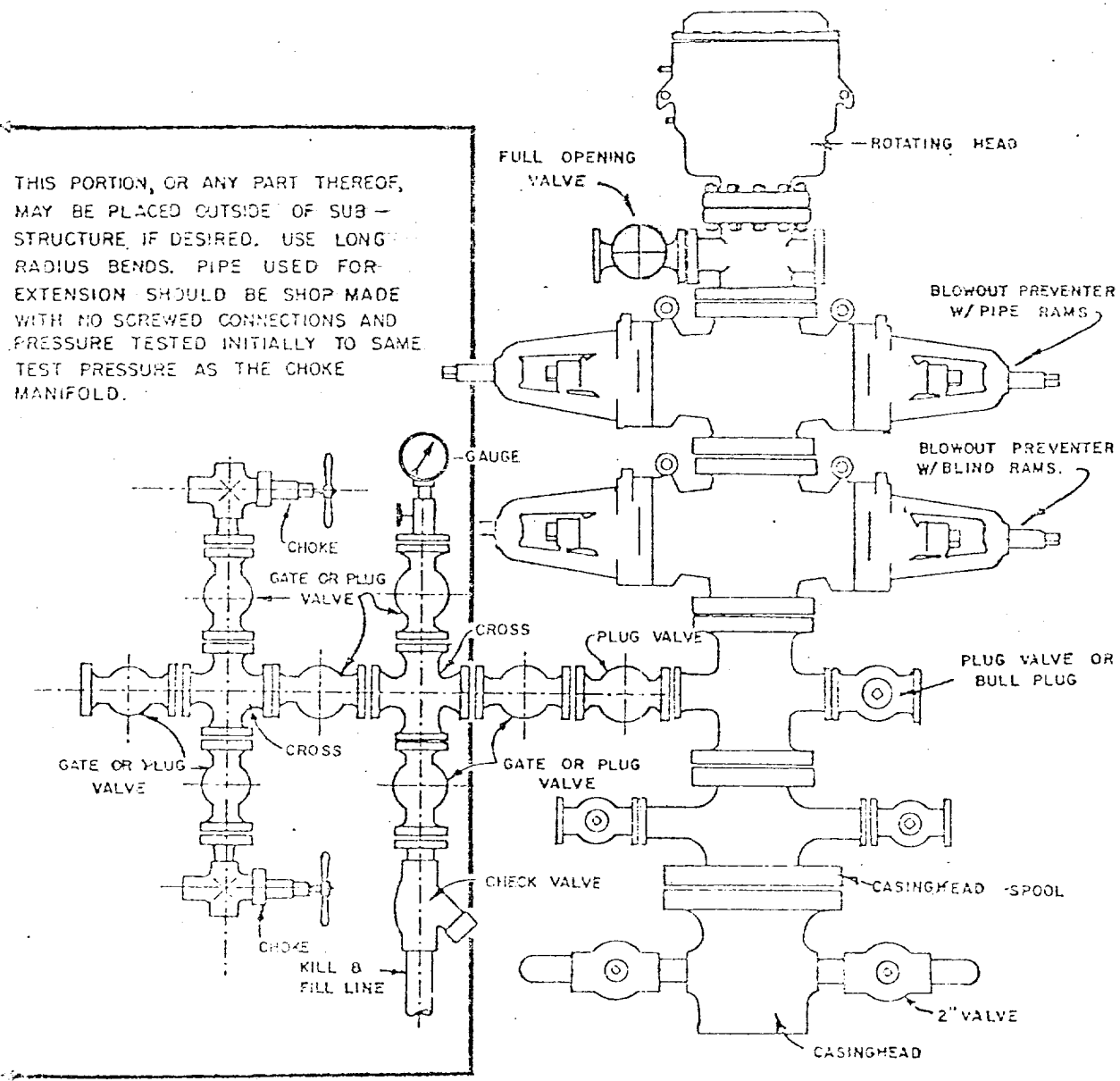
I hereby certify that the well location shown on this plat was plotted from field notes of actual surveys made by me or under my supervision, and that the same is true and correct to the best of my knowledge and belief.

Date Surveyed
February 13, 1981

Registered Professional Engineer and Land Surveyor
Fred B. Keir Jr.
Fred B. Keir Jr.

Certificate No.
3950

1. Blowout Preventers and Master Valve to be fluid operated, and all fittings must be in good condition.
2. Equipment through which bit must pass shall be as large as the inside diameter of the casing that is being drilled through.
3. Nipple above Blowout Preventer shall be same size or larger than BOP being drilled through.
4. All fittings to be flanged.
5. Omsco or comparable safety valve must be available on rig floor at all times with proper connection or sub. The I.D. of safety valve should be as great as I.D. of tool joints of drill pipe, or at least as great as I.D. of drill collars.



BLOWOUT PREVENTER HOOKUP

API Series # 900

EXHIBIT D-4

OCTOBER 16, 1959

Operation of BOP by closing both pipe and blind rams will be tested each trip or, on long bit runs, pipe rams will be closed once each 24 hours.