

UNITED STATES
DEPARTMENT OF THE INTERIOR
GEOLOGICAL SURVEY30-645-24884
5. LEASE DESIGNATION AND SERIAL NO.

NM-03561

6. IF INDIAN, ALLOTTEE OR TRIBE NAME

7. UNIT AGREEMENT NAME

8. FARM OR LEASE NAME

GRENIER "B"

9. WELL NO.

#3E

10. FIELD AND FOOT OR W.M.C.A.T.

Bianco Mesa Verde

Basin Dakota

11. SEC., T., R., M., OR BLK.

AND SURVEY OR AREA

Section 5, T29N, R10W

12. COUNTY OR PARISH

San Juan

13. STATE

NM

1A. TYPE OF WORK

DRILL ☒DEEPEN ☐PLUG BACK ☐

B. TYPE OF WELL

OIL
WELL ☐GAS
WELL ☒

OTHER

SINGLE
ZONE ☐MULTIPLE
ZONE ☒

2. NAME OF OPERATOR

Southland Royalty Company

3. ADDRESS OF OPERATOR

P. O. Drawer 570, Farmington, NM 87401

4. LOCATION OF WELL (Report location clearly and in accordance with any State requirements.)*

At surface

1530' FSL & 1530' FEL
At proposed prod. zone

14. DISTANCE IN MILES AND DIRECTION FROM NEAREST TOWN OR POST OFFICE*

Approximately 2 1/2 miles NE of Bloomfield, NM

15. DISTANCE FROM PROPOSED*

LOCATION TO NEAREST
PROPERTY OR LEASE LINE, FT.
(Also to nearest drg. unit line, if any)

1110'

16. NO. OF ACRES IN LEASE

915.29

18. DISTANCE FROM PROPOSED LOCATION*
TO NEAREST WELL, DRILLING, COMPLETED,
OR APPLIED FOR, ON THIS LEASE, FT.

2000'

19. PROPOSED DEPTH

6910'

17. NO. OF ACRES ASSIGNED
TO THIS WELL

3285/294.52 + 5/24452

20. ROTARY OR CABLE TOOLS

Rotary

21. ELEVATIONS (Show whether DF, RT, GR, etc.)

5847' GR

22. APPROX. DATE WORK WILL START*

May 21, 81

23. PROPOSED CASING AND CEMENTING PROGRAM

SIZE OF HOLE	SIZE OF CASING	WEIGHT PER FOOT	SETTING DEPTH	QUANTITY OF CEMENT
13 3/4"	10 3/4"	32.75#	200'	136 sx (160 cu.ft.)
7 7/8"	5 1/2"	15.5#	6910'	175 sx Stage One (245 cu.ft.)
				520 sx Stage Two (759 cu.ft.)
				475 sx Stage Three (692 cu.ft.)

This action is subject to administrative
appeal pursuant to 30 CFR 200.

Surface formation is Nacimiento.

Top of Ojo Alamo sand is at 1139'.

Top of Pictured Cliffs sand is at 2252'.

Fresh water mud will be used to drill from surface to total depth
It is anticipated that an IEL log will be run from total depth to surface casing and a
Gr-Density log will be run from total depth to 1700'.No abnormal pressures or poisonous gases are anticipated in this well.
It is expected that this well will be drilled before July 31, 1981. This depends on
time required for approval, rig availability and the weather.
Gas is dedicated.

IN ABOVE SPACE DESCRIBE PROPOSED PROGRAM: If proposal is to deepen or plug back, give data on present productive zone and proposed new productive zone. If proposal is to drill or deepen directionally, give pertinent data on subsurface locations and measured and true vertical depths. Give blowout preventer program, if any.

24.

SIGNED

R E Zelder

TITLE

District Engineer

DATE

1-20-81

(This space for Federal or State office use)

PERMIT NO.

APPROVED
AS AMENDED

APPROVAL DATE

APPROVED BY

CONDITIONS OF APPROVAL, IF ANY

TITLE

DATE

FEB 13 1981

JAMES F. SIMS

DISTRICT ENGINEER

at 3~

Write MV
Duk NW 4
3-212

OIL CONSERVATION DIVISION

P. O. BOX 2088

SANTA FE, NEW MEXICO 87501

Form C-107
Revised 10-1-78STATE OF NEW MEXICO
OIL AND GAS DEPARTMENT

All distances must be from the outer boundaries of the Section.

SOUTHLAND ROYALTY COMPANY			Lease GRENIER "B"		Well No. 3E
Letter J	Section 5	Township 29N	Range 10W	County San Juan	
Actual Footage Location of Well:					
1530 feet from the South		line and 1530 feet from the East		line	
Ground Level Elev: 5847	Producing Formation Mesa Verde/Dakota	Pool Blanco/Basin	Dedicated Acreage: 320 Acres		

1. Outline the acreage dedicated to the subject well by colored pencil or hachure marks on the plat below.

2. If more than one lease is dedicated to the well, outline each and identify the ownership thereof (both as to working interest and royalty).

3. If more than one lease of different ownership is dedicated to the well, have the interests of all owners been consolidated by communitization, unitization, force-pooling, etc?

☐ Yes ☐ No If answer is "yes," type of consolidation _____

If answer is "no," list the owners and tract descriptions which have actually been consolidated. (Use reverse side of this form if necessary.) _____

No allowable will be assigned to the well until all interests have been consolidated (by communitization, unitization, forced-pooling, or otherwise) or until a non-standard unit, eliminating such interests, has been approved by the Commission.

Sec.		5	
NM- 03561		1530'	

Scale: 1"=1000'

CERTIFICATION

I hereby certify that the information contained herein is true and complete to the best of my knowledge and belief.

R. E. Fielder

Name
Robert E. Fielder

Position
District Engineer

Company
Southland Royalty Company

Date
January 23, 1981

I hereby certify that the well location shown on this plat was plotted from field notes of actual surveys made by me or under my supervision, and that the same is true and correct to the best of my knowledge and belief.

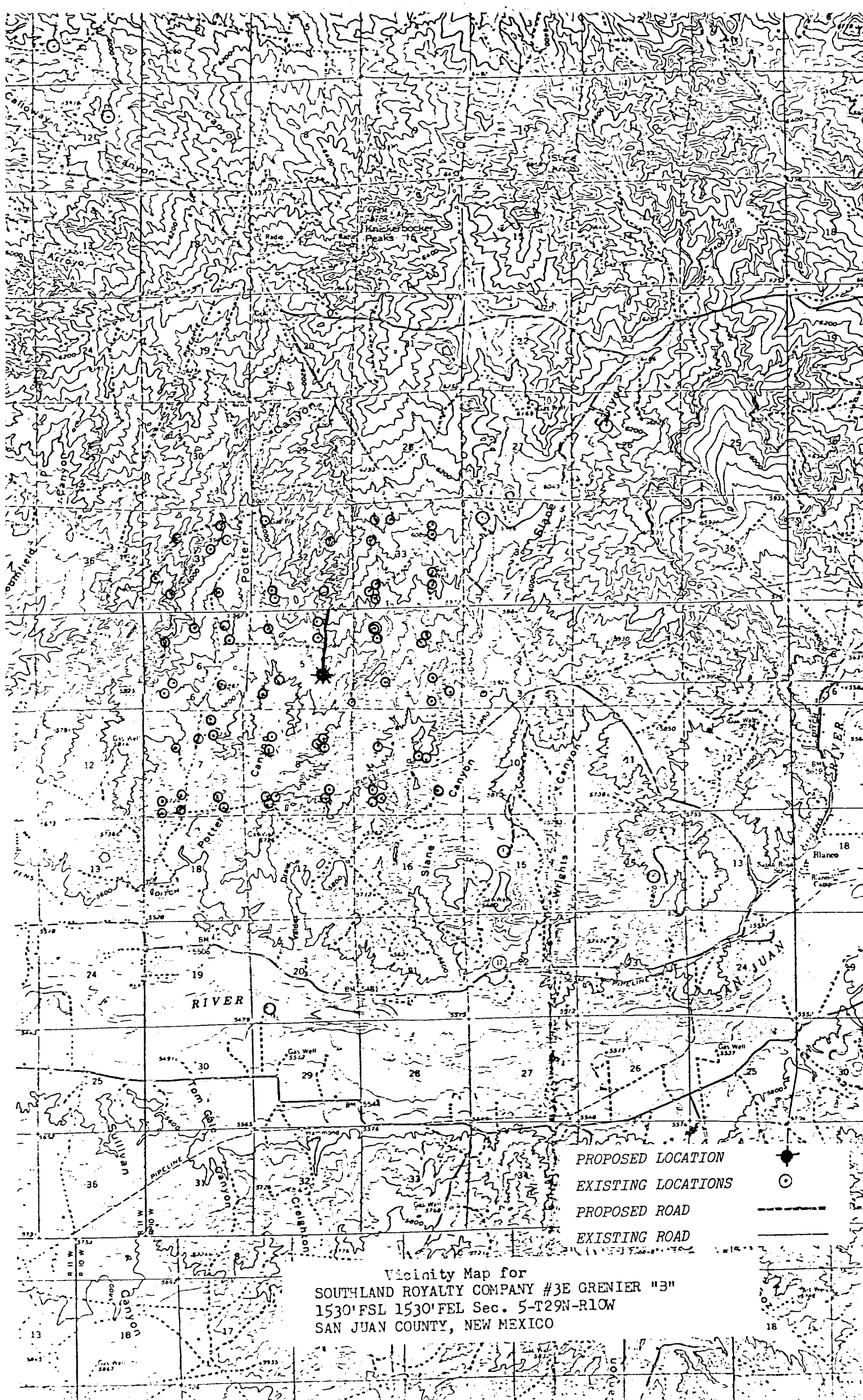
Date Surveyed
December 29, 1980

Registered Professional Engineer and Land Surveyor

Fred B. Kern Jr.
Fred B. Kern Jr.

Certificate No. 11500
3950

FORM 24-11



Vicinity Map for
SOUTHLAND ROYALTY COMPANY #3E GRENIER "B"
1530' FSL 1530' FEL Sec. 5-T29N-R10W
SAN JUAN COUNTY, NEW MEXICO