

UNITED STATES
DEPARTMENT OF THE INTERIOR
GEOLOGICAL SURVEY

APPLICATION FOR PERMIT TO DRILL, DEEPEN, OR PLUG BACK

1a. TYPE OF WORK

DRILL ☒DEEPEN ☐PLUG BACK ☐

b. TYPE OF WELL

OIL
WELL ☐GAS
WELL ☒

OTHER

SINGLE
ZONE ☒MULTIPLE
ZONE ☐

2. NAME OF OPERATOR

Tenneco Oil Company

3. ADDRESS OF OPERATOR

P.O. Box 3249, Englewood, Colorado 80155

4. LOCATION OF WELL (Report location clearly and in accordance with any State requirements.)

At surface

790 FSL, 790 FWL

At proposed prod. zone

same as above

14. DISTANCE IN MILES AND DIRECTION FROM NEAREST TOWN OR POST OFFICE*

Approximately 6 miles ESE of Blanco, N.M. U. S. GEOLOGICAL SURVEY
FARMINGTON, N. M.

15. DISTANCE FROM PROPOSED*

LOCATION TO NEAREST
PROPERTY OR LEASE LINE, FT.

(Also to nearest drlg. unit line, if any)

790'

18. DISTANCE FROM PROPOSED LOCATION*
TO NEAREST WELL, DRILLING, COMPLETED,
OR APPLIED FOR, ON THIS LEASE, FT.

19. PROPOSED DEPTH

±7033'

17. NO. OF ACRES ASSIGNED
TO THIS WELL

W/320 W/299.24

20. ROTARY OR CABLE TOOLS

Rotary

21. ELEVATIONS (Show whether DF, RT, GR, etc.)

5901' GR

22. APPROX. DATE WORK WILL START*

July 1981

23.

PROPOSED CASING AND CEMENTING PROGRAM

SIZE OF HOLE	SIZE OF CASING	WEIGHT PER FOOT	SETTING DEPTH	QUANTITY OF CEMENT
12 1/4"	9 5/8" new	36#	±250	Circulate to surface
8 3/4"	7" new	23#	±2980	Circulate to surface
6 1/4"	4 1/2" new	10.5#, 11.6#	±7033	Circulate to liner top

DRILLING
SPUD
CULVERTThis casing is to be cemented
applied production of gas only

See attached.

The gas is dedicated.



IN ABOVE SPACE DESCRIBE PROPOSED PROGRAM: If proposal is to deepen or plug back, give data on present productive zone and proposed new productive zone. If proposal is to drill or deepen directionally, give pertinent data on subsurface locations and measured and true vertical depths. Give blowout preventer program, if any.

24. SIGNED A. A. Mishler TITLE Sr. Production Analyst DATE January 27, 1981

(This space for Federal or State office use)

PERMIT NO. APPROVED

APPROVAL DATE

APPROVED BY

TITLE

DATE

CONDITIONS OF APPROVAL, IF ANY:

DISTRICT ENGINEER

*See Instructions On Reverse Side

Write
Name

OIL CONSERVATION DIVISION

STATE OF NEW MEXICO
ENERGY AND MINERALS DEPARTMENTP. O. BOX 2088
SANTA FE, NEW MEXICO 87501Form C-102
Revised 10-1-78

All distances must be from the outer boundaries of the Section.

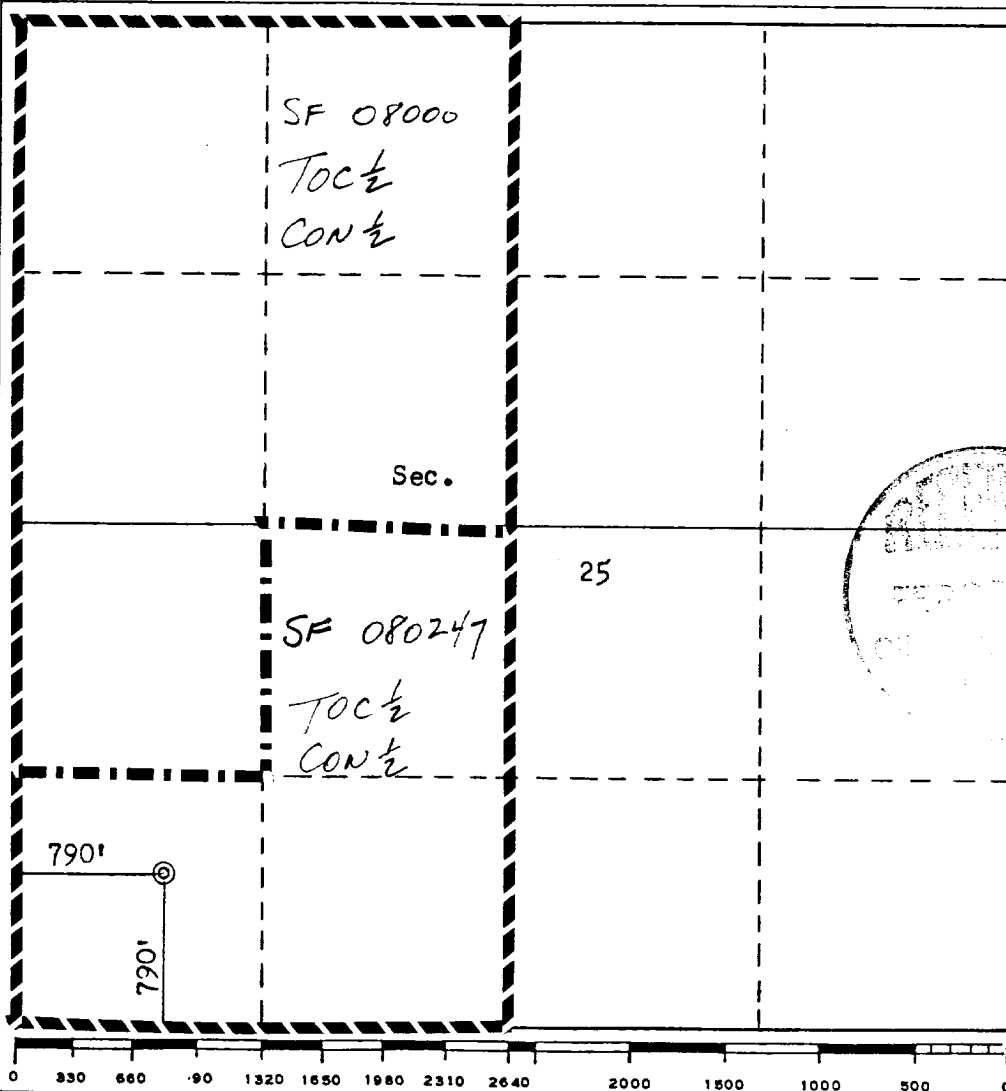
Operator TENNECO OIL COMPANY			Lease FLORANCE		Well No. 128
Unit Letter M	Section 25	Township 29N	Range 9W	County San Juan	
Actual Footage Location of Well: 790 feet from the South line and 790 feet from the West line					
Ground Level Elev. 5901	Producing Formation DAKOTA		Pool BASIN DAKOTA		Dedicated Acreage: 320-29924 Acres

1. Outline the acreage dedicated to the subject well by colored pencil or hatchure marks on the plat below.
2. If more than one lease is dedicated to the well, outline each and identify the ownership thereof (both as to working interest and royalty).
3. If more than one lease of different ownership is dedicated to the well, have the interests of all owners been consolidated by communitization, unitization, force-pooling, etc?

☐ Yes ☐ No If answer is "yes," type of consolidation _____

If answer is "no," list the owners and tract descriptions which have actually been consolidated. (Use reverse side of this form if necessary.) _____

No allowable will be assigned to the well until all interests have been consolidated (by communitization, unitization, forced-pooling, or otherwise) or until a non-standard unit, eliminating such interests, has been approved by the Commission.



CERTIFICATION

I hereby certify that the information contained herein is true and complete to the best of my knowledge and belief.

R. A. Mishler
Name

R. A. Mishler
Position

Sr. Production Analyst
Company

Tenneco Oil Company
Date

January 27, 1981

I hereby certify that the well location shown on this plat was plotted from field notes of actual surveys made by me or under my supervision, and that the same is true and correct to the best of my knowledge and belief.

Date Surveyed, *March 13, 1980*

Registered Professional Engineer
and/or Land Surveyor

Fred B. Kerr Jr.
Fred B. Kerr Jr.

Certificate No. *3950*

BLOOMFIELD QUADRANGLE
NEW MEXICO-SAN JUAN CO
15 MINUTE SERIES (TOPOGRAPHIC)

UNITED STATES
DEPARTMENT OF THE INTERIOR
GEOLOGICAL SURVEY

