

NO. OF COPIES RECEIVED	
DISTRIBUTION	
SANTA FE	
FILE	
U.S.G.S.	
LAND OFFICE	
OPERATOR	

NEW MEXICO OIL CONSERVATION COMMISSION

30-045-34933

Form C-101
Revised 1-1-65

5A. Indicate Type of Lease	
STATE <input type="checkbox"/>	FEE <input checked="" type="checkbox"/>
5. State Oil & Gas Lease No.	

APPLICATION FOR PERMIT TO DRILL, DEEPEN, OR PLUG BACK

1a. Type of Work		7. Unit Agreement Name	
b. Type of Well DRILL <input checked="" type="checkbox"/> DEEPEN <input type="checkbox"/> PLUG BACK <input type="checkbox"/> OIL WELL <input type="checkbox"/> GAS WELL <input checked="" type="checkbox"/> OTHER <input type="checkbox"/> SINGLE ZONE <input checked="" type="checkbox"/> MULTIPLE ZONE <input type="checkbox"/>		8. Farm or Lease Name Gerard "A"	
2. Name of Operator Southland Royalty Company		9. Well No. #1E	
3. Address of Operator P. O. Drawer 570, Farmington, NM 87401		10. Field and Pool, or Wildcat Basin Dakota	
4. Location of Well UNIT LETTER K LOCATED 1450 FEET FROM THE South LINE AND 1850 FEET FROM THE West LINE OF SEC. 21 TWP. 29N RGE. 13W NMPM		12. County San Juan	
19. Proposed Depth 5850'		19A. Formation Dakota	
20. Rotary or C.T. Rotary		21. Elevations (Show whether DF, RT, etc.) 5246' GR	
21A. Kind & Status Plug. Bond		21B. Drilling Contractor Four Corners Drilling	
22. Approx. Date Work will start March 15, 1981			

PROPOSED CASING AND CEMENT PROGRAM

SIZE OF HOLE	SIZE OF CASING	WEIGHT PER FOOT	SETTING DEPTH	SACKS OF CEMENT	EST. TOP
12 1/4"	8 5/8"	24. #	200'	165 cu. ft.	
7 7/8"	4 1/2"	10.5 #	5850'	327 cu. ft.	Stage One
				431 cu. ft.	Stage Two
				379 cu. ft.	Stage Three

Surface formation is Kirtland Shale.

Top of Fruitland sand is at 893'.

Top of Pictured Cliffs sand is at 1014'.

Fresh water mud will be used to drill from surface to total depth.

It is anticipated that an IES log will be run from surface casing to total depth, and a GR-Density log will be run from 700' to total depth.

No abnormal pressures or poisonous gases are anticipated in this well.

It is expected that this well will be drilled before July 31, 1981.

This depends on time required for approvals, rig availability and the weather.

Gas is dedicated.

APPROVAL VALID
FOR 90 DAYS UNLESS
DRILLING COMMENCED,

EXPIRES 9-6-81



IN ABOVE SPACE DESCRIBE PROPOSED PROGRAM. IF TO DEEPEN OR PLUG BACK, GIVE DATA ON PRESENT PRODUCTIVE ZONE AND PROPOSED NEW PRODUCTIVE ZONE. GIVE BLOWOUT PREVENTER PROGRAM, IF ANY.

I hereby certify that the information above is true and complete to the best of my knowledge and belief.

Signed B. E. Ziegler Title District Engineer Date 3-4-81

(This space for State Use)

APPROVED BY Frank J. Gray TITLE SUPERVISOR DISTRICT # 3 DATE MAR 6 1981

CONDITIONS OF APPROVAL, IF ANY:

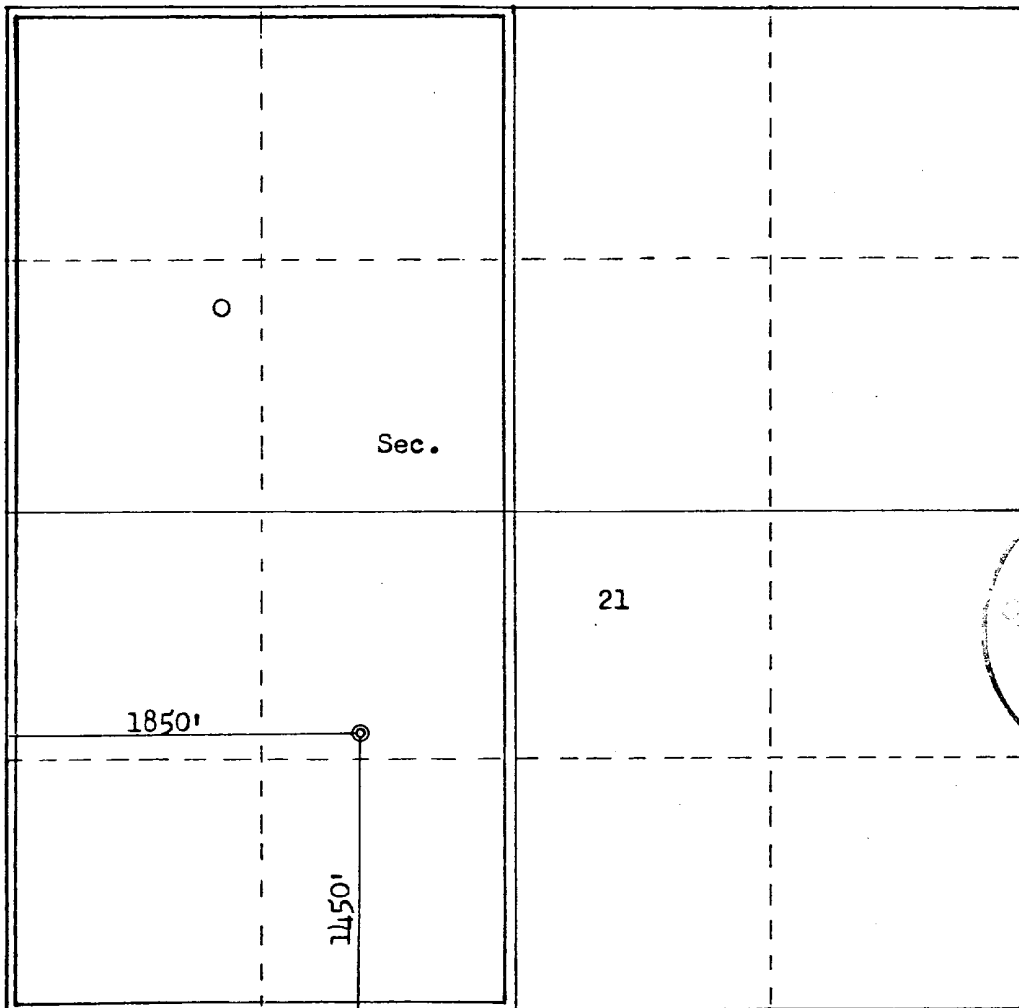
Gerard
A # 1
P. 7

OIL CONSERVATION DIVISION

STATE OF NEW MEXICO
ENERGY AND MINERALS DEPARTMENTP. O. BOX 2088
SANTA FE, NEW MEXICO 87501Form C-107
Revised 10-1-78

All distances must be from the outer boundaries of the Section.

Operator SOUTHLAND ROYALTY COMPANY			Lease GERARD "A"		Well No. 1E
Unit Letter K	Section 21	Township 29N	Range 13W	County San Juan	
Actual Footage Location of Well: 1450 feet from the South line and 1850 feet from the West line					
Ground Level Elev. 5246	Producing Formation Dakota		Pool Basin Dakota		Dedicated Acreage: 320 Acres
<p>1. Outline the acreage dedicated to the subject well by colored pencil or hachure marks on the plat below.</p> <p>2. If more than one lease is dedicated to the well, outline each and identify the ownership thereof (both as to working interest and royalty).</p> <p>3. If more than one lease of different ownership is dedicated to the well, have the interests of all owners been consolidated by communitization, unitization, force-pooling, etc?</p> <p><input type="checkbox"/> Yes <input type="checkbox"/> No If answer is "yes," type of consolidation _____</p> <p>If answer is "no," list the owners and tract descriptions which have actually been consolidated. (Use reverse side of this form if necessary.) _____</p> <p>No allowable will be assigned to the well until all interests have been consolidated (by communitization, unitization, forced-pooling, or otherwise) or until a non-standard unit, eliminating such interests, has been approved by the Commission.</p>					



Scale: 1"=1000'

CERTIFICATION

I hereby certify that the information contained herein is true and complete to the best of my knowledge and belief.

P. E. Fielder

Name

Robert E. Fielder

Position

District Engineer

Company

Southland Royalty Company

Date

March 4, 1981

I hereby certify that the well location shown on this plat was plotted from field notes of boring surveys made by me or under my supervision, and that the same is true and correct to the best of my knowledge and belief.

Date Surveyed **February 20, 1981**

Registered Professional Engineer and Land Surveyor

Fred B. Kern Jr.
Fred B. Kern Jr.

Certificate No. FERR.

3950

SOUTHLAND ROYALTY COMPANY - DRILLING SCHEDULE

Gerard "A" #1-E
1450 ' FSL & 1850 ' FWL
Section 21, T29N, R13W
San Juan County, New Mexico

Field: Basin Dakota Elevation: 5260' KB 5248' GL

Geology:

Formation Tops:	Fruitland	893'	Point Lookout	3511'
	Pictured Cliffs	1014'	Gallup	4718'
	Chacra	1990'	Graneros	5546'
	Cliff House	2597'	Dakota	4695'
			Total Depth	5850'

Logging Program: IES from Total Depth to Surface Casing; GR-Density
from Total Depth to 4500' and from 1400' to 700'.

Drilling:

Contractor:	Tool Pusher:
	SRC Answering Service: 325-1841
SRC Representative:	Dispatch Number: 325-7391

Mud Program: Fresh water mud from surface to Total Depth

Materials:

Casing Program:	<u>Hole Size</u>	<u>Depth</u>	<u>Casing Size</u>	<u>Wt. & Grade</u>
	12 1/4"	200'	8 5/8"	24.0#, K-55
	7 7/8"	5850'	4 1/2"	10.5#, K-55

Float Equipment:

8 5/8" Surface Casing: B & W guide shoe (FC01).

4 1/2" Production Casing: B & W guide shoe (FC01). B & W self-fill
flapper float collar (FP01) run one joint
off bottom. Five B & W standard centra-
lizers (AA02) - one on shoe joint, then
every other joint above shoe. Stage tools
at 3850' and 1300' with a cement basket
below and 5 centralizers above each tool.

Wellhead Equipment: 8 5/8" x 10", 2000# braden head
10", 2000# x 6", 2000# tubing head

Cement Program:

8 5/8" Surface Casing: 140 sacks (165 cu. ft.) of Class "B" with
1/4# gel flake per sack and 3# CaCl₂. WOC
12 hours. Test to 600# prior to drilling
out. (100% excess).

4 1/2" Production Casing: Stage One

180 sacks (268 cu. ft.) of Class "B" 50/50 Poz with 6% gel and 1/4# of gel flake per sack, followed by 50 sacks (59 cu. ft.) of Class "B" neat with 2% CaCl₂. (Volume is 25% excess to cover Gallup)

Stage Two

250 sacks (372 cu. ft.) of Class "B" 50/50 Poz with 6% gel and 1/4#/sk. gel flake, followed by 50 sacks (59 cu. ft.) of Class "B" neat with 2% CaCl₂. (Volume is 50% excess to cover Cliff House).

Stage Three

215 sacks (320 cu. ft.) of Class "B" 50/50 Poz with 6% gel and 1/4#/sk gel flake, followed by 50 sacks (59 cu. ft.) of Class "B" neat with 2% CaCl₂. (Volume is 50% excess to circulate to surface casing).

WOC and circulate 4 hours between stages.

L.O. Van Ryan
District Production Manager

JAC/dm



Southland Royalty Company

March 4, 1981

Oil Conservation Division
Mr. Frank Chavez
1000 Rio Brazos Road
Aztec, NM 87410

RE: Blowout Preventer Plan

Dear Mr. Chavez:

All drilling and completion rigs will be equipped with 6" or larger double gate hydraulic blowout preventers and a hydraulic operated closing unit with steel lines.

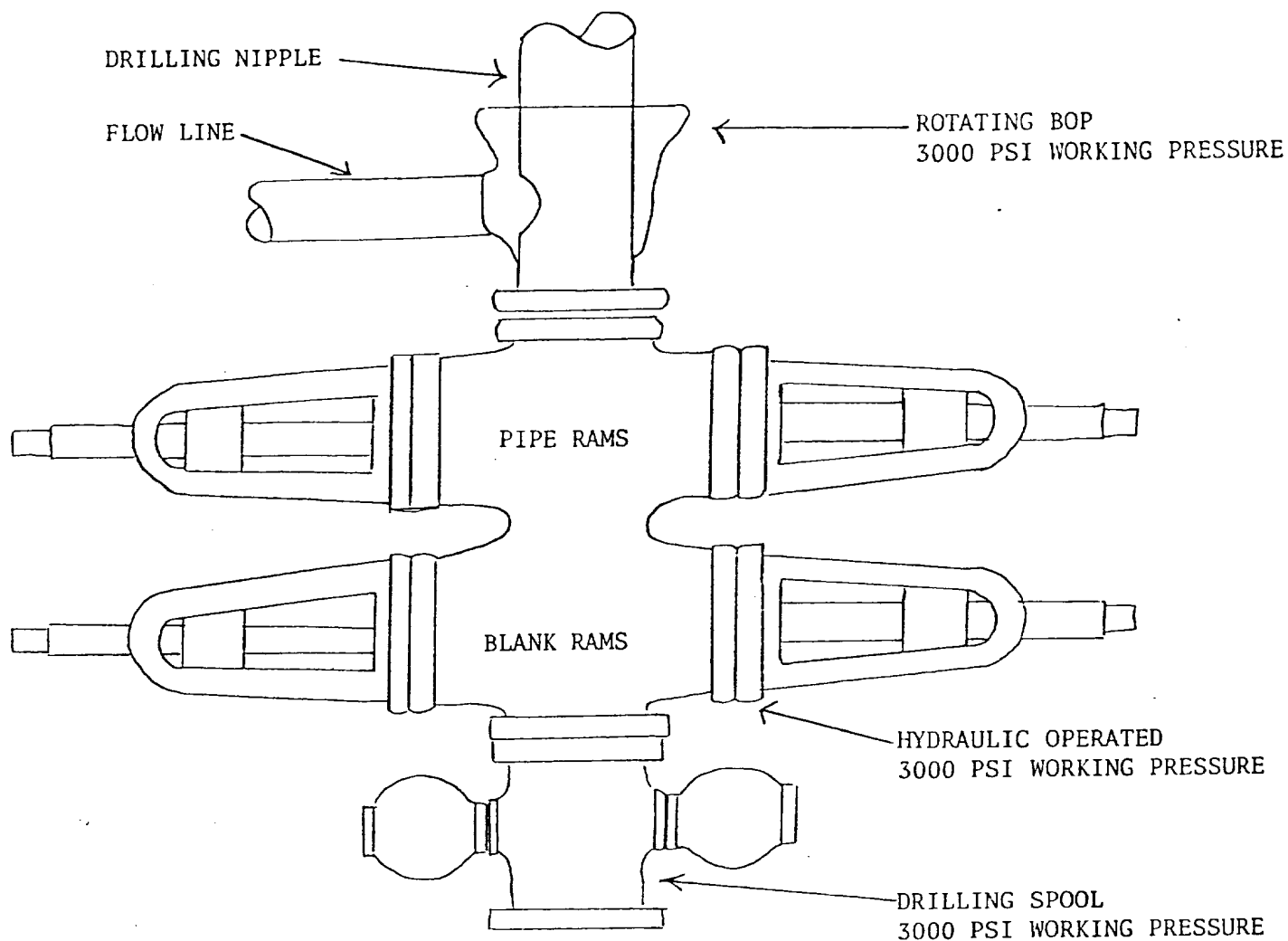
The preventer is 3000# working pressure and 6000# test pressure.

All crews will be thoroughly trained in the operation of this preventer. The preventer will be tested frequently enough to ensure proper operation.

Sincerely,

SOUTHLAND ROYALTY COMPANY

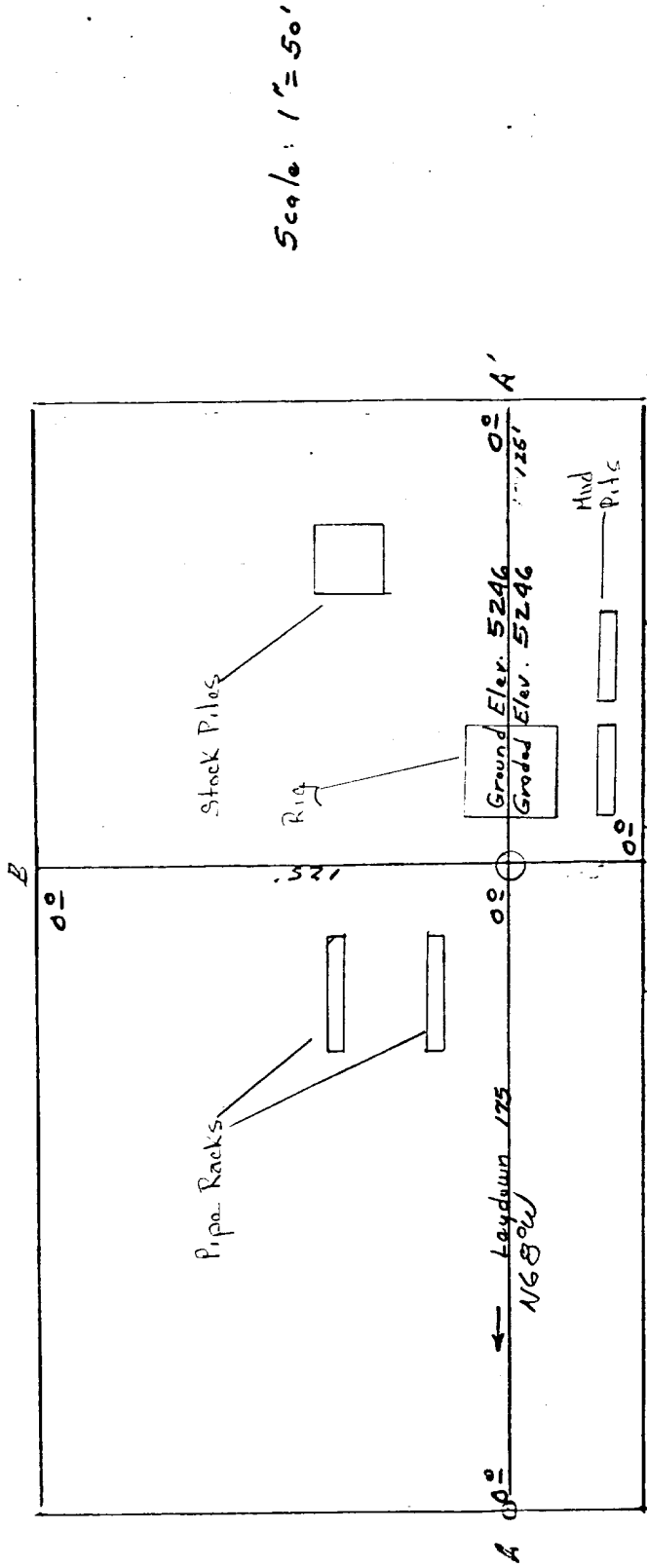
Robert E. Fielder
District Engineer



PREVENTERS AND SPOOLS ARE TO HAVE
THROUGH BORE OF 6" - 3000 PSI OR LARGER

Southland Royalty Company
GERARD "A" #1E
Sec. 21, T29N, R13W
San Juan County, NM

Profile Map for
 SOUTHLAND ROYALTY CO. #1E GERARD "A"
 1450' FSL 1850' FWL Sec. 21-T29N-R13W
 SAN JUAN COUNTY, NEW MEXICO



Vert. 1"=40' Horiz. 1"=100'

5250					
5240					

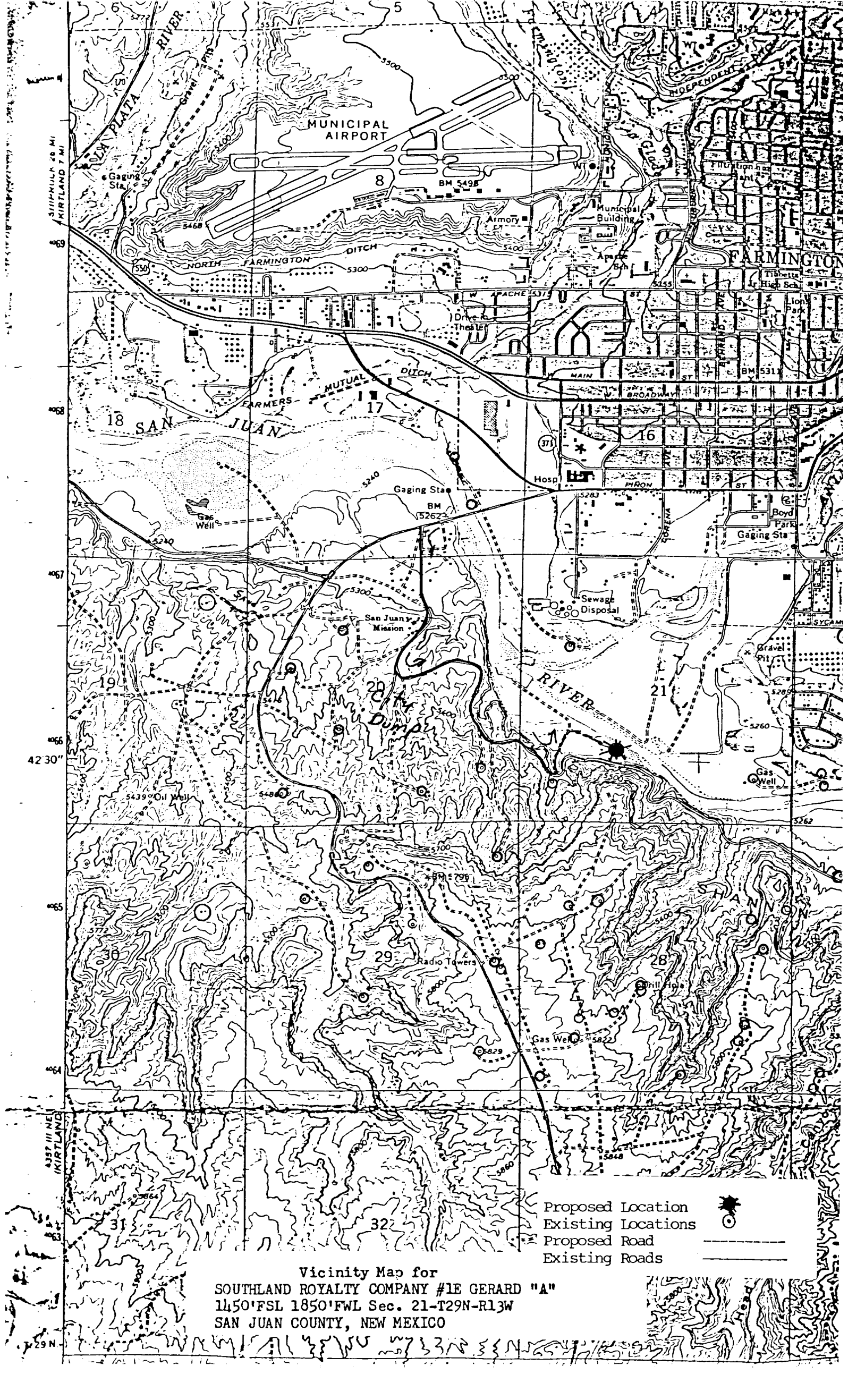
B-B'

5250					
5240					

Vert. 1"=40' Horiz. 1"=100'

B-B'

KERR LAND SURVEYING
 Date: _____



Vicinity Map for
SOUTHLAND ROYALTY COMPANY #1E GERARD "A"
1450'FSL 1850'FWL Sec. 21-T29N-R13W
SAN JUAN COUNTY, NEW MEXICO