



## OIL CONSERVATION DIVISION

STATE OF NEW MEXICO

P. O. BOX 2088

Form C-107  
Revised 10-1-78

ENERGY AND MINERALS DEPARTMENT

SANTA FE, NEW MEXICO 87501

All distances must be from the outer boundaries of the Section.

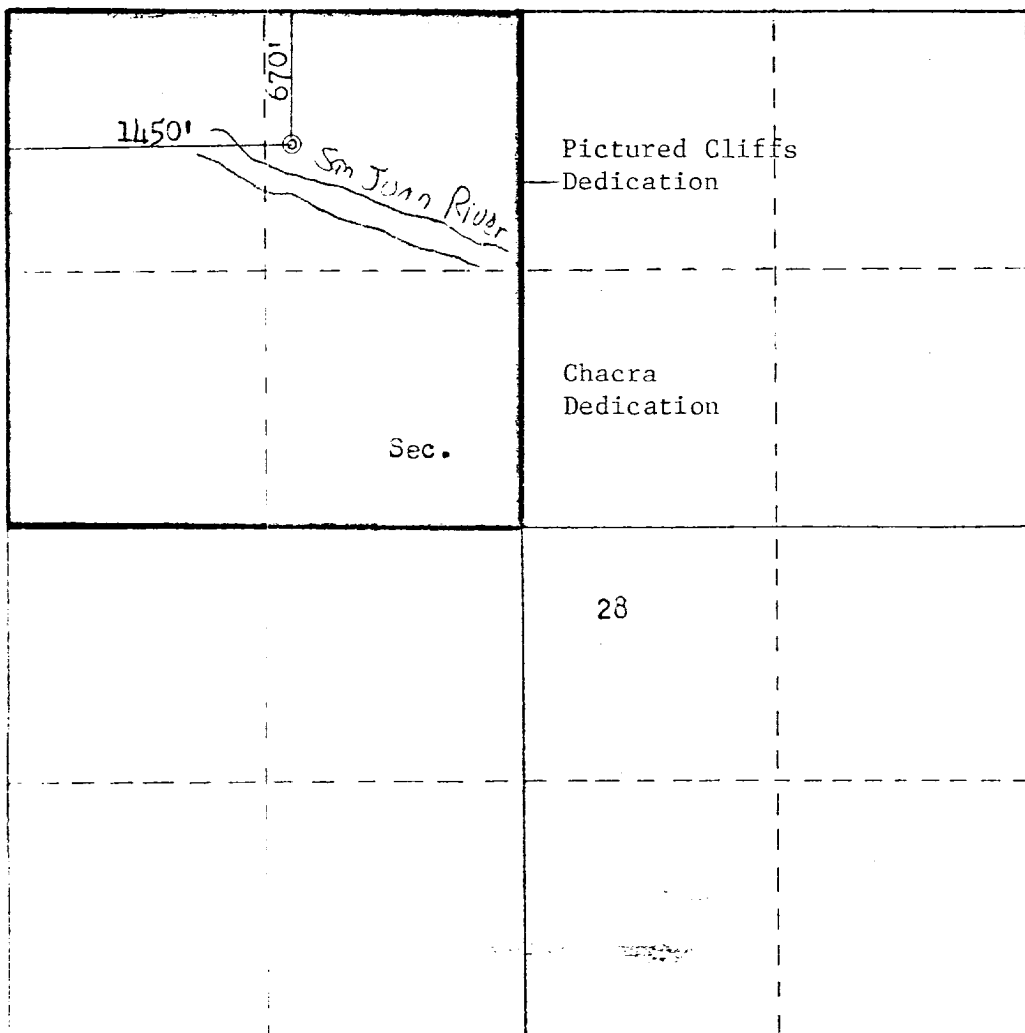
Operator <b>AMOCO PRODUCTION COMPANY</b>			Lease <b>ANDERSON GAS COM "A"</b>		Well No. <b>1</b>
Unit Letter <b>C</b>	Section <b>28</b>	Township <b>29N</b>	Range <b>10W</b>	County <b>San Juan</b>	
Actual Footage Location of Well: <b>670</b> feet from the <b>North</b> line and <b>1450</b> feet from the <b>West</b> line					
Ground Level Elev: <b>5474</b>	Producing Formation <b>Pictured Cliffs/Chacra</b>		Pool <b>Aztec Pictured Cliffs/ Bloomfield Chacra</b>		Dedicated Acreage: <b>160/160</b> Acres

1. Outline the acreage dedicated to the subject well by colored pencil or hachure marks on the plat below.
2. If more than one lease is dedicated to the well, outline each and identify the ownership thereof (both as to working interest and royalty).
3. If more than one lease of different ownership is dedicated to the well, have the interests of all owners been consolidated by communitization, unitization, force-pooling, etc?

☒ Yes    ☐ No    If answer is "yes," type of consolidation Communitization

If answer is "no," list the owners and tract descriptions which have actually been consolidated. (Use reverse side of this form if necessary.) \_\_\_\_\_

No allowable will be assigned to the well until all interests have been consolidated (by communitization, unitization, forced-pooling, or otherwise) or until a non-standard unit, eliminating such interests, has been approved by the Commission.



## CERTIFICATION

I hereby certify that the information contained herein is true and complete to the best of my knowledge and belief.

Name:

**W. L. PETERSON**

Position:

**DISTRICT ENGINEER**

Company:

**AMOCO PRODUCTION COMPANY**

Date:

**3/12/81**

I hereby certify that the well location shown on this plat was plotted from field notes of actual surveys made by me or under my supervision, and that the same is true and correct to the best of my knowledge and belief.

Date Surveyed:

**March 11, 1981**Registered Professional Engineer  
and Land Surveyor

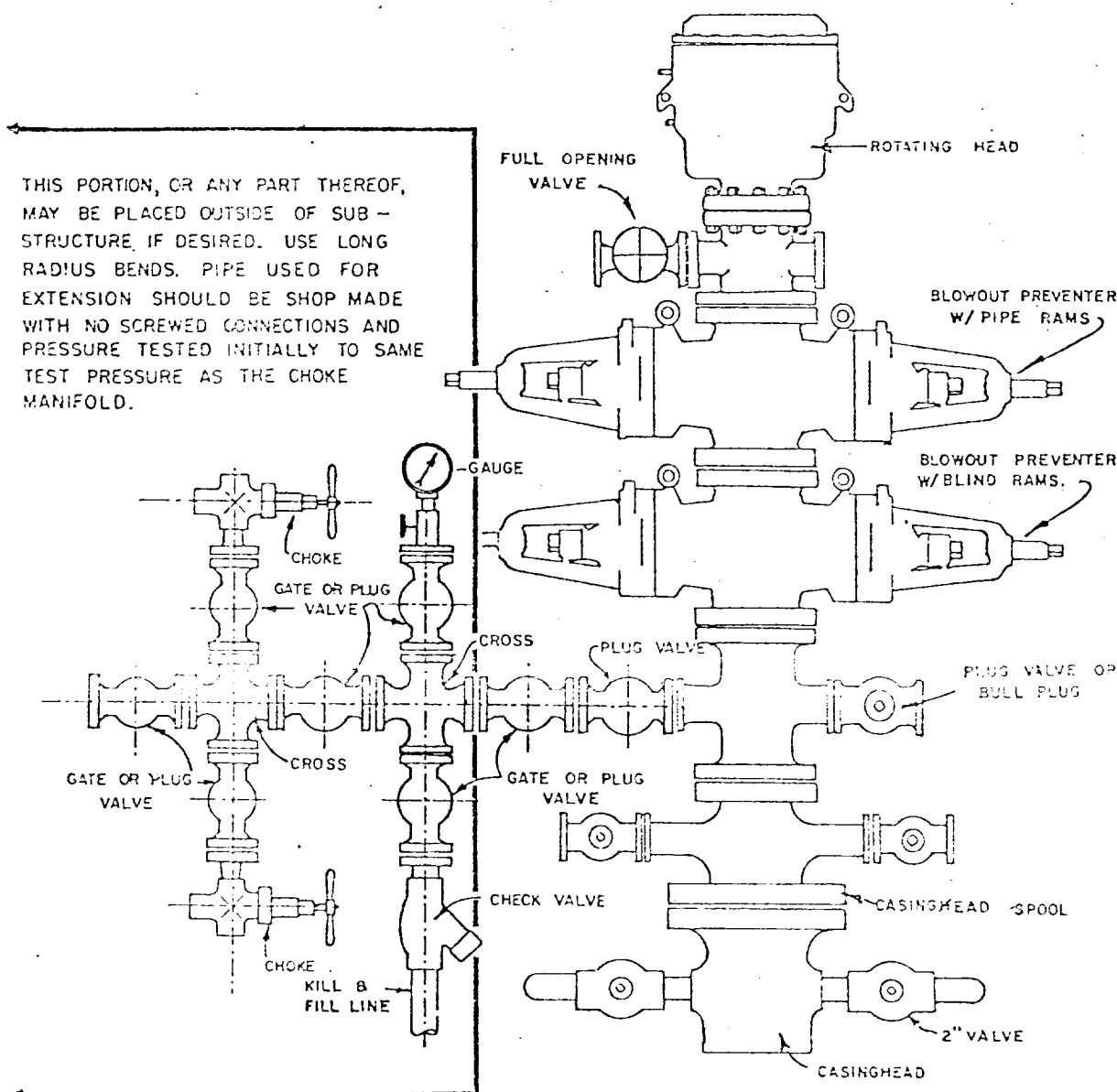
**Fred B. Kerr, Jr.**

Certificate No.:

**3950**

Scale: 1"=1000'

1. Blowout Preventers and Master Valve to be fluid operated, and all fittings must be in good condition.
2. Equipment through which bit must pass shall be as large as the inside diameter of the casing that is being drilled through.
3. Nipple above Blowout Preventer shall be same size or larger than BOP being drilled through.
4. All fittings to be flanged.
5. Omsco or comparable safety valve must be available on rig floor at all times with proper connection or sub. The I.D. of safety valve should be as great as I.D. of tool joints of drill pipe, or at least as great as I.D. of drill collars.



## BLOWOUT PREVENTER HOOKUP

API Series # 900

EXHIBIT D-4

OCTOBER 16, 1969

Operation of BOP by closing both pipe and blind rams will be tested each trip or, on long bit runs, pipe rams will be closed once each 24 hours.