

UNITED STATES  
DEPARTMENT OF THE INTERIOR  
GEOLOGICAL SURVEY

## APPLICATION FOR PERMIT TO DRILL, DEEPEN, OR PLUG BACK

## 1a. TYPE OF WORK

DRILL ☒DEEPEN ☐PLUG BACK ☐

## b. TYPE OF WELL

OIL  
WELL ☐GAS  
WELL ☒

OTHER

SINGLE  
ZONE ☐MULTIPLE  
ZONE ☐

## 2. NAME OF OPERATOR

Tenneco Oil Company

## 3. ADDRESS OF OPERATOR

P.O. Box 3249, Englewood, Colorado 80155

## 4. LOCATION OF WELL (Report location clearly and in accordance with any State requirements.)\*

At surface

2400 FSL, 1150 FWL

At proposed prod. zone

same as above

## 14. DISTANCE IN MILES AND DIRECTION FROM NEAREST TOWN OR POST OFFICE\*

Approximately 12 miles NE of Blanco, New Mexico

## 10. DISTANCE FROM PROPOSED\*

LOCATION TO NEAREST  
PROPERTY OR LEASE LINE, FT.  
(Also to nearest drig. unit line, if any)

1150'

18. DISTANCE FROM PROPOSED LOCATION\*  
TO NEAREST WELL, DRILLING, COMPLETED,  
OR APPLIED FOR, ON THIS LEASE, FT.

## 19. PROPOSED DEPTH

±7705

## 16. NO. OF ACRES IN LEASE

688.73

17. NO. OF ACRES ASSIGNED  
TO THIS WELL

W/320d W/320

## 20. ROTARY OR CABLE TOOLS

Rotary

## 21. ELEVATIONS (Show whether DF, RT, GR, etc.)

6242 GR

## 22. APPROX. DATE WORK WILL START\*

March 1981

## 23.

## PROPOSED CASING AND CEMENTING PROGRAM

SIZE OF HOLE	SIZE OF CASING	WEIGHT PER FOOT	SETTING DEPTH	QUANTITY OF CEMENT
12 1/4"	9 5/8" new	36#	±250	Circulate to surface
8 3/4"	7" new	23#	±6000	Circulate to surface
6 1/4"	4 1/2" new	10.5#, 11.6#	±7705	Circulate to liner top

See attached.

This action is subject to administrative  
appeal pursuant to 30 CFR 290.

The gas is dedicated.

DRILLING OPERATIONS AUTHORIZED ARE  
SUBJECT TO COMPLIANCE WITH ATTACHED  
"GENERAL REQUIREMENTS"

IN ABOVE SPACE DESCRIBE PROPOSED PROGRAM: If proposal is to deepen or plug back, give data on present productive zone and proposed new productive zone. If proposal is to drill or deepen directionally, give pertinent data on subsurface locations and measured and true vertical depths. Give blowout preventer program, if any.

## 24.

SIGNED

  
R.A. Mishler

TITLE

Sr. Production Analyst

DATE

December 1, 1980

(This space for Federal or State office use)

PERMIT NO.

APPROVAL DATE

APPROVED BY

TITLE

CONDITIONS OF APPROVAL, IF ANY:

\*See Instructions On Reverse Side

NM000

APPROVED  
DATE  
AS AMENDEDMAR 26 1981  
  
JAMES F. SIMS  
DISTRICT ENGINEER

30-045-24973

5. LEASE DESIGNATION AND SERIAL NO.

NMA  
012711

6. IF INDIAN, ALLOTTEE OR TRIBE NAME

7. UNIT AGREEMENT NAME

8. FARM OR LEASE NAME

Lawson

9. WELL NO.

1R

10. FIELD AND POOL, OR WILDCAT  
Blanco Basin  
Mesa Verde Dakota11. SEC., T., R., M., OR BLK.  
AND SURVEY OR AREA

Sec. 10, T30N, R8W

12. COUNTY OR PARISH

13. STATE

San Juan

N.M.

## OIL CONSERVATION DIVISION

P. O. BOX 2088

SANTA FE, NEW MEXICO 87501

Form C-107  
Revised 10-1-78

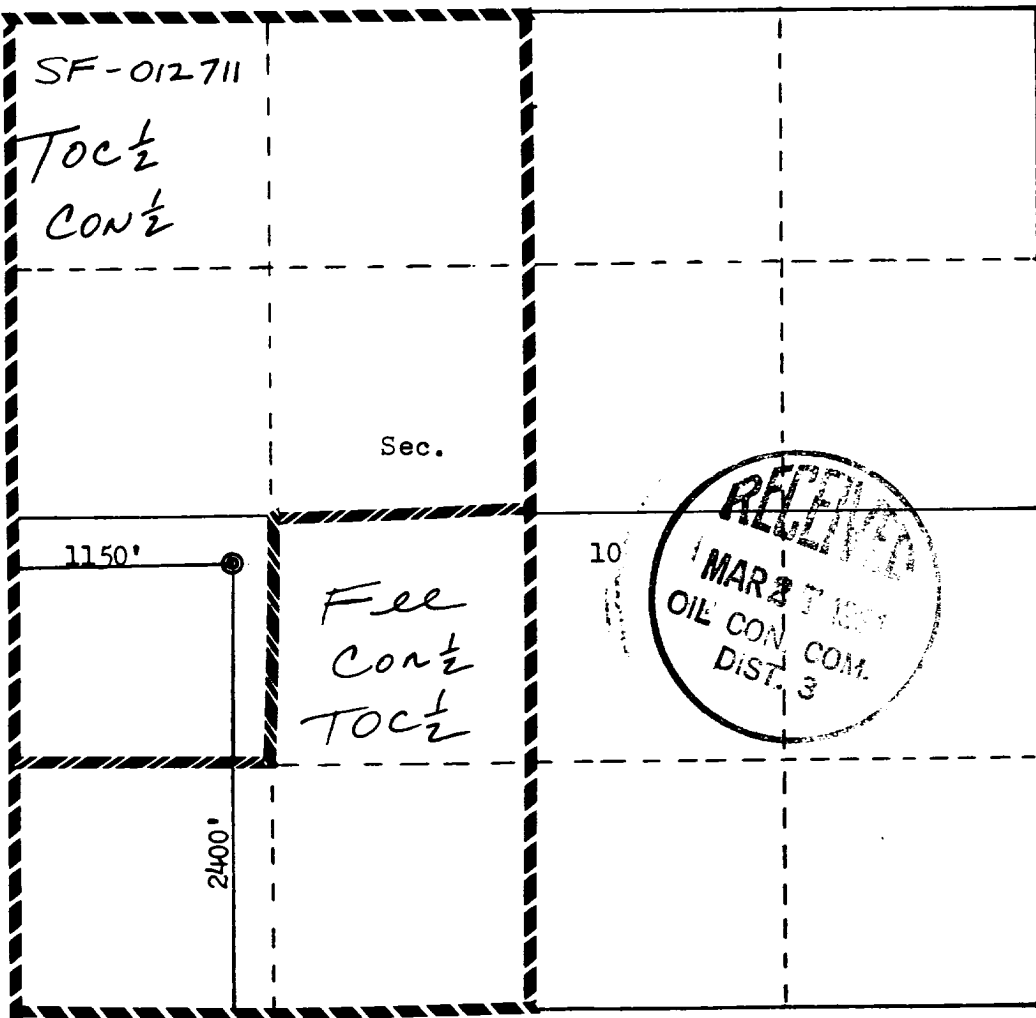
STATE OF NEW MEXICO

ENERGY AND MINERALS DEPARTMENT

All distances must be from the outer boundaries of the Section.

Operator <b>TENNECO OIL COMPANY</b>		Lease <b>LAWSON</b>		Well No. <b>1R</b>
Unit Letter <b>L</b>	Section <b>10</b>	Township <b>30N</b>	Range <b>R8W</b>	County <b>San Juan</b>
Actual Footage Location of Well: <b>2400</b> feet from the <b>South</b> line and <b>1150</b> feet from the <b>West</b> line				
Ground Level Elev. <b>6242</b>	Producing Formation <b>MESAVERDE / DAKOTA</b>	Pool <b>BLANCO MESAVERDE / BASIN DAKOTA</b>	Dedicated Acreage: <b>3.20</b> Acres	

- Outline the acreage dedicated to the subject well by colored pencil or machine marks on the plat below.
- If more than one lease is dedicated to the well, outline each and identify the ownership thereof (both as to working interest and royalty).
- If more than one lease of different ownership is dedicated to the well, have the interests of all owners been consolidated by communitization, unitization, force-pooling, etc?  
  
☐ Yes   ☐ No   If answer is "yes," type of consolidation \_\_\_\_\_  
  
 If answer is "no," list the owners and tract descriptions which have actually been consolidated. (Use reverse side of this form if necessary.) \_\_\_\_\_  
  
 No allowable will be assigned to the well until all interests have been consolidated (by communitization, unitization, forced-pooling, or otherwise) or until a non-standard unit, eliminating such interests, has been approved by the Commission.



## CERTIFICATION

I hereby certify that the information contained herein is true and complete to the best of my knowledge and belief.

Name

R.A. Mishler

Position

Sr. Production Analyst

Company

Tenneco Oil Company

Date

December 1, 1980

I hereby certify that the well location shown on this plat was plotted from field notes of actual surveys made by me or under my supervision, and that the same is true and correct to the best of my knowledge and belief.

Date Surveyed

October 24, 1980

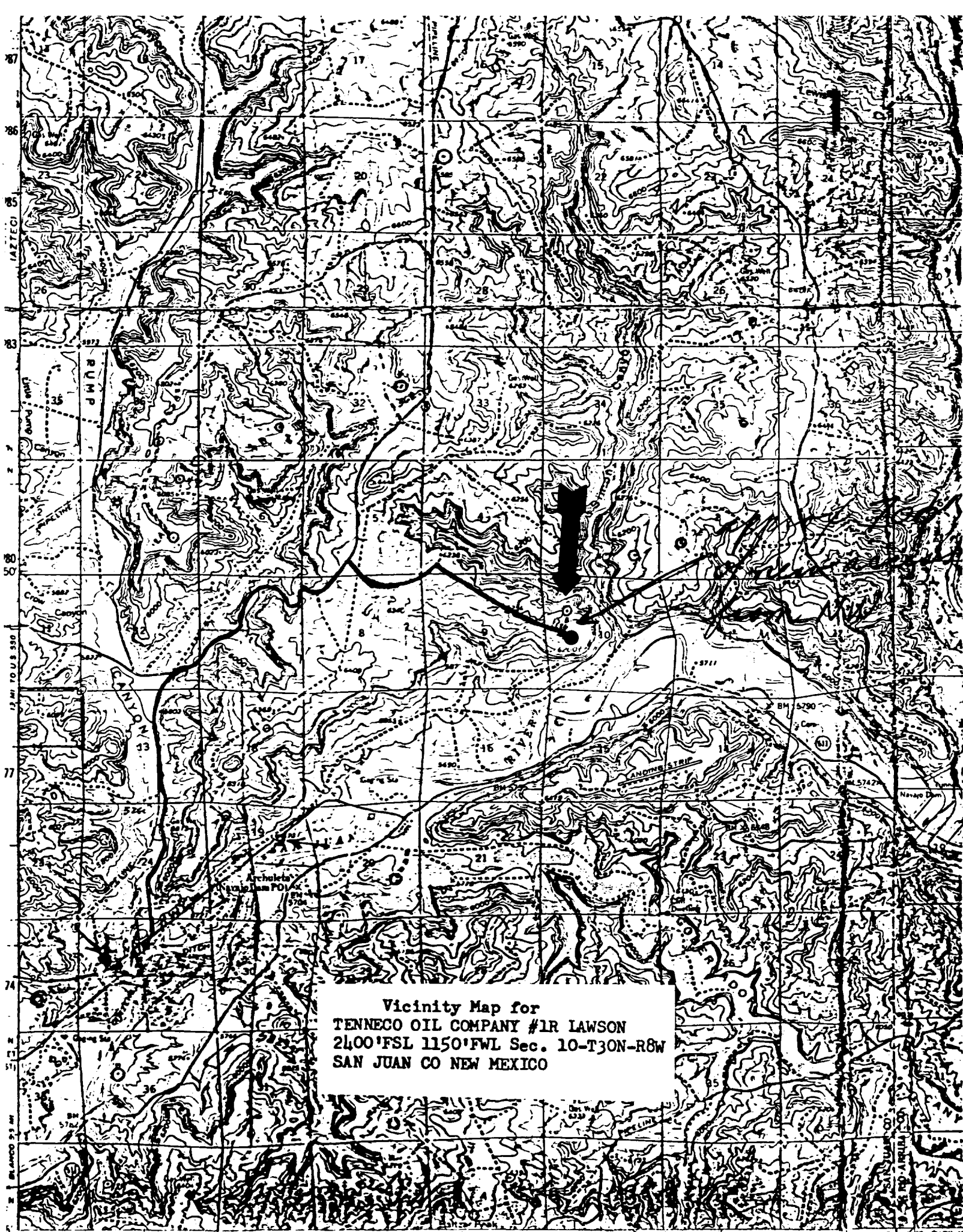
 Registered Professional Engineer  
and  
Surveyor

Fred B. Kerr Jr.

Certificate No.

3950 F. B. KERR JR.

FORM 24-11



Vicinity Map for  
TENNECO OIL COMPANY #1R LAWSON  
2400' FSL 1150' FWL Sec. 10-T30N-R8W  
SAN JUAN CO NEW MEXICO