

UNITED STATES
DEPARTMENT OF THE INTERIOR
GEOLOGICAL SURVEY

SUNDRY NOTICES AND REPORTS ON WELLS

(Do not use this form for proposals to drill or to deepen or plug back to a different reservoir. Use Form 9-331-C for such proposals.)

1. oil ☐ gas ☒ other ☐

2. NAME OF OPERATOR
Tenneco Oil Company

3. ADDRESS OF OPERATOR
Box 3249, Englewood, CO 80155

4. LOCATION OF WELL (REPORT LOCATION CLEARLY. See space 17 below.)
AT SURFACE: 2400' FSL & 1150' FWL "L"
AT TOP PROD. INTERVAL:
AT TOTAL DEPTH:

16. CHECK APPROPRIATE BOX TO INDICATE NATURE OF NOTICE, REPORT, OR OTHER DATA

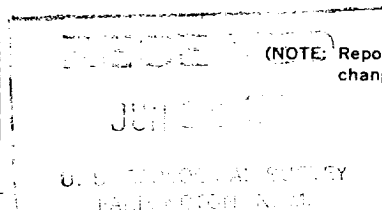
REQUEST FOR APPROVAL TO:

SUBSEQUENT REPORT OF:

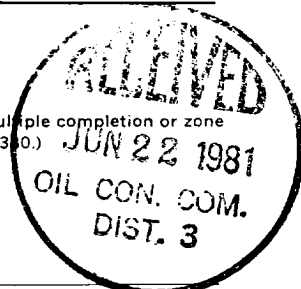
TEST WATER SHUT-OFF ☐
FRACTURE TREAT ☐
SHOOT OR ACIDIZE ☐
REPAIR WELL ☐
PULL OR ALTER CASING ☐
MULTIPLE COMPLETE ☐
CHANGE ZONES ☐
ABANDON* ☐

(other) Change of plans-csg design

☐
☐
☐
☐
☐
☐
☐
☐
☐
☐



(NOTE: Report results of multiple completion or zone change on Form 9-331.0.)



17. DESCRIBE PROPOSED OR COMPLETED OPERATIONS (Clearly state all pertinent details, and give pertinent dates, including estimated date of starting any proposed work. If well is directionally drilled, give subsurface locations and measured and true vertical depths for all markers and zones pertinent to this work.)*

6/9/81. Due to anticipated problems downhole, Tenneco proposes to change the csg. detail indicated on APD as follows:

Hole Size	Csg Size/Weight	Depth	Cement
17-1/2"	13-3/8" H-40 48#	± 300'	Circ to surface
12-1/4"	9-5/8" K-55 40#	± 3800'	Circ to surface
8-3/4"	7" K-55 23#	± 5900'	Circ to surface
6-1/4"	4-1/2" K-55 10.5#, 11/6#	± 7705'	Circ to liner top

Estimated spud date: December 1981

Subsurface Safety Valve: Manu. and Type _____ Set @ _____ Ft.

18. I hereby certify that the foregoing is true and correct

SIGNED Carley TITLE Asst. Div. Adm. Mgr. DATE 6-9-81

(This space for Federal or State office use)

APPROVED BY _____
CONDITIONS OF APPROVAL, IF ANY:

TITLE _____

DATE _____

NMOCC

*See Instructions on Reverse Side

APPROVED
AS AMENDED

JUN 17 1981
JAMES F. SIMS
DISTRICT ENGINEER