

UNITED STATES
DEPARTMENT OF THE INTERIOR
GEOLOGICAL SURVEY

APPLICATION FOR PERMIT TO DRILL, DEEPEN, OR PLUG BACK

1a. TYPE OF WORK

DRILL ☒DEEPEN ☐PLUG BACK ☐

b. TYPE OF WELL

OIL
WELL ☐GAS
WELL ☒

OTHER

SINGLE
ZONE ☒MULTIPLE
ZONE ☐

2. NAME OF OPERATOR

Blackwood & Nichols Co., Ltd.

3. ADDRESS OF OPERATOR

P. O. Box 1237, Durango, Colorado 81301

4. LOCATION OF WELL (Report location clearly and in accordance with any State requirements.)*

At surface 1160' F/NL - 60' F/WL

At proposed prod. zone

1190' F/NL - 790' F/WL

14. DISTANCE IN MILES AND DIRECTION FROM NEAREST TOWN OR POST OFFICE*

Fifteen Miles

15. DISTANCE FROM PROPOSED*

LOCATION TO NEAREST
PROPERTY OR LEASE LINE, FT.
(Also to nearest drlg. unit line, if any)18. DISTANCE FROM PROPOSED LOCATION*
TO NEAREST WELL, DRILLING, COMPLETED,
OR APPLIED FOR, ON THIS LEASE, FT.

21. ELEVATIONS (Show whether DF, RT, GR, etc.)

6136' GL

16. NO. OF ACRES IN LEASE

1779.91

19. PROPOSED DEPTH

5955

17. NO. OF ACRES ASSIGNED
TO THIS WELL

319.99

20. ROTARY OR CABLE TOOLS

Rotary

22. APPROX. DATE WORK WILL START*

April 1, 1981

23. PROPOSED GRISING AND CEMENTING PROGRAM

SIZE OF HOLE	SIZE OF CASING	WEIGHT PER FOOT	SETTING DEPTH	QUANTITY OF CEMENT
12 1/4"	9 5/8"	36.00# H-40	350'	Circulate
8 3/4"	7"	23.00# K-55	3650'	Two stage circulate to surface
6 1/4"	4 1/2"	10.50# K-55	5955'	Connect to 7"

NTL-6

(3) San Jose

(6) Ojo Alamo 1985'; Kirtland 2115'; Lewis 3490'; Cliffhouse 4890'; Mancos 5720'.

(7) Fruitland 3000'; Pictured Cliffs 3240'; Massive Cliffhouse 5180'; Menefee 5220'; Point Lookout 5505'.

(9) 9 5/8" surface; 300 sacks Class B cement with 2% CaCl₂; circulate to surface. 7" intermediate; 200 sacks Lite cement with 1/4# flocele per sack followed with 100 sacks Class B with 2% CaCl₂ and 1/4# flocele per sack. Second stage; 200 sacks Lite with 1/4# flocele per sack; to circulate to surface. 4 1/2" liner; 300 sacks 50-50 Pozmix with 2% gel, 0.6% FLA, 1/4# flocele per sack and 6 1/4# Gilsonite per sack to circulate to top of liner.

(10) A 3000 PSI WP; Series 10" - 900 - adapted to Series 10" - 600 and 6" - 600 hydraulic blowout preventer equipped with blind and necessary pipe rams will be used with

(Over) adequate kill and bleed off lines. Blowout preventer will be pressure tested after

IN ABOVE SPACE DESCRIBE PROPOSED PROGRAM: If proposal is to deepen or plug back, give data on present productive zone and proposed new productive zone. If proposal is to drill or deepen directionally, give pertinent data on subsurface locations and measured and true vertical depths. Give blowout preventer program, if any.

24. DeLasso Loos DeLasso Loos TITLE District Manager DATE January 2, 1981

(This space for Federal or State office use)

PERMIT NO. _____

APPROVAL DATE _____

APPROVED BY _____

TITLE _____

CONDITIONS OF APPROVAL, IF ANY:

NMOC

*See Instructions on Reverse Side

APPROVED
AS AMENDED

DATE

APR 15 1981

JAMES F. SIMS
DISTRICT ENGINEER

**NEW MEXICO OIL CONSERVATION COMMISSION
WELL LOCATION AND ACREAGE DEDICATION PLAT**

Form C-102
Supersedes C-128
Effective 1-1-65

All distances must be from the outer boundaries of the Section.

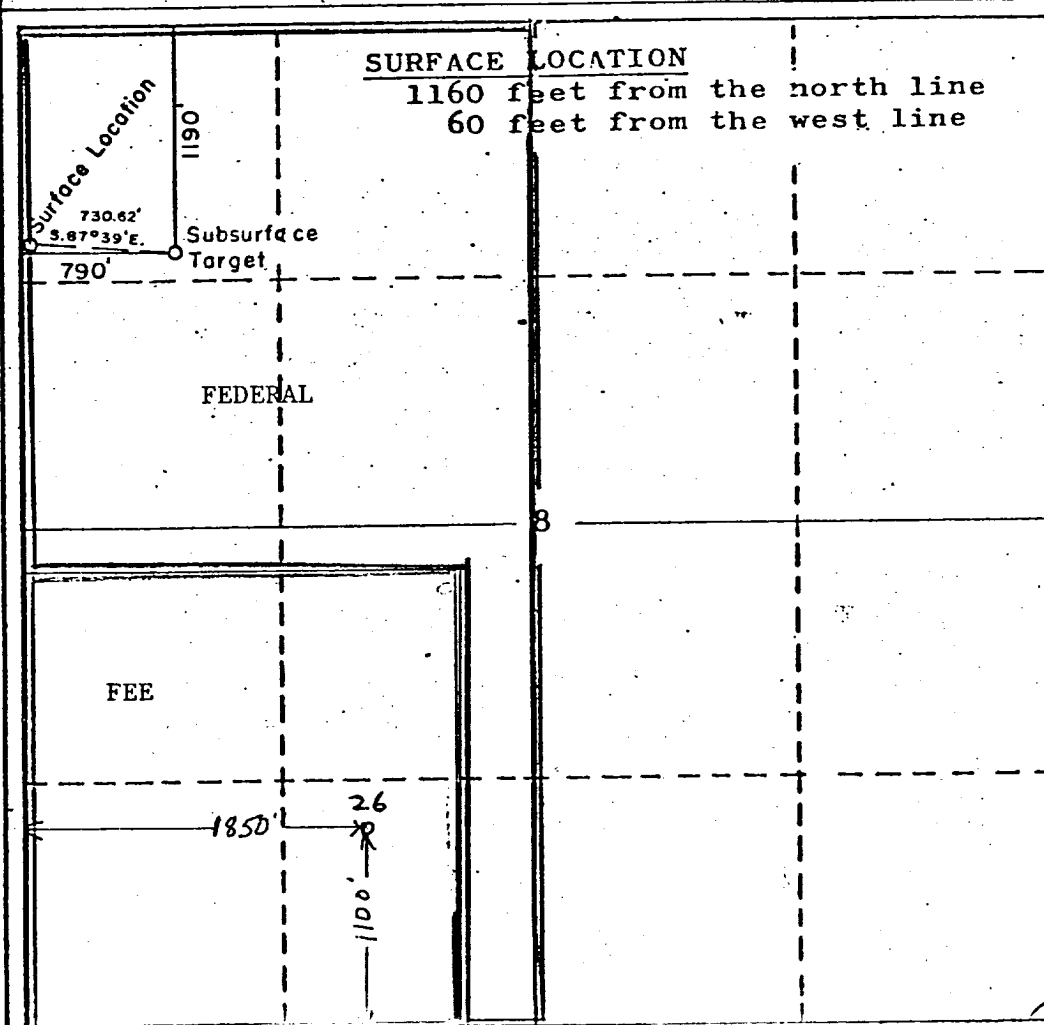
Operator BLACKWOOD & NICHOLS			Lease NORTHEAST BLANCO UNIT		Well No. 26A
Unit Letter D	Section 8	Township 30 N.	Range 7W., N.M.P.M.	County SAN JUAN	
Actual Footage Location of Wells <div style="display: flex; justify-content: space-between;"> 1190 feet from the north line and 790 feet from the west line </div>					
Ground Level Elev. Surface Loc. 6136 U.G.	Producing Formation Mesaverde	Pool Blanco-Mesaverde		Dedicated Acreage: 319.99 Acres	

1. Outline the acreage dedicated to the subject well by colored pencil or hatchure marks on the plat below.
2. If more than one lease is dedicated to the well, outline each and identify the ownership thereof (both as to working interest and royalty).
3. If more than one lease of different ownership is dedicated to the well, have the interests of all owners been consolidated by communitization, unitization, force-pooling, etc?

☒ Yes ☐ No If answer is "yes," type of consolidation Unitization

If answer is "no," list the owners and tract descriptions which have actually been consolidated. (Use reverse side of this form if necessary.) _____

No allowable will be assigned to the well until all interests have been consolidated (by communitization, unitization, forced-pooling, or otherwise) or until a non-standard unit, eliminating such interests, has been approved by the Commission.



CERTIFICATION

I hereby certify that the information contained herein is true and complete to the best of my knowledge and belief.

Name

DeLasso Loos

Position

District Manager

Company

Blackwood & Nichols Co., Ltd.

Date

October 20, 1980

I hereby certify that the well location shown on this plat was plotted from field notes of actual surveys made by me or under my supervision, and that the same is true and correct to the best of my knowledge and belief.

Date Surveyed

October 14, 1980

Registered Professional Engineer and/or Land Surveyor

John A. Krueger, L.S.

Certification No.

10

0 330 660 990 1320 1650 1980 2310 2640 2970 3300 3630 3960 4290 4620 4950 5280 5610 5940 6270 6600

