

NO. OF COPIES RECEIVED	
DISTRIBUTION	
SANTA FE	
FILE	
U.S.G.S.	
LAND OFFICE	
OPERATOR	

NEW MEXICO OIL CONSERVATION COMMISSION

Form C-101
Revised 1-4-65

30-045-25029

5A. Indicate Type of Lease
STATE ☐ FEE ☒

5. State Oil & Gas Lease No.

7. Unit Agreement Name

8. Farm or Lease Name

Kirtland

9. Well No.

#9

10. Field and Pool, or Wildcat

Cha-Cha Gallup

12. County

San Juan

19. Proposed Depth

4700

19A. Formation

Gallup

20. Rotary or C.T.

CT Surface

Rotary to TD

21. Elevations (Show whether DF, RT, etc.)

5176 GR

21A. Kind & Status Plug. Bond

Statewide

21B. Drilling Contractor

Kenai, Maness

22. Approx. Date Work will start

May 15, 1981

PROPOSED CASING AND CEMENT PROGRAM

SIZE OF HOLE	SIZE OF CASING	WEIGHT PER FOOT	SETTING DEPTH	SACKS OF CEMENT	EST. TOP
12 1/2	8 5/8	23#	330'	275 sx	circ
7 7/8	4 1/2	9.5#	4700'	1000 sx	circ

I. Drill to 330 ft with cable tool and set 8 jts 8 5/8" 23# casing with 275 sx cement. Cement should circulate.

IV. Log with Schlumberger Laterlog-SFL and FDC-CNL.

II. Move in rotary and drill to approx 4700'.

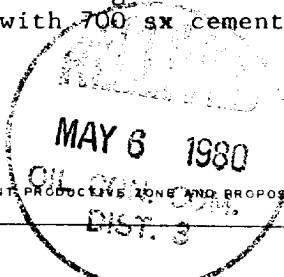
V. Run casing to TD and cement in two stages.

III. Mud logger will be on well during rotary drilling.

VI. Set DV tool at approximately 3300', cement bottom stage 300 sx and cement top stage with 700 sx cement.

APPROVAL VALID
FOR 60 DAYS UNLESS
DRILLING COMMENCED,

EXPIRES 11-6-81



IN ABOVE SPACE DESCRIBE PROPOSED PROGRAM; IF PROPOSAL IS TO DEEPEN OR PLUG BACK, GIVE DATA ON PRESENT PRODUCTIVE ZONE AND PROPOSED NEW PRODUCTIVE ZONE. GIVE BLOWOUT PREVENTER PROGRAM, IF ANY.

I hereby certify that the information above is true and complete to the best of my knowledge and belief.

Signed Donny G. Foote Title Geologist Date May 4, 1981

(This space for State Use)

APPROVED BY Frank J. Chung TITLE SUPERVISOR DISTRICT # 3

DATE MAY 6 1981

CONDITIONS OF APPROVAL, IF ANY:

OIL CONSERVATION DIVISION

STATE OF NEW MEXICO

P. O. BOX 2088

Form C-107

Revised 10-1-78

ENERGY AND MINERALS DEPARTMENT

SANTA FE, NEW MEXICO 87501

All distances must be from the outer boundaries of the Section.

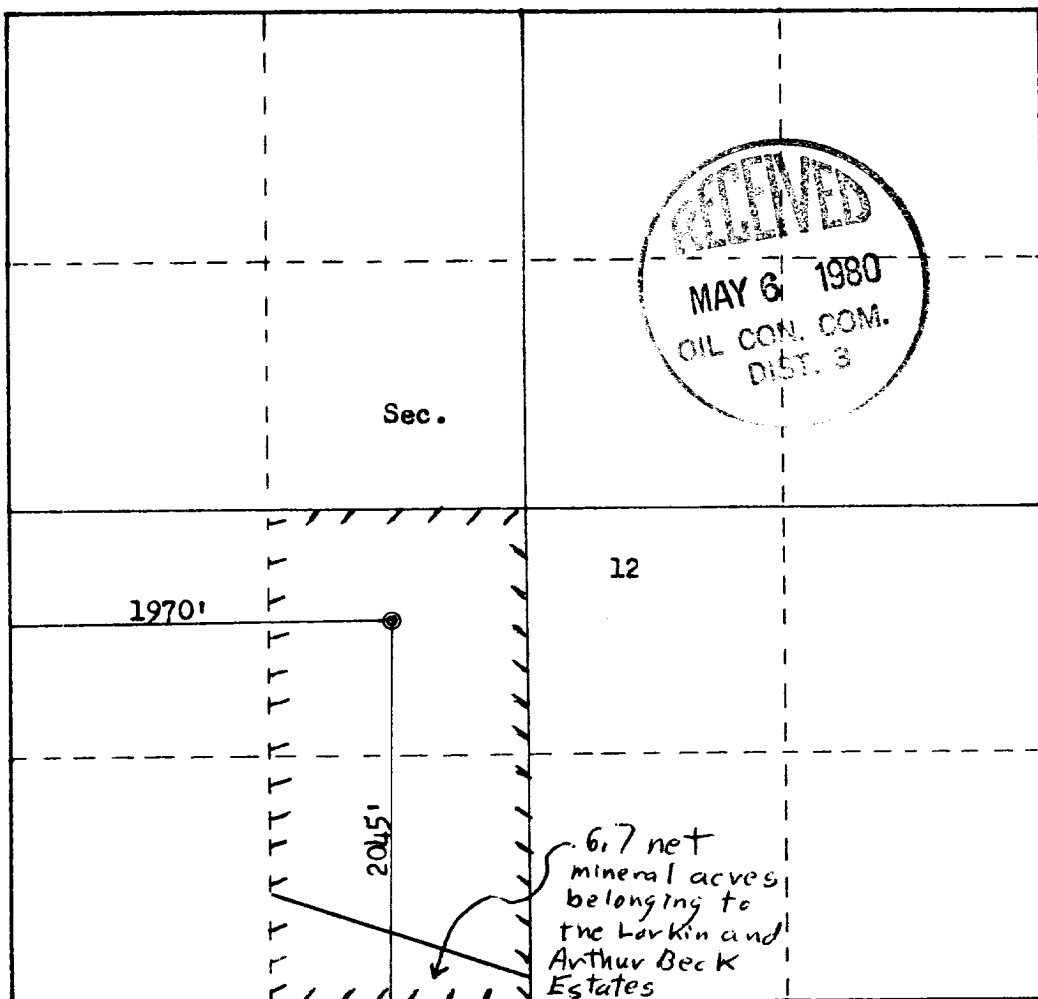
Operator CARIBOU-FOUR CORNERS, INCORPORATED			Lease KIRTLAND		Well No. 9
Unit Letter K	Section 12	Township 29N	Range 15W	County San Juan	
Actual Footage Location of Well: 2045 feet from the South line and 1970 feet from the West line					
Ground Level Elev. 5176	Producing Formation Gallup		Pool Cha-Cha Gallup		Dedicated Acreage: 80 Acres

1. Outline the acreage dedicated to the subject well by colored pencil or hachure marks on the plat below.
2. If more than one lease is dedicated to the well, outline each and identify the ownership thereof (both as to working interest and royalty).
3. If more than one lease of different ownership is dedicated to the well, have the interests of all owners been consolidated by communitization, unitization, force-pooling, etc?

☒ Yes ☐ No If answer is "yes," type of consolidation force pooling now before the state
Case #7232

If answer is "no," list the owners and tract descriptions which have actually been consolidated. (Use reverse side of this form if necessary.) _____

No allowable will be assigned to the well until all interests have been consolidated (by communitization, unitization, forced-pooling, or otherwise) or until a non-standard unit, eliminating such interests, has been approved by the Commission.



Scale: 1"=1000'

CERTIFICATION

I hereby certify that the information contained herein is true and complete to the best of my knowledge and belief.

Dennis G. Focht
Name

Geologist

Position

Caribou Four Corners, Inc.

Company

May 4, 1981

Date

I hereby certify that the well location shown on this plat was plotted from field notes of actual surveys made by me or under my supervision, and that the same is true and correct to the best of my knowledge and belief.

Date Surveyed

February 17, 1981

Registered Professional Engineer and Land Surveyor

Fred D. Kerr Jr.
Fred D. Kerr Jr.

Certificate No.

3950